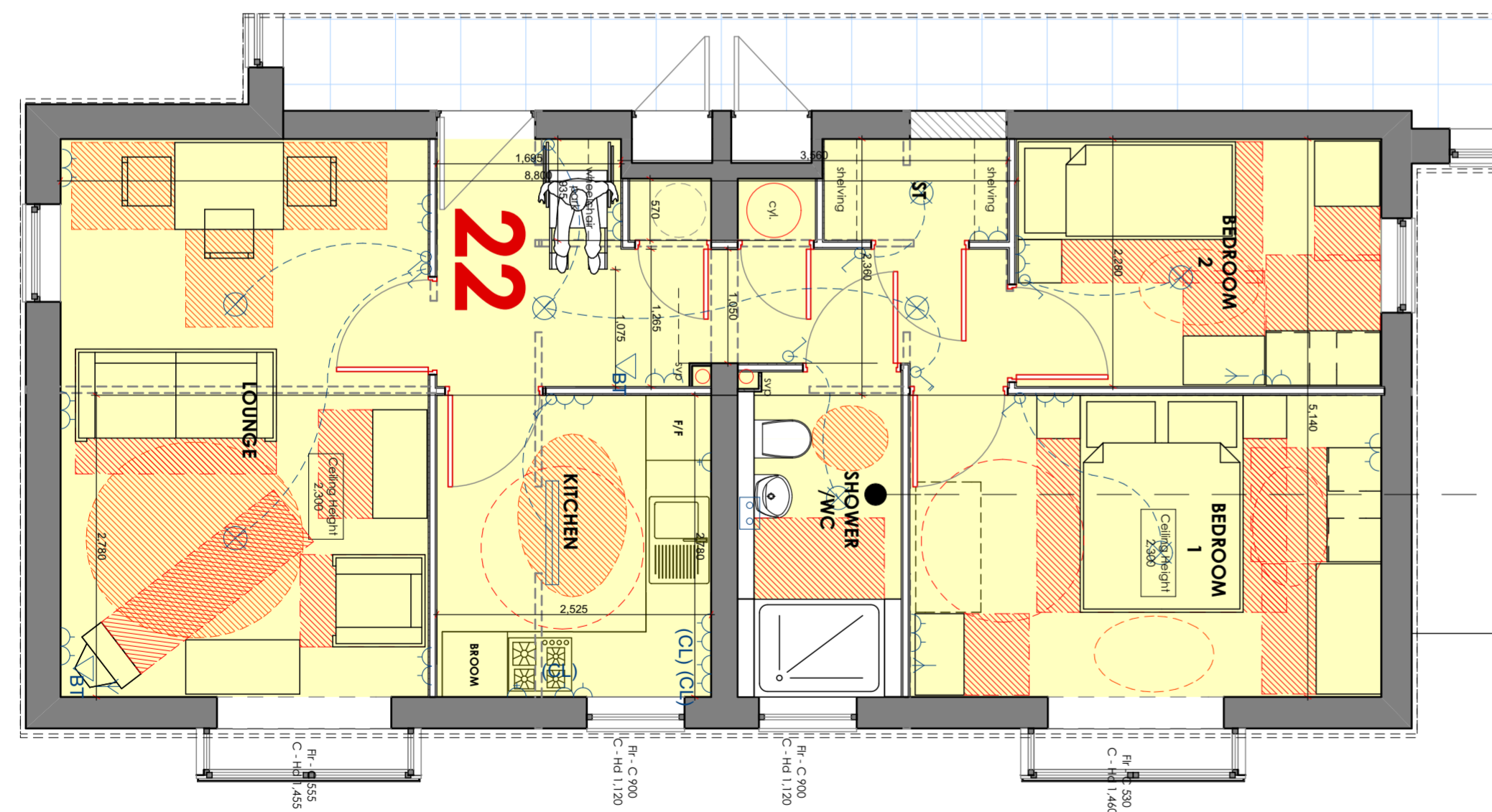


Unit Type F

2 bed 3 person unit @ 72.7m²

Guest Suite



Unit Type E (alternative)

2 bed 3 person unit @ 61.1m²
 Storage 4.27m² General
 1.38m² Tall



Shower Room

Large 2 Bed Unit:

Rev. B 05/03/14 Schematic electrical added to unit type E and shower room perspective added
 Rev. A 21/02/14 Unit type E revised to improve wheelchair accessibility
 Revision : Date : Details :

wood | goldstraw | yorath

ARCHITECTS QUANTITY SURVEYORS CDM CO-ORDINATORS

Churchill House, Regent Road, Stoke on Trent, ST1 3RH.

Tel:01782 208000 Fax:01782 208712

E-Mail : info@woodgoldstraw.co.uk

Drawing no.	Scale.
3808-03-05	1:50, 1:0.63

Drawn.	NS	Revision.
Date.	07/03/2014	- B
Sheet Size.	A2 SIZE	

Client.
 Stoke on Trent City Council

Project.
 Woolridge Court ,Smallthorne

HQI ASSESSMENT PLANS
 (SHEET 2)

Copyright. Wood Goldstraw & Yorath.

Contractors are to check all dimensions on site and refer any discrepancies to the Architects immediately.
 Do not scale from this drawing.