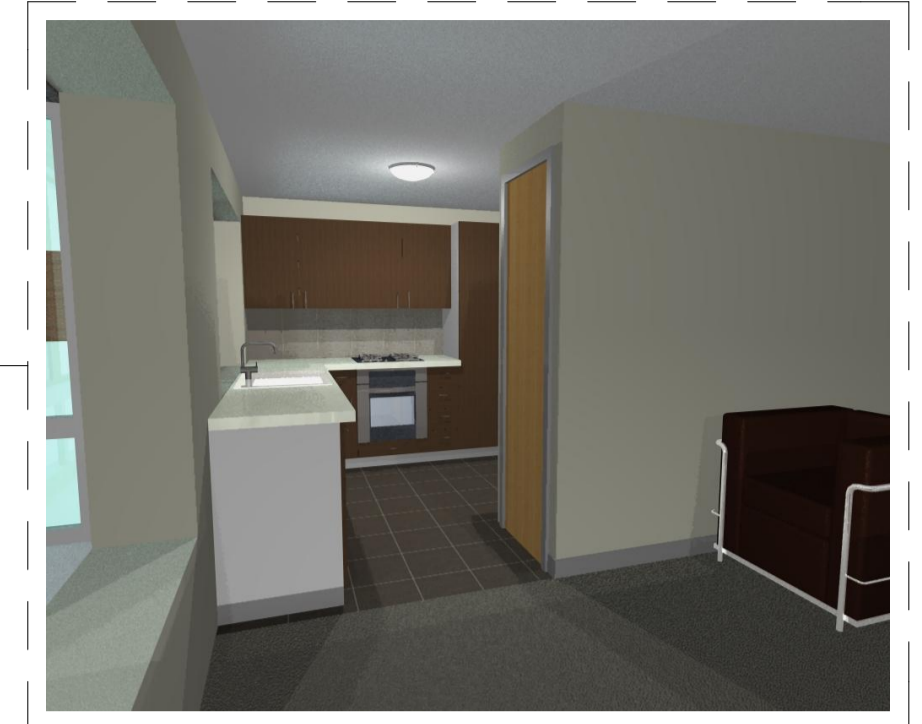
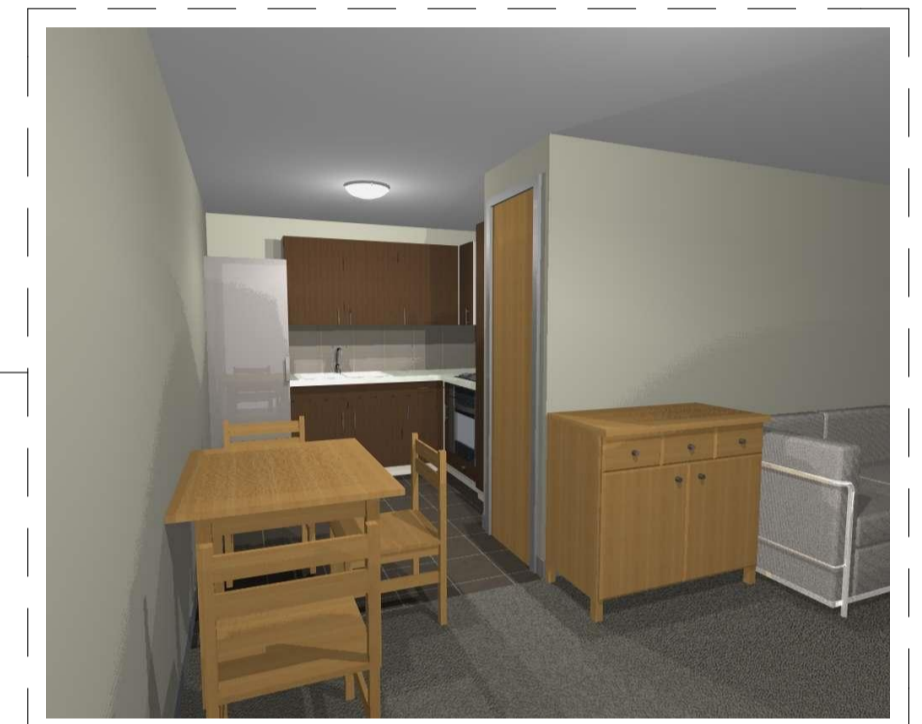




Shower Room
Typical Converted Unit:



Open Plan Kitchen
Typical Converted Unit:



Open Plan Kitchen
Typical Converted Unit:



Shower Room
Typical Small 1 Bed Unit:



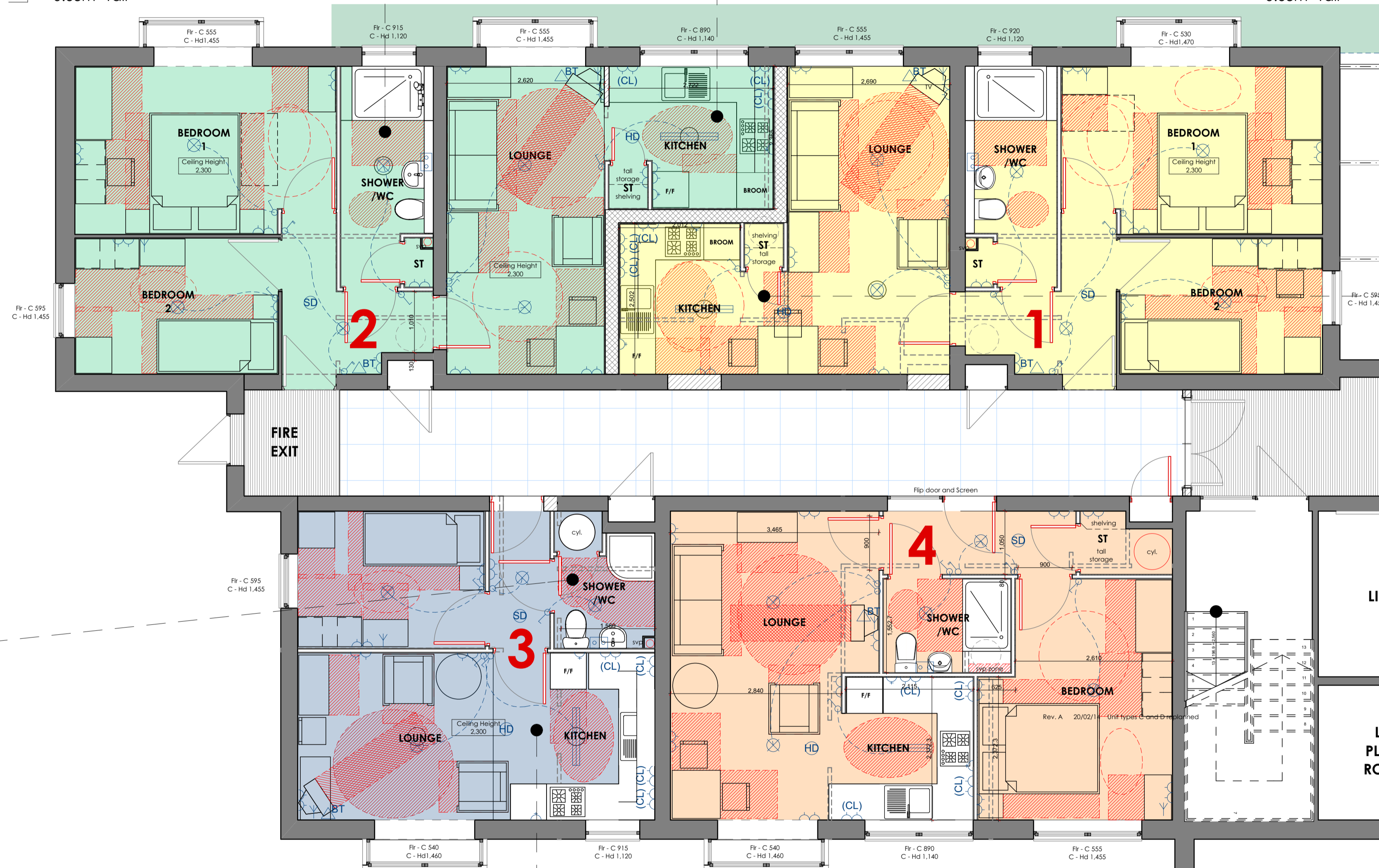
Open Plan Kitchen
Typical Small 1 Bed Unit:

Unit Type A

2 bed 3 person unit @ 50.6m²
Storage 1.65m² General
0.63m² Tall

Unit Type B

2 bed 3 person unit @ 51.4m²
Storage 1.65m² General
0.63m² Tall



Unit Type C

1 bed 1 person unit @ 30.4m²
Storage 0.55m² General
0.36m² Tall (kitchen only)

Unit Type D

1 bed 2 person unit @ 42.8m²
Storage 1.64m² General
0.62m² Tall

Note: floor areas calculated are gross internal floor areas.

Rev. B 05/03/14 floor layouts revised following client sign off and 3d kitchen and bedroom perspectives added.

Revision: Date: Details:

wood | goldstraw | yorath

ARCHITECTS QUANTITY SURVEYORS CDM CO-ORDINATORS

Churchill House, Regent Road, Stoke on Trent, ST1 3RH.

Tel: 01782 208000 Fax: 01782 208712

E-Mail: info@woodgoldstraw.co.uk

Drawing no. **3808-03-04** Scale: **1:50**

Drawn: NS Revision:
Date: 07/03/2014
Sheet Size: A1 SIZE - B

Client:
Stoke on Trent City Council

Project:
Woolridge Court, Smallthorne

HQI ASSESSMENT PLANS (SHEET 1)

Copyright. Wood Goldstraw & Yorath.
Contractors are to check all dimensions on site and refer any discrepancies to the Architects immediately.
Do not scale from this drawing.