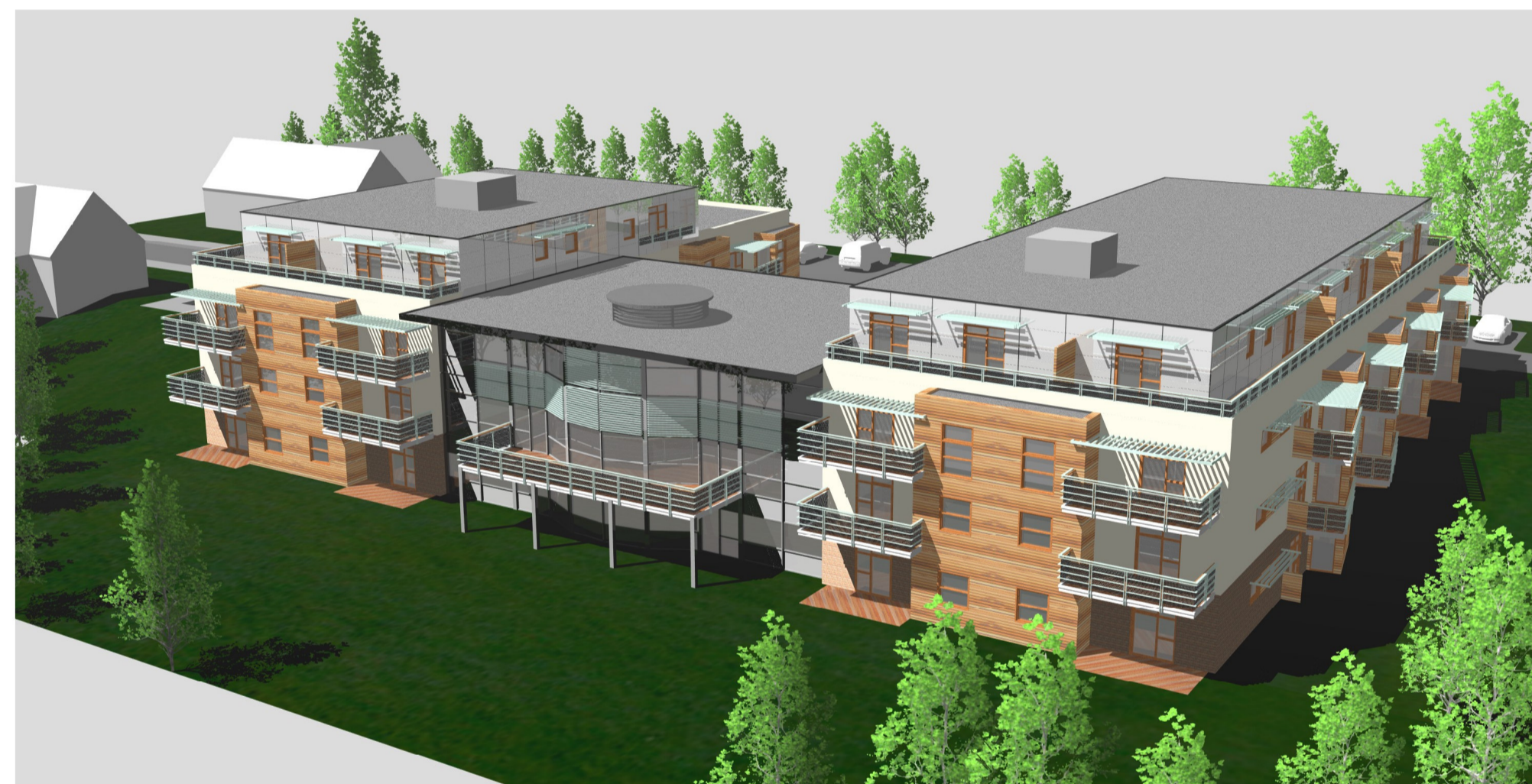


HENDAL LANE

EXTRA CARE PROVISION

The individual accommodation units are housed in two separate wings. Essentially linear blocks, these wings are modelled through the incorporation of projecting bays, which are splayed to afford both privacy from, and allow light to pass to, each adjacent unit. The handling of these bays, together with the materials used in their elevational treatment, is intended to break down the facades of each accommodation wing to a more human scale and provide visual interest. The recesses effectively formed between each bay are then used to carry balconies, or terraces at the ground floor, providing further amenity and opportunities for flexible living to each individual unit. These external spaces are afforded privacy for occupants through the handling of the projecting bay elements.

Internally, the generous access corridors to each accommodation wing include space adjacent to entrance to each unit for the storage and recharging of personal mobility vehicles, such as motorized wheelchairs and scooters, providing the opportunity for residents to move conveniently and freely right up to their own front doors. It is hoped that residents will personalise these spaces, providing an individual touch for the entrance to their homes, and creating a varied welcoming appearance to these internal circulation spaces.



Concept model indicating proposed elevational treatment

The double height open space located in the central pavilion form acts as the social centre for the development and, it is hoped, the wider community, providing excellent views out from the building across the external terrace to the South, and access to daycare, dining, relaxation and IT facilities ordered at its perimeter.

This central space is the focal point of the design and is described to its East and West by the two accommodation wings and to its North by the facilities ancillary accommodation.

A servery with full kitchen facilities provides the dining services for the building, with a relaxation/lounge space adjacent, together with access to a hair and nail salon, and bathing facilities.

The vertical circulation cores to each accommodation wing are reached via the central space and are used to afford residents progressive privacy from the communal areas. Additional relaxation/lounge facilities are provided at first floor overlooking the communal area, allowing residents to enjoy an alternative perspective on the special characteristics of the schemes primary space, which is further enhanced by the inclusion of a roof lantern.

To the South the rigid order of the composition breaks down as it meets the greater influence exerted by Nature and the buildings Southerly aspect. This replaces the treatment at the communal spaces perimeter with a large glazed screen, comprising a curved central section generated by the circular form chosen for the roof lantern above. The screen provides access to a large terrace, breaking down the delineation between internal and external space and improving amenity for users.

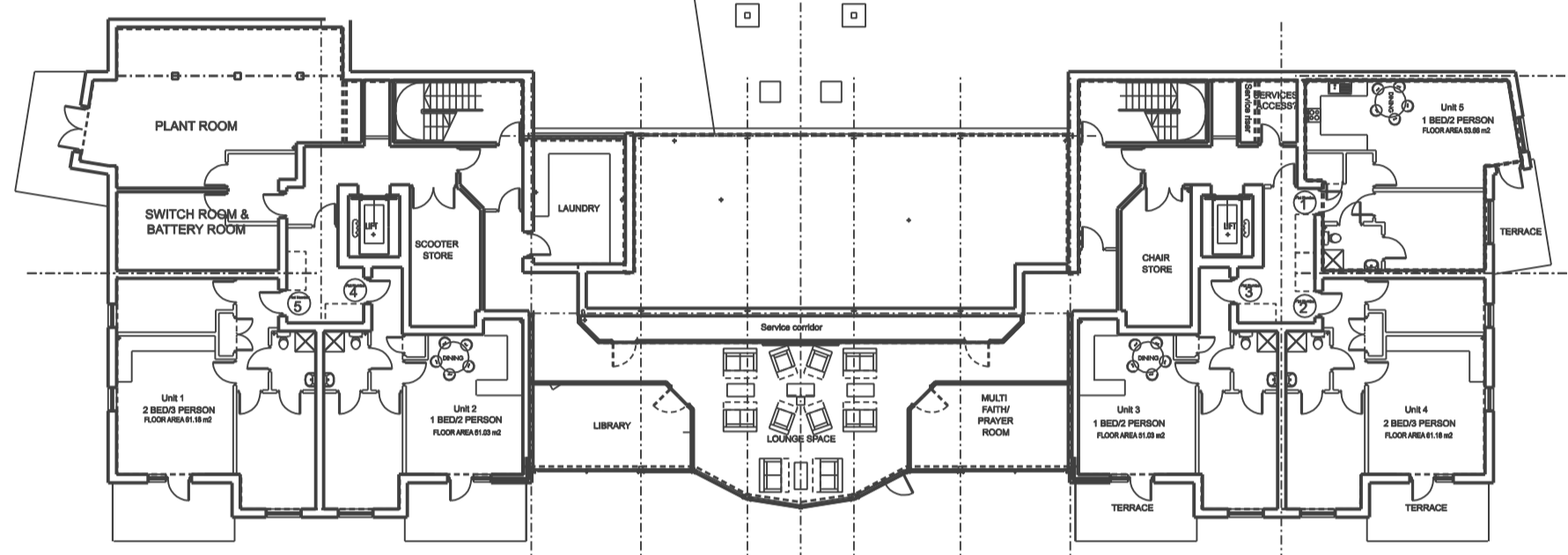
In summary, the scheme is intended to demonstrate that older generations are highly valued members of society, through the provision of a high quality facility.

FLOOR PLANS

LOWER GROUND FLOOR

- 3 No. 1-Bed 2 person units
- 2 No. 2-Bed 3 person units

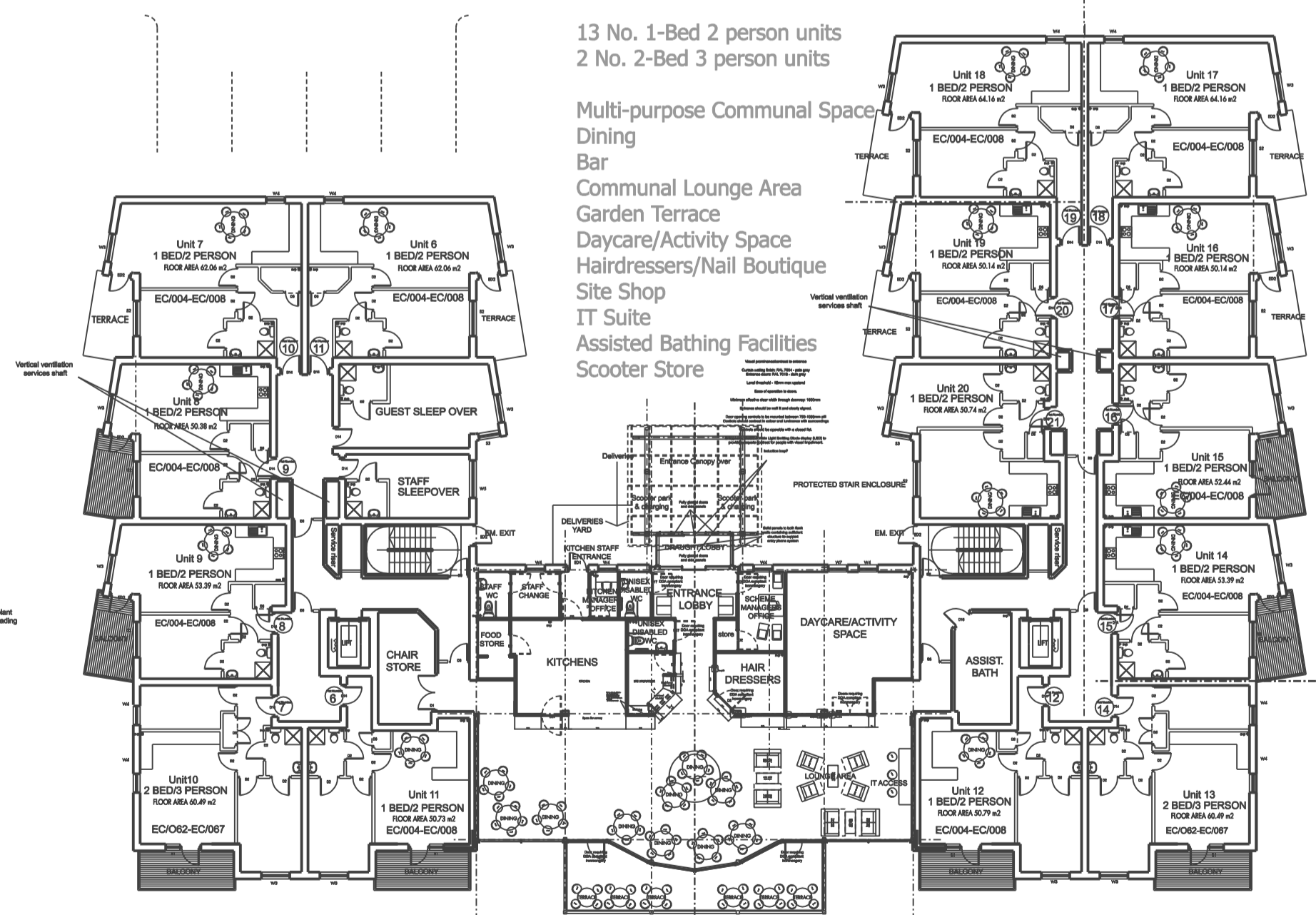
- Residents Lounge - accessing gardens
- Library
- Multi-faith/Prayer room
- Residents Laundry



GROUND FLOOR

- 13 No. 1-Bed 2 person units
- 2 No. 2-Bed 3 person units

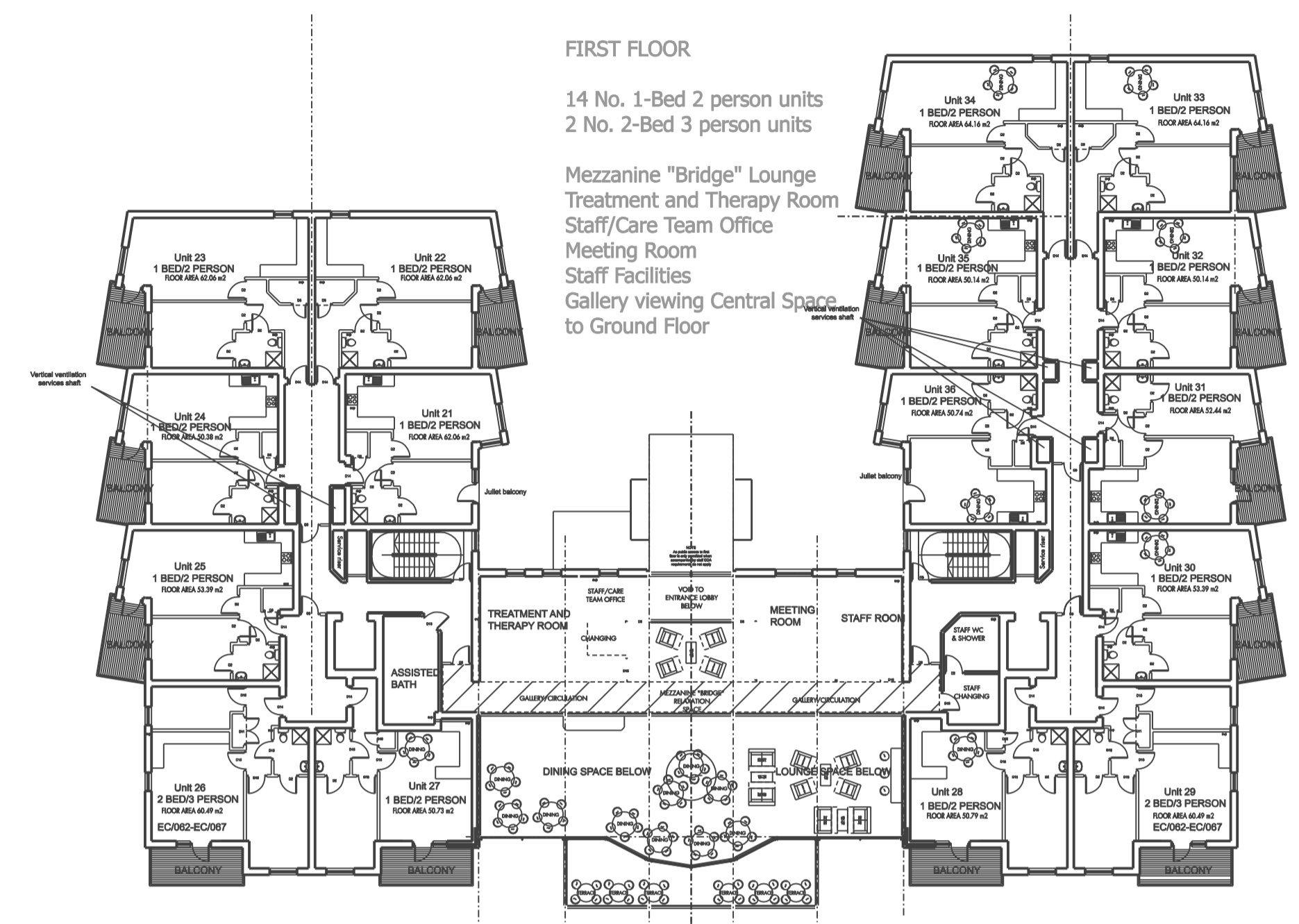
- Multi-purpose Communal Space
- Dining
- Bar
- Communal Lounge Area
- Garden Terrace
- Daycare/Activity Space
- Hairdressers/Nail Boutique
- Site Shop
- IT Suite
- Assisted Bathing Facilities
- Scooter Store



FIRST FLOOR

- 14 No. 1-Bed 2 person units
- 2 No. 2-Bed 3 person units

- Mezzanine "Bridge" Lounge
- Treatment and Therapy Room
- Staff/Care Team Office
- Meeting Room
- Staff Facilities
- Gallery viewing Central Spaces to Ground Floor



SECOND FLOOR

- 9 No. 2-Bed 3 person units

