

EXISTING TREES PROPOSED FOR RETENTION

PROPOSED TREES DENOTED WITH DIAGONAL HATCHING

PROPOSED TREES DENOTED WITH DIAGONAL HATCHING

PROPOSED TREES DENOTED WITH DIAGONAL HATCHING

PROPOSED TREES DENOTED WITH DIAGONAL HATCHING

SEMI PRIVATE SOUTH FACING EXTERNAL GARDEN SPACE FOR OLDER PERSONS ACCOMMODATION RESIDENTS AND THEIR VISITORS

SOFT LANDSCAPE PLANTING - REFER TO LANDSCAPE ARCHITECTURE PLAN FOR DETAILS

700MM HIGH FENCE PATIO AREA FOR APARTMENTS

PRIVATE EXTERNAL PATIO AREA FOR APARTMENTS

700MM HIGH FENCE PATIO AREA FOR APARTMENTS

700MM HIGH FENCE PATIO AREA FOR APARTMENTS

1800MM HIGH FENCE PATIO AREA FOR APARTMENTS

PROPOSED TREES DENOTED WITH DIAGONAL HATCHING

700MM HIGH FENCE

PRIVATE EXTERNAL PATIO AREA FOR APARTMENTS

PRIVATE EXTERNAL PATIO AREA FOR APARTMENTS

SEMI PRIVATE PATI FOR OLDER PERSONS ACCOMMODATION RESIDENTS AND VISITORS WITH GATED ACCESS

RWD FROM TERRACE

RWD FROM ROOF

RWD FROM ROOF

RWD FROM ROOF

RWD FROM ROOF

RWD FROM ROOF

RWD FROM ROOF

RWD FROM ROOF

RWD FROM ROOF

1800MM HIGH FENCE PUBLIC FOOTPATH TO ELLSBORO ROAD

SOFT LANDSCAPE PLANTING - REFER TO LANDSCAPE ARCHITECTURE PLAN FOR DETAILS

700MM HIGH FENCE

PRIVATE EXTERNAL PATIO AREA FOR APARTMENTS

700MM HIGH FENCE

700MM HIGH FENCE

1800MM HIGH FENCE

SOFT LANDSCAPE PLANTING - REFER TO LANDSCAPE ARCHITECTURE PLAN FOR DETAILS

SOFT LANDSCAPE PLANTING - REFER TO LANDSCAPE ARCHITECTURE PLAN FOR DETAILS

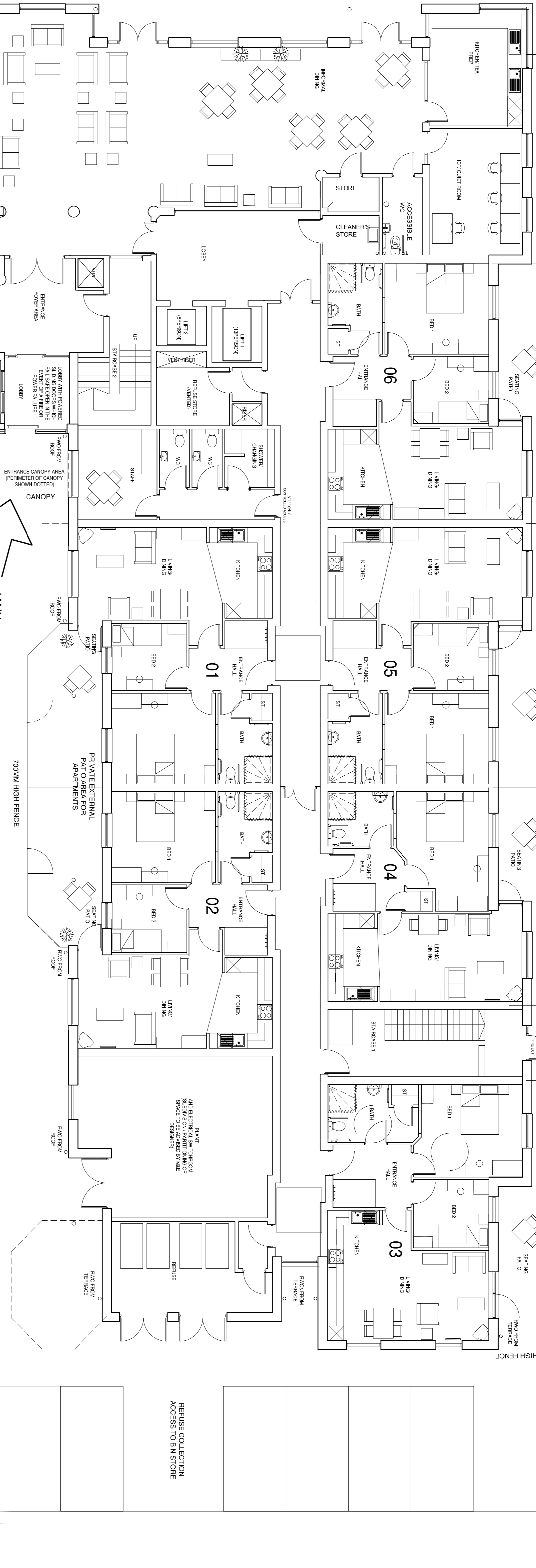
SOFT LANDSCAPE PLANTING - REFER TO LANDSCAPE ARCHITECTURE PLAN FOR DETAILS

SOFT LANDSCAPE PLANTING - REFER TO LANDSCAPE ARCHITECTURE PLAN FOR DETAILS

SOFT LANDSCAPE PLANTING - REFER TO LANDSCAPE ARCHITECTURE PLAN FOR DETAILS

SOFT LANDSCAPE PLANTING - REFER TO LANDSCAPE ARCHITECTURE PLAN FOR DETAILS

SOFT LANDSCAPE PLANTING - REFER TO LANDSCAPE ARCHITECTURE PLAN FOR DETAILS



MAIN ENTRANCE

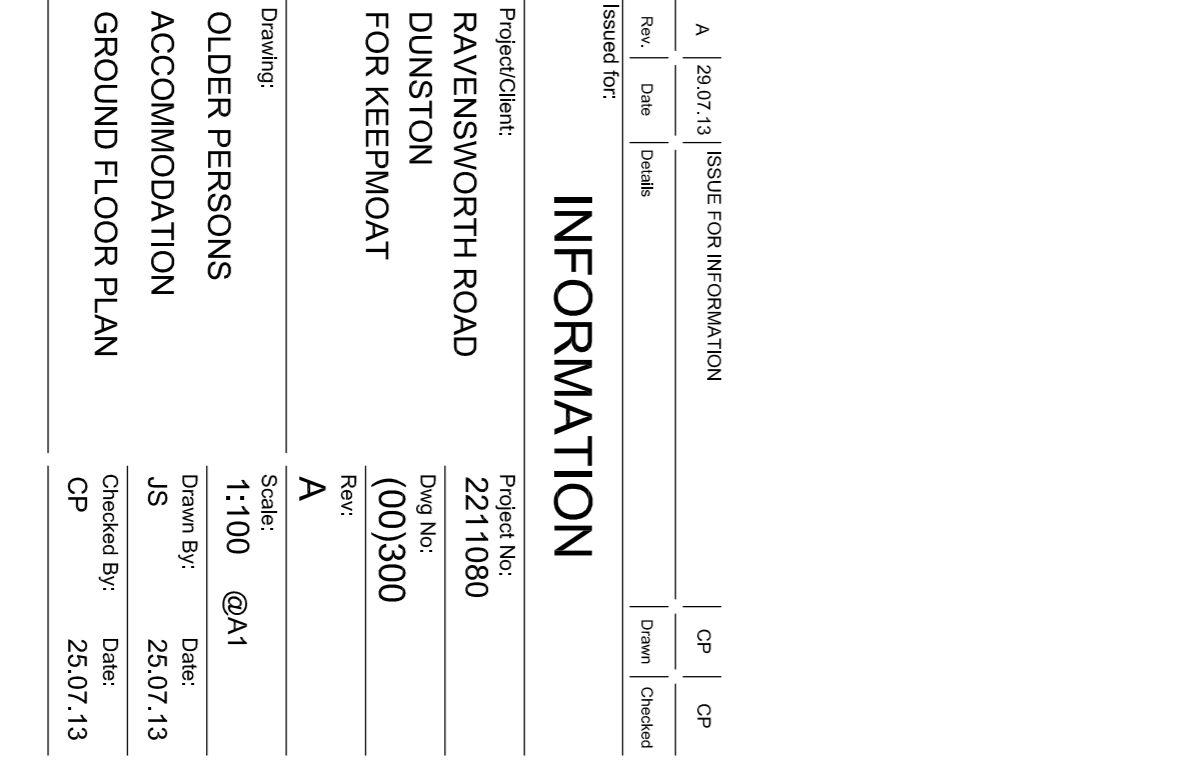
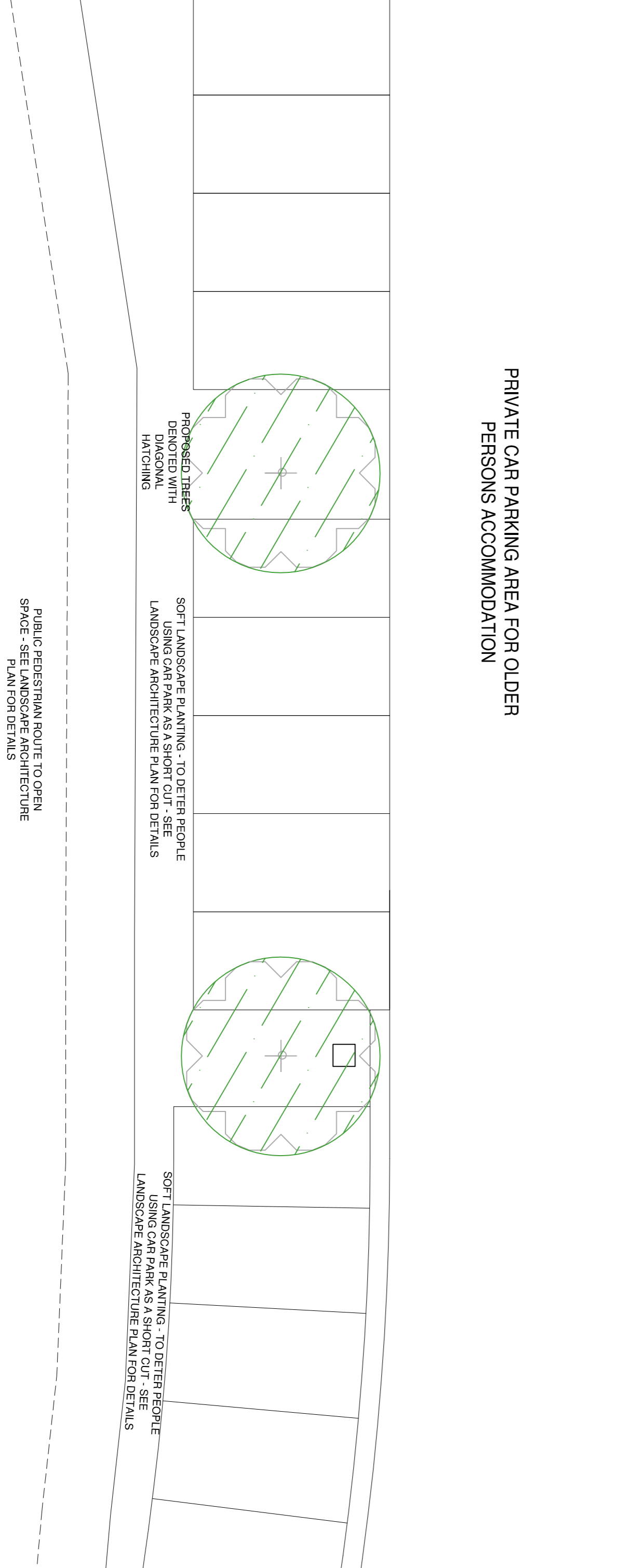
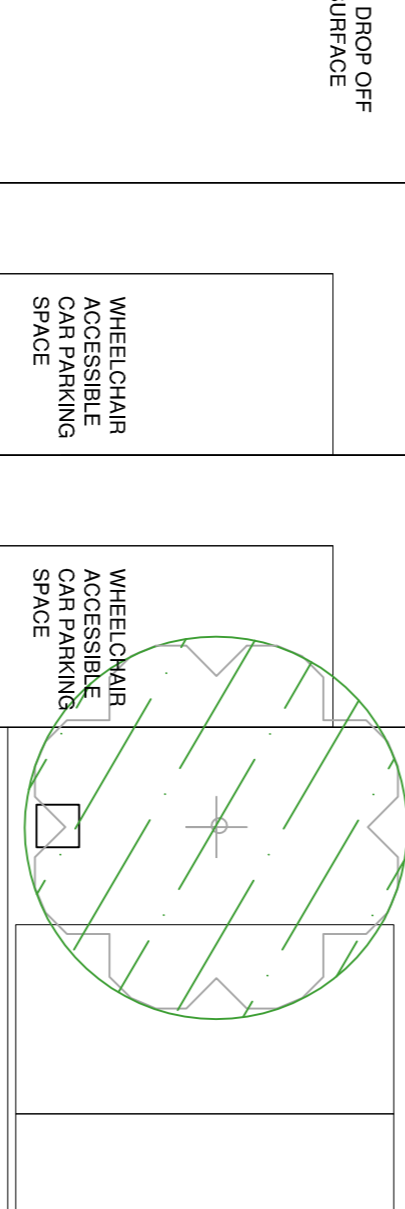
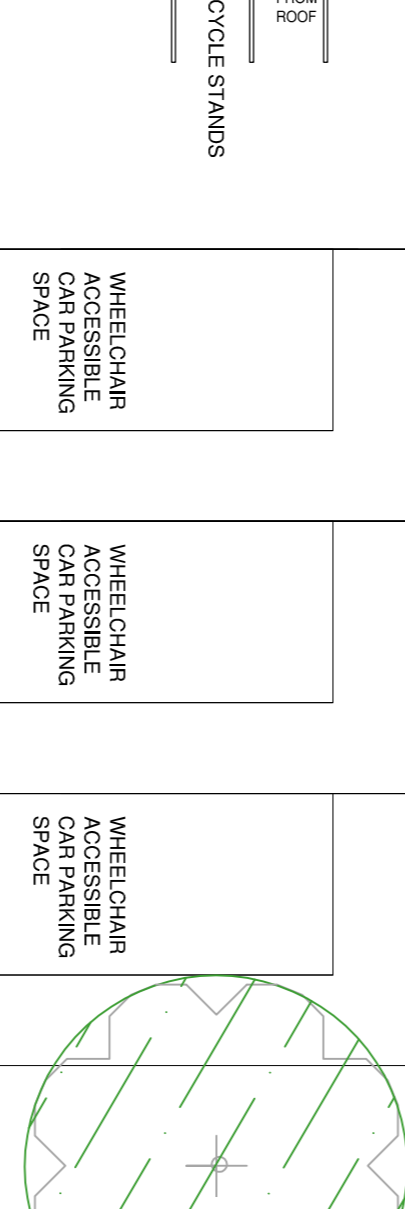
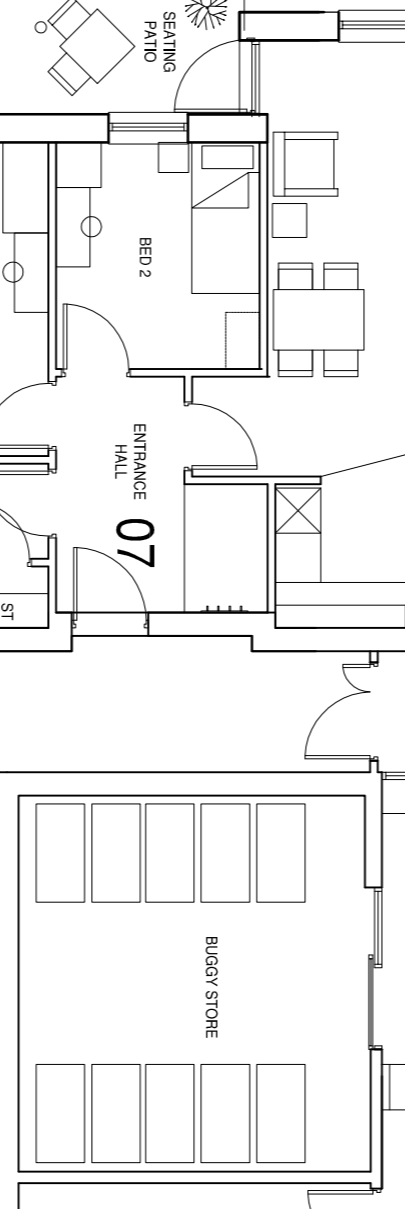
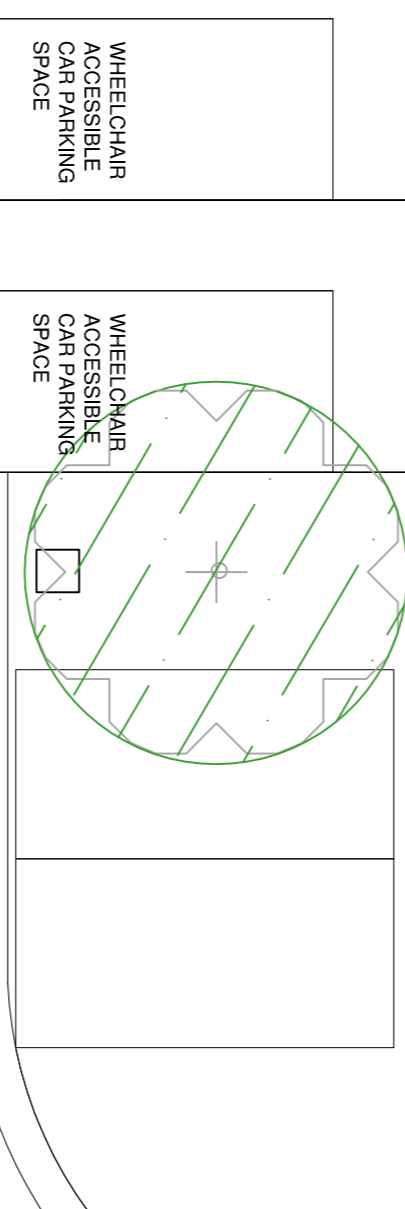
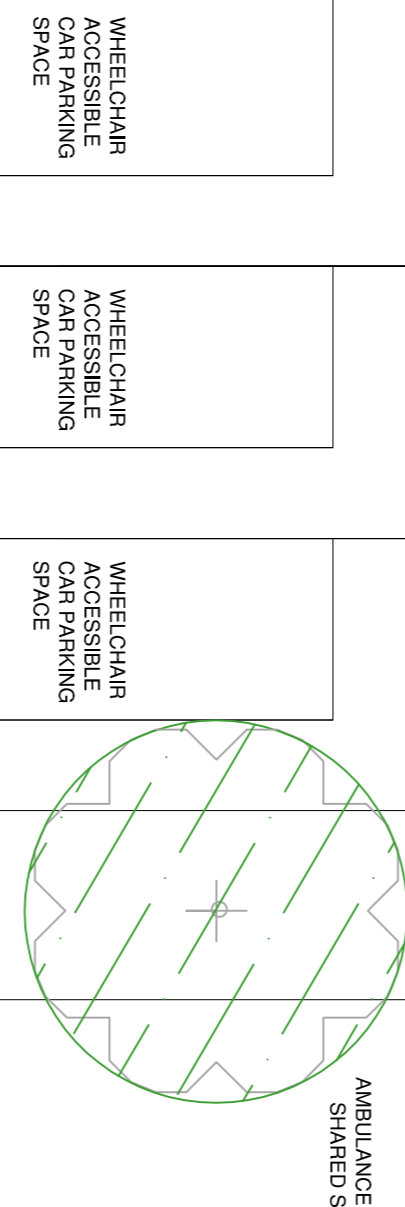
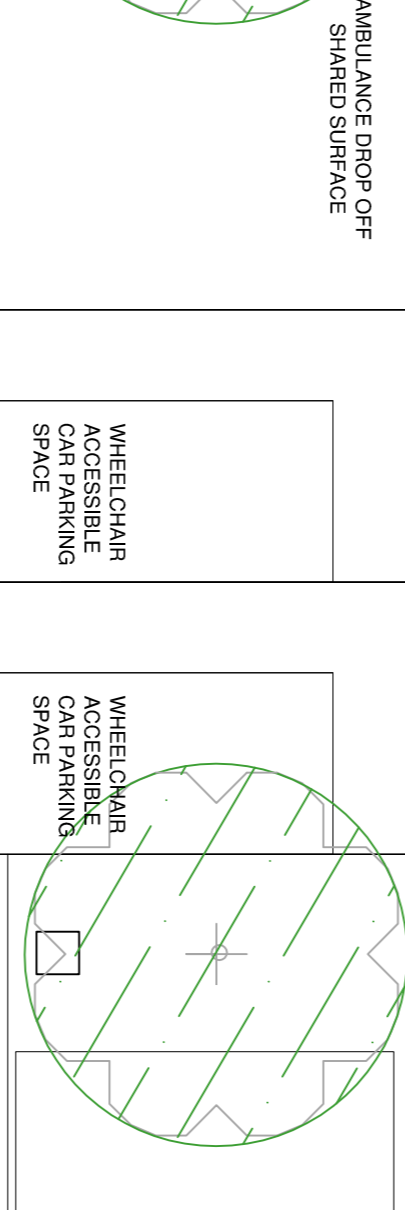
700MM HIGH FENCE

700MM HIGH FENCE

700MM HIGH FENCE

700MM HIGH FENCE

PRIVATE CAR PARKING AREA FOR OLDER PERSONS ACCOMMODATION



PROPOSED ACCOMMODATION SCHEDULE:

THIRD FLOOR	12 NO. APARTMENTS (1 COR @ 3bed, 1 Bed) 7no. @ 3bed (2 Bed)
1255M ² GIFA	INCLUDING INTERNAL WALLS TAKEN FROM THE INSIDE FACE OF EXTERNAL WALLS
FIRST & SECOND FLOOR	15 NO. APARTMENTS (1 COR @ 3bed, 1 Bed) 10no. @ 3bed (2 Bed) 1no. @ 3bed (1 Bed)
1225M ² GIFA	INCLUDING INTERNAL WALLS TAKEN FROM THE INSIDE FACE OF EXTERNAL WALLS
GROUND FLOOR	9 NO. APARTMENTS (1 COR @ 3bed, 1 Bed) 2no. @ 3bed (2 Bed) 7no. @ 3bed (1 Bed)
1225M ² GIFA	INCLUDING INTERNAL WALLS TAKEN FROM THE INSIDE FACE OF EXTERNAL WALLS
TOTAL	47 NO. APARTMENTS
DENSITY BREAKDOWN:	11NO. 1 BED APARTMENTS 32NO. 2 BED APARTMENTS

GENERAL NOTE:
THIS DRAWING IS FOR THE PURPOSES OF THE FULL PLANNING APPLICATION FOR OLDER PERSONS ACCOMMODATION.
INTERNAL LAYOUTS ARE FOR ILLUSTRATIVE PURPOSES ONLY AND ARE SUBJECT TO DETAIL DESIGN. EXTERNAL LANDSCAPE DETAILS AND EXTERNAL MAKE DETAILS ARE TO BE SUBJECT TO PLANNING CONDITIONS.

ISSUE FOR INFORMATION
25/07/13

PROJECT INFORMATION
RAVENSWORTH ROAD
DUNSTON
FOR KEEPWOAT

OLD PERSONS ACCOMMODATION
GROUND FLOOR PLAN

ARCHIAL

GROUND FLOOR LAYOUT

8th Floor, Percy House, Percy Street, Newcastle, NE1 4PW
T: +44 (0)191 222 1116 F: +44 (0)191 222 1119
www.archialgroup.com