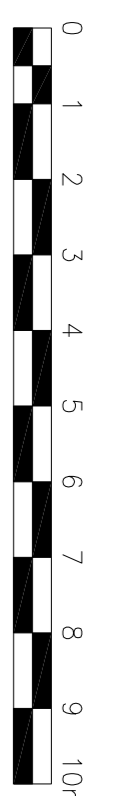
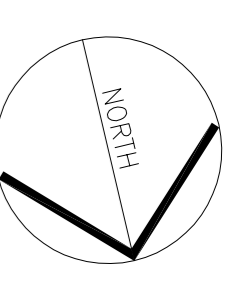


THIS DRAWING IS SUBJECT TO THE VERIFICATION BY ARCHIALIAL AND ASSOCIATED ARCHITECTS OF THE INFORMATION PROVIDED BY THE CLIENT AND CONSULTANTS. THE DRAWING IS SUBJECT TO THE CONSULTATION WITH STATUTORY BODIES AND ASSOCIATED BODIES. THE DRAWING IS SUBJECT TO THE CONSULTATION WITH STATUTORY BODIES AND ASSOCIATED BODIES. THE DRAWING IS SUBJECT TO THE CONSULTATION WITH STATUTORY BODIES AND ASSOCIATED BODIES.



**PROPOSED ACCOMMODATION SCHEDULE:**

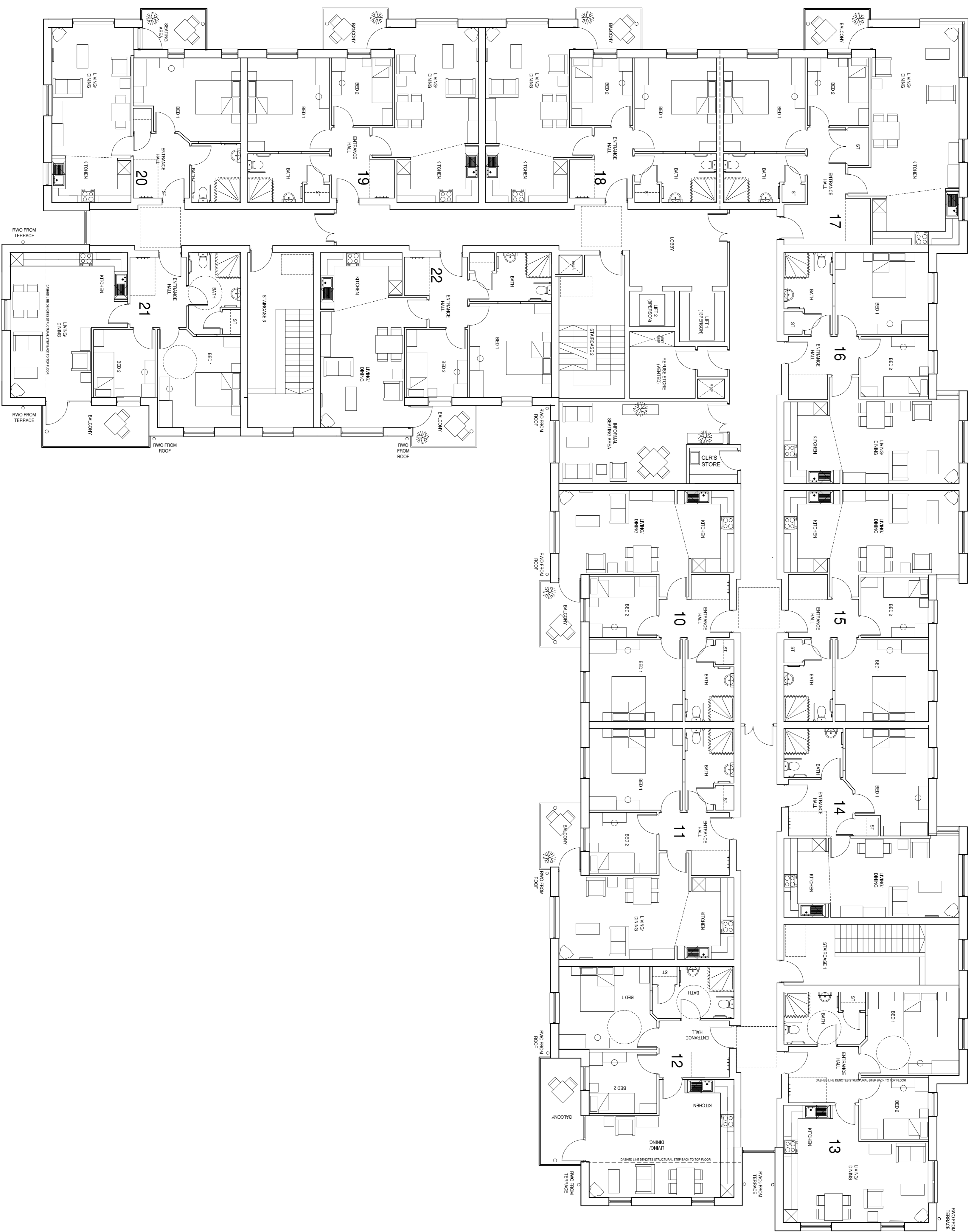
<b>THIRD FLOOR</b>	12 NO. APARTMENTS FLOOR	4 no. @ 3bed (1 Bed)	• 2no. @ 3bed (2 Bed)	• 1no. @ 3bed (2 Bed)
<b>FIRST &amp; SECOND FLOOR</b>	13 NO. APARTMENTS FLOOR	• 1no. @ 3bed (1 Bed)	• 1no. @ 3bed (2 Bed)	• 1no. @ 3bed (1/2 Bed)
<b>GROUND FLOOR</b>	9 NO. APARTMENTS FLOOR	• 2no. @ 3bed (1 Bed)	• 7no. @ 7bed (2 Bed)	
<b>TOTAL</b>	<b>47 NO. APARTMENTS</b>			

<b>1225M<sup>2</sup> GIFA</b>	1225M <sup>2</sup> GIFA
<b>INCLUDING INTERNAL WALLS TAKEN FROM THE INSIDE FACE OF EXTERNAL WALLS</b>	INCLUDING INTERNAL WALLS TAKEN FROM THE INSIDE FACE OF EXTERNAL WALLS

<b>THIRD FLOOR</b>	12 NO. APARTMENTS
<b>SECOND FLOOR</b>	13 NO. APARTMENTS
<b>FIRST FLOOR</b>	13 NO. APARTMENTS
<b>GROUND FLOOR</b>	9 NO. APARTMENTS
<b>TOTAL</b>	<b>47 NO. APARTMENTS</b>

**GENERAL NOTE:**

THIS DRAWING IS FOR THE PURPOSES OF THE FULL PLANNING APPLICATION FOR OLDER PERSONS ACCOMMODATION. INTERNAL LAYOUTS ARE FOR ILLUSTRATIVE PURPOSES ONLY AND ARE SUBJECT TO DETAIL DESIGN. EXTERNAL LANDSCAPE DETAILS AND EXTERNAL M&E DETAILS ARE TO BE SUBJECT TO PLANNING CONDITIONS.



**FIRST FLOOR LAYOUT**

<b>PLANNING</b>	ISSUE FOR INFORMATION	CP	CP
Rev.	Date	Drawn	Checked
<b>PLANNING</b>			
Project/Client:	Project No:	2211080	
RAVENSWORTH ROAD	Dwg No:	(00)301	
DUNSTON	Rev:	A	
FOR KEEPWOAT	Scale:	@A1	
Drawing:	Drawn By:	JS	Date: 25.07.13
OLDER PERSONS	Checked By:	CP	Date: 25.07.13
ACCOMMODATION			
FIRST FLOOR PLAN			



8th Floor, Percy House, Percy Street, Newcastle, NSW, AUSTRALIA  
 T: +61 (0)191 222 1116 F: +61 (0)191 222 1119  
 www.archialgroup.com