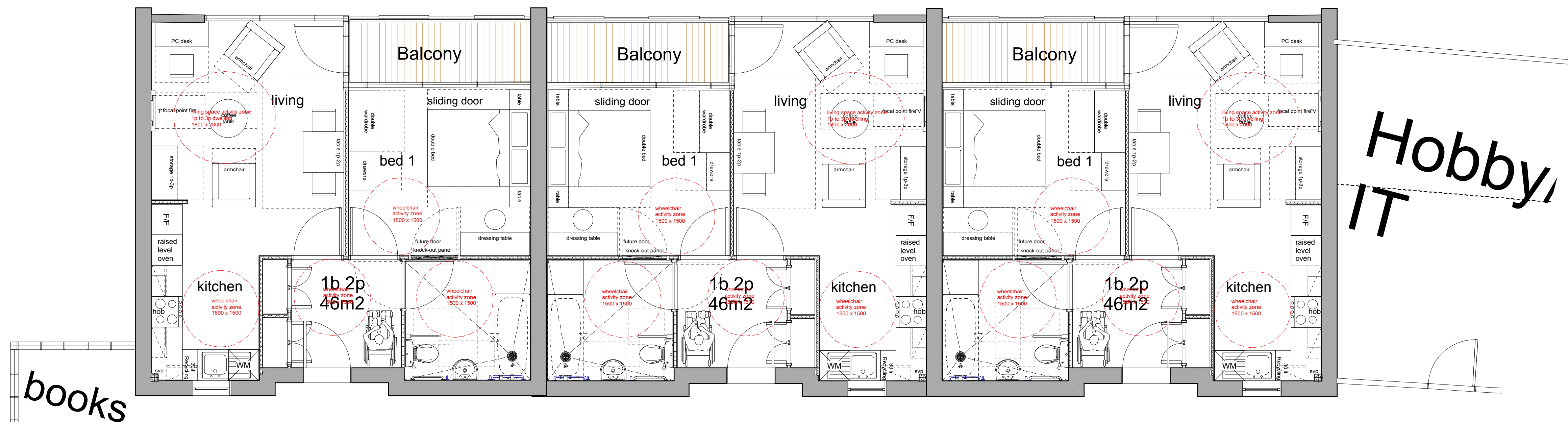
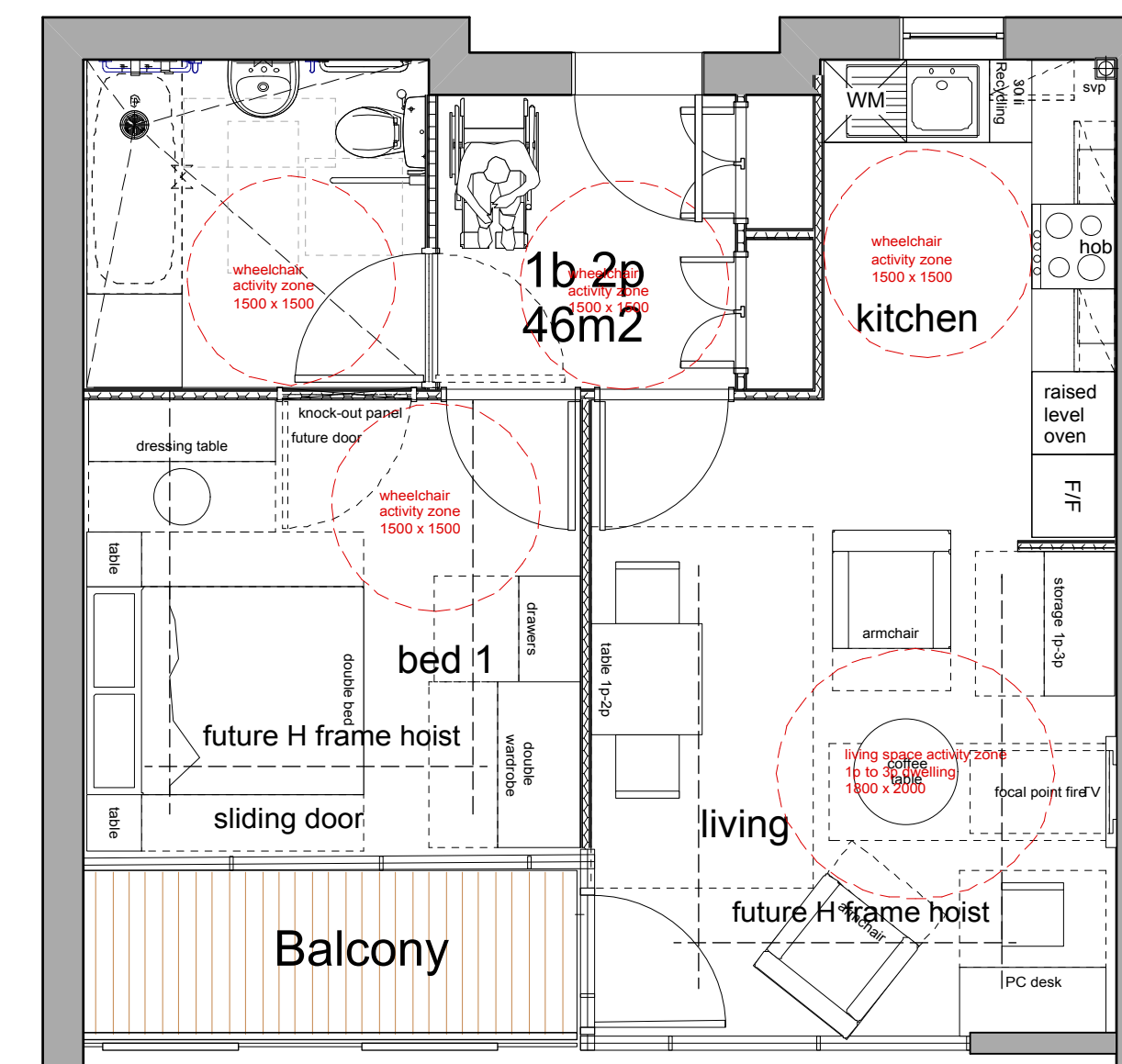
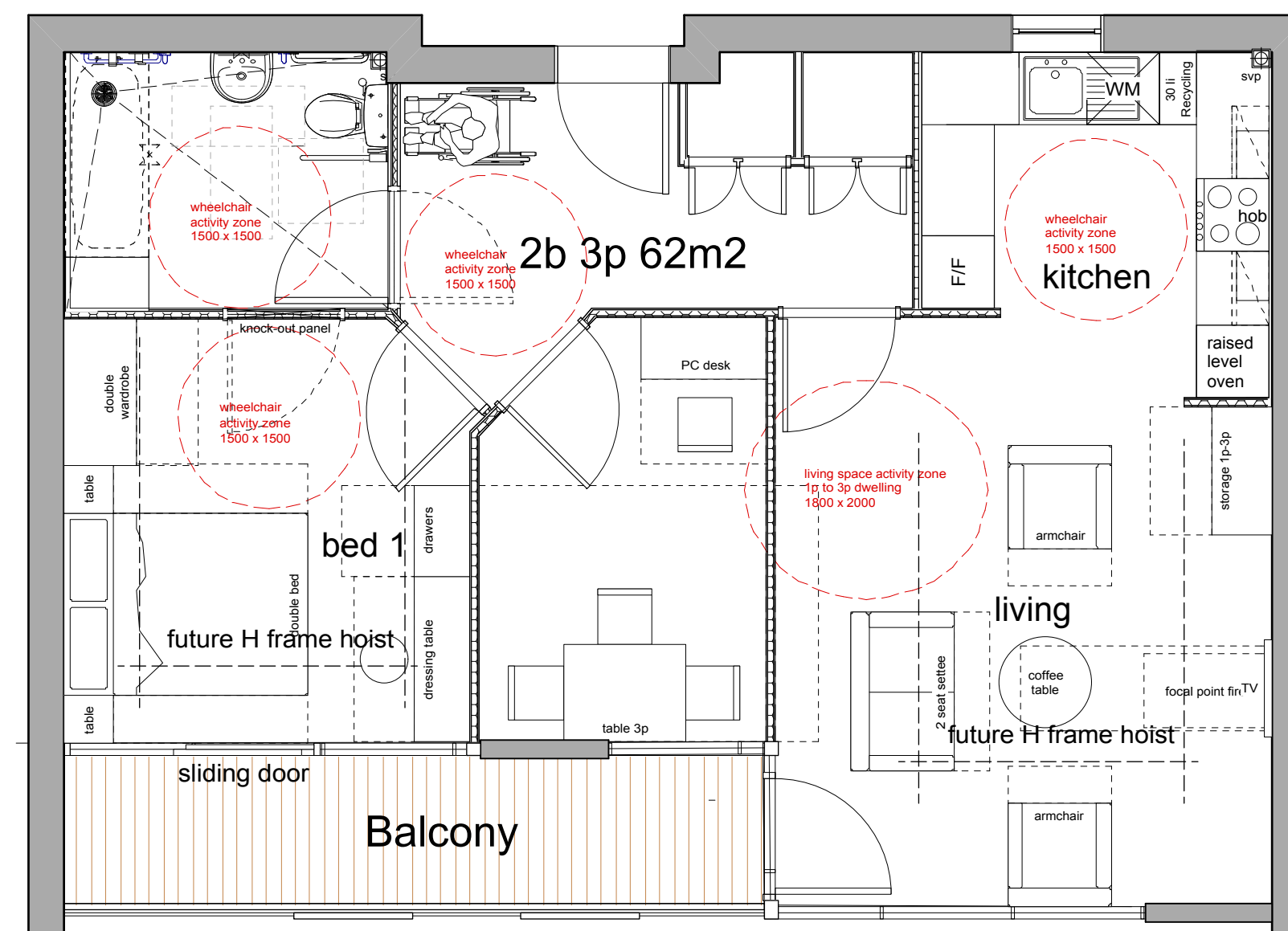
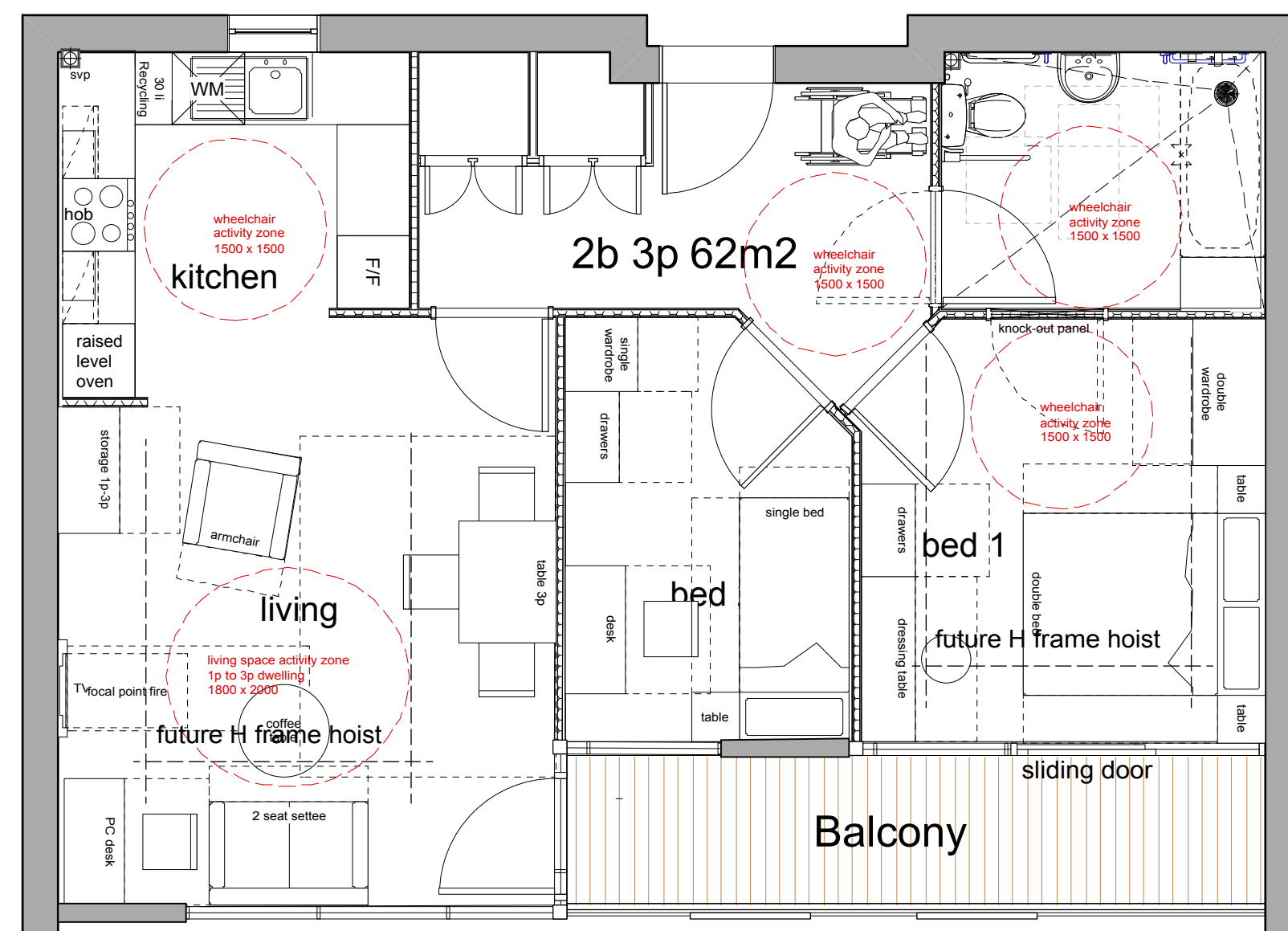
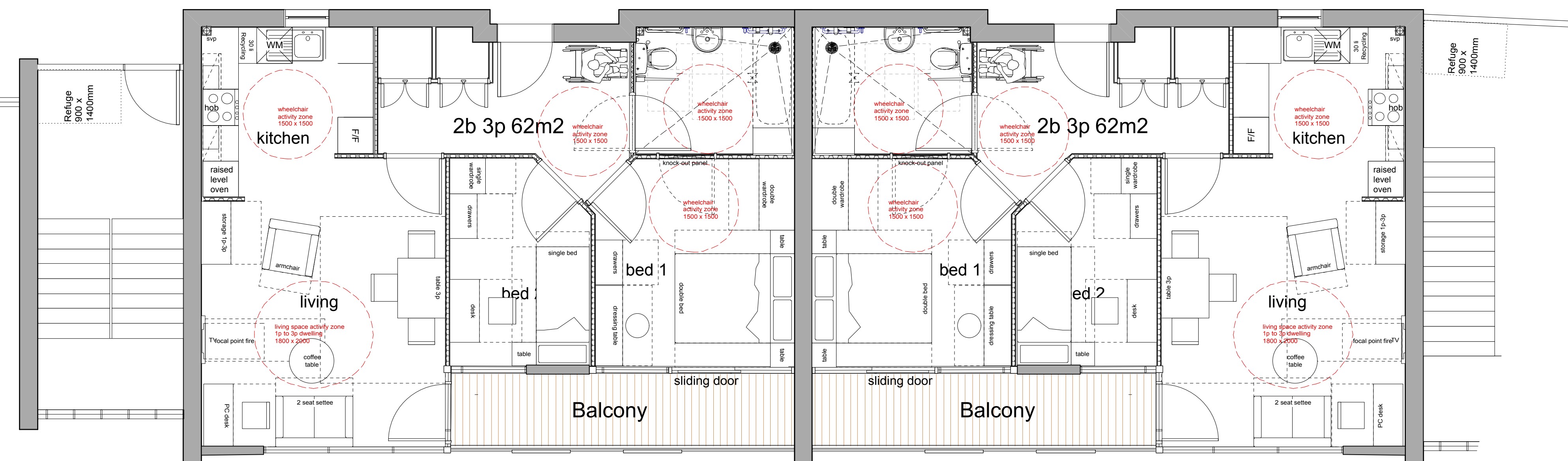


This drawing illustrates a sketch proposal only and as such is subject to detailed site investigation including ground conditions, contaminants, drainage, design and planning/density negotiations with the relative Authorities. The layout has been based on an OS map, prepared by others, and visual estimate of site features and adjacent property elevations, eaves and ridge heights, and its accuracy should be verified by site and elevational surveys to ascertain exact dimensions and levels. It has not been considered in respect of the CDM legislation.



Typical flat / corridor configuration



Typical 2 bed size flat showing second bedroom in place with H Frame hoist positions shown. If hoisting is required in the bathroom, access will be direct from the bedroom where H Frame is used to hoist person into shower chair which is then taken into shower or over wc.

Typical 2 bed size flat showing second bedroom area as part of lounge with H Frame hoist positions shown. If hoisting is required in the bathroom, access will be direct from the bedroom where H Frame is used to hoist person into shower chair which is then taken into shower or over wc.

Typical 1 bed flat with H Frame hoist positions shown. If hoisting is required in the bathroom, access will be direct from the bedroom where H Frame is used to hoist person into shower chair which is then taken into shower or over wc.

FEASIBILITY

Kyle Smart Associates

Chartered Architects & Building Consultants
The Barn, Butchers Wick, Sewell, Nr Dunstable, Beds LU6 1RP
tel 01582 690222 fax 01582 690333
email KyleSmart@KyleSmartAssociates.co.uk

Project: Central Bedfordshire
Dukeminster Dunstable
Drawing: Proposed flat layouts

Scale: 1:50@A1	Drg No	rev
Date: Dec-12	12050sk1.012	
drawn CW	checked	CS