

SCHEDULE OF ACCOMMODATION

EXTRA CARE FLATS

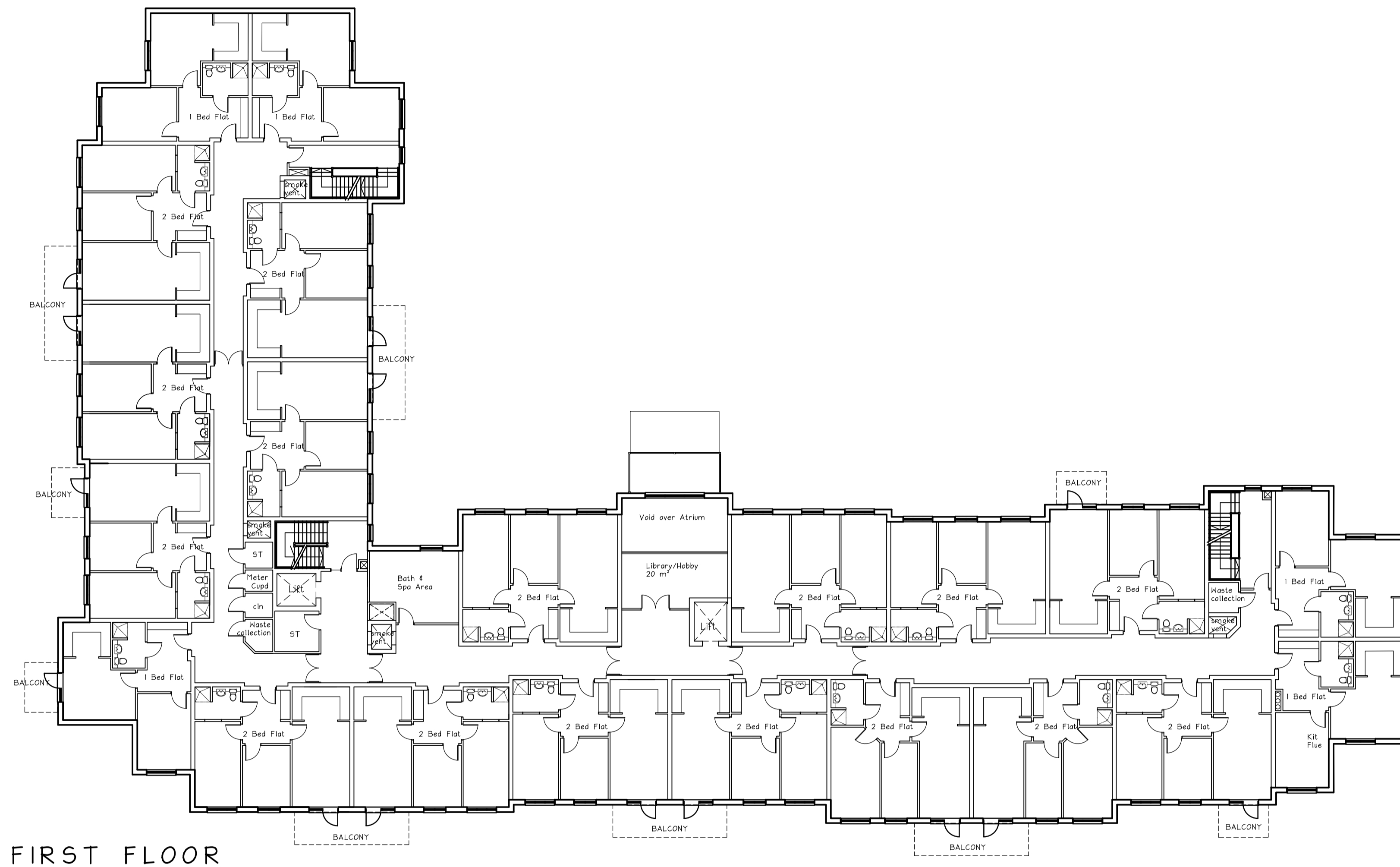
GROUND FLOOR - 12 x 2 Bed flats + 3 x 1 Bed flats
 FIRST FLOOR - 16 x 2 Bed flats + 5 x 1 Bed flats
 SECOND FLOOR - 16 x 2 Bed flats + 5 x 1 Bed flats
 TOTAL - 57 Flats (44 x 2 Bed flats & 13 x 1 Bed flats)

GROSS INTERNAL FLOOR AREA

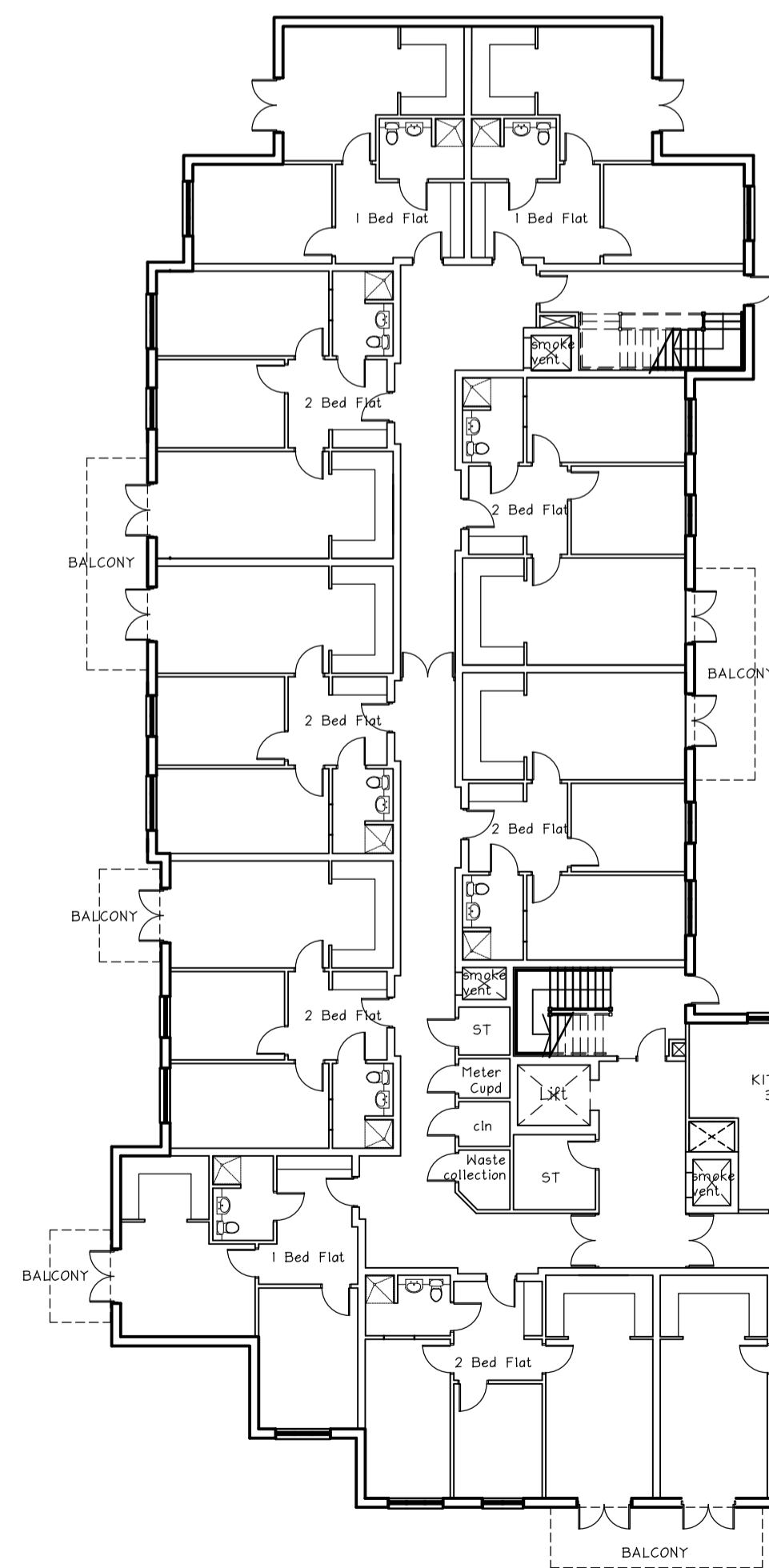
2 BED FLATS - 67.5m² minimum
 1 BED FLATS - 55m² minimum

GROUND FLOOR - 1935 m²
 FIRST FLOOR - 1925 m²
 SECOND FLOOR - 1925 m²

TOTAL - 5785 m²



FIRST FLOOR



GROUND FLOOR

Rev.	Revision	Date	Drawn	Checked
K	LAUNDRY AND CARE OFFICE SWAPPED, SHOP ALLOWED FOR	28.05.13	DK	
J	AMENDMENTS TO MAIN ENTRANCE AREA AS CLIENT INSTRUCTIONS	15.05.13	DK	
I	SECOND FLOOR BALCONIES REMOVED TO SOUTH AND WEST AND DOORS TO GROUND FLOOR APARTMENTS ADDED	26.04.13	DK	
H	Updated to incorporate comments(main entrance west corridor end)	26.03.13	DK	
G	Updated to incorporate comments	08.03.13	DK	



Castleoak Care Developments Limited
 Raglan House, Malthouse Avenue, Cardiff Gate Business Park, Cardiff, CF23 8RA
 T: 029 2054 8800 F: 029 2054 8809 www.castleoak.co.uk

Client **WORCESTER COMMUNITY HOUSING**
 Project **PROPOSED CARE DEVELOPMENT**
 Location **NEWTOWN ROAD, WORCESTER**
 Title **EXTRA CARE FLATS
 GROUND / FIRST FLOOR**

Scale	Date	Drawn	Checked
A1@1:200	MAY 11	CAP/CD	Checked

Client no.	Job no.	Drawing no.	Revision
	A-577	70	K



For construction purposes dimensions shall not be scaled & figured dimensions must be verified on site before work commences. This drawing is copyright © Carless & Adams Partnership (01628 665131)