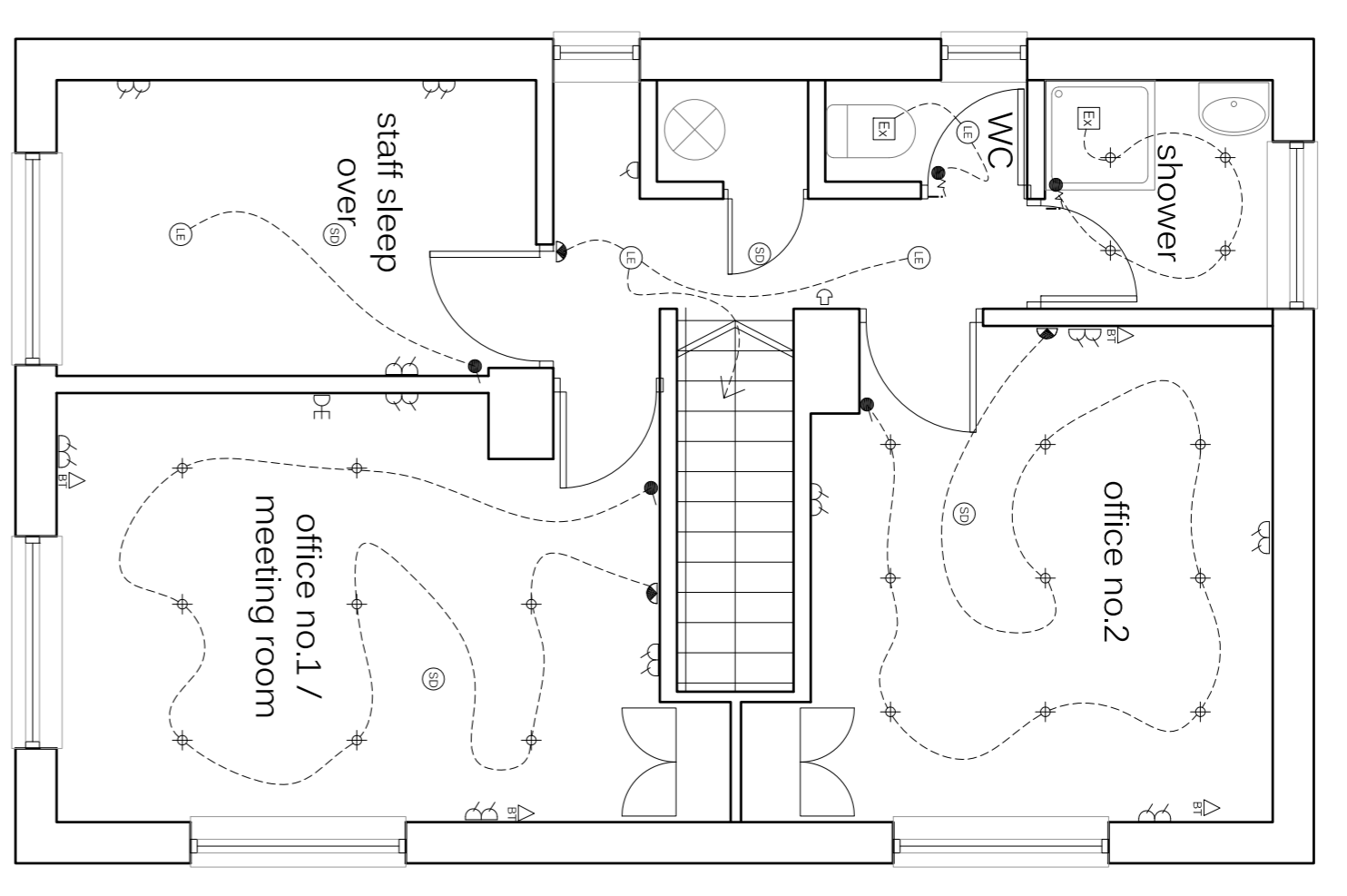


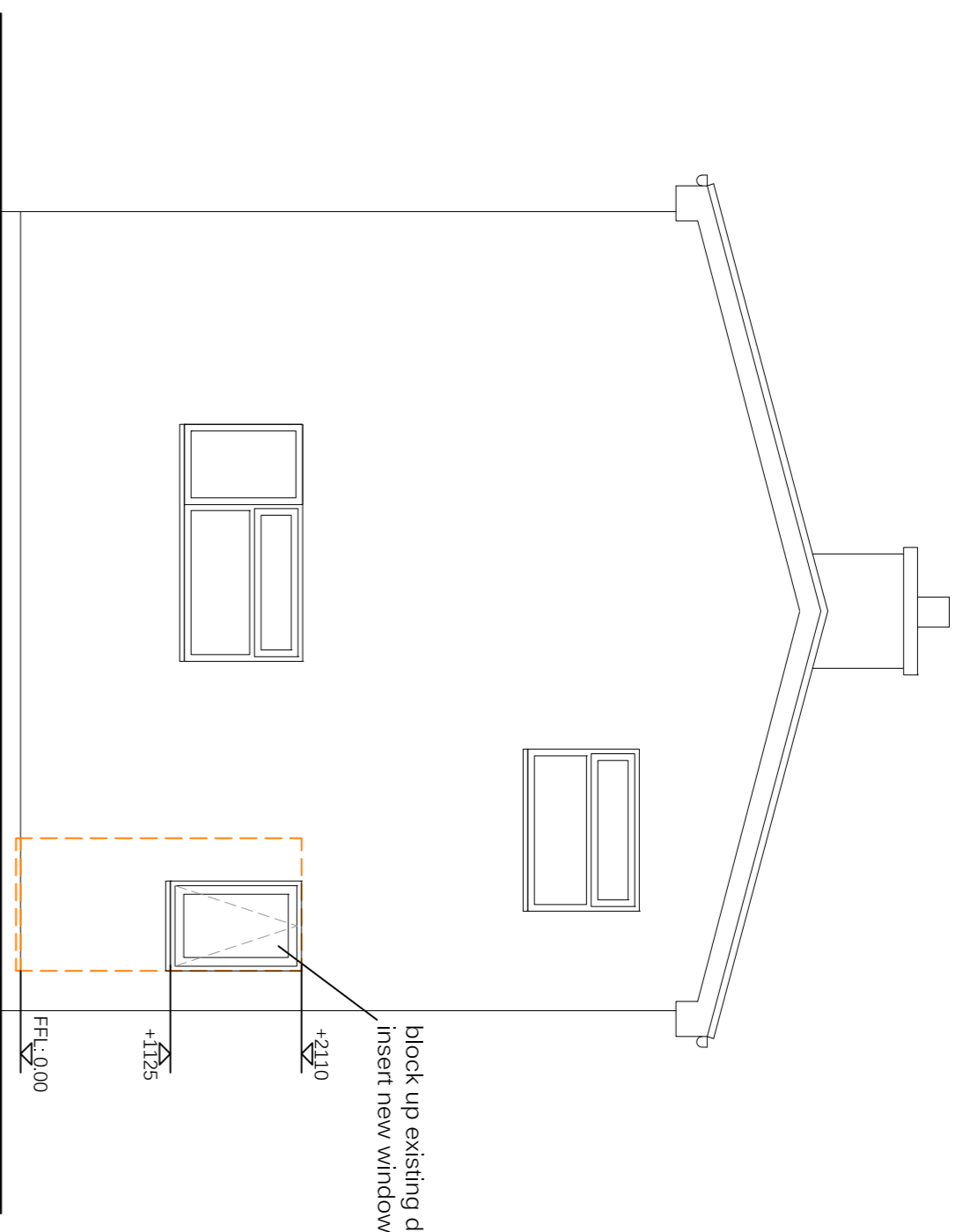
ground floor plan



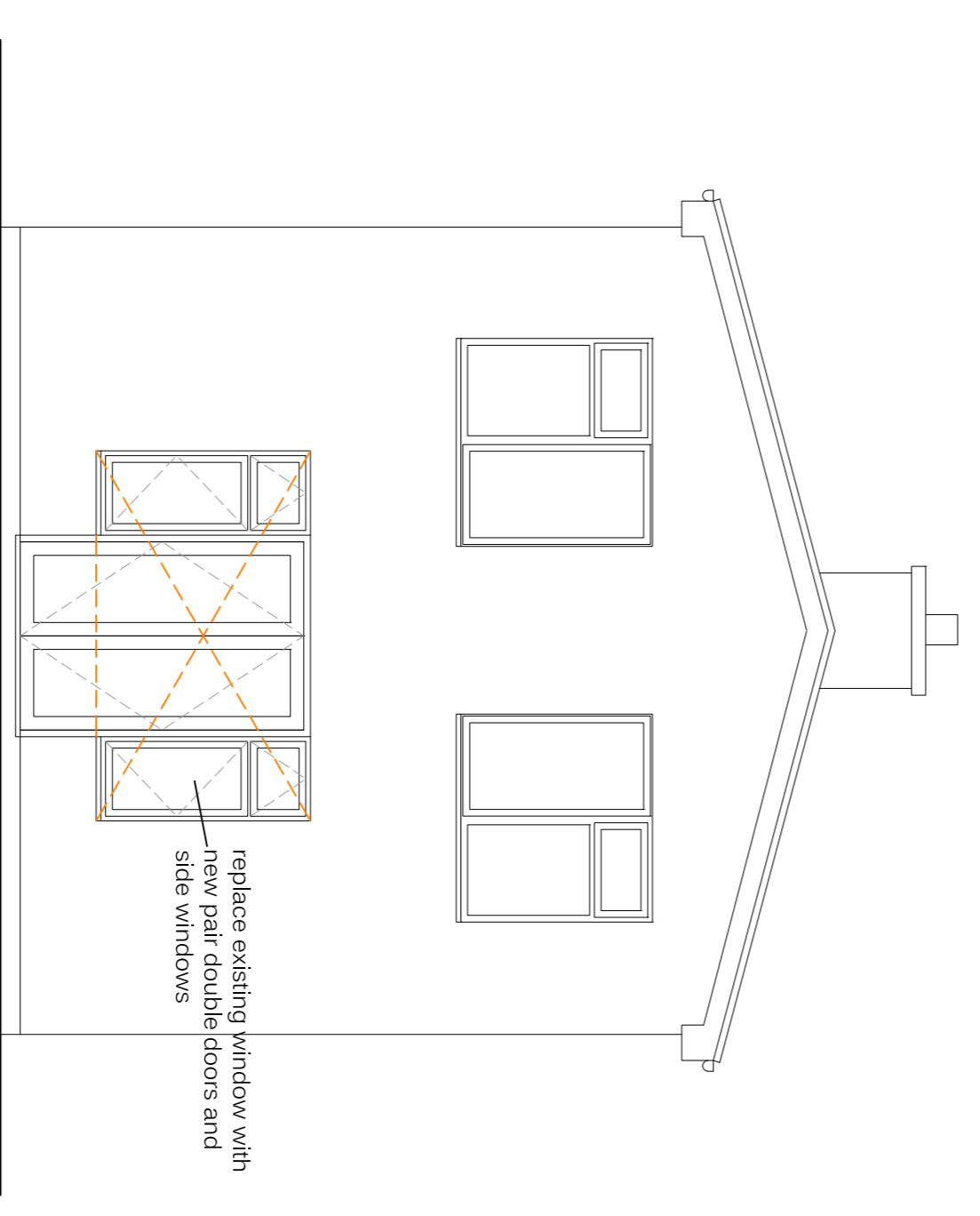
first floor plan

SYMBOLS LEGEND

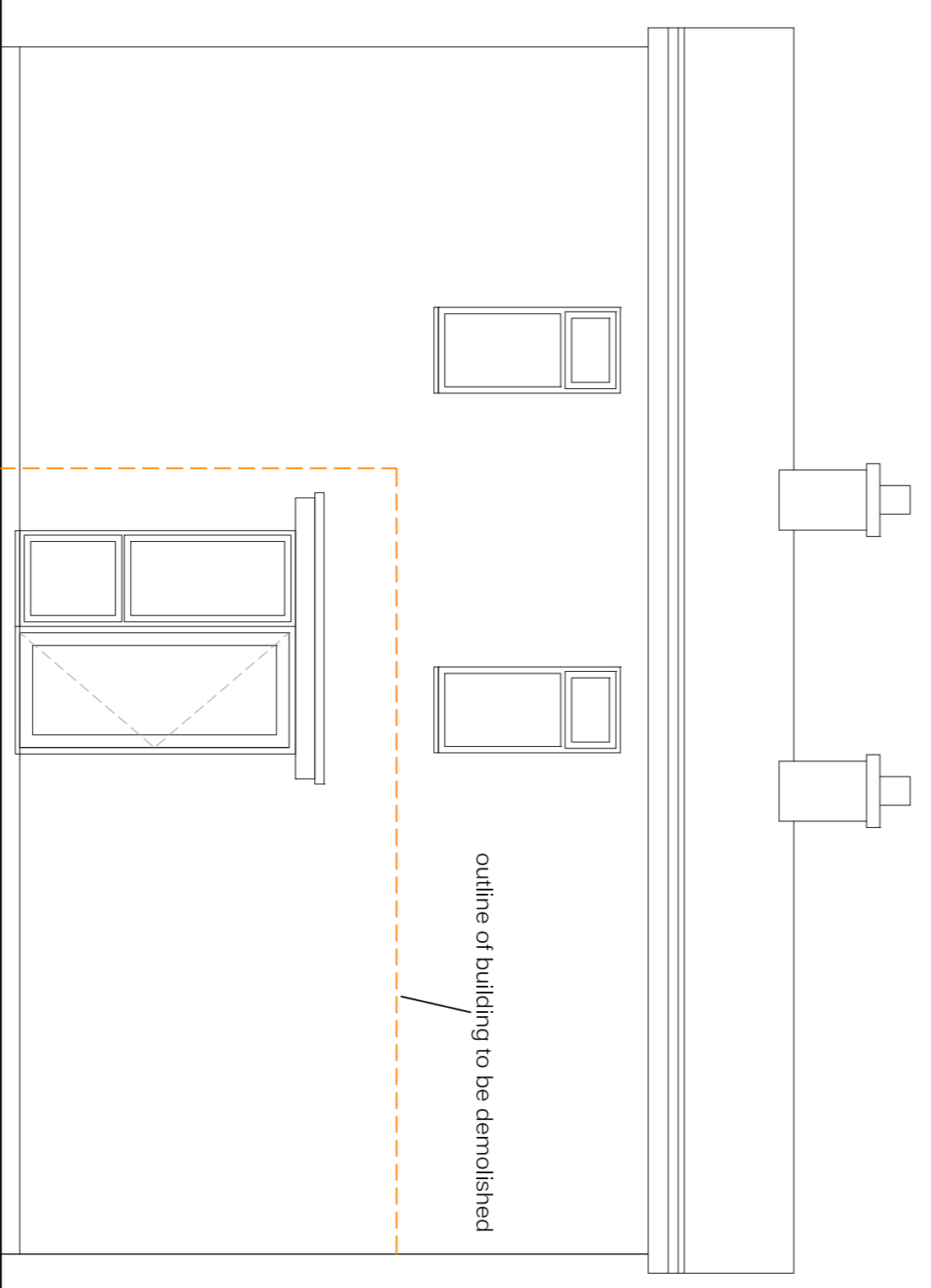
● One way light switch 1.2m above FFL	⌊ Towel Rail
● One Way pull switch with isolator to extract outside room	⌋ Intruder alarm
● Emergency pull-switch	⌌ telephone/fax/data point
● 2 light switch (2-way) 1.2m above FFL	⌍ T.V aerial
Ⓛ Low-energy Luminaire to comply with AD L1	⌎ Cooker Hood
Ⓜ Low-energy wall mounted bulkhead fitting	⌏ Extract fan with switched fused spur
Ⓨ Low-energy PIR photocell sensor	⌐ Consumer Unit
Ⓩ Low-energy recessed Light Fitting	⌑ Door bell
ⓐ 13 amp twin socket outlet, 300mm above kitchen worktop, 450mm above FFL elsewhere	⌒ Door bell push, 1.2m above FFL
ⓑ 13 amp single socket outlet, 300mm above kitchen worktop, 300mm above worktop	⌓ Smoke detector at high level
ⓓ cooker point, 300mm above worktop	⌔ Shaver Point



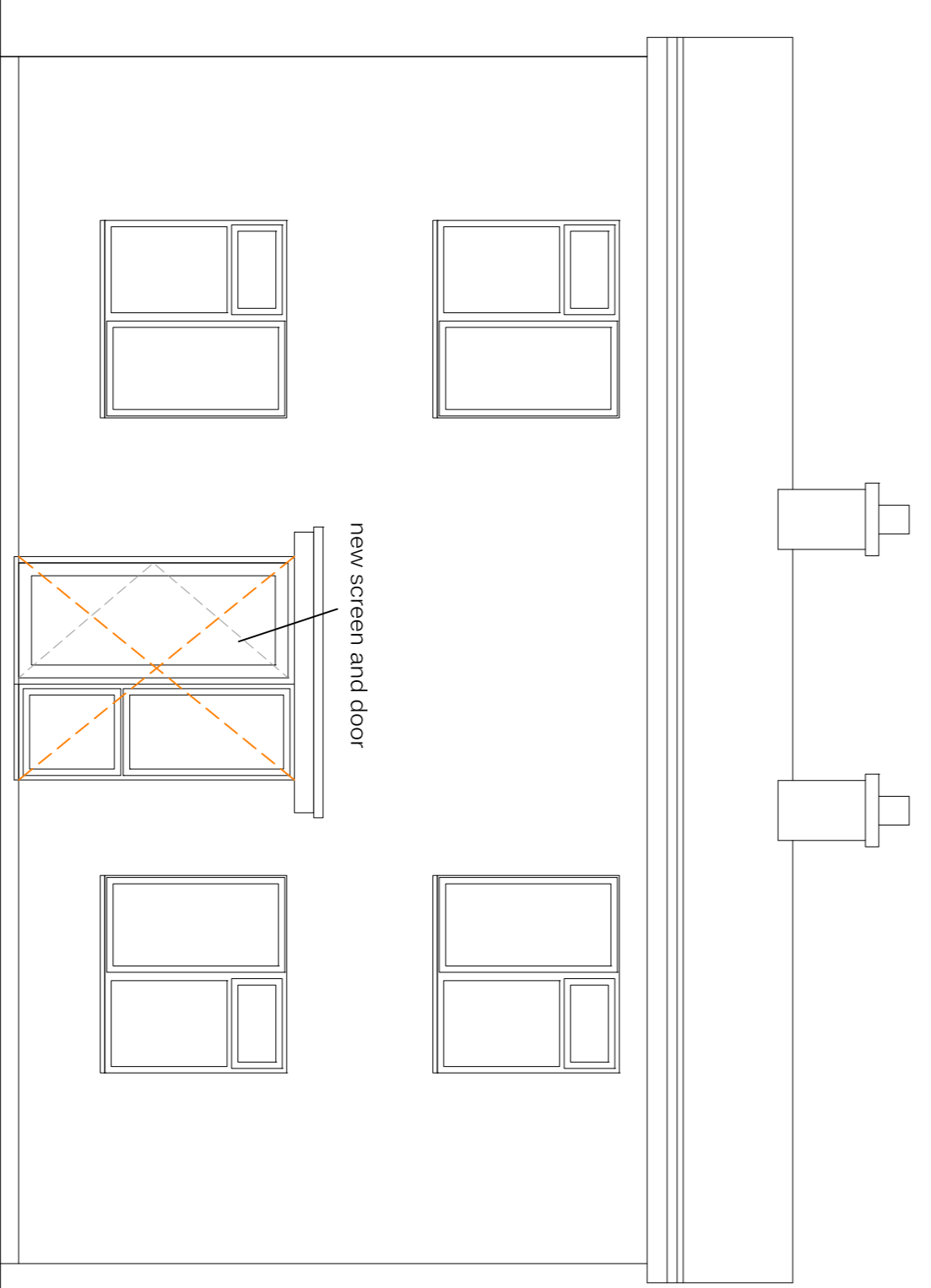
03. east elevation



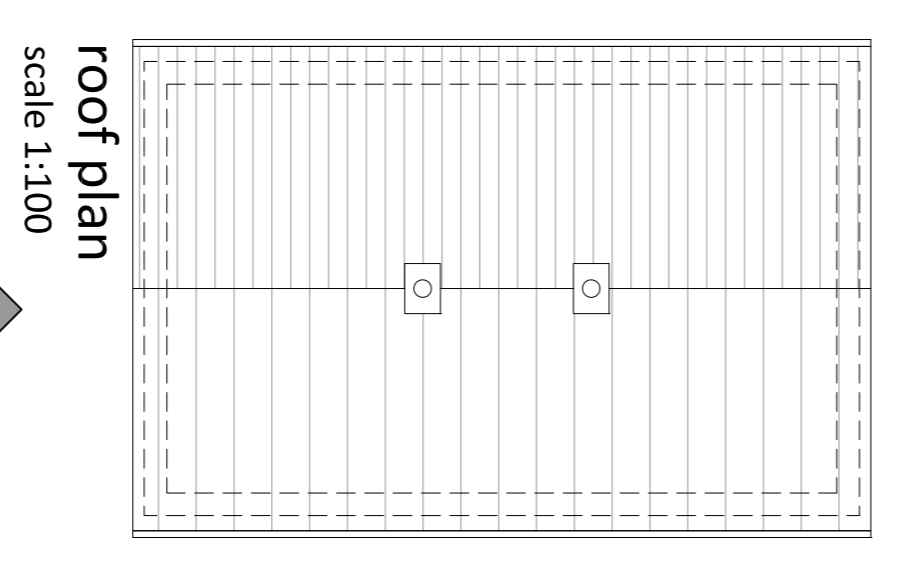
01. west elevation



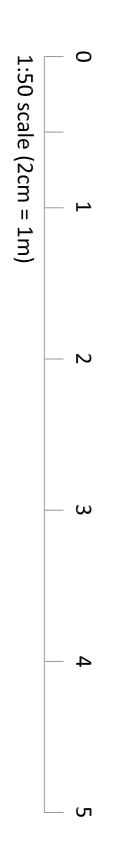
01. north elevation



04. south elevation



roof plan scale 1:100



1:50 scale (dim = mm)

DRAWING: GA floor plans and elevations to former warden's house

PROJECT: new apartments and associated refurbishment works

LOCATION: High Mount, Dunnington, Telford BR-014a

SCALE: 1:50 @ A1
DRAWN: dec 2013