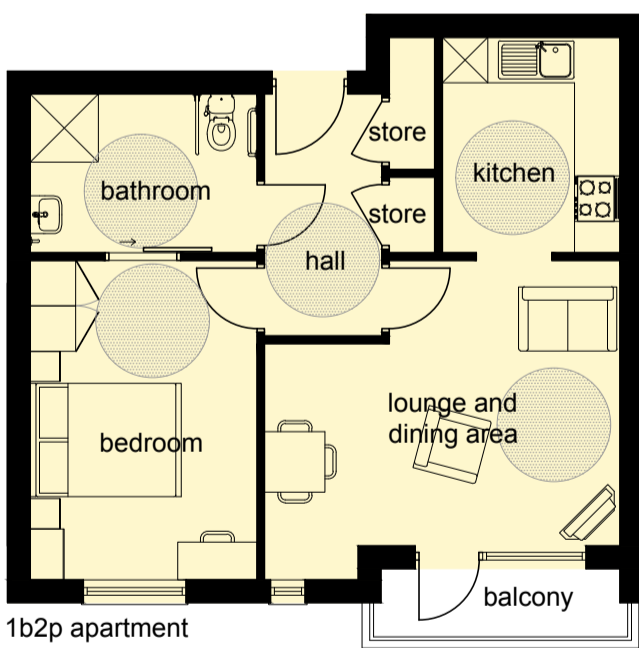


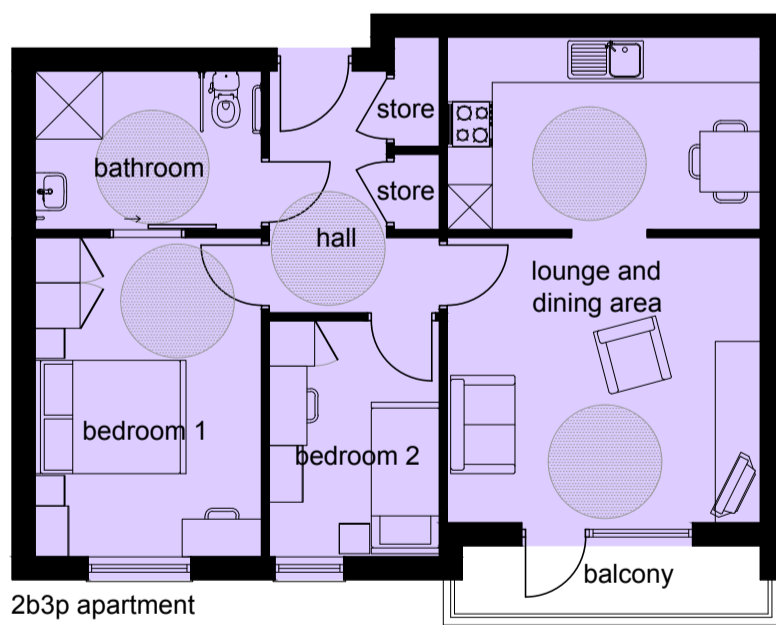


First floor plan
scale 1:200



1b2p apartment
50.8m²/547ft²

Apartment plans
scale 1:100



2b3p apartment
61.9m²/667ft²

Site area	4,751m ² /1.17 acres
1b2p apartment	26
50.8m ² /547ft ²	
2b3p apartment	16
61.9m ² /667ft ²	
Total	42

- Communal uses
- Staff uses
- Ancillary uses

B Communal areas amended in line with client comments 25/11/13
 A Kitchen windows and Part M showers removed from flats 08/11/13
 Planning submission 28/04/13

The copyright of this drawing is held by Eden Building Design, and no reproduction is allowed without prior permission.

project
Proposed Residential Scheme
at South End, Wigton
for Mulbury Homes
title
Proposed First Floor Plan

status
Planning
scale
as shown at A2
drawing no.
12-49-F12-A

date
29/04/13
drawn by
CJB
checked by
APS



Eden Building Design
Great Oak Farm
Mag Lane
Lymm
Cheshire
WA13 0TF
Tel: 01925 748531
Email: info@edenbuildingdesign.co.uk
Web: www.edenbuildingdesign.co.uk