

**Notes**

Jennings Design Associates take no responsibility for any dimensions obtained by scaling from this drawing. If no dimension is shown the user should refer to the drawing for the correct dimension. Dimensions or by site measurement. Supplying the drawing in digital form is solely for convenience and no reliance may be placed on digital data. All data must be checked against read copy. Dimensions must be checked against read copy. Dimensions must be checked against read copy. Dimensions must be checked against read copy. Architect Immediately. The drawing is copyright of Jennings Design Associates.

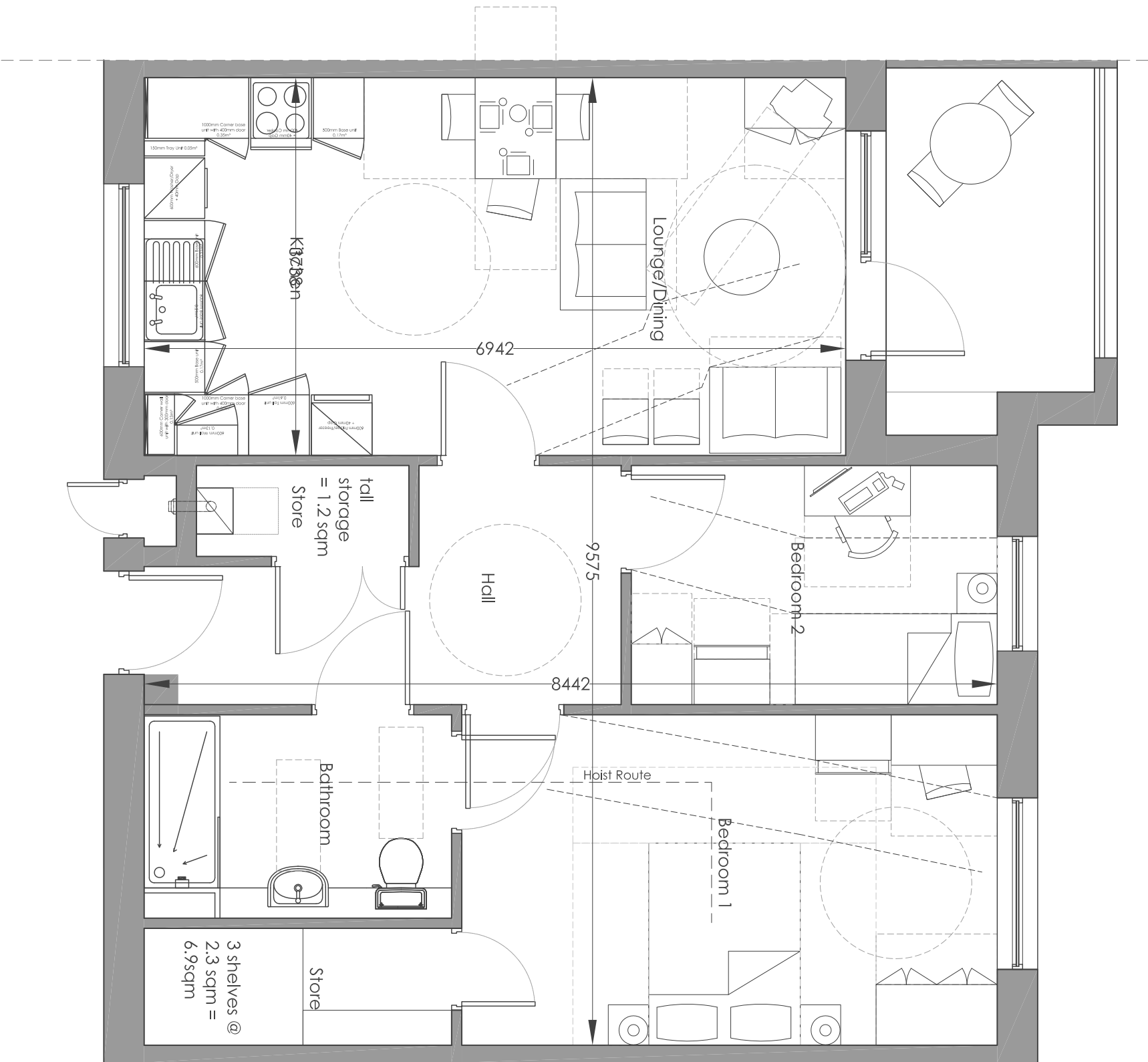
Unit	Capacity
1000mm Sink top and drainer	
640mm Cooker	
640mm Washer/Dryer	
600mm Base Unit	0.21m³
600mm Base Unit	0.21m³
500mm Base Unit	0.17m³
1000mm Corner Base Unit	0.35m³
1000mm Corner Base Unit	0.35m³
600mm Corner Wall Unit	0.13m³
600mm Wall Unit	0.13m³
640mm Fridge/Freezer	0.61m³
600mm Broom Tall Unit	0.05m³
500mm Tray Space	0.17m³
500mm Recycle Bins Space	0.17m³
Total length of fitment Req	4930mm
Total length of fitment	6580mm
Total Volume Required	1.5m³
Total Volume Achieved	2.39m³

All cubic capacities to be calculated by kitchen manufacturer to confirm compliance prior to ordering

Type of space	HQI checklist	
Living Room	Furniture	✓
	Armchair	✓
	2 seat settee	✓
	TV	✓
	Coffee table	✓
Kitchen/Dining	Occasional table	✓
	Storage unit	✓
	Space for visitors chair	✓
	Desk & chair (extra)	✓
	Focal fire point (extra)	✓
Double bedroom	Activity Zone	✓
	Radiator	✓
	Dining chairs	✓
	Dining table	✓
	Sideboard	✓
Single bedroom	Radiator	✓
	Dining activity Zones	✓
	Kitchen activity Zone	✓
	Double bed	✓
	Bedside table	✓
Bathroom	Chest of drawers	✓
	Table and Stool	✓
	Double wardrobe	✓
	Cot space	✓
	Radiator	✓
Kitchen/Dining	Dressing area	✓
	Bedmaking area	✓
	Single bed	✓
	Bedside table	✓
	Chest of drawers	✓
Bathroom	Table and Stool	✓
	Single wardrobe	✓
	Dressing Zone	✓
	Bedmaking Zone	✓
	Radiator	✓
Kitchen/Dining	WC & cistern 500x700 min	✓
	Wash-hand basin 600x400	✓
	Bath	✓
	Shower over Bath (opt)	✓
	Shower	✓
Kitchen/Dining	Radiator	✓
	Using a wc zone	✓

Criterion	Area or Feature	
1	Parking	✓
2	Approach from parking	✓
3	Approach to entrance	✓
4	Entrances	✓
5	Communal Stairs and Lifts	✓
6	Internal doorways and hallways	✓
7	Circulation space	✓
8	Entrance level living	✓
9	Entrance level bedspace	✓
10	Entrance level wc and future shower	✓
11	WC and bathroom walls	✓
12	Future stair lift and through the floor lift	N/A
13	Future hoist	✓
14	Bathrooms	✓
15	Glazing/window handle	✓
16	Location of service control	✓

Storage	General	6.90sqm
	3 shelves @ 2.3	
	Provided	6.90sqm
	Required	2.25sqm
	Tall storage	0.36sqm
	600x400 broom	1.2 sqm
	Tall storage extra	1.56sqm
	Required	0.50 sqm



Rev	Description	Date	By
B	Additional dimensions added	11/12/14	KOR
A	Added HQI and the Information	09/11/14	NS

Jennings Design Associates Architects			
C	Concept	G	Tender
D	Planning	J	Construction
E	Building Regs	L	As Built
F	Production	SK	Sketch

**Architects Designers Project Managers**  
**The Warehouse, Saxon Street, Denton, Manchester M34 3DS**  
 T: 0161 334 5011 F: 0161 320 0512 E: jda@jda-architects.com

**Client:**  
 St Vincents Housing Association

**Drawn by:**  
 Ekr Lane, Billington

**Scale:**  
 1:50

**Date:**  
 29/08/14

**Drawn by:**  
 NS

**Checked by:**  
 KOR

Job Number	Description	Rev
805	A 013	B
	2B3P Apartment Type 3	

