



Housing LIN

Connecting people, ideas and resources

CollaborAGE



Margaret Edwards

London Housing LIN Chair

[@HousingLINews](https://twitter.com/HousingLINews)

[#CollaborAGE](https://twitter.com/CollaborAGE)



CollaborAGE :
A sense of belonging

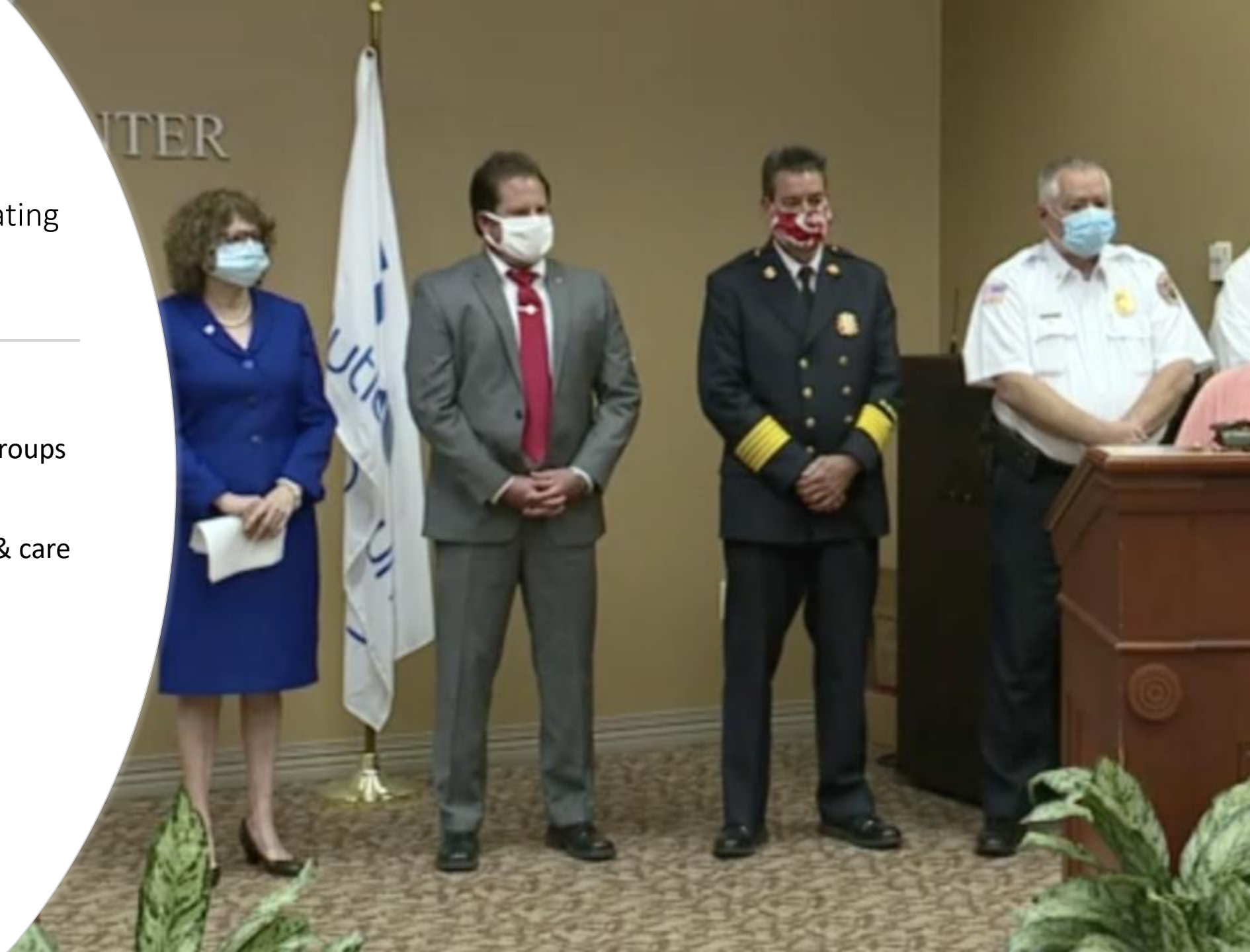
- Friendship/Connection
- Making a 'home'
- Contributing to community



Health & Wellbeing

Who is responsible for creating a sense of belonging?

- Planners/Architects
- Voluntary and community groups
- Commissioners
- Providers - housing, health & care
- Central and local govt
- Developers/builders





Pandemic – ↑ citizen
engagement/action

- Mutuality – all in it together
- Equality – inequality magnified
- Urgency - people at risk
- Unusual times – rules are relaxed, citizens do what they think needs doing
- Govt can't do everything and draws on wider resources in communities

Mutuality

Housing Cooperatives

'We should have a Breedon Gardens in every community up and down the country, enabling older people to run things themselves, take charge of their lives and provide mutual support in a thriving, active and engaging way.'

Dr Chris Handy OBE LLM, CEO
Accord Group

Co-Housing

'If cohousing is to be developed alongside older age care delivery, as informal care to keep people in a supportive home community for longer, then we need to put into place the systems that will help people develop them.'

Allan Shepherd, Community
Housing Officer, Mid and North
Wales

Home sharing

"It's been great – got me a bit out of my shell, and you know that if you have a problem then there's someone there to back you and help you. They're not there to gain anything – they're there to help you." Householder,
PossAbilities

Equality & Inclusion

Making universal services/systems Inclusive

"I am happy myself because I am independent. I do my own things, I have friends but I don't depend on them. I'm a proud black woman – that is one thing I know."

Linda, older black woman and community activist

"It helped me talk about things that I hadn't spoken to people living here before. I opened up more" Jean – a resident involved in Standing Together Cymru – a project promoting mental health in later life housing.

Services created by and for specific groups

"We have a cup of tea and a chat in the break, that is what makes Men's Sheds so great" "It saved my life"

'At the age of 89, my memory is seriously affected and I'm terrible with names, I tell people that I am the luckiest 'old gay man' of my age: I'm in a wonderful long-term relationship with my partner who is many years younger than me. I've told him if he wants to put me into a home it's got to be one that has a lot of other old gay men in it.'



**ACT
NOW!**

Urgency

building new homes,
refurbishing old homes and
strengthening communities
takes time – the sooner we
start the better

Enabling, remove barriers, support to engage

'Community Led Housing can provide a way for local people to achieve their aspirations for an area. It fosters accountability and ownership and, in turn, helps to mobilise support for development. People who come together to decide what housing goes where and acquire a role in the ownership, stewardship or management of the homes, develop a strong sense of community.'

Cllr Tony Newman Leader of Croydon Council
Chair of the CCIN Housing Commission.

Rules of engagement/legal frameworks

- Community Land Trusts
- Tenant Management Organisations
- Platform co-ops

People as enablers and connectors

Community Hubs

Since I lost my wife, the hub has enabled me to talk to people again'

Hub service user,
Gloucestershire

Local Area Coordination

"Working with my Local Area Coordinator has not only made me want to live, it has for the first time in years, made me start to see there is a future. It has helped me come from feeling that I am completely useless, to realising that I do have qualities and I do deserve a life" Citizen of Swansea

Rural Housing Enablers

"I want to grow older where I am. Living in a village is lovely. There is togetherness which I wouldn't find so easily in a town whereas in a village I am not lonely at all. It's idyllic, it's peaceful, and it's wonderful."

Mrs June Rowberry,
retired Rooftop Housing
Group resident



Housing LIN

Connecting people, ideas and resources

Access the CollaborAGE Directory at: www.housinglin.org.uk/CollaborAGE/

Housing Learning and Improvement Network

c/o PRP, The Ideas Store
10 Lindsey Street, Clerkenwell
London EC1A 9HP, UK

Email: info@housinglin.org.uk

Website: www.housinglin.org.uk

Twitter: @HousingLIN @HousingLINews @HLINconsult



CollaborAGE Directory

The Housing LIN has long championed a variety of community-led approaches to housing for an ageing population. In line with this, we have published a range of [useful materials to raise awareness and showcase latest practice](#).

The Covid-19 pandemic has highlighted the value of existing community connections in enabling rapid responses to local needs. The impact of the pandemic on every community has led to new partnerships and a realisation that there are enormous reserves of skill, good will and energy available when people feel motivated by common interests.

This online Directory seeks to enhance understanding and inspire local groups to co-produce innovative approaches to determine what might work in their community.

It specifically builds on the Housing LIN's concept of [CollaborAGE](#).

"With housing one of the fundamentals of life at any age, a CollaborAGE manifesto would surely begin with central and local government, house-builders and others working with older people to provide homes they want to live in. Homes that are situated within thriving, inter-generational communities."

Jeremy Porteus, Housing LIN

- What does 'CollaborAGE' mean for...? ▾
- Essentials in successful collaborative approaches ▾
- Getting inspiration – how to search the Directory ▾

Nine elements for collaborative success

In producing this Directory, we have identified nine elements that are important for collaborative success.

1. [Making the connection with health and wellbeing](#)
2. [Engagement of current/potential residents from outset](#)
3. [Political support](#)
4. [Community Chest - Developing Physical and Social Assets](#)
5. [Shared interests and goals](#)
6. [Engagement of wider community](#)
7. [People as connectors](#)
8. [A proactive approach to increasing diversity, equality and inclusion](#)
9. [Rules of engagement and governance](#)

Acknowledgements

Written by Lois Beech, Margaret Edwards and Clare Skidmore, with additional contributions from Pete Fleischmann and edited by Jeremy Porteus. Set out by Jerome Billeter and illustrated by Julie Goodman.

[Making the connection with health and wellbeing](#) ▾

Tell us about your innovation ▾

Collaborate and share with us any additional examples of community-led approaches

Key elements

- CollaborAGE home
- Making the connection with health and wellbeing
- Engagement of current/potential residents from outset
- Political support
- Community Chest - Developing Physical and Social Assets
- Shared interests and goals
- Engagement of wider community
- People as connectors
- A proactive approach to increasing diversity, equality and inclusion
- Rules of engagement and governance