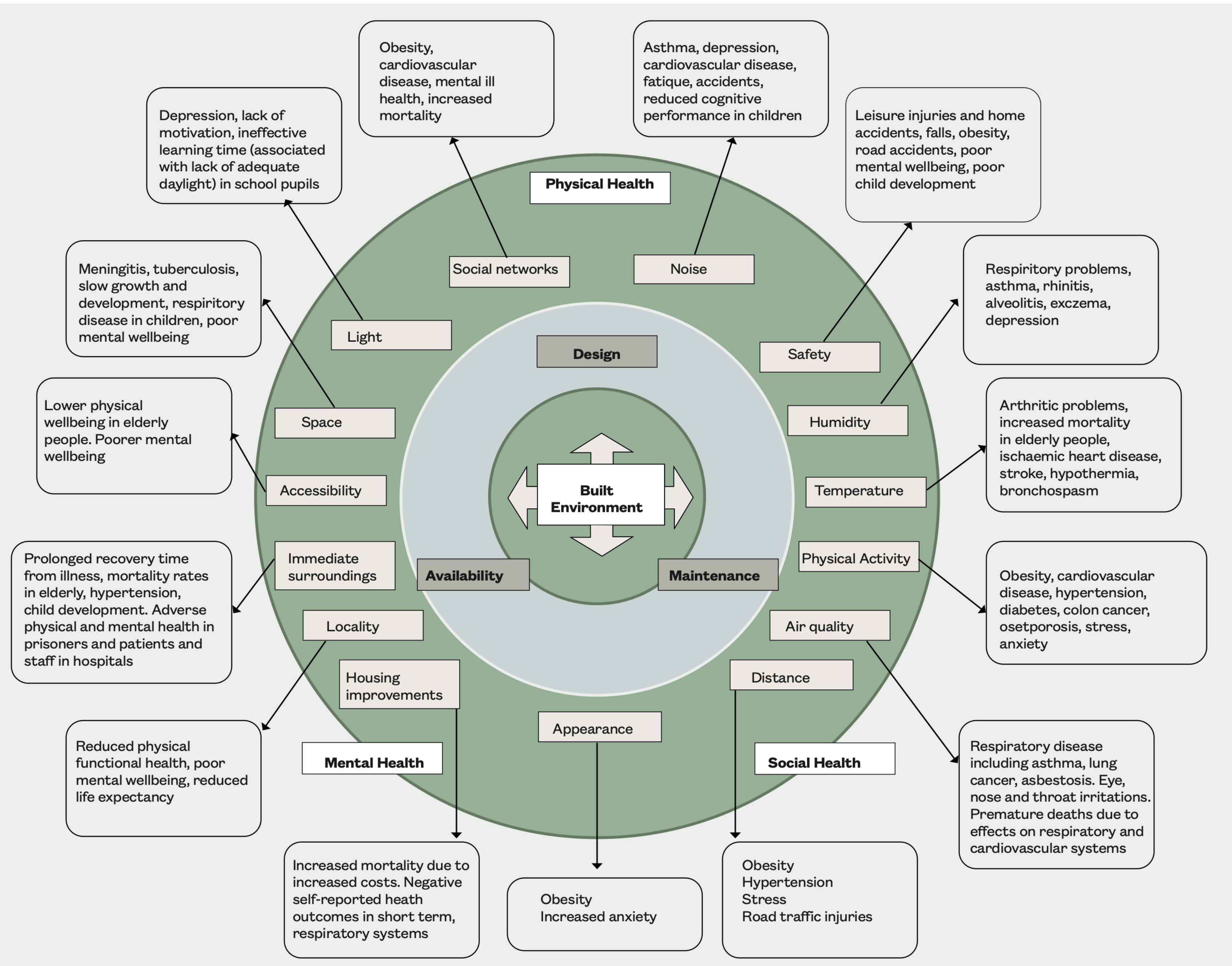


Creating Vibrant Later Living Homes and Communities

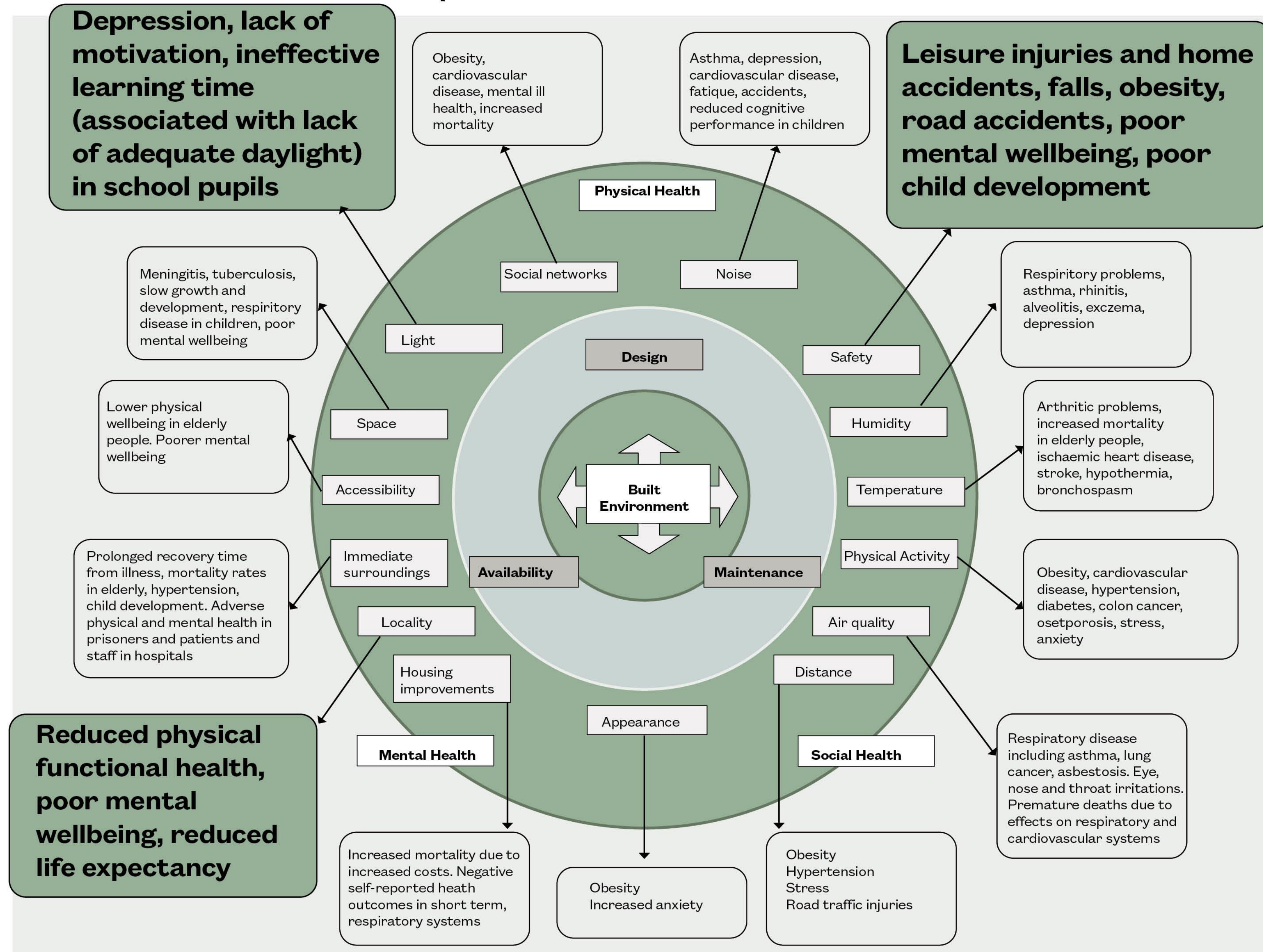
Alex Ely, Mæ



The impacts of the built environment on health



The impacts of the built environment on health



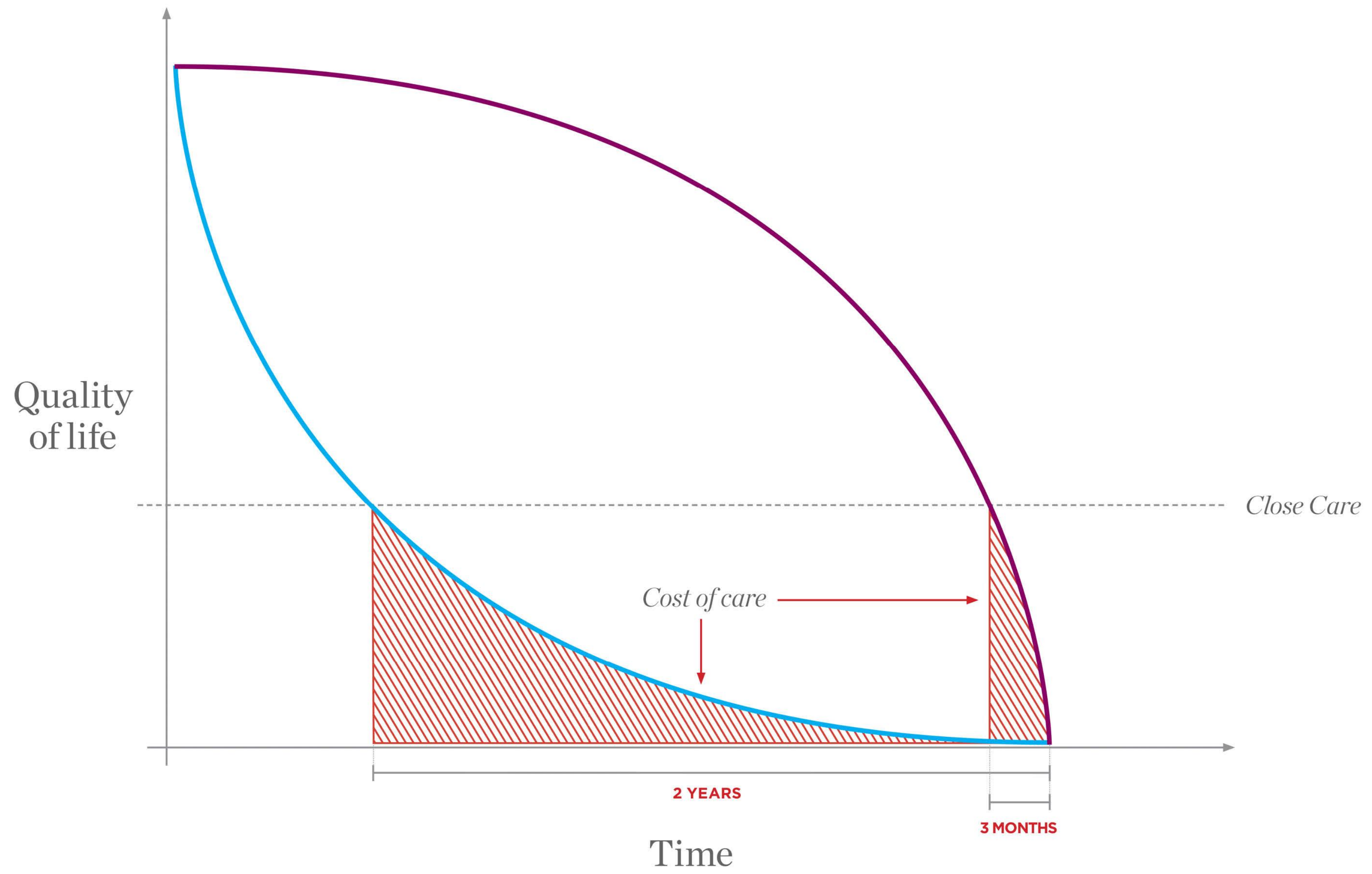
Social Space

Why this is important

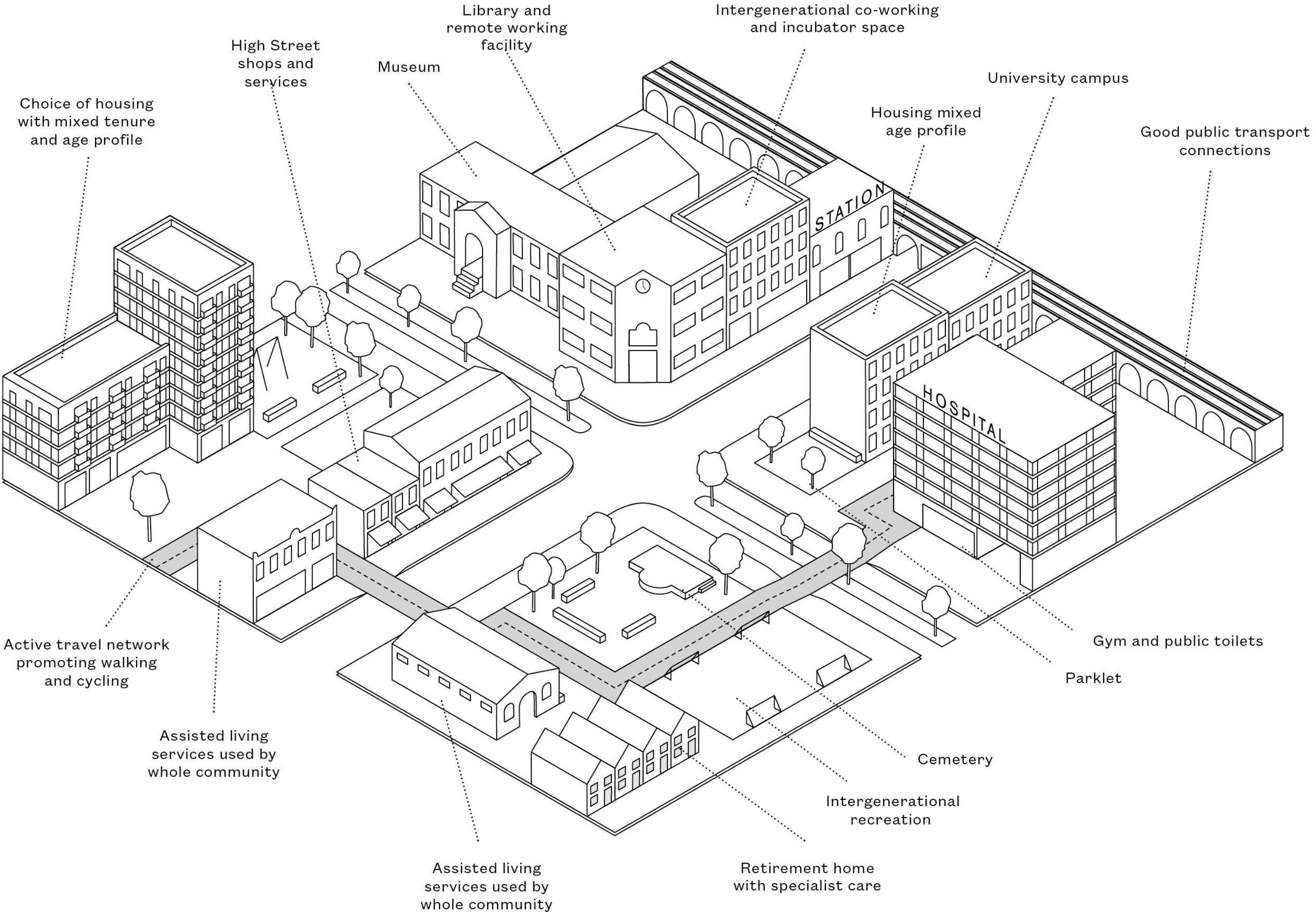
Compelling evidence from a meta-analysis of 148 studies on social relationships and mortality risk shows that **communities 'with strong social relationships are likely to remain alive longer than similar individuals with poor social relations'**

* Public Health England - A guide to community-centred approaches for health and wellbeing





We need new models of retirement housing



Lisson arches, Westminster: Supported housing, business enterprise and health hub



Aylesbury, Southwark: Extra care, multi-generational housing mixed-use



The Chimes, Westminster: High-value luxury later living



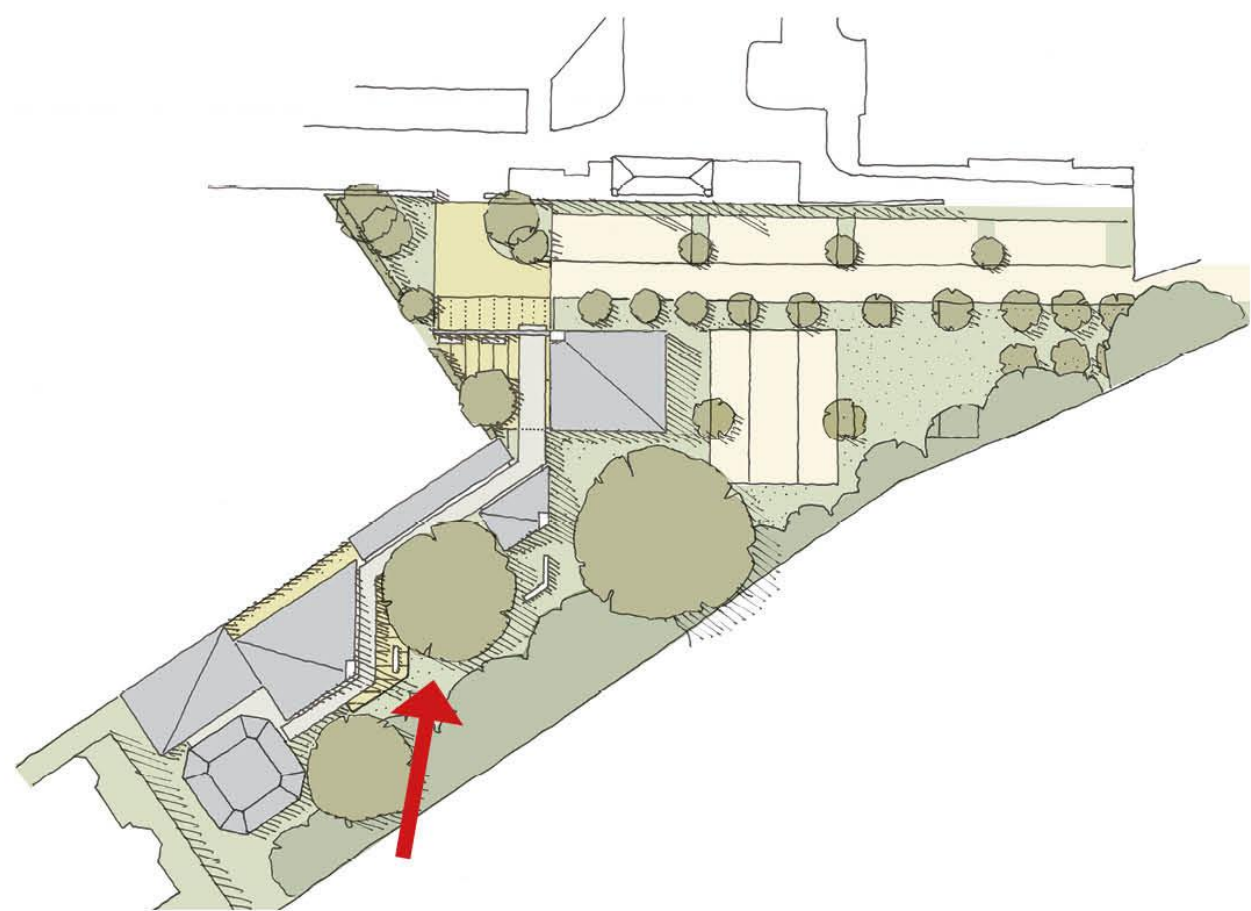



John
Warden
Centre





























Thank you

www.mae.co.uk

@MaeArchitects

