



Designing healthy, inclusive neighbourhoods for all ages

Nigel Saunders

Housing LIN Summit 2021

Healthy Neighbourhoods.

Village 135, Manchester.

pozzoni



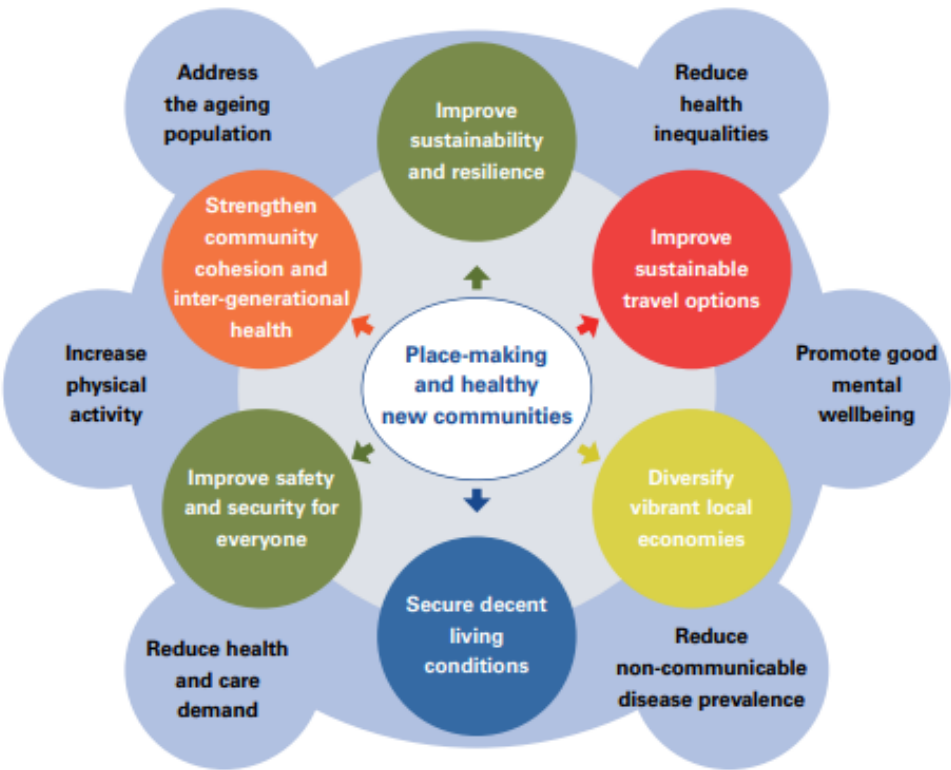
Healthy Neighbourhoods.



Mainway, Lancaster.

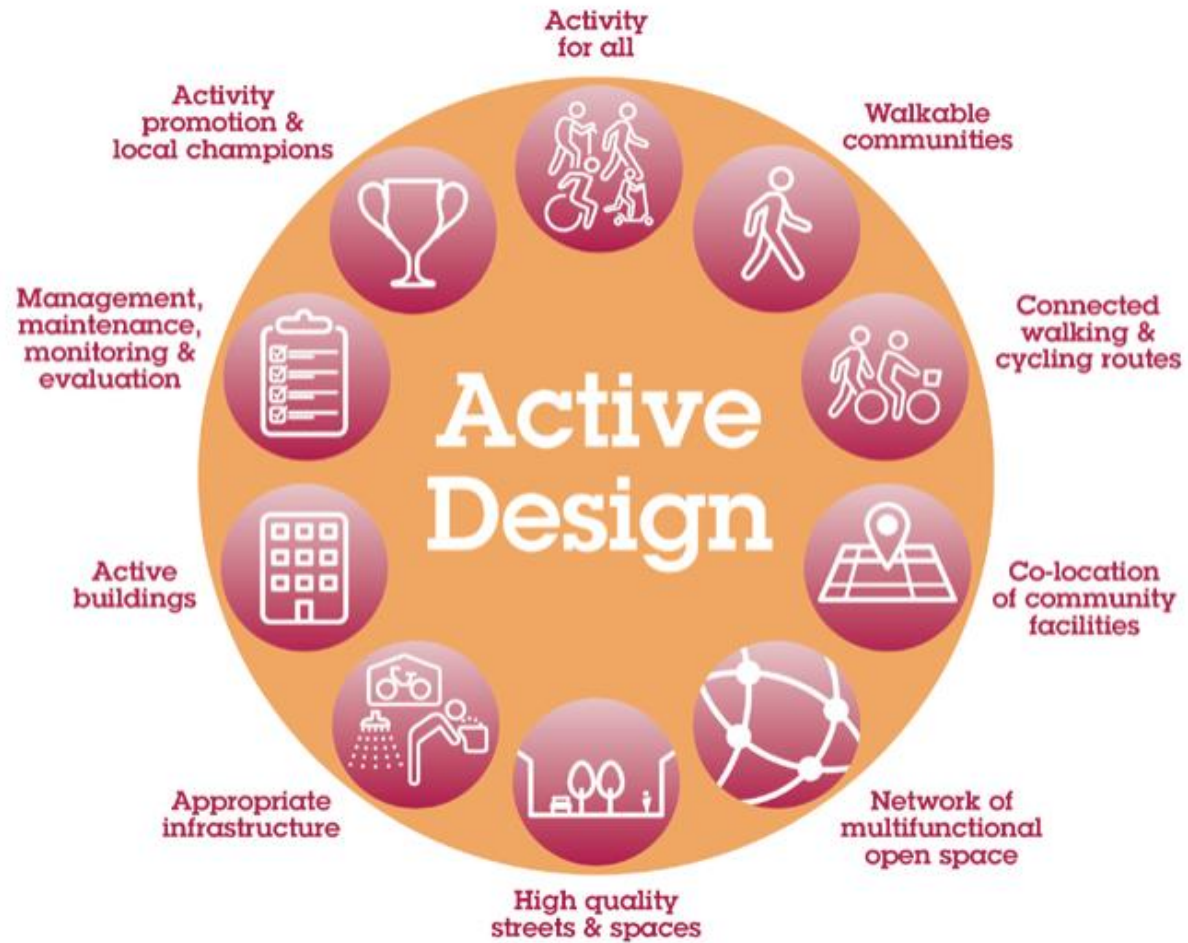
pozzoni

Healthy Neighbourhoods.



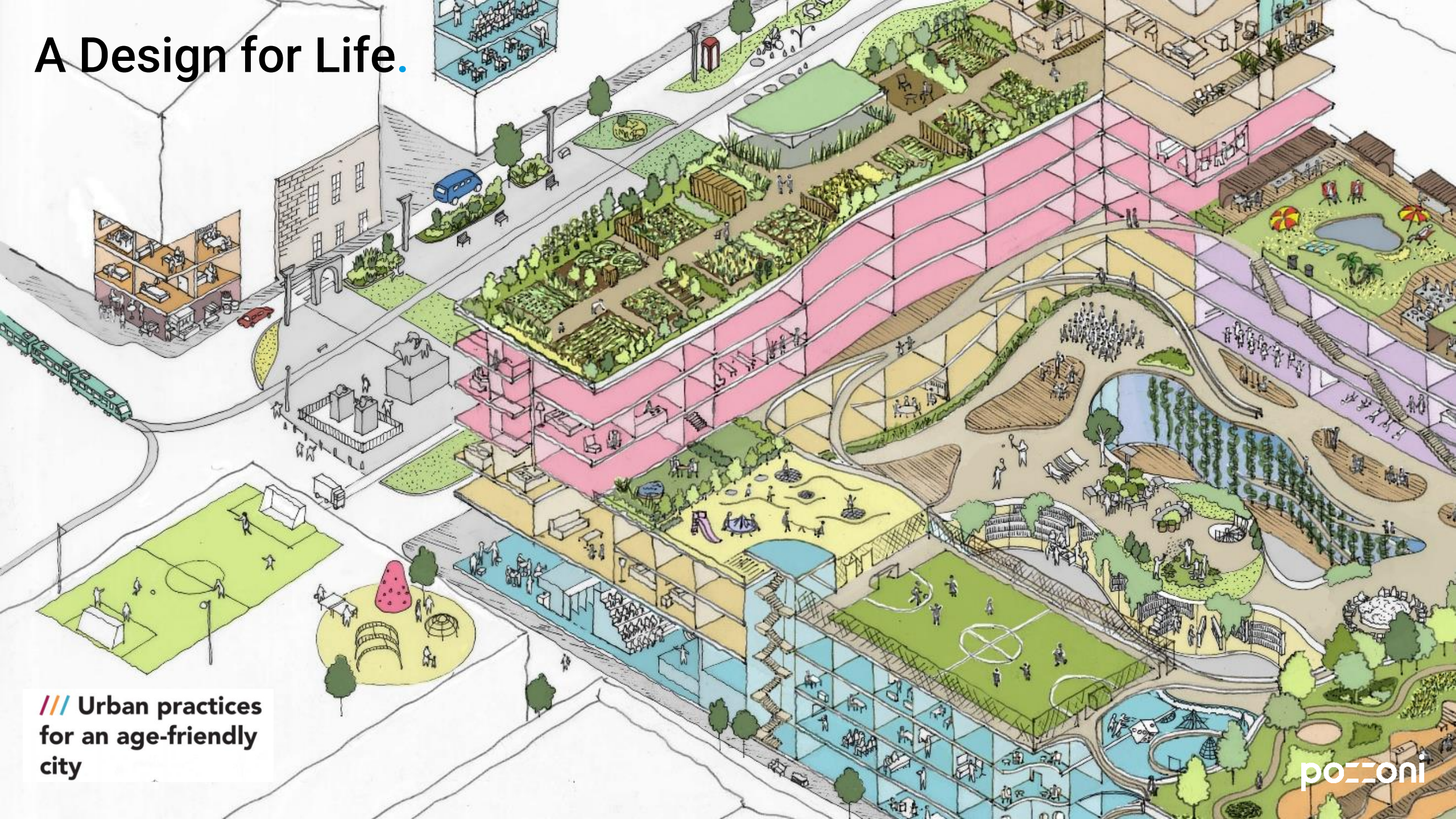
Guidance and Tools.

Healthy Neighbourhoods.



Guidance and Tools.

A Design for Life.



/// Urban practices
for an age-friendly
city

pozzoni

Case Study.

Creating a Healthy Neighbourhood

North Manchester General Hospital



Ambition - to create a **sustainable, world-class, healthy neighbourhood** for all ages:

- place-based **community asset**
- **catalyst** for regeneration
- **life chances of local people**
- **integrate local services**
- **stronger and safer community**
- **social value – maximise the impact**



NMGH : creating a healthy neighbourhood.

pozzoni

An aerial photograph of a city area, likely Glasgow, showing a mix of residential, commercial, and green spaces. A large, irregularly shaped area in the center is highlighted in yellow with a dashed green border and labeled 'VILLAGE GREEN'. Surrounding this central area are several other labeled locations: 'CRUMPSALL PARK' in the top left, 'NEIGHBOURHOOD AREA' in the top center, 'PROPOSED MENTAL HEALTH HOSPITAL' in the middle left, 'COMMERCIAL AREA' in the bottom center, and 'PROPOSED NEW ACUTE HOSPITAL' in the middle right. The image is a grayscale aerial view with color overlays for the labels and the central green area.

CRUMPSALL PARK

NEIGHBOURHOOD AREA

PROPOSED MENTAL
HEALTH HOSPITAL

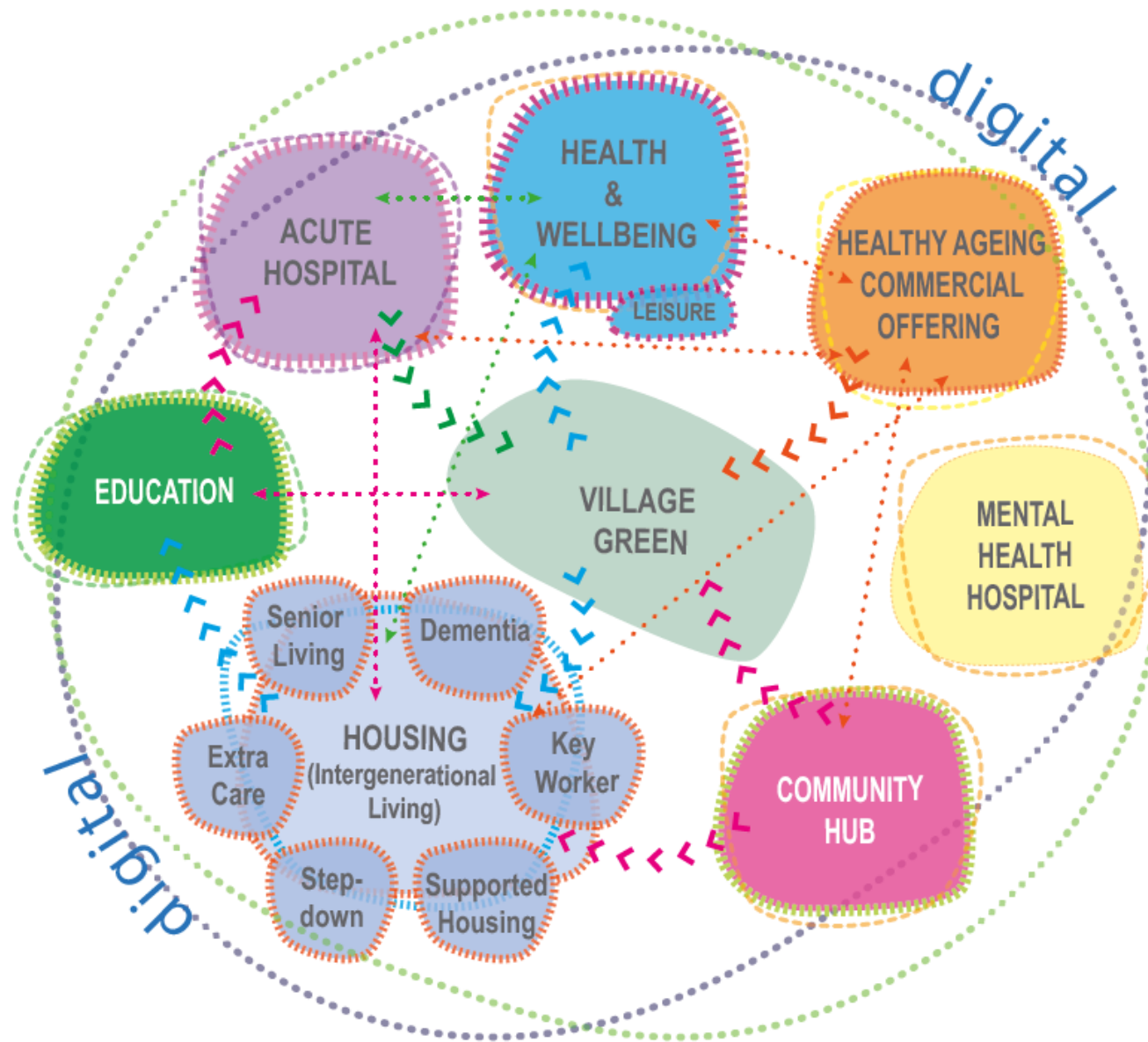
VILLAGE GREEN

PROPOSED NEW
ACUTE HOSPITAL

COMMERCIAL AREA

NMGH : creating a healthy neighbourhood.

pozzoni



NMGH : creating a healthy neighbourhood.

- Woodland
- Shared Amenity
- Private Amenity
- Public spaces/parks



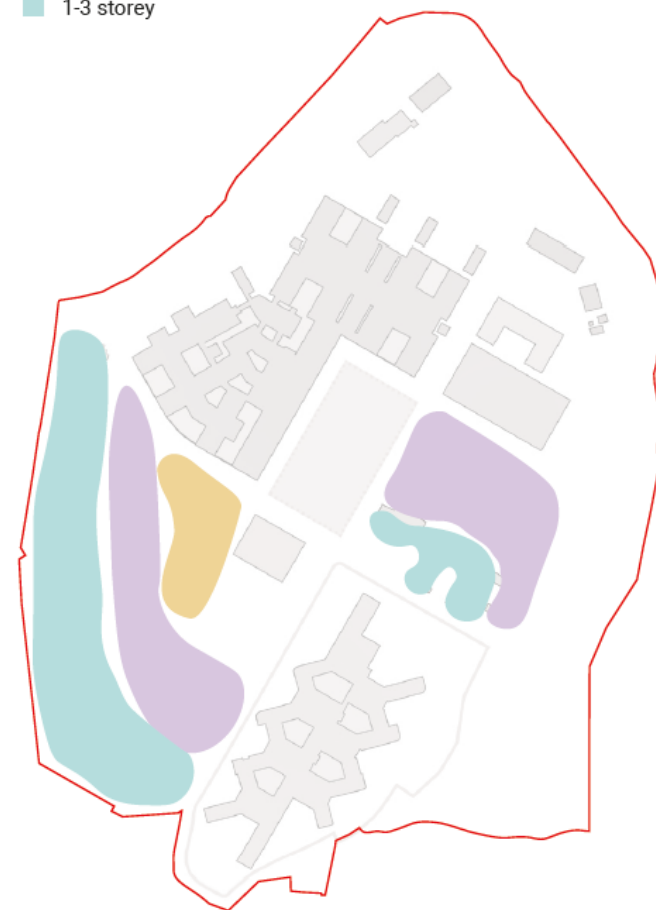
1. Public and Private Amenity Space

- Vehicle route
- Bus route
- Pedestrian route
- Key frontages



2. Routes of Movement and Key Building Frontages

- 6-7 storey
- 4-5 storey
- 1-3 storey



3. Building Heights Strategy

NMGH : creating a healthy neighbourhood.



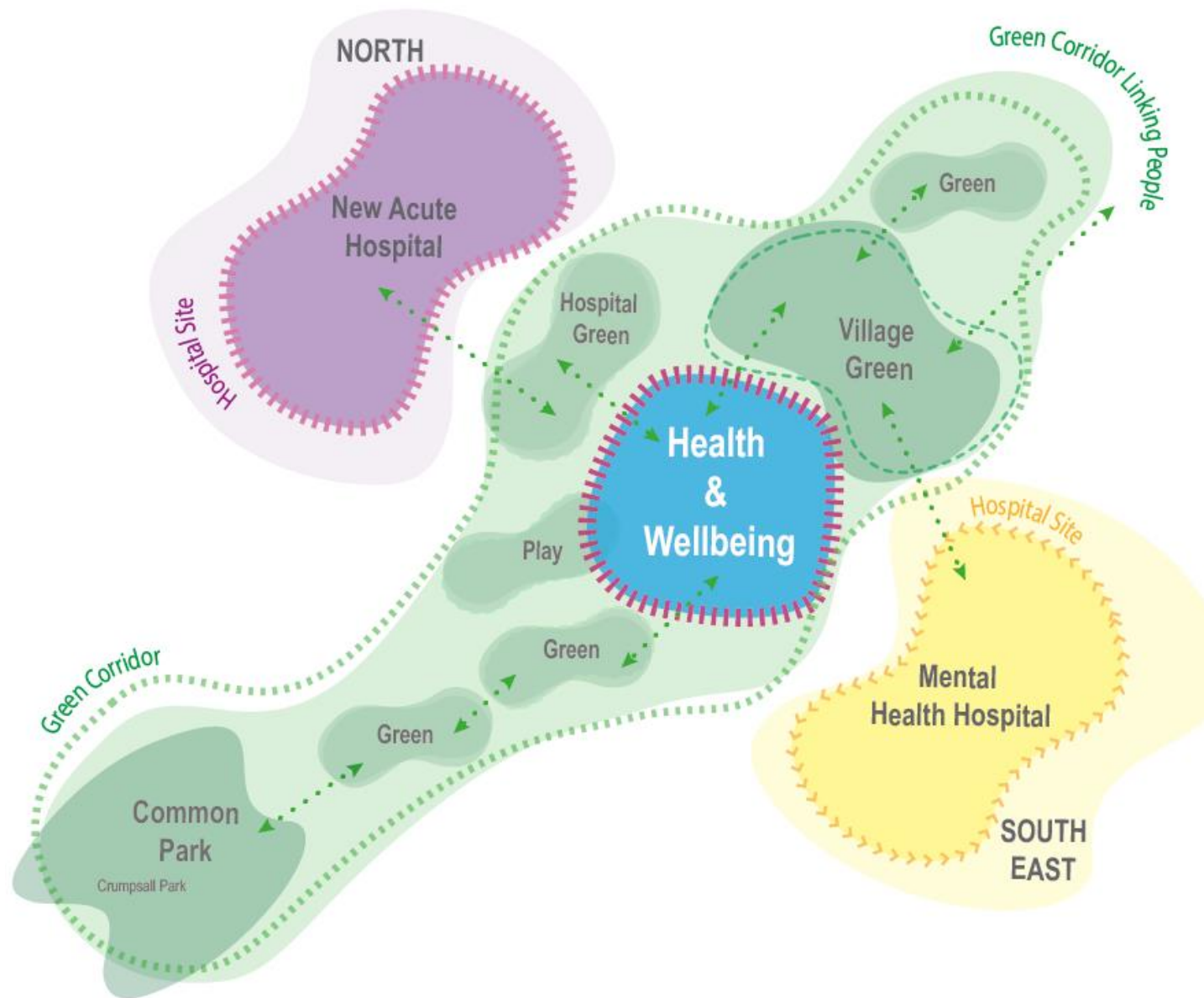
NMGH : creating a healthy neighbourhood.



NMGH : creating a healthy neighbourhood.



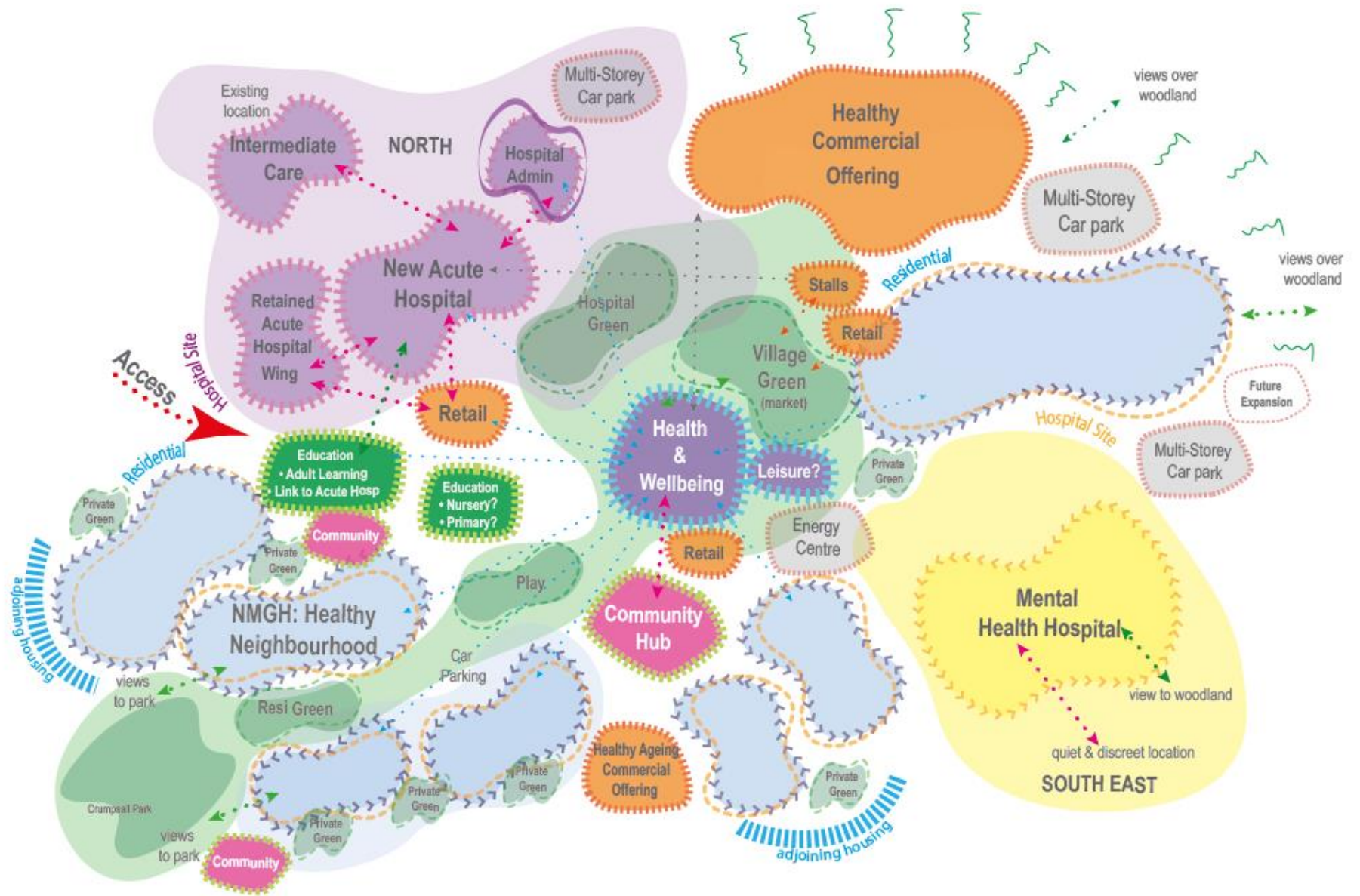
NMGH : creating a healthy neighbourhood.



NMGH : creating a healthy neighbourhood.

Key:

- Acute Hospital
- Mental Health Hospital
- Green Corridor
- Health & Well-Being Hub
- Community Hub
- Education
- Commercial
- Housing
 - Extra Care
 - Small Households
 - Step Up/Step Down
 - Co-housing* 'multi-generational'
 - Independent Living
 - Supported housing
 - Key worker housing
 - Student housing
 - 1 & 2 bed apartments
 - 3 & 4 bedroom houses



NMGH : creating a healthy neighbourhood.

pozioni

bruntwood



Manchester University
NHS Foundation Trust

NMGH : creating a healthy neighbourhood.

pozzoni

An aerial architectural rendering of a large-scale urban development. The scene features a mix of building types: modern multi-story structures with light-colored facades and flat roofs, and smaller, more traditional-looking houses with pitched roofs. The buildings are interspersed with green spaces, including lawns, trees, and a small pond. A network of paths and roads weaves through the site. The overall aesthetic is clean and modern, with a focus on integrating nature into the built environment.

bruntwood

NHS
Manchester University
NHS Foundation Trust

NMGH : creating a healthy neighbourhood.

pozzoni

Placemaking _ public space.

Westthorpe Gardens



NMGH : creating a healthy neighbourhood.

pozzoni

Placemaking _ legibility.

Hertfordshire



NMGH : creating a healthy neighbourhood.

pozzoni

Placemaking _ private space.

Belong Didsbury

NMGH : creating a healthy neighbourhood.

pozzoni

Commercial & Research.

Alderley Park

NMGH : creating a healthy neighbourhood.

pozzoni

Healthy Neighbourhood at NMGH.



Healthy Neighbourhood at NMGH



Manchester University
NHS Foundation Trust

bruntwood

GILLESPIES



gilling dod
architects

SHEPPARD ROBSON

pozzoni

Thank you.