

Housing and Living Well with Dementia

| from Policy to Practice in Greater Manchester

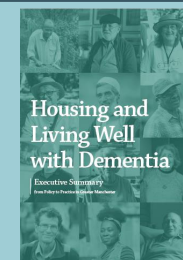
Jack Gould, Dementia United, GM Health and Social Care Partnership
Jane McDermott, Healthy Ageing Research Group, University of Manchester



2020



2021

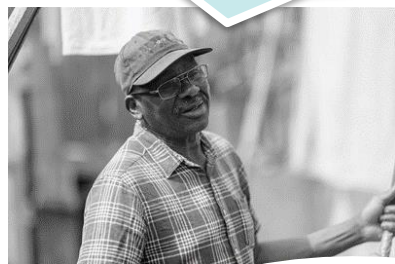


Commissioning must
be collaborative and
joined-up to ensure it
effectively shapes
the market

Build on
community
mobilisation
linking VCSE,
mutual aid and
housing support

Decommission
housing options that
constrain
independence and re-
invest in mainstream,
supported housing to
enable ageing in
place

Carers are essential
to recovery plans
and need access to
support for their
own health and
housing advice



Invest in enablers that
help people live well
and be socially
connected such as
digital devices, skills,
accessible design,
assistive technology



This report makes seven recommendations:

Housing with Care

1. **Accessible Guidance and Information:** Provide independent housing information and advice in a diverse range of accessible and culturally sensitive formats.
2. **Integrated Pathways:** Ensure housing is integral at every stage of the dementia care pathway. Ensure the support offer includes opportunities to explore housing options as well as financial and legal planning.



Planning and Development

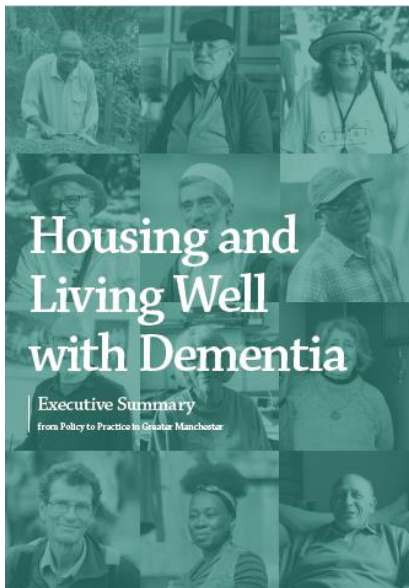


3. **Planning Ahead:** Identify clear standards for housing that meets the diverse needs of people living with dementia, including those from minority communities. Identify appropriate and acceptable sites specifically for age-friendly housing.
4. **Market-Shaping:** Recognise and respond to the growing demand for age-friendly and dementia-ready social and private rented housing, including those among ethnic minority and LGBTQ+ communities.

Building a Community of Practice



5. **Combatting Stigma:** Encourage a wider public conversation to understand how healthy homes for people living with dementia, carers and loved ones are central to ambitions for COVID-19 recovery and delivering for an ageing population.
6. **Knowledge Mobilisation and Implementation:** Establish a community of practice and learning and information networks among practitioners and those living with dementia, carers and loved ones emphasising an awareness of structural inequalities alongside an asset-based approach.
7. **Evidence-based Policy and Practice:** Further research is needed across a number of areas including how best to improve awareness and understanding of dementia, and the implications for housing and communities.



Our Implementation Plan 2022-2025

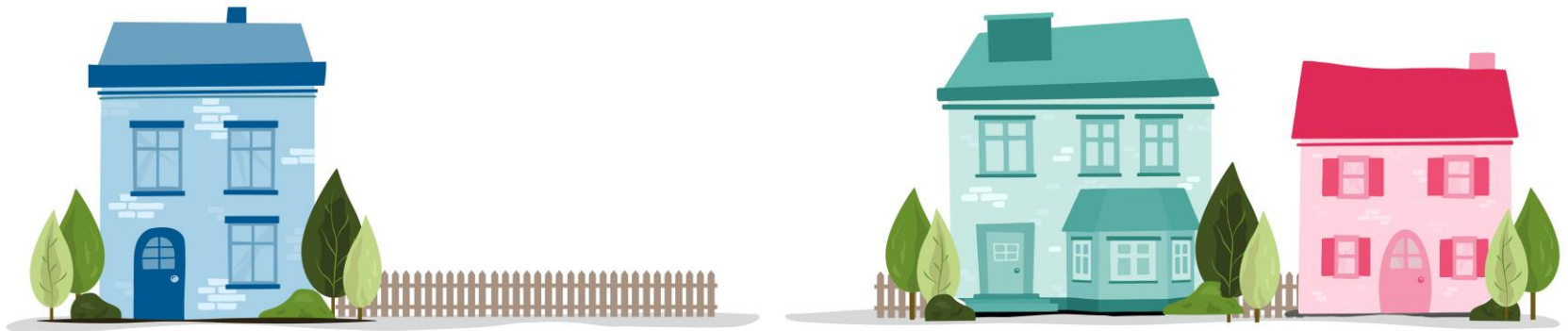
Ambitious, inclusive action that meets need and aspiration, builds social connections, and supports good health and independence

Local action plans built around 7 recommendations, mapped across to GM Framework for Creating Age-Friendly Homes



Housing and Living Well with Dementia

| from Policy to Practice in Greater Manchester



Jack Gould, Dementia United, GM Health and Social Care Partnership

Jane McDermott, Healthy Ageing Research Group, University of Manchester

For more information and to access reports visit <https://dementia-united.org.uk/housing/>