



IMPACT

Improving Adult Care Together



Economic
and Social
Research Council



The
Health
Foundation

*“Good support isn’t just about ‘services’
– it’s about having a life.”*



The future of housing with care: every decision about care is a decision about housing

Jon Glasby, Director, IMPACT
@JonGlasby

“Good support isn’t just about ‘services’ – it’s about having a life.”











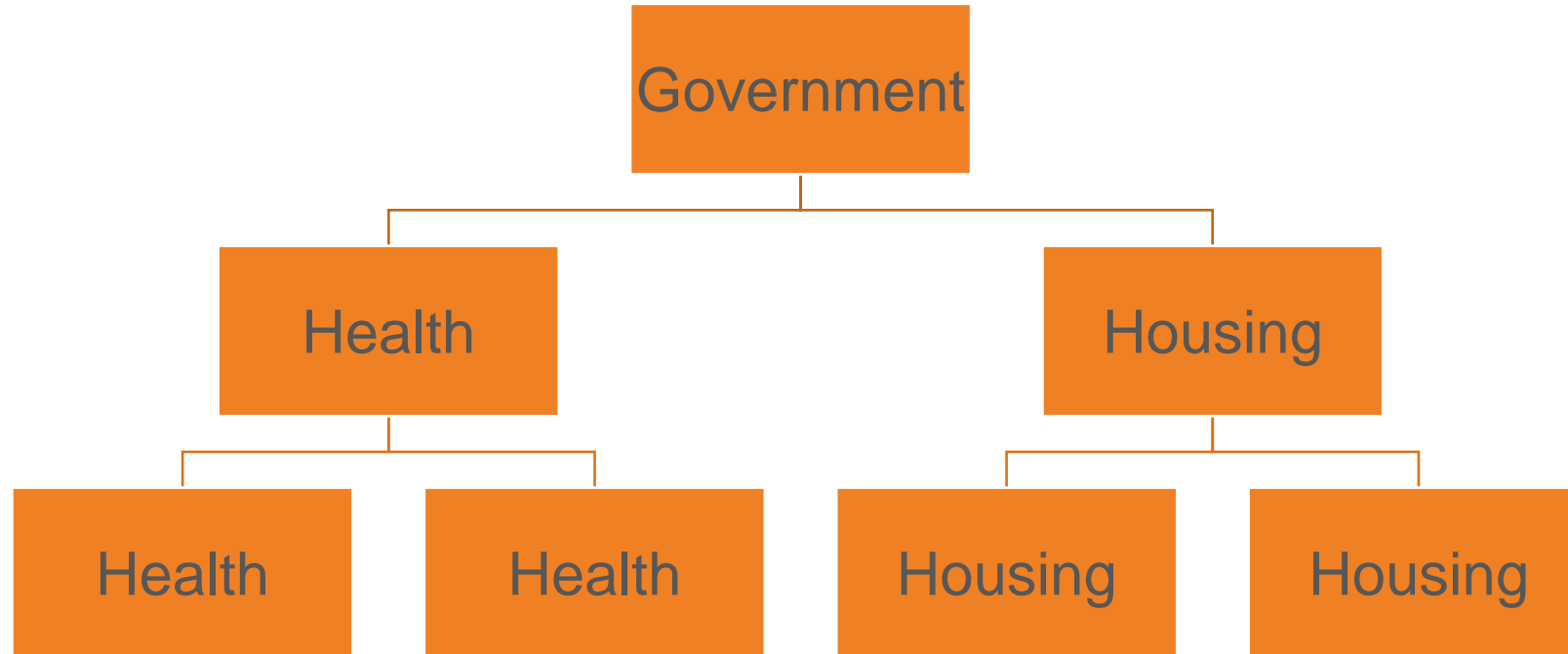




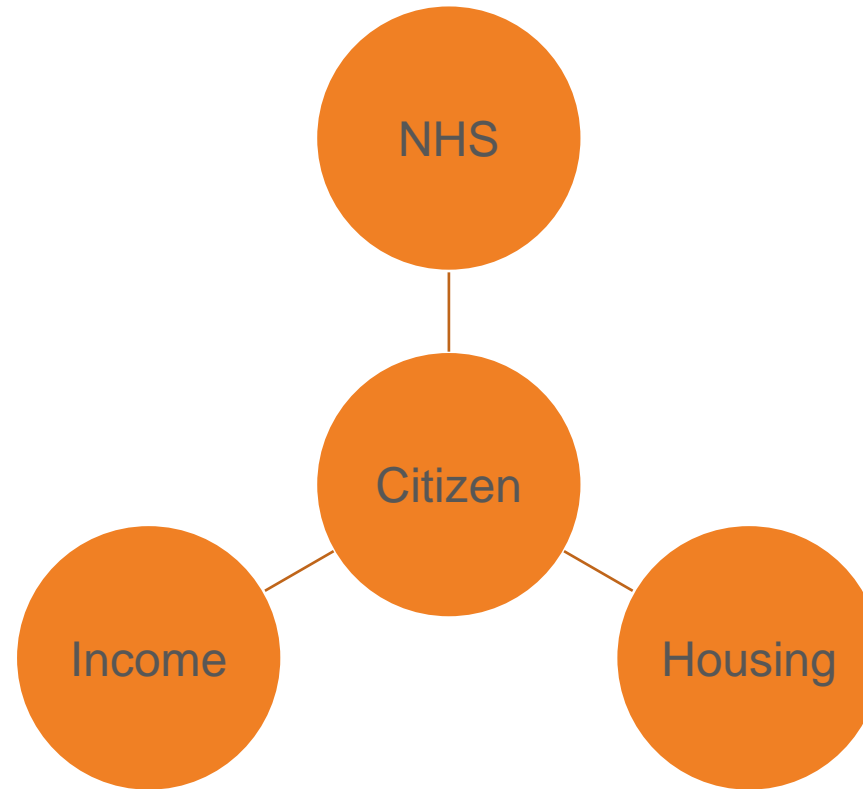
The welfare state

Beveridge's 'Giants'	Modern response
'Want'	Social security
'Disease'	NHS
'Ignorance'	Education/lifelong learning
'Idleness'	Employment/leisure
'Squalor'	Housing/regeneration

Government by hierarchy



Services organised around the person



What works in partnership working?

- Limits of ‘structural solutions’
- Focusing on outcomes (that matter to people)
- Working with different cultures and values
- Enabling people to join up their own care and support in a way that works for them

“Good support isn’t just about ‘services’ – it’s about having a life.”

