



Housing with Care Matters

E-news from the Housing Learning & Improvement Network

020 7820 8077

info@housinglin.org.uk

www.housinglin.org.uk

@HousingLIN

@HousingLINews

#HLINenews

- 2 Policy & Funding News
- 3 Market News
- 5 Housing Design Awards
- 5 Making Extra Care Housing Go Viral
- 5 New Housing LIN Resources
 - New reports / briefings
 - New case studies
 - New viewpoints
 - New blogs
 - New Inspirational Achievements
- 7 Other Useful Resources
 - *Housing and ageing*
 - *Housing and learning disability*
 - *Housing, health and social care*
 - *Housing and dementia*
 - *Safeguarding & MCA*
 - *Healthy planning and design*
- 14 Going Digital / Telecare Update
- 14 Research Round-up
- 15 Housing LIN Regional Highlights
 - *English regions*
 - *Wales*
 - *Scotland*
- 21 Housing LIN Regional Meetings
- 21 Other Events



Emma Maier, Editor, Inside Housing, will be chairing the 2018 Housing LIN annual conference

REGISTER FOR THE HOUSING LIN ANNUAL CONFERENCE

Hot on the heels of the CLG Select Committee's report on housing for older people (see p.2), this year's Housing LIN's annual conference has the theme: 'An IdeasFest: A Fresh Look at Homes for All Ages'.

The award winning Inside Housing editor, **Emma Maier**, will chair the event at the Kia Oval in London on **Friday, 23rd March** and our confirmed keynote speakers include: **Helen Hayes MP**, from the CLG Select Committee; **Geeta Nanda OBE**, Chief Executive, Metropolitan Housing Trust; **Professor Jeremy Myerson**, Helen Hamlyn Professor of Design at the Royal College of Art and a Visiting Fellow in the Oxford Institute of Population Ageing at the University of Oxford and **Dr Bill Thomas**, creator of The Green House®, and co-founder of ChangingAging, and Global Chair of Evermore, USA. You can find full event & registration details here: <https://goo.gl/eYvBgL>



Attendees at the 2017 Housing LIN Annual Conference, held at the Kia Oval in London



POLICY & FUNDING NEWS

A selection of key documents and announcements we have covered in our weekly bulletin over the last few months

CLG Select Committee on housing for older people

Last year, the Committee heard from experts and providers of specialist retirement housing as part of its inquiry into housing for older people, including our very own Jeremy Porteus. The Committee's findings have now been published and include calls for the wider availability of housing advice and information and for the Government to recognise the link between homes and health and social care in the forthcoming social care green paper.



The Committee also recommends that the National Planning Policy Framework be amended to encourage the development of more housing for older people and that councils identify a target proportion of new housing to be developed for this purpose, as well as publishing a strategy which explains how they intend to meet the housing needs of older people in their area.

Read more and download the full report at: <https://goo.gl/5X3HmN>

Housing LIN responds to Supported Housing Consultation

Further to the announcement in October 2017 to drop its LHA proposals for supported housing and the wider social housing sector, the government issued a policy statement and 2 consultation papers setting out a tailored approach to protect and encourage the supply of a wide range of supported housing. The consultation period ended on 23 January and copies of the Housing LIN's responses on sheltered housing/extra care housing and short-term accommodation can be found via this link: <https://goo.gl/5WtvdK>

Additional £42m DFG allocations

On 24 January, new Housing and Homelessness Minister, Heather Wheeler, announced an extra £42 million of government funding for Disabled Facilities Grants, to be allocated to local housing authorities, which can be used to make a range of adaptations

to a disabled or older person's home, so they can live independently and safely.

More at: <https://goo.gl/XpXZeC>

Joint CLG and Health Select Committee Inquiry on the long-term funding of adult social care

This Committee has launched a joint inquiry on the long-term funding and provision of adult social care to feed in to the Government's forthcoming Green Paper.

- How to fund social care sustainably for the long term (beyond 2020), bearing in mind in particular the interdependence of the health and social care systems; and
- The mechanism for reaching political and public consensus on a solution.

Written submissions are invited by 7 March. For more details see: <https://goo.gl/t9buJo>

Adult Social Care Green Paper

On 16th September 2017, (then) First Secretary of State Damian Green announced that the government will publish a green paper on care and support for older people by summer 2018. Latest details on how the government proposes to improve care and support for older people and tackle the challenge of an ageing population can be found in this briefing.

Download from: <https://goo.gl/uRQu9r>

Submission to the Women and Equalities Select Committee inquiry

This Housing LIN submission to this Inquiry into the 2017 Race Equality Audit highlights findings within the Audit which are relevant to older people from BME communities, as well as disabled BME people, and their housing and care needs. The document also identifies the key evidence gaps (in these areas) within the Audit.

Read more at: <https://goo.gl/bQ4Lma>

New Minister for Loneliness appointed

Tracey Crouch has been appointed as a new Minister for Loneliness, inspired by the campaigning of the late MP Jo Cox. For more visit: <https://goo.gl/63jFaz>



Tracey Crouch MP,
Minister for Loneliness



Rural Housing for Older People

The third and final APPG inquiry session on housing and care for older people inquiry took place last month. The aim of the inquiry, jointly chaired by Lord Best is to consider the obstacles to ensuring older people living in rural areas enjoy appropriate housing and have access to adequate at home care and support; and to make recommendations to Government, and those planning, commissioning and operating housing and care in rural areas. The inquiry is due to report after Easter.

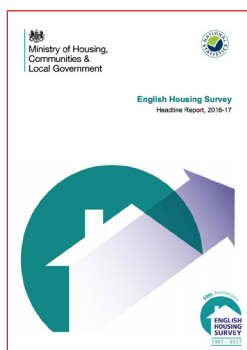
Download the Policy Initiatives at:

<https://goo.gl/3fwUbw>

Leasehold houses to be banned and future ground rents set to zero

New measures to remove unfair and abusive practices within the leasehold system that includes a ban on leaseholds for almost all new build houses, has been proposed by Communities Secretary, Sajid Javid. This news comes as the government attempt to provide a 'fairer, more transparent system' for homeowners in a bid to help fix the country's broken housing market. Have your say at: <https://goo.gl/ceru7f>

English Housing Survey 2016-2017



The latest survey finds that there has been an increase in older people renting. There are now 414,000 older people privately renting, a jump from 254,000 in 2007. For more on PRS, see items in Market News below and our new briefing on the topic. Download from:

<https://goo.gl/1snLH3>

Developers and NHS collaborate to build a healthy national future

Learning from the experience of the Healthy New Towns scheme, in January 2018, NHS England invited applications for housing developers and associations to join a national network that will help improve the health of the nation, by benefiting every new housing development in the country. We look forward to hearing the outcome.

More at: <https://www.england.nhs.uk/2017/12/healthy-new-towns-2/>

MARKET NEWS

A selection of key market news items we have covered in our weekly bulletins over the last few months

CMA Care Homes Market Study

This document is the final report of the Competition and Markets Authority's market study into residential and nursing care homes for older people. Broad issues identified were that those requiring care need greater support in choosing a care home and greater protections when they are residents; and that the current model of service provision cannot be sustained without additional public funding. Download at: <https://goo.gl/Yb29T4>



New Legal & General Older People's Care Survey

The survey of local authorities across the UK, supported by Legal & General, reveals that older people face an ongoing struggle to get the care they need, with 4.2m people aged 75 and over living in areas that do not have enough care. More at: <https://goo.gl/k6K1w8>

Renaissance acquisition doubles PegasusLife retirement portfolio



PegasusLife

PegasusLife have acquired retirement living developer rival Renaissance, expanding its portfolio in a move that will make the group the third biggest retirement living developer in the UK.

See: <https://goo.gl/PMLaQU>

Funding secured for Audley Group developments

Audley Group has completed the refinancing of its debt facilities with a five-year term loan of £125m, jointly funded by HSBC and Bank Leumi (UK) which will fund all existing developments within the group across both luxury brand Audley Villages and new mid-market provider Mayfield Villages, as well as new locations, covering the cost of land acquisition and development for its new retirement developments.





Morgan Sindall creates extra care JV

A deal has been struck between Morgan Sindall Investments (MSIL) and health and community care property developer Ashley House, for a 50-50 joint venture partnership to join the extra care housing market. The venture will be called Morgan Ashley Care Developments with MSIL acquiring 50% stake of the new company. Details at: <https://goo.gl/b8xfu1>

**MORGAN
SINDALL**

Legal & General builds presence in retirement homes



Helical are selling a portfolio of four retirement villages worth £102m to Legal & General, taking the latter's stock of retirement homes from 300 to about 1,000. This is the second

acquisition by the company who purchased the company behind the Inspired Villages brand for £40m last August. Read more at: <https://goo.gl/RfNRcF> (requires registration)

Multigenerational living growing in popularity

Following suit with our focus on co-housing this quarter, this article has put forward that because many first-time buyers struggling to climb onto the property ladder and some of the older generation struggling to downsize, the popularity of multigenerational living has grown substantially. See: <https://goo.gl/6z8j8Q>



Nationwide offers older interest-only mortgage borrowers a lifeline with an equity release plan to stop them having to sell their homes



Research has shown 200,000 pensioners are now struggling to repay 'interest-only' mortgages, calling for

Nationwide Building Society to offer a 'lifetime mortgage'. This scheme will throw a lifeline to those unable or struggling to pay mortgage debts. More at: <https://goo.gl/8u7V3r>

Renting in retirement: How feasible is it?

In 15 years it is estimated that the number of people to be renting their home from a private landlord will double to more than nine million. This article from the BBC looks at



the feasibility of renting whilst you are no longer earning a salary. According to research by Development Economics for Scottish Widows, retirees who don't own their own homes will be paying an average of 42% of their income in rent. For details, visit: <https://goo.gl/XMgDTf>

Baby boomers, like millennials, are flocking to rentals offering a 'hands-free' lifestyle

With a growing interest in PRS, US census figures have shown that baby boomers there are the fastest-growing group of renters, with research detailing many want amenity-rich full-service buildings in good neighbourhoods. By 2020, more than 5m baby boomers are expected to rent their home. More at: <https://goo.gl/F51GtU>

The Airbnb for affordable housing is here

Another idea fitting our co-housing focus by bridging the gap between young and old, a new platform that pairs older homeowners with young renters has flourished due to the interest in multigenerational living. *Nesterly*, matches younger people in need of affordable housing with older people who have affordable rooms to rent. Visit: <https://goo.gl/1tDQVj>

nesterly

Fifth of older UK workers saving nothing for retirement, research reveals



Research from Aviva has shown that many older workers are 'occasional' or 'absent' savers. This means that money is saved infrequently or on an ad-hoc basis, with no clear savings goal and 42% of older workers don't know how much money they would need in retirement. See: <https://goo.gl/UmErJ3>

RHS Quarterly Review

This quarterly review from Retirement Homesearch provides findings of a survey in which 1,000 people aged over 50 were asked whether they were considering (or already living in) a specialist retirement community, and what factors would be key to their choices about retirement living. The findings gives stakeholders keen to grow this market an idea of where priorities could best be focused to provide for older consumers. More at: <https://goo.gl/Fuo8NE>

**RETIREMENT
HOMESEARCH**



HOUSING DESIGN AWARDS

Once again the Housing LIN is proud to be a sponsor of the HAPPI category at this year's Housing Design Awards. Organised by Design for Homes, the deadline for submission is 14 March 2018. Don't miss out!

Last year's winning completed HAPPI project was Your Housing Group's extra care housing scheme, Willow Barns, in Stoke on Trent, designed by PRP Architects. The HAPPI project winner



Willow Barns, Stoke-on-Trent

was PegasusLife's The Vincent in Bristol, designed by architects Allford Hall Monaghan Morris. And to round a successful year for housing for older people projects in 2017, the overall winner of last year's Housing Design Awards went to New Ground, the Older Womens CoHousing in Barnet, designed by PTEa. This is also featured in a recent Housing LIN case study, Community Building for Old Age: Breaking New Ground. The UK's first senior cohousing community, High Barnet. Find the case study at: <https://goo.gl/smXp6d>

MAKING EXTRA CARE HOUSING GO VIRAL!

Following the success of our crowdfunding campaign last year, we are delighted to release the first two from a forthcoming series of YouTube videos from the Housing LIN documenting good practice and the need for outstanding levels of extra care housing nationwide.



Launched last month at the Future of Extra Care workshop in Bristol, the first two videos entitled

[‘Listening to residents in extra care housing: findings from the ECHO research project’](#) and [‘Influencing policy and operations: outcomes from the ECHO research project’](#), are a collaboration between researchers from the universities of

Bristol, Worcester and Kent alongside the Housing LIN, called the ECHO project. Funded by the National Institute for Health Research (NIHR) School for Social Care Research (SSCR), the project was a two-year study started in October 2015 with the main aim of exploring how care is negotiated and provided in extra care housing schemes for older people.

And if you found these of interest, you can view a selection of other videos on extra care housing previously produced by the Housing LIN at: <https://goo.gl/49v4Gj>. We also look forward to promoting the other videos in this series over the coming months.

NEW HOUSING LIN RESOURCES

Keeping you informed on a selection of new Housing LIN resources.

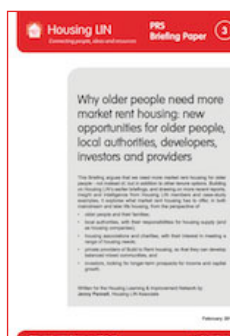
NEW REPORTS/BRIEFINGS

An Occupational Therapist's Access Checklist - a practical Tool

This Housing LIN checklist has been developed as a quick reference tool, to support decisions when making recommendations for the design of accessible and inclusive housing, when there may be a case to be made for exceeding the minimum requirements laid out in the Building Regulations. <https://goo.gl/UKupDh>



Why older people need more market rent housing: new opportunities for older people, local authorities, developers, investors and providers



This Briefing argues that we need more market rent housing for older people - not instead of, but in addition to other tenure options. Building on our earlier briefings, and drawing on more recent reports, insight and intelligence from members and case-study examples, it explores what market rent housing has to offer, in both mainstream and later life housing. <https://goo.gl/DFUaeH>



NEW CASE STUDIES

In this issue, we draw attention to a selection of new case studies

Inspiring new housing choices for older people in Walker, Newcastle

This Housing LIN Case Study no 141 takes a look at Your Homes Newcastle's new older people's housing scheme, Tree Top Village in Walker, Newcastle. It provides an overview of the new 'village' and captures the lessons learned following a North East Housing LIN regional meeting and study tour.

<https://goo.gl/vxqBqG>



How Extra Care Living helped in the Regeneration of Longbridge

Written by Wendy Griffin, Director at architects Nicol Thomas, this Housing LIN Case study (no 144) describes how a common goal can bring renewed life into a struggling community. Longbridge Retirement Village, developed by The ExtraCare Charitable Trust (ECCT), plays an intrinsic part in this rebirth process.

<https://goo.gl/E79qE6>



Designing for an Autonomous Community - Bruyn's Court

This Housing LIN case study (no 145) features a multi-award winning scheme that heralds the beginning of a major new programme to transform the housing offer for older residents in Thurrock.

<https://goo.gl/5PPNUy>

Co-designing independent living for people with a learning or physical disability

This case study features an award-winning independent living scheme in Andover, Hampshire. Managed by The Enham Trust and designed by Design Engine architects, Bradbury Place offers 8 one and two bedroom wheelchair accessible apartments and enables the Trust to fulfil its mission to provide support to disabled and disadvantaged people to live the life they choose with care support, access to work and an accessible home.

<https://goo.gl/zrQa1p>

NEW VIEWPOINTS



Well-being and age in co-housing life: Thinking with and beyond design

This Housing LIN viewpoint no 89 considers how spatial design, resident control and home technologies matter to 'successful ageing' in co-housing communities - both intergenerational and senior.

<https://goo.gl/6s7PDi>

Kindliness – developing peer support within sheltered housing in Dorset



This case study focuses on a toolkit developed by Bournemouth University working in partnership with Dorset County Council and a number of housing associations. This case study defines the concept of kindliness as it relates to sheltered housing, and outlines interventions which can be used to seek to engender

the culture change often necessary to optimise peer support and kindliness in sheltered housing environments. <https://goo.gl/18enC6>

NEW BLOGS

Following the announcement that the promised Social Care Green Paper will be published before summer 2018, Jeremy Porteus outlines 4 levers that could help build a genuinely integrated framework in [Beyond the Green Paper: Destination Networked Care. Taking the L-plates off](#). And in another blog, he sets out his ideas on more collaborative forms of housing and care in [Shared Lives, Housing Cares](#).

We continue to publish a number of thought-provoking contributions on a wide range of housing and housing related health, care and/or support issues. They can all be found on our guest blogs page here: <https://goo.gl/jA7nyU>



NEW INSPIRATIONAL ACHIEVEMENTS

This exclusive webpage for our sponsors showcases examples of their award-winning design, innovative service development, or the findings from pioneering new research.



On our latest #InspirationalAchievements page we shine the light on Keepmoat Regeneration, part of the ENGIE group, and their new care ready retirement living brand, Canvas Lifestyle at Waterton Green, Wakefield.

Visit: <https://goo.gl/wA1gKU>



It suggests that the UK lags behind a number of other countries in the provision of specialist later life housing and calls for sector-specific legislation and regulation, aimed at increasing both consumer confidence while at the same time providing longer-term certainty to operators and investors in the UK. <https://goo.gl/NuyvG4>



2018 Silver Spenders

OTHER USEFUL RESOURCES

Keeping you informed of a selection of new resources we have covered in our weekly bulletin, LINKs.

HOUSING AND AGEING



The role of home adaptations in improving later life

This report is one of two new evidence resources from the Centre for Ageing Better and the University of West of England. The findings identify that small changes to homes can improve quality of life and relieve pressure on NHS and social care. <https://goo.gl/izStoc>

Room to improve. The role of home adaptation in improving later life

And this systematic review of the best recent scientific evidence on how home adaptations can contribute to improving later lives is the second of two new resources from the Centre for Ageing Better and the University of West of England.

<https://goo.gl/WHg4pf>

Stronger Foundations - International Lessons for the Housing with Care Sector in the UK

This ILC-UK report, supported by ARCO, discusses the issue of terminology around later life housing and housing-with-care in the UK and other international contexts (NZ, Australia and the US).



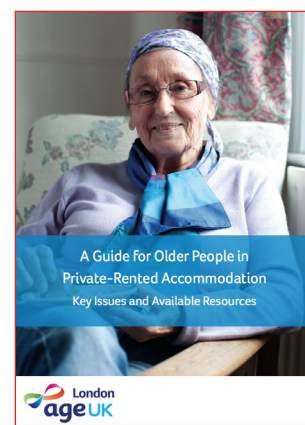
This report by Legal & General shows that the equity release market is on the rise and now totals over £3billion a year. The single largest 'draw down' was for paying for refurbishment and renovations (39%). Interestingly 15% was to assist another family member purchase a home.

<https://goo.gl/f2H6s1>

A Guide for Older People in Private Rented Accommodation

Published by Age UK, this guide is aimed at older people who rent, or are thinking of renting, their home in the private rented sector. It provides some basic information about the rights and responsibilities of tenants and landlords and points to where people can find more detailed information and support.

<https://goo.gl/7QQ1ce>



Life in the Rental Market: What The Future Holds For Older Renters

Outlining the findings of a survey on 'life in the rental market' by Generation Rent, this guide is aimed at older people who rent, or are thinking of renting, their home in the private rented sector. It provides some basic information about the rights and responsibilities of tenants and landlords and points to where people can find more detailed information and support. <https://goo.gl/kSt8hM>

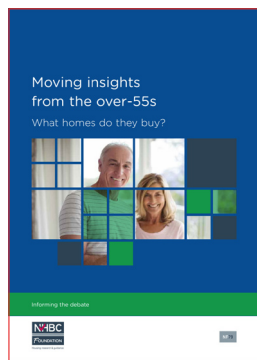


Age UK Factsheet 64: Specialist housing for older people

And this new Age UK factsheet contains information about housing intended specifically for older people, such as sheltered housing.

<https://goo.gl/ToKdnkm>

Moving Insights from the Over 55s: What Homes do they Buy?



This NHBC Foundation report studied the home-buying trends of the over-55s, focused on those who were purchasing a new build home. It found that 46% of the over-55s surveyed had invested extra money in their latest house move and that 40 percent of them had chosen a four bedroom house, despite an average occupancy of just

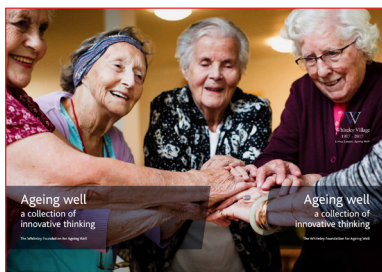
two people. Of the moves made, 39% downsized to a home with fewer bedrooms, a third moved to a home with the same number and 28% upsized to a home with additional bedrooms.

<https://goo.gl/wvna1N>

Ageing well: A collection of innovative thinking

The Whiteley Foundation has collected together 12 inspiring articles looking ahead to the next 20 years that explore different elements that will contribute to a good life for older people. The report features important voices from across the health and housing sectors, all providing thought-provoking insights into the future of elderly living.

<https://goo.gl/pSHiFC>



Homes fit for Ageing Brochure

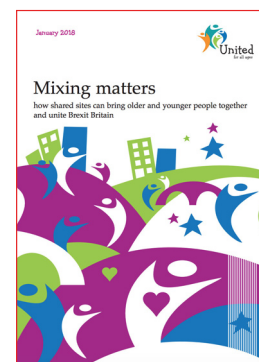
This Care & Repair England brochure outlines why ageing well at home is key to health, housing and care, backed up with useful facts and statistics. It sets out a series of policy and practice actions around keeping properties in good repair, accessing safety measures and adaptations, and designing homes to ensure homes are fit for everyone.

<https://goo.gl/DBQFwQ>

Mixing matters: how shared sites can bring older and younger people together and unite Brexit Britain

In a social climate dogged by post-Brexit detachment, Unite for All Ages have released this new paper in a bid to promote the idea of intergenerational living despite obvious disassociations.

<https://goo.gl/23h9NF>



Intergenerational Seniors Residence in the Netherlands

A video from Humanitas, a social service and community building organisation from the Netherlands, featuring a project that provides free accommodation for students who in return spend time with their older co-residents.

<https://goo.gl/sY51F3>

Community Led Housing: a Key Role for Local Authorities

This report by the Co-operative Councils' Innovation Network illustrates why and how councils across the UK are enabling and supporting Community-Led Housing (CLH) and have produced case studies on 12 local authorities in England, Scotland and Wales.

<https://goo.gl/qLWsqj>

A helping hand improves neighbourly spirit

Recently launched as a pilot across 15 Hanover estates, Good Neighbour schemes encourage residents to look out for others who may be in need of practical help or emotional support. As part of Hanover's ongoing commitment to improving residents' wellbeing, the idea is to build a traditional sense of community, thereby reducing isolation and loneliness.

<https://goo.gl/o2oLzU>

Housing insight: Older people preparing their homes for staying put

And finally, this BMG research paper for Care & Repair England showcases the results of an online poll with 481 UK residents aged 55 or over to ascertain their views on home adaptations.

<https://goo.gl/FwCYJv>



HOUSING, HEALTH & SOCIAL CARE

Doing Care Differently

This Independent Age report examines six themes dominating discussions on social care right now – demand; funding and responsibility; quality; integrated care; technology; and sustainability. It includes a contribution from the Housing LIN's Jeremy Porteus. <https://goo.gl/TjvCuY>

Healthy Homes: Accommodating an ageing population

This report from the Institute for Mechanical Engineers calls for Government to introduce financial incentives for construction companies to build for older living. It also recommends that product suppliers and manufacturers step up efforts to develop retrofit technology to allow people to live in their homes for longer.

<https://goo.gl/3B69if>



Understanding intermediate care, including reablement: A quick guide for people using intermediate care services

This Quick Guide from the National Institute for Health and Care Excellence (NICE) covers topics such as: what immediate care services are, what to expect from them, who the immediate services

team is and any useful further information.

<https://goo.gl/DkF2zM>

New sleep-in shift pay compliance scheme launched to support social care sector and identify back pay for workers

This new sleep-in shift pay compliance scheme was launched by the government to support social care sector and identify back pay for workers. The scheme has been designed to help ensure workers are paid what they are owed, while also maintaining important services for people who access social care. <https://goo.gl/HvAsnn>

Evidence to inform the commissioning of day centres for older people

Research by the Institute of Gerontology at King's College London into the role and purpose of generalist day centres for older people has identified the potential for their development and optimisation to improve older people's health and wellbeing, support carers and maximise the impact of health and social care services. <https://goo.gl/hrr84S>

Evaluation of Housing for Health Permanent Supportive Housing Program

Housing for Health (HFH), a division within the Los Angeles County Department of Health Services (DHS), aims to provide supportive housing to DHS patients with complex medical and behavioural health issues who were experiencing homelessness. This report includes an assessment of the permanent supportive housing programme structure and goals and identifies its effects on service use and cost expenditures from several county departments. <https://goo.gl/gq3BDz>

Homes & Wellbeing: Breaking down the stereotypes

This interim report explores the relationship between social housing and wellbeing from customers across VIVID's housing stock located throughout Hampshire.

Research carried out by the Universities of Birmingham and Manchester found that social housing offers a stable base in which renters facing wider difficulties can find security and a degree of protection from feelings of anxiety. <https://goo.gl/ZxGy2y>



Integrated commissioning for better outcomes: A commissioning framework v4

The Commissioning for Better Outcomes Framework launched in 2015 was redrafted in 2017 to be used in the increasing number of integrated commissioning arrangements across Health and Social care. The ICBO project group would like to invite interested organisations to try out the framework themselves in any integrated setting between January and March. For any queries or interest in participating in trying out the new framework, please email the dedicated inbox we have created: ICBO@local.gov.uk Find out more at: <https://goo.gl/UkbfYU>



CQC warn that experiences of older people using health and adult care services are affected by fragmentation across local health and care systems

This CQC interim report, following a series of reviews of local systems, warned that the experiences of older people using services are affected by fragmentation across local health and care systems. <https://goo.gl/LgmE7d>

How-to Guides for creating an Asset-based Area: Transforming conventional into asset-based practice

Taking an asset-based approach to commissioning and providing services for people with care and support needs means that their skills, interests and resources are valued and included. This guide, written by Clive Miller and Alex Fox, and available via the TLAP website, is the first in a series of How-to Guides, which put flesh on the bones of the vision of Asset-Based Areas and how they can be developed. <https://goo.gl/1NRrxn>

Six innovations in social care

This paper for TLAP captures the ideas of a group of innovators in social care in a series of one-page profiles of their innovations. This document is useful for anyone who is interested in new models of care and support, and would like to find out about different innovations that are being developed across the UK at the moment.

<https://goo.gl/QUtrRA>

Six innovations in social care

Community Catalysts CIC
Community Circles
Local area coordination
Shared Lives
Homeshare
Wellbeing Teams

How do you measure wellbeing? A new guide for frontline organisations

This New Economics Foundation resource was developed in partnership with the 'What Works Centre for Wellbeing' and CLES, Locality and NCVO. The guide aims to provide tools for those working in communities to understand their impact, use these findings to improve the quality of their work, and share knowledge with funders and commissioners.

<https://goo.gl/ZCebY6>

Growing innovative models of health, care and support for adults

This briefing is based on research conducted by Nesta, SCIE, Shared Lives Plus and PPL. It plans for the forthcoming care and support green paper.

<https://goo.gl/5Jj83M>

Reimagining Community Services – Making the most of our assets

This Kings Fund report argues that a radical transformation of community services is needed, increasing the share of the NHS budget allocated to these services, and making use of all the assets in each local community wherever these are to be found. The report also highlights the need for collapsing silos between services and reducing fragmentation in service delivery, with renewed focus on improving population health as well as integrating care. <https://goo.gl/h6T7RZ>

Which? reveal best and worst home providers

In this report, based on analysis of the CQC ratings of care homes across England, Which? reveals that one in four English care homes are rated inadequate or requiring improvement.

<https://goo.gl/3Bgh3L>

Reducing emergency hospital admissions - what is the role of social care?

This Ripfa briefing explores how services can adopt strengths-based approaches when working with older people, to reduce the need for hospital admissions (£10 cost).

<https://goo.gl/ycEzPK>

Reaching Out: influencing the wider determinants of health

This research by the New Local Government Network has found that while public health teams have integrated well with people-focused services in local authorities, and that there is also growing recognition of housing's role in tackling health inequalities, there are weaker connections with economic development teams and Local Enterprise Partnerships (LEPs).

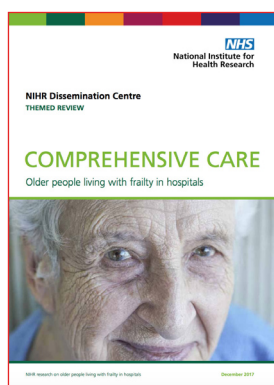
<https://goo.gl/cWqvD2>



Comprehensive Care - older people living with frailty in hospitals

This NIHR evidence review covers four key aspects of caring for older people living with frailty in hospital: assessment; identifying and managing symptoms associated with frailty in hospital; discharge planning; and caring environments.

<https://goo.gl/M77C2x>



Early discharge 'hospital-at-home' gives similar outcomes to in-patient care

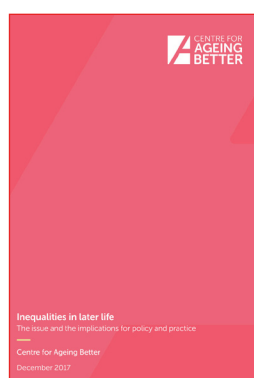
This report presents evidence from a Cochrane Review demonstrating that supported early discharge, where patients received on-going hospital-level treatment in their own home, had no effect on mortality compared with standard in-patient care. Patients had shorter hospital stays, were more likely to be satisfied and less likely to end up in residential care.

<https://goo.gl/wyU9iu>

Inequalities in later life: The issue and the implications for policy and practice

This report sets out the key insights from the Inequalities in later life review and Ageing Better's view on their implications.

<https://goo.gl/DuTPQK>



HOUSING AND LEARNING DISABILITY

Learning disabilities and behaviour that challenges: service design and delivery

This NICE guideline covers services for people with a learning disability and behaviour that challenges, their family members, carers and day to day support. It recommends providing a range of services in the community to minimise the need for inpatient admissions. It also promotes a lifelong approach, emphasising prevention and early intervention.

<https://goo.gl/UUyZa6>

Learning Disabilities Market Position Statement: Good Practice Checklist

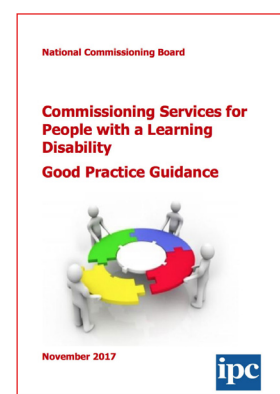
Based on a review of published learning disability market position statements by IPC, this good practice checklist assesses whether they are actually helping to shape the market and to explore their implications for people with learning disabilities and their families. It recognises that people with a learning disability can live successfully in different types of housing.

<https://goo.gl/LfhML4>

Commissioning Services for People with a Learning Disability: Good Practice Guidance (Wales)

This good practice guidance was developed for the National Commissioning Board for Wales to help Regional Partnership Boards to develop their own approaches to the integrated commissioning of services for people with a learning disability.

<https://goo.gl/vyXQuM>



Arden and Solihull TCP: a framework for procuring community supported living

Arden and Solihull Transforming Care Partnership in the West Midlands have developed a commissioning framework for community living, for people with a learning disability and/or autism who display behaviour that challenges.

<https://goo.gl/ATcLLc>

Pan-Lancashire Transforming Care Partnership: Supported Living Framework

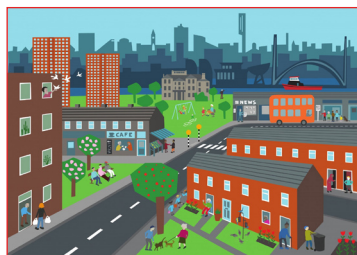
This supported living framework delivers a strategic approach to developing more flexible housing options within Lancashire to facilitate safe and effective hospital discharge.

<https://goo.gl/6Lq8k6>



HOUSING & DEMENTIA

Study shows therapeutic impact of neighbourliness on dementia



New research conducted by the University of Manchester found that familiarity with people in local shops, cafes and even on the street, reaps enormous

benefits for those living with dementia. Supported by the Economic and Social Research Council and the National Institute for Health Research this five year study is one of the first and largest studies to investigate how people living with dementia, and their partners, experience their local neighbourhoods. It also showed that neighbourly acts of kindness has huge effects on their wellbeing. <https://goo.gl/Q1t9vD>

Dementia: number of people affected to triple in next 30 years

The Global Dementia Observatory, a web-based platform launched by WHO, will track progress on the provision of services for people with dementia and for those who care for them, both within countries and globally. It will monitor the presence of national policy and plans, risk reduction measures and infrastructure for providing care and treatment. <https://goo.gl/69Fzus>

How dementia-friendly technology can improve lives

These 6 information sheets from Dementia Friendly Technology (DFT) Working Group set out how dementia-friendly technology can improve lives. <https://goo.gl/HVCiHr>

Dementia 2020 Citizens' Engagement Panel

And finally, the Department of Health Dementia 2020 Citizens' Engagement Panel online Hub provides a space for the Panel to share their latest findings and publicise new questionnaires or discussions people with dementia and their carers can take part in. Anyone with a dementia diagnosis, or carers for someone with a diagnosis, are invited to join the panel and help to improve services for people with dementia and their carers.

<https://goo.gl/z6E7Na>

SAFEGUARDING & MENTAL HEALTH

Reform of Deprivation of Liberty Safeguard: Submit your views

The Joint Committee on Human Rights has announced an inquiry into the reform of the DoLS. Specifically, it will look into:

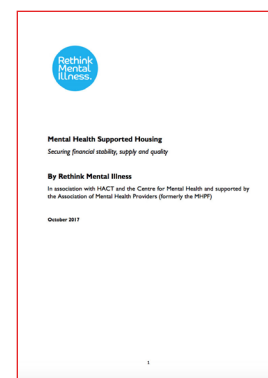
- Whether the Law Commission's proposals for Liberty Protection Safeguards strike the correct balance between adequate protection for human rights with the need for a scheme which is less bureaucratic and onerous than the Deprivation of Liberty Safeguards
- Whether the Government should proceed to implement the proposals for Liberty Protection Safeguards as a matter of urgency
- Whether a definition of deprivation of liberty for care and treatment should be debated by Parliament and set out in statute

The Committee welcomes written submissions by Friday 2 March. More at: <https://goo.gl/Xa95Mj>

Mental Health Supported Housing: Securing financial stability, supply and quality

This report looks specifically at supported housing for people living with mental illness and how this is funded. It was published by Rethink Mental Illness in response to the Government's former proposals to cap benefits for people living in supported housing.

<https://goo.gl/tUVsh3>



An independent report of an integrated model of community forensic mental health provision

This report from HACT suggests a new approach to community forensic mental health provision could result in savings and better resident outcomes.

<https://goo.gl/znk9o8>

London's Mental Health Discharge Top Tips

This practical tool from the London Urgent and Emergency Care Improvement Collaborative identifies top tips that represent a standard of collaborative problem solving and working to support timely transfer of care and reduce delays in mental health hospital discharges pan London. There are several references to housing and what exemplary housing involvement looks like.
<https://goo.gl/JfJ6Ks>

A Practice Primer on Mental Health in Older People

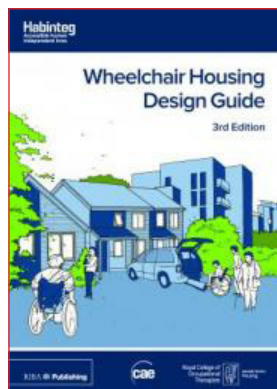
With ninety percent of older people consulting their GP at least once each year, primary care plays a pivotal role. This summary of mental health problems in older people, which are not directly related to physical illness or brain disease, underlines the risk primary care professionals take when attributing symptoms to 'old age' or considering the patients' situation as futile.
<https://goo.gl/YJxin3>

HEALTHY PLANNING & DESIGN

Wheelchair Housing Design Guide: 3rd Edition

The new edition of Habinteg Housing's 'Wheelchair Housing Design Guide' explains how to design and detail a home that is fully manageable by wheelchair users and maximises their independence. Published by RIBA, this fully-updated, activity-based guide discusses design considerations, requirements and recommendations for various activities carried out within the home; provides design solutions and good practice examples of how to comply with the building accessibility regulations and Building Regulations Part M; reflects and promotes the values and principles of existing strategies for social inclusion, and promotes the long-term cost benefits of designing to wheelchair accessibility standards.

- Fully updated to comply with the latest regulatory changes to Part M
- Offers advice on maximising independence for wheelchair users and their families, as well as



detailing the minimum technical standards to comply with Building Regulations

- Accessible information which is easy to navigate for both practitioners and students

Download from: <https://goo.gl/nZ6wg7>

Planning trends: Extra Care Development

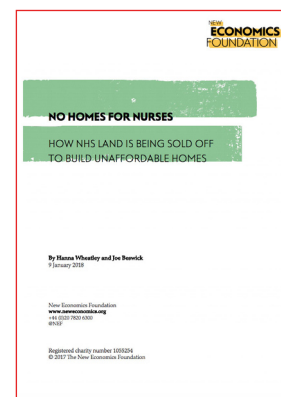
This Alder King articles states that better use of Strategic Housing Market Assessments by local authorities to establish the needs of older people in their area will make speculative planning applications for C2 residential institutional development increasingly challenging.
<https://goo.gl/qgZnKM>

International Design For All Foundation Good Practices Awards

The 9th edition of the International Design for All Foundation Good Practices Awards recognise achievements in the field of design for all. They aim to demonstrate that the implementation of design for all/universal design in any form contributes towards improving quality of life for everyone. Entries are welcome from 1 January 2017 to 23 February 2018. <https://goo.gl/TFQSSr>

No homes for nurses: How NHS land is being sold off to build unaffordable housing

This briefing by the New Economics Foundation (NEF) looks specifically at the NHS sites which have been sold so far under the Government's public land sale programme. Their analysis reveals that the sale of NHS land is fundamentally failing to produce the affordable homes needed, and is in fact exacerbating the deep affordability crisis across the UK.
<https://goo.gl/Zf7aEo>



Practical Guides for Creating Successful New Communities: creating health-promoting environments

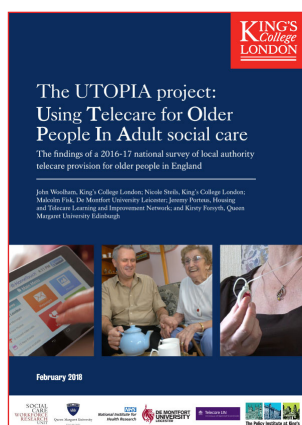
This practical guide from the Town and Country Planning Association (TCPA) suggests ideas on how new Garden Cities should be designed, in order to promote the health of their inhabitants.
<https://goo.gl/LvBMuZ>



GOING DIGITAL / TELECARE UPDATE

For latest information on telecare, check out our weekly updates and monthly newsletter at:
www.telecarelin.org.uk/News

The UTOPIA project: Using Telecare for Older People In Adult social care



This King's College London research report aimed to find out how telecare is being used by local authority adult social care departments to support older people in England. Its findings demonstrate how local authorities are making best use of telecare to support the needs of older and vulnerable people at home; these included the use of

telecare to delay and reduce the need for care and support (97%), to enhance quality of life for people with needs for care and support (90%), to help with safeguarding (85%) and to prevent carer breakdown (84%). Over half (69%) also indicated a role for telecare as something that could be made available to people who were not eligible for social care, and as part of a 'housing offer' – for example, in sheltered (OSH) and very sheltered housing (VSH) or extra care (63%).

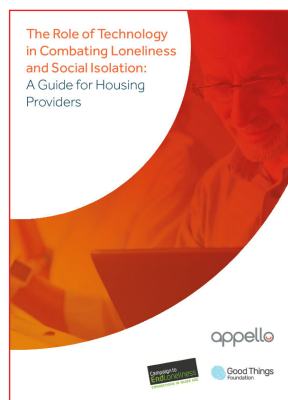
<https://goo.gl/Mo3csz>

The Role of Technology in Combating Loneliness and Social Isolation: A Guide for Housing Providers

This study from Appello, in collaboration with Good Things Foundation, suggests a huge opportunity for housing providers to improve the lives of their residents by upgrading existing technology and, or, embracing mature and readily available communications

technologies to connect older people with neighbours, friends, family and carers.

<https://goo.gl/L9K7sx>



Announcing the second Smart Ageing Prize

The [AAL Programme](#) and Nesta's [Challenge Prize Centre](#) have identified a gap for technological solutions that support older people to participate fully in social life. The Smart Ageing prize is looking for innovative solutions, supported by a strong and viable business model. The deadline is Friday 30th March 2018.

More details at: <https://goo.gl/FQu5hu>

A Quality Framework for Procurement and Provision of Services

Available to purchase, this two-part outcomes-based international Code of Practice is an essential tool for planning, commissioning and providing good quality and effective Technology Enabled Care Services.

<https://goo.gl/7uhW3d>

Dundee Smart Health & Care Strategy

This 2017-2020 Strategic Plan from Dundee's Health & Strategic Care Partnership sets out their ambition to become a leader in the use of technology, to improve lives and outcomes for the citizens of Dundee.

<https://goo.gl/vbpY4L>

RESEARCH ROUND-UP

ESRC-NIHR dementia research initiative 2018 – outline call

ESRC and the National Institute of Health Research (NIHR) are inviting outline proposals to undertake social science research to support innovation in dementia prevention, interventions and care delivery. Are you looking for a non-academic partner to support engagement and dissemination? The Housing LIN is keen to support knowledge transfer. Deadline for submissions is 16.00 on 15 March 2018.

Find out more at: <https://goo.gl/4zUJji>

More than £1 million for 10 new research projects led by disabled people

Ten new projects across the UK have received between £40,000 and £150,000 of National Lottery funding each, to explore how disabled people can live as full citizens in our society and what changes and support will make that happen in practice.

<https://goo.gl/pDjHth>



HOUSING LIN REGIONAL HIGHLIGHTS

North East

Karbon Homes' new extra care scheme in Alnwick has been highly commended in Inside Housing's Development Awards. Weaver's Court was shortlisted in the best older people's housing development, the scheme received £1.9m CASSH funding from the DH and includes a mixture of one- and two-bed apartments for rent and affordable shared ownership.



Weaver's Court, Alnwick

And over in Darlington, Darlington Extra Care, the national adult health and social care charity responsible for care services at four extra care schemes within Darlington was named winner of the care team award at the Great British Care Awards.

London

This Housing LIN has responded to the GLA Housing Strategy draft for public consultation focused first on the specific chapter which addressed the needs of older and disabled Londoners, 'High Quality Homes and Inclusive Neighbourhoods'. Read here: <https://goo.gl/vjLeXX>

This Shared Ownership Charter, developed by the Greater London Assembly (GLA), in partnership with a working group of Housing Providers in London, aims to improve satisfaction among shared ownership leaseholders by providing a set of best practice principles for Housing Providers to adopt when managing service charges. Read here: <https://goo.gl/nYFDey>

Jewish Care are on course to open their second North-West London independent living scheme with names already being registered for those interested in housing with care and support. The £12m project containing



Artist's impression of Hendon Wohl Court, Hendon

16 one- and 16 two-bedroom apartments for the over 60s, will also provide affordable housing for those on state benefits and priority for Holocaust survivors and refugees.

How the other half live! For those dreaming of an extravagant level of retirement living, The Daily Mail have featured a luxury retirement complex which includes additional amenities such as 'a bellboy, chauffeur-driven BMW and infra-red beams to alert a nurse if you fall' - really putting the extra into extra care. However, all of this comes at a price and a rather large one; on top of the £3m for a one-bed flat is a £1,065 amenities and service charge, excluding any care costs.

More at: <https://goo.gl/Zcymm7>

And finally, in Bunhill, Islington, a 'fantastic' new retirement scheme has been unveiled with 47 flats available for social rent and designed to house people with specific needs such as those with mobility issues or those over 55.

North West

The official opening took place of Limelight, Trafford Housing Trust's new £20m community hub and extra care apartments.



Limelight, Old Trafford

The Housing LIN's NW regional meeting took place there last week and presentations can be found on our archived events page at: <https://goo.gl/iwgh84>

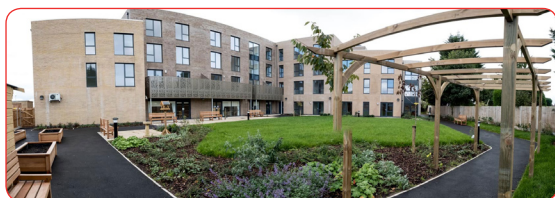
In Kirkby, Liverpool Mutual Homes have been given the thumbs up to deliver a new extra care scheme. Replacing a currently disused brownfield site, the scheme will provide high quality housing and supported living accommodation for some of the area's elderly and vulnerable people. The state-of-the-art extra care scheme will comprise 100 one- and two-bed apartments, with 24-hour support to meet residents' individual needs.

In rural Lancashire, Your Housing Group have submitted outline proposals for care village comprising of a 60 room care home, 60 apartments, 20 bungalows and a surgery between Preston and Grimsargh. A decision is expected shortly.

In Wigan, planning for a refurbishment and extension of a care home in Brown Court has been given the go-ahead by Housing & Care 21, improving the building's sustainability, increasing its aesthetics and improving the wellbeing of its residents.



And lastly, in Ellesmere Port, Magenta Livings' multi-million pound extra care facility has been opened. Aimed at the over 55s offering 60 one- and two-bed apartments as well as 15 bungalows, it is complete with a level-access wet room and 24-hour care.



Hartley Place, Ellesmere Port

South West

Not the biggest news in the January transfer window but PegasusLife have bought Sidmouth Council's HQ, The Knowle in a £7.5m deal which will see the creation of a 113-apartment assisted-living community. Plans were initially rejected in 2016 but have been given the green light following an appeal. See the guest Housing LIN blog for more details: <https://goo.gl/9QuERp>



Quayside, Totnes

The brand new Quayside development in Totnes has opened featuring 60 apartments exclusively for the over fifty-fives. 30 of these Guinness Homes apartments will be available for shared ownership and the other 30 for affordable rent.

A much-needed extra care development, Trinidad Village in Poole has begun construction in what will become an important focal point for the local community. The housing village, managed by Poole Housing Partnership and DH CASSH funded, features a central courtyard with seating areas, landscaped gardens and terraces as well as a restaurant, spa and beauty salon.

Quantum has successfully gained planning consent to develop a new hotel and extra care development in Sherborne in Dorset.

And finally, the Yarlinton Housing Poundbury Extra Care Scheme in Dorset had its opening day last week. Consisting of 63, 1 and 2 bedroom apartments for rental and shared ownership, our SW Housing LIN look forward to a future visit.



Melrose Court, Poundbury

South East

Castleoak have announced that Arun House, the next phase of Elmbridge Village for Retirement Villages in Cranleigh, Surrey, recently marked the topping out of the construction project. The new luxury £4.6 million scheme, which includes twenty retirement living apartments, is on track for completion. When the development is complete in April 2018, the Village will offer more than 190 apartment and 85 bungalows together with a range of superb facilities all designed for the over 65s.

In Hampshire, a consortium led by Ashley House PLC is the new development partner for the County Council's latest Extra Care housing scheme for older people with care and support needs in Romsey. Operated by Places for Living+, the new 54 apartment scheme for rent and sale will replace the former Nightingale Lodge residential care home.

November saw the coming together of 120 health professionals and community representatives to address health-focused priorities for Ebbsfleet Garden City. Imperatives include reducing obesity in children and young adults, improving access to green space and water and building new homes allowing residents to live independently.

The investment in a 'Magic Table' is benefiting the residents living at Flowers House, Bletchley, a specialist dementia care scheme that cares for 34 people living with the disease. The 'Tovertafel' is designed to help with the physical, mental and emotional wellbeing with significant improvement. And read the Housing LIN case study, Breaking down the enigma of dementia: Extra Care at Bletchley Park: <https://goo.gl/bTFsvF>



Residents using the Magic Table in Bletchley

And in Kent, Lawson House in Larkfield near Tonbridge is near completion. This new extra care scheme from Abbeyfield will comprise of 74 one- and two-bed apartments. The scheme is complete with on-site care and support available for over 55s and 20 of the apartments will be reserved for veterans in need of support.



Meanwhile, in Banbury, Oxfordshire, the first phase of construction work at Bromford's new £12m retirement living complex is nearing completion. And in Wallingford, Season Senior Living's Millcroft offers a collection of spacious apartments are complemented by stunning communal areas, a bar, cinema, lounges and salon/spa, garden and are very much a part of the local community.

In Tonbridge, Kent, Rosewell House is round the corner for completion. The extra care scheme managed by Rapport Housing & Care will offer 59 one- and two-bed apartments with 24-hour care, tailored to residents' individual needs.



Rogallo Place, Medway

Another scheme due to be open this year is Rogallo Place extra care, located between Rochester and Chatham, also in Kent. Run

by Optivo, the scheme will feature 63 spacious apartments available for rent or shared ownership, due to open in July 2018. All apartments are self-contained with a full wet room, fitted kitchen and large lounge and residents have access to an on-site 24-hour care team.

And in Henley, McCarthy & Stone-led Albert Court is being constructed on the site of a former garage site. The plans identify 54 flats with staff

providing round the clock care for elderly and disabled people. 22 of these flats are 'affordable', with on-site communal lounge, bistro-style restaurant and landscaped gardens.

In Winchester, Chesil Lodge extra care scheme is nearing completion. The development will feature 52 homes let by Hampshire Home choice, for people aged 55 and over with an existing or potential care need.

A contract for a new extra care scheme in Southampton has been approved by the City Council for what will be the largest in the city. First Wessex are acting as the council's development agent for the scheme that will provide 84 homes

within a Housing with Care facility. Two-thirds of the homes will be one-bed apartments and one-third two-bed apartments.

Also on offer will be 15 general needs apartments for over-50's, nine of which will be one-bed; the other six will be two-bed.



Artist's view of Potters Court, Southampton

Lastly, work is due to start shortly on a new extra care housing scheme in Romsey, Hampshire. Comprising of 54 one- and two bedroom affordable housing flats for both rent and shared ownership, the development marks a partnership of developments between Ashley House PLC and Hampshire County Council.

East of England

The Housing LIN presented at the East of England LGA and Eastern ADASS joint conference on 21 November 2017 which brought together delegates to address how we develop an integrated and transformative approach to preventing and minimising the need for care.

There was a common theme throughout the day around the need for a system-leadership approach to prevention, delivered through closer partnerships between local authorities (including districts in two-tier areas), the health service, housing providers and the voluntary and community sector, alongside a recognition that the benefits and the costs of preventive approaches be shared. All the presentations from the event are available at:

<https://goo.gl/BEX1Ws>

Next Eastern Region Meeting: What's Next For Older People's Housing?

Northstowe Healthy New Town, 17th May 2018

The financial and demographic challenges facing housing, health and adult care are well documented. When planning major future housing developments, what can older people's housing contribute and what opportunities will maximise the benefits from the investment?

Northstowe is the only Healthy New Town development in the Eastern Region. It offers a unique opportunity to review older people's housing at scale and include innovative approaches to support wellbeing, community cohesion and



reduce pressures on stretched services. In-depth community-needed analysis and focus groups with older people, working with Hallam University, will offer an in depth perspective of future housing and care service needs. We hope that some members of the focus group will be able to come along and give their views on the day.

The Housing LIN is very grateful to the Northstowe Healthy New Town and South Cambridgeshire Council for providing the opportunity to share the knowledge gained from this detailed collaborative project approach with its older people. We hope to be able to develop the ideas and innovations across the region.

We will also be looking at exemplar planning and design practice with the help of Sheffield University and Thurrock Council and potentially other contributors. There will also be plenty of opportunities for delegates to contribute their own knowledge and expertise. We look forward to seeing you in May.

Presentations from the recent South Essex Housing Conference are available at: <https://goo.gl/Vy1rMu>
The area is a lead growth area for the eastern region and is committed to integrated service delivery.



Cornell Court, Saffron Walden

And finally, in Saffron Walden, L&Q Living's 40 flats for affordable rent by people aged 55+ with a care need at Cornell Court have been penned in for opening in summer 2018. Also available

are 33 flats for shared ownership with facilities including activity rooms, hair salon, green spaces and assisted bath.

West Midlands

Copies of the presentations given at the WM Housing LIN meeting held at ExtraCare Charitable Trust's Longbridge Retirement Village can be found on our events page: <https://goo.gl/nSgdbW>
And as reported earlier, we have also published a case study by Nicol Thomas architects on the regeneration of the site. Visit: <https://goo.gl/Uch9aE>

Residents from School Gardens in Bromford were given a taste on what will be on offer at their new multi-million pound development in Stourport. The residents were taken on a tour to a similar

village in which they were given a sneak peak of retirement life. Designed by Nicol Thomas architects, the scheme will feature 60 high-quality apartments for people aged 55 and over as well as a café bistro, lounge, activity studio, gym and hair and beauty salon, due to open in spring 2018.

More at: <https://goo.gl/d3jVbp>

And in Wolverhampton, McCarthy & Stone's new extra care scheme in Tettenhall features 29 modern one-bed apartments and 28 two-bed assisted-living apartments in Tettenhall, Wolverhampton.



Berrington Court, Kidderminster

And lastly, based within The Community Housing Group's flagship Extra Care scheme Berrington Court, Kidderminster, Worcestershire Telecare have

opened their new interactive apartment designed to 'highlight how innovative connected care technology is transforming independent living'. Showcased is a range of solutions that can help improve service quality through the use of advanced assistive technologies.

East Midlands

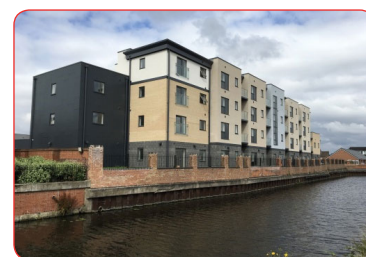
Thanks to East Midlands Housing Group for hosting our regional meeting at Waterside Court in Loughborough.

Presentations are now available on our website: <https://goo.gl/1719Nn> Our next meeting will take place on 2 May. Watch out for details!

In Leicestershire, Blaby District Council has been selected as a shortlisted finalist in the Public/Public Partnership category in the 2018 LGC Awards for the Lightbulb project. Lightbulb has now been fully rolled out supports vulnerable people to ensure they can live in their homes as safely as possible. The project has already been a success, with analysis on 357 patients experiencing improved



Residents of School Gardens at Beacon Park Village, Lichfield



Waterside Court, Loughborough



Delegates from the Lightbulb Project at the LGC Awards

care and an 84 percent reduction in NHS costs, worth up to £550,000 in savings over a one-year period. As a result of Lightbulb's work so far, a reduction of just one fall for every 17

residents saves the local health and care economy £21,000 per year. For more info, read the Housing LIN case study on the Lightbulb Project:

<https://goo.gl/JyuAjh>

And lastly, in Buxton, Derbyshire Housing & Care 21 are holding an Information Event at their new Extra Care Court, Thomas Fields. The scheme has 53 two bedroom apartments for outright sale, shared ownership and rent, and an on-site care team 24/7 with tailored care and support.



Thomas Fields, Buxton

Yorkshire & Humber

Our Yorkshire & Humber regional network met in Leeds in November last year and the presentations are now available on our website at:

<https://goo.gl/PyKSUK>

In other news, York City Council are proposing to cater for the city's ageing population by maximising the use of two existing Sheltered Housing with Extra Care schemes within the city. It will be increasing the support available at the schemes by making them more accessible for people with higher care needs. Furthermore, construction is nearly complete for the £4m, 27 home extension to Glen Lodge, providing dementia ready accommodation at this council-run Extra Care scheme



Derwenthorpe, York

Derwenthorpe Phase One housing development, an extra care scheme situated close to York, has been named the best sustainable building at the AJ Architecture Awards.

Designed by Studio Partington architects for the JRHT, it is one of the first large scale low-carbon communities in Northern England, seeking to create a mixed tenure, exemplar community of energy efficient homes.

Another gong has been celebrated in the Yorkshire & Humber region, as Burley Dementia Action Group have been awarded the Dementia Friendly Community of the Year category at the annual National Dementia Friendly Awards. The group provide a range of services for people living with dementia and looks to reduce the stigma of dementia by increasing understanding and awareness through activities such as Dementia Friends sessions and work with community organisations.

And in Brighouse, Brewster Bye Architects have submitted a planning application for a site which they hope will provide 65 new extra Care apartments on behalf of Home Group.

Wales

The Housing LIN Cymru sponsors' symposium took place in November last year in Newport. Copies of all the presentations are now available at:

<https://goo.gl/6LQKj3>

In Bridgend, residents are being invited to suggest a name for a new local extra care development by Linc Cymru in Ynysawdre. The scheme will have 45 apartments for older and vulnerable people and the local community.



Work on site in Bridgend

It doesn't stop there with community involvement in Wales. Seiriol Ward Adult Services have begun an engagement campaign to engage with local people from Seiriol ward to discuss the possibility of Extra Care Housing in the area. The authority wanted to hear thoughts on locals opinions on the development of a minimum of 39 extra care self-contained flats.

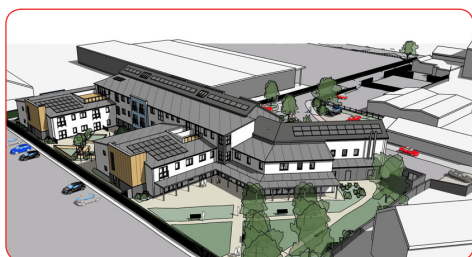
And on the development front, the go-ahead has also been given for plans of a 66-bed extra care housing development on the site of a former primary school in Holywell, Flintshire. The Wales and West Housing Association development will provide 44 one-bed apartments and 11 two-bed units.



In Porthmadog, the £7.5m Hafod Y Gest Extra Care scheme is set to be completed. Owned by Gwynedd Council, 40 extra care apartments and communal facilities will be provided, including; commercial kitchen and dining room, hairdressing salon, guest apartments, rooftop conservatory and reception and lounge areas.



Primary school pupils visiting the site of the new scheme in Porthmadog



Plan for the new scheme in Holywell

The go-ahead has also been given for plans of a 66-bed extra care housing development on the site of a former primary school in

Holywell, Flintshire. The Wales and West Housing Association development will provide 44 one-bed apartments and 11 two-bed apartments, backed up by 24-hour on-site care and support for adults.

In other news, CHC have published a report on a long term vision for housing associations in Wales. This vision will position housing associations as a partner of choice and an integral part of the solution to the housing crisis.

Read at: <https://goo.gl/PX9S9e>

A new study from Care & Repair Cymru led by health data scientists at Swansea University Medical School, will investigate how home modifications and repairs can help to improve the lives of older homeowners. We look forward to reporting on the findings. <https://goo.gl/RoVq76>

And a National Assembly for Wales Health, Social Care and Sport Committee report looks into the extent and impact of loneliness and isolation experienced by people in Wales.

<https://goo.gl/zWgLk9>

And finally, a network of 19 health and care centres across Wales costing £68m has been announced-bringing NHS and community services together under one roof. The plans will feature 11 new hubs and GP centres, and includes the development of an assisted living scheme proposed for Llanelli.

Scotland

Age Scotland, the Scottish Older People's Assembly, Castle Rock Edinvar, and McCarthy & Stone have joined forces to launch the Older People's Housing Coalition to put older and disabled people's housing needs at the centre of the planning system.

On the development front, a 'first-of-its-kind' bespoke retirement village is off the blocks in Aberdeenshire.

Developed by Liberty Retirement Living, the site at Chapelton will house self-



New development in Aberdeenshire

contained apartments as well as a range of one and two-storey cottages following a site acquisition deal. Check out our #InspirationalAchievements webpage for more information at:

<https://goo.gl/tcFuWF>

Plans have also been submitted for a new 'retirement village' containing 252 homes and an 80-bed care home in Newton Mearns in East Renfrewshire. The development will feature a 'multi-purpose village centre' and full supporting facilities and amenities.

In rural Lewis, Comhairle nan Eilean Siar – part of the Hebridean Housing Partnership – are undertaking a feasibility of developing 16 extra care homes somewhere in rural Lewis — with four potential sites under consideration as part of an initial options appraisal.

Scottish housing and care specialist Blackwood has launched its annual search to find the brightest and best new innovations to help those with disabilities. The Blackwood Design Awards seek to celebrate the brilliant new designs, technologies and adaptations which help people with disabilities to live life to the full. Entries are invited from anywhere in the world, and should be submitted no later than 12 noon on Friday, March 30.

And finally, CIH Scotland's second phase of its housing and dementia programme focuses on improving the links between housing organisations and partners in health, social care and the third sector. Read more at: <https://goo.gl/cFYFWd>





HOUSING LIN REGIONAL EVENTS

Check our online events page to register your attendance on a 'first come, first serve' basis for our forthcoming regional events:

www.housinglin.org.uk/Events/ForthcomingEvents/

Eastern Housing LIN regional meeting,
Northstowe
17 May 2018

HOUSING LIN CONSULT

Underpinned by our highly prized learning and improvement ethos, we have crafted a range of consultancy services that can best help you and your organisation in a changing and challenging work environment.

To find out more visit:

<https://www.housinglin.org.uk/Consultancy/>

or email us to set up a conversation about your requirements:

consultancy@housinglin.org.uk

OTHER EVENTS SUPPORTED BY THE HOUSING LIN

Telecare for older people: are we getting the best out of it? - King's College London
London

21 February 2018

More information at: <https://goo.gl/mMEo98>

ODESSA Project End of Award Conference
Sheffield

23 February 2018

More information at: <https://goo.gl/BhfGkJ>

Natural Connections: innovative approaches to green care for people living with dementia
Worcester

26 April 2018

More information at: <https://goo.gl/bNyA5p>

PROFILE YOUR WORK

If you have promotional material, articles or features you would like us to consider for future editions of *Housing with Care Matters*, please send information to:

info@housinglin.org.uk

We welcome your contributions.

We do not accept responsibility for the availability or reliability of the items of content included in this newsletter and their inclusion is not an endorsement of any views that may be expressed.



ABOUT THE HOUSING LIN

The Housing Learning and Improvement Network (LIN) is a sophisticated network bringing together housing, health and social care professionals in England and Wales to exemplify innovative housing solutions for older people and vulnerable adults.

We welcome items for consideration in our next issue. Drop us an email with your news to:

info@housinglin.org.uk

We are grateful to Keepmoat for their support of *Housing with Care Matters*



Housing Learning & Improvement Network
c/o EAC, 3rd Floor, 89 Albert Embankment
London SE1 7TP

© Housing Learning & Improvement Network

Tel: 0207 8208077
Email: info@housinglin.org.uk
Web: www.housinglin.org.uk
Twitter: @HousingLIN & @HousingLINews