



# Housing with Care Matters

020 7820 8077  
info@housinglin.org.uk  
www.housinglin.org.uk  
@HousingLIN  
#HLINenews

E-news from the Housing Learning & Improvement Network

- 2 Policy & Funding News
- 3 Market News
- 4 New Housing LIN Publications
  - ECH briefing on post-Dilnot care reform
  - Viewpoints:
    - Future perfect designs
    - Incentives for downsizing
    - Housing and public health
  - Case Studies:
    - East Sussex ECH case study
    - HAPPI Hackney
    - Self help & dementia
    - Plymouth's older people charter
- 6 Other useful resources
  - On housing and ageing
  - On health and social care
  - On housing and dementia
- 9 Telecare Update
- 10 Research News
- 10 Calls for Information
- 11 Regional Highlights
- 15 Regional Meetings / Events
- 15 Housing LIN Conference
- 15 Other Events
- 15 RIP John Penton
- 15 Poetry corner



Housing Minister, Kris Hopkins MP meets FirstStop & Housing LIN


## HOUSING LIN ANNUAL CONFERENCE TAKING SHAPE

With anticipation that the announcement of Phase Two of the Care & Support Specialised Housing Fund is imminent, the date for the Housing LIN annual conference has now been set for Tuesday, 18 February 2014. Registration arrangements for the 300 free places, on a first come, first served basis, will be announced later this month.

The focus of the day is *Extra care housing and dementia: learning today, leading tomorrow* and we are delighted to advise that we have secured a number of highly distinguished keynote speakers and industry leaders, along with exhibition space and opportunities for what we do best, networking! Speakers include: Lord Filkin, Professor Anthea Tinker, Jeremy Hughes, and John Mathers.

We are also grateful to our sponsoring partners for enabling us to put on this high profile event for the 3rd year in a row. Without their continued support, it would not be possible to hold our showcase conference. We look forward to a successful event and hope that many of you can join us on the day.

We will be uploading details of how to book a place in an email alert on **Monday, 23 December 2013** and also encourage you to follow us on Twitter @HousingLIN #HLINconf2014. Don't miss out. Check your Housing LIN login details to make sure you are registered to receive our e-alerts.

And finally, Season's Greetings to our readers! 

We are grateful to Willmott Dixon for their support of this issue of *Housing with Care Matters*



## POLICY & FUNDING NEWS

*Policy and funding news across housing, health and social care since our last newsletter includes:*

### Autumn Statement 2013

The media headlines from Chancellor George Osborne's autumn statement revolve around the increase in state retirement age. However, there were some references to housing and care including:

- £1bn in loans to unlock housing developments
- the Housing Revenue Account borrowing limit to rise by £300m as part of the Local Growth Fund and routing other funding via LEPS
- Councils to invest in rundown urban housing estates through council house sales
- a new priority right to move for social tenants who need to relocate for a job
- the government will consult on a new 10 unit threshold for section 106 affordable housing contributions (to reduce costs for smaller builders), and
- making sure pooled funding is an enduring part of the framework for the health and social care system beyond 2015-16

We will be watching out for further funding announcements, with the HCA's Affordable Housing Programme due to be published this month too.

For more on the Autumn Statement, go to:

<https://www.gov.uk/government/topical-events/autumn-statement-2013/about>

### More dedicated support services to help older people live independently

The DCLG has announced that £1m has been made available to support 15 new locally dedicated support services across the country. Opening one of the new services in York, Housing Minister Kris Hopkins MP said the new local FirstStop services will give up to 10,000 older people a helping hand to stay independent and make choices about where and how they live in later life. More at:

[www.gov.uk/government/news/government-funding-to-help-10000-older-people-stay-independent](http://www.gov.uk/government/news/government-funding-to-help-10000-older-people-stay-independent)



*Kris Hopkins MP at Auden House in York*

### Phase One Knowledge and Information Exchange

The HCA and GLA have updated their website and, as set out in the CASSHF prospectus, now advised successful Phase One care and support providers and their partners that they are expected to register with the Housing LIN in order to participate in local knowledge and information exchange opportunities. For further details, go to: [www.homesandcommunities.co.uk/ourwork/care-support-specialised-housing-fund](http://www.homesandcommunities.co.uk/ourwork/care-support-specialised-housing-fund)

### Integrated care pioneers announced

Norman Lamb, Minister for Care Services, announced last month details of fourteen areas that will lead the way in delivering better coordinated person-centered care and support.



*Norman Lamb MP*

They are: Barnsley, Cheshire, Cornwall and Isles of Scilly, Greenwich, Islington, Leeds, Kent, North Staffordshire, North West London, South Devon and Torbay, Southend, South Tyneside, Waltham Forest and East London and City, and Worcestershire. The Housing LIN is delighted to be a pioneer 'partner' and working with individual sites, NHSIQ and NHS England to support learning and improvement. It's in our name! More on all the pioneering projects at:

[www.gov.uk/government/news/integration-pioneers-leading-the-way-for-health-and-care-reform--2](http://www.gov.uk/government/news/integration-pioneers-leading-the-way-for-health-and-care-reform--2)

And speaking at the official launch of the integration pioneers, the Care Services Minister has announced that the Integration Transformation Fund is to be called the Better Care Fund.

### HCA announces custom-build sites

Four additional HCA sites have been identified for custom build (self-build) development which will bring the total number to a dozen. Whilst not older people specific, there is growing interest in co-housing solutions amongst older people and on the continent there are examples of such development being sparked by groups of older people.

For an example in Berlin, view the 'building groups' programme showcased at:

[www.selfbuildportal.org.uk/berlin-building-groups](http://www.selfbuildportal.org.uk/berlin-building-groups)

For a selection of Housing LIN papers on co-housing visit: [www.housinglin.org.uk/cohousing](http://www.housinglin.org.uk/cohousing)

And for details from the HCA, visit:

[www.homesandcommunities.co.uk/ourwork/custom-build](http://www.homesandcommunities.co.uk/ourwork/custom-build)



### Health Select Committee on Long Term Conditions

The Health Committee has recently heard evidence on how the NHS and social care system in England supports people with long-term conditions. Its wide ranging inquiry included a focus on:

- The implications of an ageing population for the prevalence and type of long term conditions, together with evidence about the extent to which existing services will have the capacity to meet future demand
- Current examples of effective integration of services across health, social care and other services which treat and manage long-term conditions
- The readiness of local NHS and social care services to treat patients with long-term conditions (including multiple conditions) within the community

To watch the evidence session, go to:

[www.parliament.uk/business/committees/committees-a-z/commons-select/health-committee/news/13-10-24-ltc-ev3](http://www.parliament.uk/business/committees/committees-a-z/commons-select/health-committee/news/13-10-24-ltc-ev3)

### Cold Weather Plan for England 2013



Public Health England have published the above plan, 'Protecting health and reducing harm from cold weather', which updates the 2011 framework and incorporates the changes in the NHS and public health landscape. With reference to the impact of poor housing on health inequalities,

it recommends a series of steps to reduce the risks to health from cold weather for the NHS, local authorities, social care, and other public agencies.

Read at: [www.gov.uk/government/uploads/system/uploads/attachment\\_data/file/252838/Cold\\_Weather\\_Plan\\_2013\\_final.pdf](http://www.gov.uk/government/uploads/system/uploads/attachment_data/file/252838/Cold_Weather_Plan_2013_final.pdf)

### More winter pressures money

With ONS data revealing that there have been 25,600 excess winter deaths amongst the over 75s, a further £150 million will be distributed around England to help hospitals maintain their A&E services over winter 2013-14 in addition to the £250 million targeted to the most at-risk areas in September 2013 to maintain services and reduce the pressure on A&Es caused by cold weather. The money will be paid as an additional allocation to 157 CCGs. Details at:

[www.england.nhs.uk/2013/11/22/150mill-wntr-press](http://www.england.nhs.uk/2013/11/22/150mill-wntr-press)

### A new benefit for disabled people replaced DLA

Disability Living Allowance (DLA) has been fully replaced by Personal Independence Payment (PIP) for people aged 16 to 64 from 10 June 2013 for new claims only (Phase One). From 28 October 2013, the Department of Work and Pensions has now started to reassess existing DLA claimants in West & East Midlands, East Anglia and Wales only (Phase Two). However, no date has yet been given for the implementation of phase two across the remainder of the UK. More on PIPs at:

[www.gov.uk/government/publications/the-personal-independence-payment-toolkit-for-partners/the-personal-independence-payment-pip-toolkit-for-partners](http://www.gov.uk/government/publications/the-personal-independence-payment-toolkit-for-partners/the-personal-independence-payment-pip-toolkit-for-partners)

## MARKET NEWS

*In this new section we capture latest news affecting the world of housing with care. For local information on extra care housing developments, check out regional updates.*

### Adult Social Care Outcomes

You can now access comprehensive data on outcomes for adult users of local authority funded social care and support, including carers, for each local authority area with social care responsibility on the Health & Social Care Information Centre H&SCIC website. We are looking at ways in which we can integrate this into our SHOP@ analysis tool but, in the meantime, measurements that may be of interest include: people receiving direct payments, admissions into care homes, delayed discharges, etc. View at: <http://ascof.hscic.gov.uk>



And other H&SCIC news shows that the number of hospital admissions rose by 0.8% to 15.1m in 2012/13, with a disproportionate increase in the number of people over 75 (4.2m).



## UK population projected to reach 73.3m

Figures released by ONS show that by 2037, 16.1m people in the UK will be eligible for a state pension and the number of people aged 80 and over is projected to more than double to 6 million by mid-2037. More at:

[www.ons.gov.uk/ons/rel/npp/national-population-projections/2012-based-projections/stb-2012-based-npp-principal-and-key-variants.html](http://www.ons.gov.uk/ons/rel/npp/national-population-projections/2012-based-projections/stb-2012-based-npp-principal-and-key-variants.html)

(Also, see next column for info on our briefing on the impact of proposed changes to care funding)

## The macro-economic impact of equity release

Research by Oxford Economics for Just Retirement's Equity Release Research Centre reveals that pensioners' income is likely to decline, forcing many into poverty. Just Retirement's research further suggests that equity release could potentially raise some 1.09m pensioner

households out of poverty for a year between 2012 and 2040 and between 3.8m and 22.8m customers could further benefit if they took out a drawdown product of £5,000 for 12 years. Further market analysis is available at: [www.erresearchcentre.org/research/future-equity-release-research](http://www.erresearchcentre.org/research/future-equity-release-research)

## Housing Market Bulletin

The most recent HCA's Housing Market Bulletin is available and provides details on house prices, house building, mortgages and the wider economy. View at: [www.homesandcommunities.co.uk/ourwork/market-context](http://www.homesandcommunities.co.uk/ourwork/market-context)

And finally, the DCLG have published data on the supply of affordable housing in England. This can be found at: [www.gov.uk/government/collections/affordable-housing-supply](http://www.gov.uk/government/collections/affordable-housing-supply)

**Affordable Housing Supply: April 2012 to March 2013 England**

**Key findings:**

- A total of 41,300 affordable homes were provided in England in 2012-13, a decrease of 20 per cent compared to the 51,700 provided in 2011-12.
- The number of homes delivered in the social rented sector, including social and affordable rented homes, decreased 19 per cent from 38,800 in 2011-12 to 32,400 in 2012-13.
- A total of 12,200 new homes were delivered through intermediate housing schemes, including intermediate rent and affordable rent schemes, in 2012-13, a 48 per cent decrease from last year.
- There were 24,800 new build affordable homes provided in 2012-13, a 20 per cent decrease from the 31,000 built in 2011-12. New build homes represented 60 per cent of all affordable homes provided in 2012-13 compared to 55 per cent of total supply in 2011-12, the highest percentage reported since before 1991-92.
- In 2012-13, 86 per cent of new affordable home delivery was reported by the HCA or the GLA, a reduction from 89 per cent in 2011-12. Over this time period, the total number of affordable homes reported by the HCA or the GLA has decreased to around 30 per cent.

**Table of Contents:**

- Introduction 1
- National trends 1
- Affordable home ownership 2
- New build and acquisition 6
- Social rented 6
- Intermediate rented 9
- Intermediate rent 12
- Technical notes 12
- Appendix 13

**Responsible Statisticians:**

Senior Statistician: Statistical enquiries: 0203 444 1991  
 Office hours: 0203 444 1991  
 Media Enquiries: 0203 444 1991  
 Date of next publication: October 2014

# NEW HOUSING LIN PUBLICATIONS

*Keeping you informed on latest policy, practice and thinking, we are pleased to bring you an excellent selection of new and diverse publications from the Housing LIN.*

## NEW BRIEFING

*This month, the Housing LIN puts future funding of care under the spotlight. We are pleased to publish the following members' briefing:*

### Impact of changes to social care funding/charging on extra care housing post-Dilnot

This new briefing written by Margaret Edwards, with contributions from Housing LIN members, considers the impact that the proposed new care funding system will have on housing choices made by older people, including extra care housing. The key question addressed in the paper is what effect, if any, will the new system have on the demand by older people for extra care housing? It seeks to anticipate whether the new funding system contains financial incentives or disincentives to make particular choices.

It is not intended to be guidance for commissioners and providers but summarises what is known about proposed systems, highlights issues and suggests how different stakeholders may behave. Available at: [www.housinglin.org.uk/ECHpostDilnot\\_Briefing](http://www.housinglin.org.uk/ECHpostDilnot_Briefing)

## NEW VIEWPOINTS

*We are pleased to bring you three new viewpoints. The first looks at mainstreaming design for an ageing population; the second, is a personal account of planning for retirement and the third offers insight into housing and public health partnerships.*

### Future perfect – designer labels for an ageing society

In recent months, the Housing LIN has published a selection of resources that consider in detail the built environment and the physical design criteria that can meet the housing needs and lifestyle choices of older people. However, in this thought-provoking viewpoint, Philippa Aldrich, founder of The Future Perfect Company, takes a wider look at designing for inclusion and, in particular,



how by focussing on clever, accessible design, this too can accommodate the needs and aspirations of older people. In short, what is required is for designers to focus on the ageing population but not to produce products solely

for older people. Read in full at:

[www.housinglin.org.uk/FuturePerfect\\_Viewpoint](http://www.housinglin.org.uk/FuturePerfect_Viewpoint)

And if you found this viewpoint of interest, the deadline for applications to the International Design for All Foundations awards is 3 January 2014. More at: [www.designforall.org/new/awards.php](http://www.designforall.org/new/awards.php)

### Incentives for downsizing - oiling the wheels of the housing market system

At a time when government is creating 'entry level' incentives to encourage people into homeownership under the 'Help to Buy' scheme, should we also be looking at a range of incentives to help older people downsize to free up much needed larger accommodation?

Recent think tank papers and media interest have suggested that the lack of housing choice is a turn-off for older people looking to downsize. In this viewpoint by Bob Line, we look at how the housing market can gear itself up to assist "downsizers" and the types of financial instruments that could potentially incentivise timely moves. Available at: [www.housinglin.org.uk/DownsizingIncentives\\_Viewpoint](http://www.housinglin.org.uk/DownsizingIncentives_Viewpoint)

### Under one roof? Housing and public health in England

What is the case for housing as a keystone of local public health strategies across England in the next year? Following its move into local government, what is the state of play in linking the two sectors, and how can we strengthen such partnerships to improve health and wellbeing?

With an increasing focus on integration, this viewpoint by Ed Harding sets out to develop a rapid initial assessment of these questions, and highlights important issues facing housing and public health to stimulate further debate, drawing on the thoughts of leading commentators from both public health and housing sectors in order to shape healthy homes and communities. Read at: [www.housinglin.org.uk/PublicHealth\\_Viewpoint](http://www.housinglin.org.uk/PublicHealth_Viewpoint)

## NEW CASE STUDIES

*In this issue, we offer four contrasting case studies. The first is a "game changer" in how local authorities can manage extra care housing to maximum impact; the second builds on our series of HAPPI case studies and follows a new London development; the third focuses on dementia to coincide with the G8 summit; and the fourth one captures the essential ingredients of Plymouth City Council's Older Peoples' Charter.*

### The Business Case for Extra Care Housing in Adult Social Care: An Evaluation of Extra Care Housing schemes in East Sussex

This important new case study from the Housing LIN provides a synthesis of the detailed evaluation of extra care housing schemes undertaken by East Sussex County Council to inform future decisions related to financial investment in extra care housing. In particular, to ascertain whether extra care housing:

- acts as a preventative model, supporting independence and avoiding admissions into residential care; and
- is a more cost effective model of care delivery than other models, including residential care and care in the community.

The resultant findings reveal that the financial impact was considerable with the evaluation indicating that the cost of extra care housing was on average half the gross cost of the alternative placements. This has given pause for thought about the future strategic direction of extra care housing and has helped inform growth plans. View at: [www.housinglin.org.uk/EastSussex\\_CaseStudy](http://www.housinglin.org.uk/EastSussex_CaseStudy)

### A HAPPI partnership – delivering quality housing for older people in Hackney

This new case study for the Housing LIN, by Julia Park and Irene Craik at Levitt Bernstein Architects, examines the HAPPI principles applied at Buccleuch House, a 41 home purpose-built apartment scheme for older people in Clapton Common, Hackney. Developed by Hill Residential for Hanover and Agudas Israel Housing Associations, the scheme is an interesting development integrated within a larger mixed apartment block. More at: [www.housinglin.org.uk/BuccleuchHouse\\_CaseStudy](http://www.housinglin.org.uk/BuccleuchHouse_CaseStudy)



*Buccleuch House, Hackney*



## Doing it for ourselves: Self-help groups for people with dementia living in extra care housing schemes

This case study, funded by the JRF, showcases interim findings from the Mental Health Foundation's on-going evaluation of three peer support groups for people in the early stages of dementia living in three Housing 21 extra care housing schemes. Published to coincide with the G8 dementia summit, it highlights the groups as a promising approach for reducing social isolation, increasing social networks and improving wellbeing for participants. A full report is due this Spring. In the meantime, to find out more, visit:

[www.housinglin.org.uk/SelfHelpDementia\\_CaseStudy](http://www.housinglin.org.uk/SelfHelpDementia_CaseStudy)

## A Charter for Older People in Plymouth: Making a commitment to older people when they need care or support

This case study by Claire Hodgkins at Plymouth City Council captures the work undertaken by Plymouth City Council's Adult Social Care department with partners and groups of older people within the city to develop a Charter made up of a series of 11 pledges, including: access to good information; support to access the right service; opportunity to shape services; and support when I need to care for someone. Launched in 2012, the Charter outlines the standards and approaches to service delivery that older people should enjoy and the lessons learnt one year on. Read in full at:

[www.housinglin.org.uk/PlymouthCharter\\_CaseStudy](http://www.housinglin.org.uk/PlymouthCharter_CaseStudy)



The resultant report for the JRF by Imogen Blood provides a comprehensive overview of the programme. Furthermore, the findings stress: challenging ageism; mutually supportive communities; meaningful relationships; mutuality and reciprocity; the voices of older people with high support needs; openness to radical, innovative approaches; and how often simple changes can improve lives.

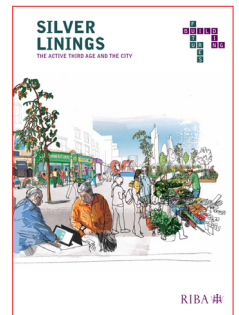
Importantly, at its core, the report is about respecting older people as citizens and the need to develop more choice and greater voice through innovative co-production techniques and delivering person-centred outcomes. To read in full, go to: [www.jrf.org.uk/publications/better-life-valuing-our-later-years](http://www.jrf.org.uk/publications/better-life-valuing-our-later-years)

To coincide with the launch of the above earlier this week, The Guardian online ageing population partner's network has published Jeremy Porteus' blog at:

<http://gu.com/p/3yv3p/twJP>

## Silver Linings – The Active Third Age and the City

This new RIBA Building Futures report illustrates six future scenarios in which 'active Third-Agers' have made a huge impact on our towns and cities. Surprisingly, whilst not directly referencing HAPPI, each possibility has been explored to inspire ideas and provoke debate about what could be the innovations that shape the built environment of the future? It argues that by 2040, the over 60 'active Third-Ager' will have substantially greater economic, social and political power and cities will need to adapt to house this greater proportion of older people. View at: [www.architecture.com/TheRIBA/AboutUs/InfluencingPolicy/BuildingFutures/silverlinings.aspx/#.Um-K8ChqpiE](http://www.architecture.com/TheRIBA/AboutUs/InfluencingPolicy/BuildingFutures/silverlinings.aspx/#.Um-K8ChqpiE)



## OTHER USEFUL PUBLICATIONS / RESOURCES

### HOUSING FOR OLDER PEOPLE

*In this section we bring you details on other new resources on a range of themes related to ageing, and housing for older and disabled people.*

#### A Better Life: Valuing our later years

In 2009, JRF launched the five-year, £1.5 million programme called 'A Better Life' to explore what can help older people with high support needs to improve their quality of life (and what 'quality of life' means for them) now and in the future.

#### Accommodating our extended middle age

This paper by Lord Best is the final contribution in the Hanover @50 debate and pulls together the overarching conclusions from these nine innovative think pieces and makes a number of important recommendations to challenge society, government and the sector on address the future housing, care and support for our ageing population.



Commissioned by Hanover Housing Association to coincide with their 50th anniversary, all the papers can now be found in their accompanying book, 'Perspectives on Ageing and Housing'. To view all the papers, visit:

[www.hanover.org.uk/the-ageing-society-is-not-all-about-being-old-and-frail-2013-it2019s-mostly-about-an-2018extended-middle-age2019](http://www.hanover.org.uk/the-ageing-society-is-not-all-about-being-old-and-frail-2013-it2019s-mostly-about-an-2018extended-middle-age2019)

### Space to live; how shared ownership can transform the lives of disabled people

With the announcement on the HCA's affordable housing programme due shortly, a new policy



briefing from Advance is calling for the HCA to ensure the HOLD (Home ownership for people with long term disabilities) shared ownership programme remains an option for disabled people beyond 2015; and a cross-governmental summit to highlight the benefits of shared ownership for disabled people and how many more

people can benefit from its life-changing impact. Copies of the briefing are available for download from: [www.advanceuk.org/uploaded\\_files/1837/images/Space\\_to\\_live.pdf](http://www.advanceuk.org/uploaded_files/1837/images/Space_to_live.pdf)

### Building Comfort for Older Age: Designing and Managing Thermal Comfort in Low Carbon Housing for Older People

Between 2011 and 2013, a team of UK and French researchers studied energy consumption and thermal comfort of older people in their homes. The aim of the project was to understand how changing technologies and demographics are related to domestic thermal experiences. The team studied care homes, extra care housing developments, multi-occupancy houses, and single-occupancy houses to analyse how comfort is managed in a variety of settings.

The researchers found that comfort is influenced by a wide variety of social and technical factors. Occupants interact with heating controls in different ways and newer technologies can be a challenge to understand and operate. In addition, low carbon technologies often require different operating procedures and sometimes introduce issues of overheating if designed or operated improperly. The research team concluded it is possible to reduce energy use while improving comfort conditions. However, it is essential to engage occupants, carers, building managers, installers, and building designers in the management of comfort conditions.

To receive a 16-page briefing report on the study findings, please send an email with your name and address to Andrew Karvonen at:

[buildingcomfort@creativeconcern.com](mailto:buildingcomfort@creativeconcern.com) or visit: [www.sed.manchester.ac.uk/research/marc/conditioningdemand](http://www.sed.manchester.ac.uk/research/marc/conditioningdemand) to find out more.

## HEALTH & CARE

*This section features new papers that have a connection across housing, health and/or social care.*

### Health begins at Home

This pamphlet provides interim results at 6 months from a fascinating Family Mosaic research project being undertaken by the London School of Economics. It seeks to measure and test out the impact of their services, both as a social landlord and as a provider of housing-related care and support services, and ways in which they can improve the health and wellbeing of residents whilst at the same time help reduce NHS costs in the areas they operate in. Initial findings suggest an annual saving of £860,000 to local health economies for the 600 participants alone! More at: [www.housinglin.org.uk/pagefinder.cfm?cid=8994](http://www.housinglin.org.uk/pagefinder.cfm?cid=8994)



### What price independent lives?

Disabled people are being hit hardest by the cumulative impact of the government's welfare reform policies, according to an important new Habinteg report.

'What price independent lives?', launched on the United Nations Day of Disabled People, highlights the combined effect of a range of benefit cuts on disabled people's incomes and the particular threat this poses to independent living. It shows that two thirds of Habinteg's tenants affected by the bedroom tax are disabled people. However, the impact of this is deepened when the same people face other benefit cuts and variable policies by local authorities. The result is that the ability for disabled people to pay the additional costs associated with living an independent life is being severely restricted. To view the findings and Habinteg's recommendations to repeal the bedroom tax and review wider welfare reform, visit: [www.habinteg.org.uk/whatpriceindependentlives](http://www.habinteg.org.uk/whatpriceindependentlives)

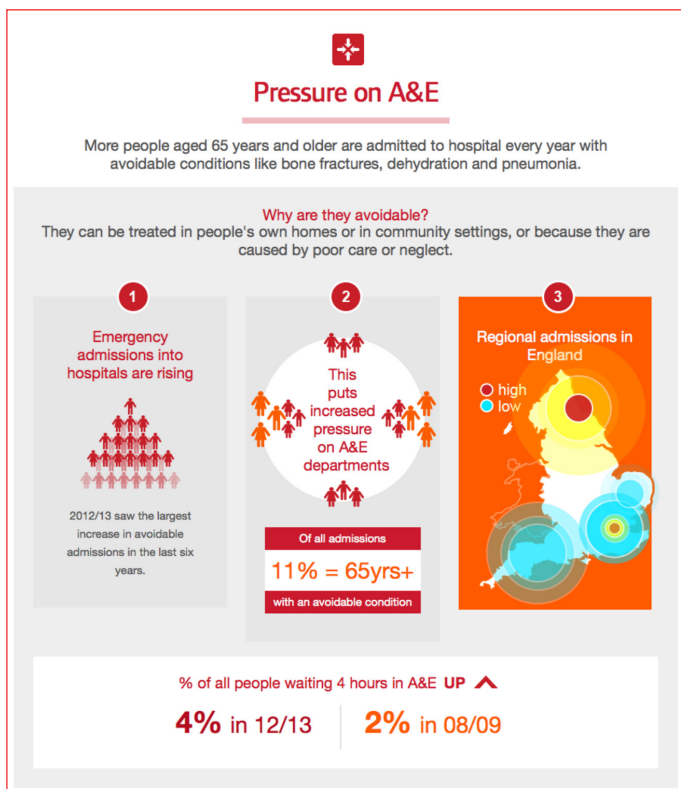




## The state of care report

The Care Quality Commission (CQC) has published expert analysis on the way people experience health and adult social care in England. Key findings reveal:

- More than half a million people aged 65 and over were admitted as an emergency to hospital with 'avoidable' conditions in the last year – including almost one in ten aged 75 and over (396,000 people)
- More than ten per cent of inspections of residential homes uncovered problems with either safeguarding and safety, staffing, or the care and support received by residents – for example, people not being helped to eat and drink enough
- More than 10% of home care agencies did not meet standards in staffing or monitoring quality
- People with dementia continue to have poorer outcomes in hospital



And finally, in delivering better person-centred coordinated care, it calls for the whole care system to provide good care for people within their own homes and local communities in order to avoid the need for people to go to hospital unnecessarily. Download at: [www.cqc.org.uk/media/cqc-publishes-fourth-state-care-report](http://www.cqc.org.uk/media/cqc-publishes-fourth-state-care-report)

## National Audit of Intermediate Care

Alongside the CQC report, a new report from the NHS Benchmarking Network calls for strategically planned and adequate intermediate care services locally and questions whether the current scale of intermediate care and the pace of change, particularly in admission avoidance, is sufficient to make an impact on reducing the use of acute hospital beds by frail older people. Interestingly, they estimate that of admissions into acute wards, 5.6% of patients resided in sheltered housing. Read in full at: [www.nhsbenchmarking.nhs.uk/CubeCore/uploads/icsurvey/NAIC%202013/NAICNationalReport2013.pdf](http://www.nhsbenchmarking.nhs.uk/CubeCore/uploads/icsurvey/NAIC%202013/NAICNationalReport2013.pdf)

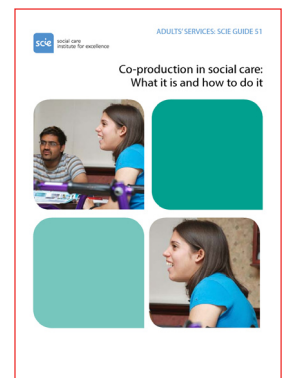


## Attitudes to Home Care in England

With a backdrop of the recent Leonard Cheshire Foundation report on 15 minute visits in the homecare sector, as reported in our last newsletter, market research by The Guardian for the Department of Health has found that more than 1,000 people stated the most important factor was either friendly, respectful, capable care workers; sufficient time for care; or choice about services, e.g. when visits happen, who visits and what care workers do. View results at: [www.gov.uk/government/news/homecare-survey-generates-ideas-to-help-improve-services](http://www.gov.uk/government/news/homecare-survey-generates-ideas-to-help-improve-services)

## Co-production in social care: what it is and how to do it

This new guide from the Social Care Institute for Excellence takes a detailed look at co-production and considers the way service users and carers working with service providers, commissioners and improvement bodies can adopt co-production approaches to improve people's lives. With references to the work of Keyring, Look Ahead Care and Support and the Northampton Community Housing Network, the guide is available from: [www.scie.org.uk/publications/guides/guide51/files/guide51.pdf](http://www.scie.org.uk/publications/guides/guide51/files/guide51.pdf)







## Winterbourne View

One year on from the review, the Winterbourne View joint improvement programme has published a stocktake of progress. In relation to housing, there is an example of good provider engagement in Telford & Wrekin but also reference to needing to help identify alternative forms of care provision, including the development of affordable, sustainable and appropriate housing options. See: [www.local.gov.uk/web/guest/adult-social-care/-/journal\\_content/56/10180/3912043/ARTICLE](http://www.local.gov.uk/web/guest/adult-social-care/-/journal_content/56/10180/3912043/ARTICLE)

## Housing and mental health

The Housing Association Charitable Trust (HACT) have launched a new programme on housing and mental health for NHS Trusts. For details about their recent seminars and a copy of a related briefing, go to: [www.hact.org.uk/mental-health](http://www.hact.org.uk/mental-health)

## Better support for LGBT people in later life

Housing 21 have produced new research which identifies the needs and aspirations of older LGBT (lesbian, gay, bisexual and transgender) people, and looks at how housing and care providers can make a positive impact on their lives. 'Improving the housing and care experiences of LGBT people in later life' can be found at: [www.housing21.co.uk/files/8913/8355/7629/lgbt\\_research\\_document.pdf](http://www.housing21.co.uk/files/8913/8355/7629/lgbt_research_document.pdf)

To view the Housing LIN viewpoint, 'Building a sense of community: Including older LGBT in the way we develop and deliver housing with care', go to: [www.housinglin.org.uk/pagefinder.cfm?cid=8754](http://www.housinglin.org.uk/pagefinder.cfm?cid=8754)

## HOUSING & DEMENTIA

*We are immensely grateful to Brunelcare who have agreed to support our housing and dementia webpages and Sue Garwood, our dementia lead, for the following items.*



### The Carers' Call to Action

If your organisation has contact with informal carers of people with dementia, do consider signing up to the Shared Vision of the Carers' Call to Action which was launched at the Dementia Action Alliance Annual Event. Aimed at achieving better support for the thousands of people caring for loved ones with dementia, more information can be found at: [www.dementiaaction.org.uk](http://www.dementiaaction.org.uk)

## DEEP website and guides

The DEEP (Dementia Engagement and Empowerment Project) project has just launched a number of guides, many of which will be useful to organisations on the journey to becoming more dementia-friendly, as well as to groups involving people with dementia. All have been co-produced with people who have dementia. Topics include: Find Tips for Employers; Writing Dementia-Friendly Information; and Recruitment and Selection at: <http://dementivoices.org.uk/resources/deep-guides/>

## The Living Well Handbook

The Living Well Handbook was developed in Gloucestershire by the local NHS, NHS Trusts and County Council in partnership with the Alzheimer's Society. It was inspired by people living with dementia who wanted one place to store essential information. It can be completed by - or with - individuals and their carers. The process of completing would be very helpful in getting to understand the person and developing person-centred support. Presented at the recent SW Housing LIN meeting (see Helen Vaughan's presentation), the handbook is now available at: [www.housinglin.org.uk/pagefinder.cfm?cid=8999](http://www.housinglin.org.uk/pagefinder.cfm?cid=8999)

## TELECARE UPDATE

*This section, supported by the Assisted Living Innovation Platform at the Technology Strategy Board, highlights relevant Telecare and Telehealth items that may be of interest to Housing LIN members*

### European Code of Practice for Telehealth Services, TeleSCoPE

As reported in October's Telecare LIN newsletter, the European Code of Practice for Telehealth Services was launched at the European Telemedicine Conference in Edinburgh in late October. The Code marks the culmination of work by partners to the European Commission funded TeleSCoPE project.

Led by Malcolm Fisk at Coventry University, the Code is concerned as much with promoting appropriate lifestyles and behaviours as it is with the improvement of clinical health. Of great significance is the definition of telehealth adopted within the Code. This doesn't focus on technologies



and equipment, it talks of health and wellbeing and of the way that people access and use services in ways that fit with their lifestyles and choices. More about the Code and accreditation arrangements at: [www.telehealthcode.eu](http://www.telehealthcode.eu)

### 3millionlives delivery plan by April

NHS England will publish a 3millionlives delivery plan for 2014-2017 by the end of March 2014. The organisation, which took over responsibility for the programme due to deliver telehealth and telecare to three million people by 2017, has "repositioned" the programme as 'Integrated Care for 3millionlives'. More at: [www.ehi.co.uk/news/EHI/9049/3millionlives-delivery-plan-by-april](http://www.ehi.co.uk/news/EHI/9049/3millionlives-delivery-plan-by-april)

### Have we got even more news for you!

If you are switched on to the above items, the November Telecare LIN newsletter is now available. Packed with everything you need to know about latest policy, practice and product developments. The latest edition and accompanying supplement on Integrated Care can be found at: [www.telecarelin.org.uk](http://www.telecarelin.org.uk)



## RESEARCH NEWS

### Effectiveness and cost-effectiveness of integrated homeless health and care services

The NIHR and HTA are seeking applications for funding that assess new approaches that are providing services for homeless people and whether these models can be transferred to other disadvantaged groups, e.g. travellers or asylum seekers. The deadline for applications is 14 January 2014. More information at: [www.nets.nihr.ac.uk/funding/hta-researcher-led](http://www.nets.nihr.ac.uk/funding/hta-researcher-led)

### Home improvements can increase wellbeing according to research

Research by the University of Reading for Bracknell Forest Homes into the social value of their £61m home improvement programme has found that communities not only benefitted from physical improvements to homes but also benefitted from social and psychological wellbeing benefits. Read at: [www.bracknellforesthomes.org.uk/main.cfm?type=IDXN&Objectid=3594&parenttype=idx](http://www.bracknellforesthomes.org.uk/main.cfm?type=IDXN&Objectid=3594&parenttype=idx)

## CALLS FOR INFO



HOUSING & CARE  
FOR OLDER PEOPLE  
Research Network

We are pleased to have been asked to invite Housing LIN members to the following calls for information:

### Housing and Safeguarding

SCIE (Social Care Institute for Excellence) is working on a safeguarding guide for the housing sector this month. Their aim is to produce a practical online guide for release early next year, targeted at three different audiences: front-line housing staff, housing managers and local authority staff with safeguarding responsibilities.

Supported by the Housing LIN, SCIE are looking for examples of awareness raising amongst housing organisations, approaches for engaging in safeguarding in the housing sector and ways in which information sharing has been improved between housing, local authority staff and other safeguarding partners. If you would like to take part and/or have examples of safeguarding activities that you are involved in, from training & staff development to reviewing your policies, practices and procedures, please email asap: [elaine.cass@scie.org.uk](mailto:elaine.cass@scie.org.uk)

### Ageing and the Built Environment

The Royal Institute for British Architects (RIBA) is looking for an evidence base related to ageing and the built environment. Supported by the Housing LIN, evidence received will shape the RIBA's research focus on ageing over the course of 2014, its dissemination of both innovative and best practice research and design over the course of the year, culminating in work with research funders to fill gaps in knowledge and practice. RIBA will be collating evidence throughout 2014; however, this initial call closes on 31 January 2014. For more information, download the call for evidence document at:

[www.architecture.com/TheRIBA/AboutUs/InfluencingPolicy/ResearchandDevelopment/ResearchAndDevelopment.aspx#.UnGLtSS0YXw](http://www.architecture.com/TheRIBA/AboutUs/InfluencingPolicy/ResearchandDevelopment/ResearchAndDevelopment.aspx#.UnGLtSS0YXw)

To view a copy of the recent report, 'Silver Linings: The active third age and the city', from RIBA's think-tank Building Futures (reported on p.6), go to: [www.architecture.com/TheRIBA/AboutUs/InfluencingPolicy/BuildingFutures/silverlinings.aspx#.Um-K8ChqpiE](http://www.architecture.com/TheRIBA/AboutUs/InfluencingPolicy/BuildingFutures/silverlinings.aspx#.Um-K8ChqpiE)



## REGIONAL HIGHLIGHTS

As always, there is extensive networking going on amongst Housing LIN members. This section has updates from our regional leads on recent developments. For further information of what's happening in your region, go to the Housing LIN regional pages and, remember, contribute to your regional noticeboard so we can share latest developments!

### London

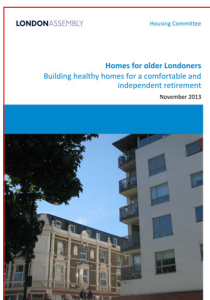
Hot off the heels of the recent Housing LIN case study 'Quality design attracts downsizers' a review of Halton Court, Margaret reports that the London Housing LIN meeting was held at Viridian Housing Association's award winning over 55s scheme at Kidbrooke Village. Copies of the presentations and the Housing LIN's HAPPI case study are now available at:

[www.housinglin.org.uk/Events/ArchivedEvents/ArchivedHousingEventDetail/?eventID=790](http://www.housinglin.org.uk/Events/ArchivedEvents/ArchivedHousingEventDetail/?eventID=790)

The scheme is also cited in the Mayor of London's draft London Housing Strategy released last month. This includes a specific section on housing for older people which makes a number of recommendations for comment by 17 February 2014. The proposals seek to expand the offer for older Londoners, as part of planning for a population that it is living longer, including:

- new homes should be built to Lifetime Homes standards, with at least ten per cent wheelchair accessible, and
- the provision of older people's housing should deliver a range of products, including shared equity, in mixed tenure developments.

View at: [www.london.gov.uk/priorities/housing-land/consultations/draft-london-housing-strategy](http://www.london.gov.uk/priorities/housing-land/consultations/draft-london-housing-strategy)



In addition, the GLA Housing Committee have published the outcome of its review into specialist housing provision for older people. With references to Housing LIN resources and our submission, their report, 'Homes for Older Londoners', recognises the valuable part played by this

type of housing in not only meeting demand from older people but also enabling strategic objectives to increase housing supply overall. It encourages local authorities to align planning and investment strategies to enable developers of specialist

housing for sale to compete successfully in the market for land use. The Mayor is urged to think long term beyond the life of the current Care and Support Specialised Housing Fund to meet the large shortfall in supply. The potential to reduce avoidable health problems and expenditure through better housing is set out and recommendations made about the roles of Health and Wellbeing Boards, the London Heath Board and Commission. View at: [www.london.gov.uk/mayor-assembly/london-assembly/publications/housing-planning](http://www.london.gov.uk/mayor-assembly/london-assembly/publications/housing-planning)

In other news, Margaret reports that Octavia Housing and builders Willmott Dixon have started work on 36 new affordable homes for Hounslow's ageing population. The new development will provide a selection of one and two-bedroom apartments for people aged 55 and over.



Leonarda House, Maida Vale

And in Westminster, Octavia Housing's extra care scheme in Maida Vale is now also open. Comprising 21 self-contained flats for older people, some of whom have dementia or a learning disability, there is also access to 24 hour care on site for those residents who need it.

In Lambeth, the council's cabinet has met to consider the detailed proposals on its older people's housing strategy, in particular to retain and modernise 543 units of sheltered housing in up to 17 sheltered housing schemes and approve the development of 160 more units of extra care housing, bringing the total to 565 in the area. However, she points out there is still a forecast deficit of 77 units of extra care housing by 2013.

And finally, approvals have been granted in Camden which will see a partnership between the local authority, Shaw Healthcare and Newlon Housing Trust providing 35 new extra care housing apartments for older people.

### Eastern

Sue reports that at the end of October, the Cambridge sub-Regional Housing Board (CRHB) held a seminar entitled Healthy Homes, Healthy Lives, affording participants from across the region the opportunity to consider the important contribution housing and related services make to health and wellbeing, and explore a range of issues. The presentations are at:

[www.cambridge.gov.uk/sites/www.cambridge.gov.uk/files/documents/HH-HL-feedback-excl-workshop-notes.pdf](http://www.cambridge.gov.uk/sites/www.cambridge.gov.uk/files/documents/HH-HL-feedback-excl-workshop-notes.pdf)



Sue also reports that following the amalgamation of the home improvement agencies of Huntingdonshire District Council, South Cambs District Council and Cambridge City Council into Cambs HIA, it has issued its first Annual Review as a benchmark for improving and developing the service it offers and developed a new website ([www.cambshia.org](http://www.cambshia.org)) where the Annual Review may be found.

### North East

Denise reports that the NE Housing LIN meeting at Castle Court, Stanley in Durham, hosted by Derwentside Homes, was a great success.

The meeting focussed on remodelling housing and housing-related care and support services for older people and included a 'look and learn' tour of the impressive remodelled scheme. The presentations by Derwentside Homes, the CIH, the University of Northumbria and Tyneside Homes are now available at:

[www.housinglin.org.uk/Events/ArchivedEvents/ArchivedHousingEventDetail/?eventID=789](http://www.housinglin.org.uk/Events/ArchivedEvents/ArchivedHousingEventDetail/?eventID=789)



*Jeremy Porteus at the NE Housing LIN meeting*

### West Midlands

Anne reports that the recent Housing LIN meeting took place at the newly opened ExtraCare Charitable Trust 'village' on Hagley Road, Birmingham. Copies of all the slides are now available at:

[www.housinglin.org.uk/Events/ArchivedEvents/ArchivedHousingEventDetail/?eventID=785](http://www.housinglin.org.uk/Events/ArchivedEvents/ArchivedHousingEventDetail/?eventID=785)

And in Bournville last month, hundreds of local older people attended an information day to find out more about the ExtraCare Charitable Trust's new 212 unit retirement village 'Bournville Gardens', in conjunction with Bournville Village Trust.



*Artist's rendering of the new village in Bournville*

Accord housing association held a stimulating health and housing conference, 'Caring for the Future', which looked at key issues around integrating health, social care and housing. Copies of the presentations can be found at:

<http://accordgroup.org.uk/calendar/336-Caring-for-the-Future-Conference-2013>

In Walsall, the Council and the Walsall Clinical Commissioning Group have published their Market Position Statement (MPS) for the care and wellbeing of older people. With explicit reference to housing, the MPS encourages the development of additional extra care housing for sale, lease and/or rent.

In Evesham, Willmott Dixon will build a £6m, 48 apartment extension for Rooftop Housing Group to the popular Yates Court extra care complex, managed by ExtraCare Charitable Trust.



*Yates Court, Evesham*

In Rugby, Willmott Dixon is working with Housing 21 on a facility that will provide 61 apartments for people requiring specialist extra care accommodation. It's the latest in a series of developments the company is building in Warwickshire for Housing 21.

In Sandwell, a groundbreaking ceremony was held last month to mark the opening of Goldfield Court, a new Housing 21 extra care housing scheme for older people in West Bromwich.

In Wombourne, Staffordshire, Wrekin Housing Trust (WHT) are involved in building 52 extra care housing apartments and she highlights that planning permission has been approved on a £13million extra care housing scheme to help meet the growing demand for older people's housing. In addition, WHT have opened a new supported housing facility which will provide first class accommodation for adults with complex learning disabilities. The building will be managed by Choices Housing. The scheme marks a shift away from traditional care home provision, giving residents a new level of independence. And in Penkridge, a consortium of the Housing Plus and South Staffordshire Housing Association will begin to develop a new 82 unit flagship scheme.

And lastly, the West Midlands ADASS Telehealthcare Network would like to work with the West Midlands Housing LIN to develop a shared approach to ensure that all housing providers are aware of the services they can access for their tenants i.e. strengthening local partnerships and a directory of AT services in the West Midlands.

They are seeking expressions of interest from housing providers in the West Midlands to work on a short term project. More info from:

[suewilliamswestmidlands@gmail.com](mailto:suewilliamswestmidlands@gmail.com)



## Yorkshire & Humber

Paula reports that Leeds City Council has secured over £1.5million from the CASSH Fund to develop a 45 unit, mixed tenure extra care housing scheme in Yeadon.

And in Kirklees, the council has developed an 'Excellent Homes for Life' programme geared towards building over 140 purpose-built units of extra care accommodation for its ageing population. The programme, in partnership with Wates Construction and Pinnacle PSG (housing management), will see the development of 3

new schemes in Heckmondwike, Dewsbury and Huddersfield. The first of these, on Dale Lane, is expected to open soon.



Artist's impression of the forthcoming scheme on Dale Lane

## North West

Libby and Jean report that the NW Housing LIN meeting at Red Bank extra care scheme in Radcliffe, Bury, was a great success. Members heard a series of excellent presentations and had an opportunity to tour the 40 unit scheme, one of the top 50 schemes in the UK last year, designed by Pozzoni architects for Six Town Housing. Copies of the PowerPoint presentations are now available at:



Red Bank, Bury

[www.housinglin.org.uk/Events/ArchivedEvents/ArchivedHousingEventDetail/?eventID=787](http://www.housinglin.org.uk/Events/ArchivedEvents/ArchivedHousingEventDetail/?eventID=787)

In Widnes, Halton Housing Trust are commencing building a 50 unit, mixed tenure, extra care housing scheme. And in Urmston, Trafford Council have given McCarthy&Stone planning permission to develop a 51 unit extra care housing scheme with a mix of one and two bed apartments.

In Chester, Wulvern Housing have appointed Galliford Try to develop a £6.6m, 60 unit extra care housing scheme at Blacon, near Chester.

Lastly, Rochdale Boroughwide Housing, who are currently developing their first Extra Care Housing scheme (as reported in our September edition), have been awarded Care and Support Provider of the year by 24 Housing Awards.

## South East

Sue reports that the SE Housing LIN meeting held at Shotover View, The Order of St John's extra care scheme in Horspath, Oxford, was a great success.

In addition, to coincide with the launch of the new Housing LIN case study last month (p.5), East Sussex County Council held a successful stakeholder workshop on the future direction of housing for older people in the county.

In Reading, the Borough Council has announced proposals to develop 40 units of specially-designed extra care housing, tailored and adapted to people's needs and flexibly designed to meet anticipated future needs alongside access to care and support 24 hours a day, seven days a week, either on site or by call.

She also states, following a successful bid to Care & Support Specialist Housing Fund, Brighton & Hove City Council Policy and Resources Committee have approved an allocation for the development of the £8.3m Brooke Mead extra care housing scheme for older people and those living with dementia.

In Surrey, Housing 21's new 60 unit extra care housing scheme in Horley is now open. With a selection of 1 and 2 bed apartments, Anvil Court is Reigate & Banstead's first extra care housing scheme and offers on-site care and a range of communal facilities for people over 55. 15 of the apartments are shared ownership.



Living area at Anvil Court, Horley

And finally, in Oxfordshire, Green Square housing group, in partnership with the County Council and West Oxfordshire District Council are on site to develop two extra care housing schemes for people aged 55 in Witney and Milton-under-Wychwood.

## East Midlands

Debbie reports that in NE Derbyshire and Bolsover Districts, the Healthy Communities and Wellbeing Scrutiny Committee have received an update on the older persons housing delivery plan. This highlights a number of developments underway including 90 new extra care apartments in Clay Cross and 15 new and replacement bungalows being built to lifetime home standards in Grassmoor.

In Long Eaton, Derbyshire, Housing 21 will be building 61 homes for the over-55s to be built on former school site. Read more:

[www.nottinghampost.com/61-homes-55s-built-school-site/story-19964136-detail/story.html#ixzz2INvyX6dx](http://www.nottinghampost.com/61-homes-55s-built-school-site/story-19964136-detail/story.html#ixzz2INvyX6dx)



And finally, Nottinghamshire County Council hosted a Strategic Housing for Older People event in September which was attended by representatives from local district and borough councils, Clinical Commissioning Groups and Public Health. The purpose of the event was to get commissioners across housing, social care and health together to start talking about developing a joint commissioning strategy on housing and accommodation needs for older people. The session was led by Dan Gaul who introduced us to the online Strategic Housing for Older People (SHOP) tool and facilitated a useful discussion. It was recognised that the tool will be very useful but first we needed to check that the underlying data for our area is correct, so all the LAs are undertaking a review of their information. Once the data has been verified the tool will help us analyse our current service provision and plan more strategically for the future.

Following the session in September, a second consultation event was held last month. This included colleagues from younger people's services and focused on developing a joint strategy for sustainable housing for older people and people with disabilities.

To view the Housing LIN's recent SHOP@ case study report, go to:  
[www.housinglin.org.uk/pagefinder.cfm?cid=8971](http://www.housinglin.org.uk/pagefinder.cfm?cid=8971)

### South West

Pat reports that recent SW Housing LIN meeting was held at Sandford Station, St Monica Trust's retirement village in Wimbourne, North Somerset. The meeting focussed on innovative approaches to housing, care and support for people with dementia. Copies of all the presentations are now at: [www.housinglin.org.uk/Events/ArchivedEvents/ArchivedHousingEventDetail/?eventID=788](http://www.housinglin.org.uk/Events/ArchivedEvents/ArchivedHousingEventDetail/?eventID=788)

And in Devon, the Cabinet met last month to note the strategic context around accommodation for adults with social care needs, including the approved strategy for extra care housing in the county.

In Gloucestershire, Barton Willmore's architects have designed a £2.3 million extension to Hanover's Extra Care Housing development in Cinderford, which is now the subject of a planning application to Forest of Dean District Council.



Artist's rendering of the extended scheme in Cinderford

And finally, in South Gloucestershire, the Council is revising its planning guidance on the provision of affordable housing and is also proposing to

issue new guidance on the provision of Extra Care housing, including affordable Extra Care. Consultation on these policy areas is now open to Friday, 24 January 2014 at:

[https://consultations.southglos.gov.uk/consult.ti/AH\\_and\\_EC\\_SPD/consultationHome](https://consultations.southglos.gov.uk/consult.ti/AH_and_EC_SPD/consultationHome)

### Wales

Jeremy reports that the South East Wales Improvement Collaborative (SEWIC) have launched a thought-provoking research report, 'Extra care: meeting the needs of fit or frail older people'. Written by the University of Swansea's Centre for Innovative Ageing, the research looked into the integration and management of complex care in Wales across three areas:

- i) examining the quality of life and experience of older people
- ii) seeking views of managers and social workers as to whether complex integrated social and health care be delivered, and
- iii) exploring the cost effectiveness of extra care housing compared to residential and home care

The resultant findings and recommendations make interesting reading and should stimulate further debate about how best to adopt a more strategic approach to developing extra care in Wales and building a stronger social ethos through public education. More at:

[www.housinglin.org.uk/HousingRegions/Wales/](http://www.housinglin.org.uk/HousingRegions/Wales/)

He also states that a topping-out ceremony has been held at Golau Caredig, a new £7.2m extra care apartment scheme with 42 apartments for older residents in Barry, developed by Bouygues Ltd (part of the Leadbitter Group) for Hafod Care Association.

And finally, the Welsh Government have announced their Help to Buy scheme, – Wales, a £170m shared equity loan scheme. This will be launched in January 2014. Details at: <http://wales.gov.uk/topics/housingandcommunity/housing/private/buyingandselling/help-to-buy-wales/?lang=en>

### Scotland

Jeremy reports that members of the public were given the chance to discuss a proposed new development of extra care housing and 'specific needs' 2 bed bungalows that will provide more support than traditional sheltered accommodation. The development, in Ostlers Way, Kirkcaldy, will be supported by Scottish Government grant funding.



## REGIONAL 'LEARNING LAB' MEETINGS / EVENTS

midland heart

housing, care and more



We are grateful to Midland Heart Housing Association for supporting these pages.

Due to preparations for our annual conference in February next year, there are no planned regional Housing LIN events until March. However, to receive an automatic invite for future meetings in your area, register your interest by region at: [www.housinglin.org.uk/userAccount/register](http://www.housinglin.org.uk/userAccount/register)

## HOUSING LIN ANNUAL CONFERENCE

### 'Learning today, leading tomorrow'

As reported on the cover of this issue, registration arrangements for our prestigious annual event in London on Tuesday, 18 February will be released on **Monday, 23 December**.

## OTHER FORTHCOMING EVENTS

This section lists major events supported by the Housing LIN that will be of interest to network members.

### IPC, Making best use of your sheltered housing asset

23 January 2014, Reading

<http://ipc.brookes.ac.uk/courses/workshops.htm>

### My House or My Home? The challenges of ageing and housing

6 February 2014, London

A conference on housing and support for older Londoners

[www.kcl.ac.uk/sspp/kpi/scwru/events/joint/6feb14.aspx](http://www.kcl.ac.uk/sspp/kpi/scwru/events/joint/6feb14.aspx)

## THE PASSING OF JOHN PENTON

We have only recently learnt about the sad news of the death of John Penton. John was an Architect with a great enthusiasm for improving the accessibility of buildings particularly for older people and those with disabilities. He was an influential member of HAPPI where he became an active panelist visiting all of the sites across the UK and Europe and adding considerably to the process. John remained a tireless advocate of the HAPPI principles continually promoting the ethos of the report until his passing. He also wrote the Housing LIN viewpoint (No43) only earlier this year, 'Home & Community: An ageing tsunami'. His death therefore comes as a great shock. He will be sorely missed.

## POETRY CORNER

*With The Ashes being played 'down under', we are pleased to bring you a great new poem by Brian Wilks.*

### Bowling at 80

In youth  
Never the cricketer  
No batsman  
Nor wicket-keeper  
Worse fielder  
Dreading the slips  
I have achieved my aim.

Chucking things upstairs  
Saves many a stumble  
Letting me hold banister rails  
And climb steadily.

I bowl books  
Waste paper baskets  
Assorted clothes  
Pell-mell up  
With googly cunning.

An acquired skill that waited for me  
To catch up.



We are grateful to Willmott Dixon for their support of *Housing with Care Matters*

WILLMOTT DIXON



## Housing LIN

c/o EAC, 3rd Floor, 89 Albert Embankment  
London SE1 7TP

© Housing Learning & Improvement Network

Tel: 0207 8208077  
Email: [info@housinglin.org.uk](mailto:info@housinglin.org.uk)  
Web: [www.housinglin.org.uk](http://www.housinglin.org.uk)  
Twitter: @HousingLIN