

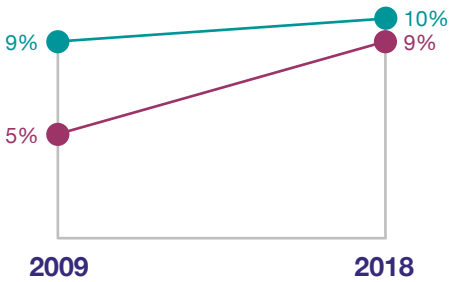
English Housing Survey 2018-19

Accessibility of English homes

In this fact sheet an accessible home is one with the four main criteria that make it visitable for most people, including wheelchair users: level access to the main entrance, a flush threshold, sufficiently wide doorways and circulation space, and a toilet at entrance level.

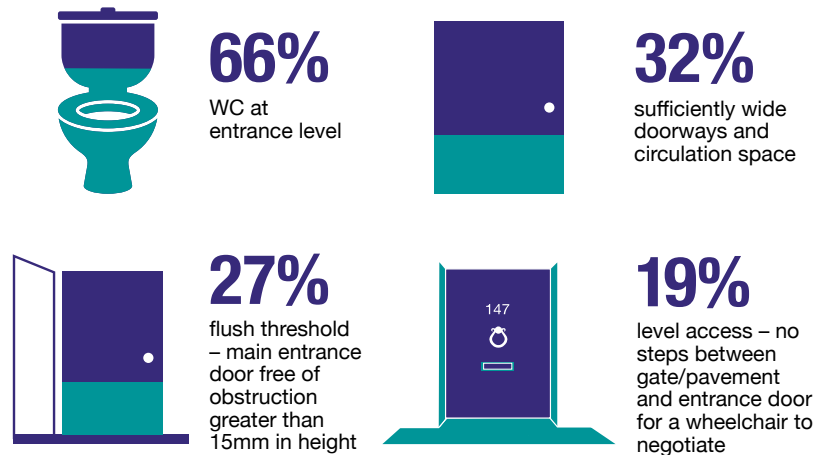


Changes in adaptations and accessibility

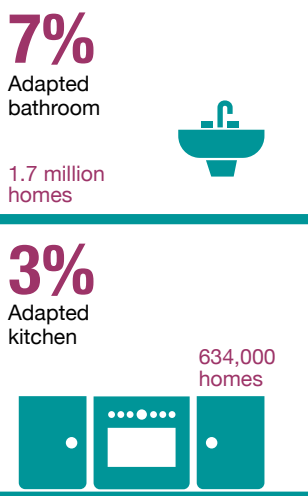


- Homes in England with at least one adaptation for a person with a disability
- Homes in England with all four accessibility features

Accessible homes



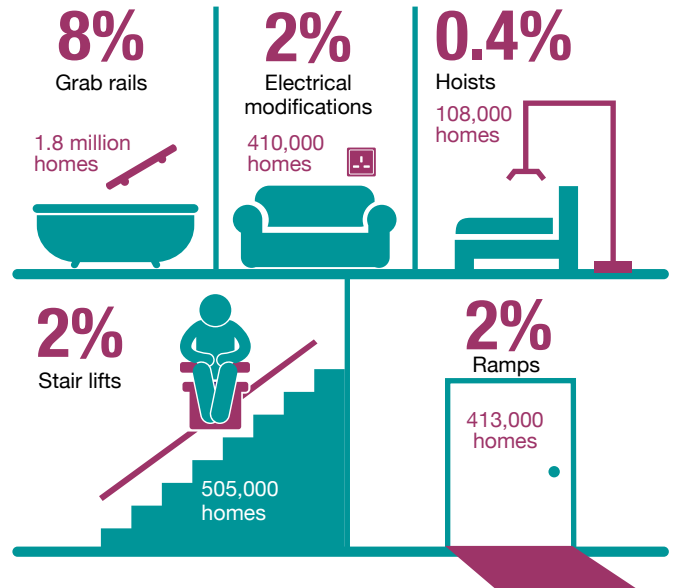
Room adaptations



Adapted homes

The survey recorded the prevalence of five adaptations for disability and whether rooms have been adapted.

In 2018, 2.3 million English homes had at least one adaptation for a person with a disability.



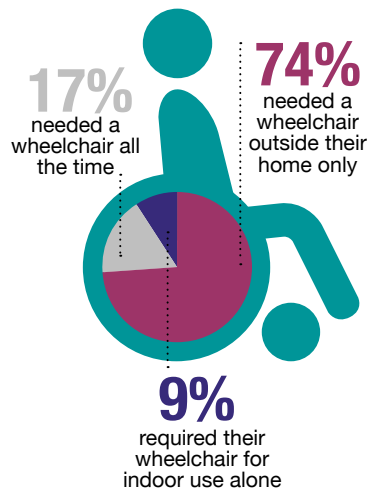
Note: for additional data on the accessibility of English homes, see the annex tables published alongside this fact sheet.

Wheelchair users

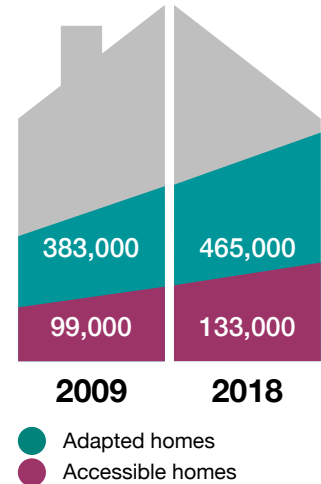
Most wheelchair users lived in an adapted home and most had a place to store their wheelchair



Most wheelchair users only needed their wheelchair outside of the home



The number of wheelchair users that lived in accessible and adapted homes has grown, though proportions have remained similar



Tenure comparison

Wheelchair users were overrepresented in the social rented sector

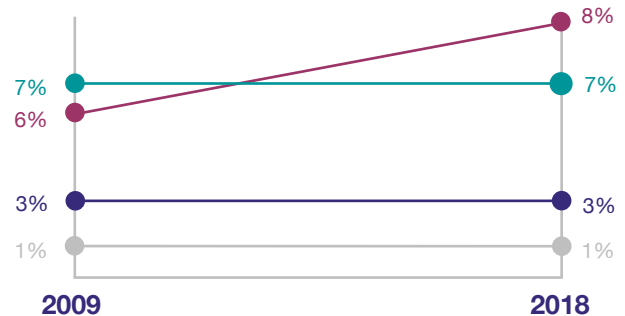
All households 2018



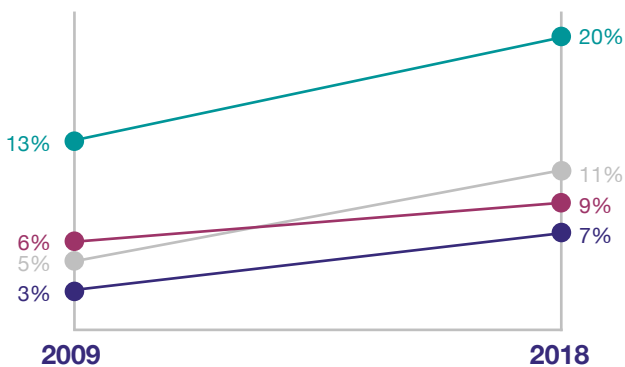
Household with wheelchairs 2018



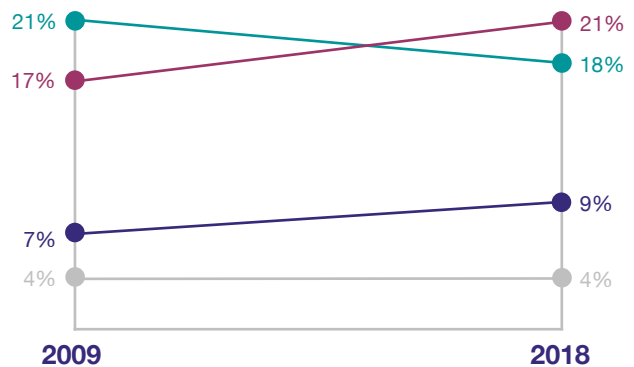
There has been an increase in the proportion of wheelchair users living in local authority homes



The social rented sector contained the highest proportion of accessible homes



The social rented sector contained the highest proportion of adapted homes (has at least 1 adaptation)



Owner occupied

Private rented

Local authority

Housing association