

HLIN Summit

Strengthening sector leadership: A call to action

Kate Henderson

National Housing Federation

@kateNHF

@natfednews

**NATIONAL
HOUSING
FEDERATION**

Overview

- Supported housing during the pandemic
- Wider challenges facing the social housing sector
- Social Care White Paper
- The role of the NHF in supporting leaders and making the case for supported and specialist housing.

Supported housing during the pandemic



Kate Henderson @KateNHF · Mar 30

Many thanks [@EddieHughes4WN](#) for meeting with NHF members to discuss the vital role that supported housing has played throughout the pandemic.

I'm looking forward to visiting some supported housing schemes with you & meeting residents & frontline staff when we're out of lockdown.



National Housing Federation and 9 others



1



3



30



Thank you!

**NATIONAL
HOUSING
FEDERATION**

Wider challenges facing the social housing sector

Challenges facing the social housing sector

1. Decarbonisation.
2. Building safety.
3. Regeneration and levelling up.
4. Quality, complaints and the Social Housing White Paper.
5. Supply and planning.
6. Operating environment.




1. Decarbonisation

- Shining a spotlight on housing associations' role in meeting net zero targets.
- Government Heat and Building Strategy has confirmed an additional £800m for the Social Housing Decarbonisation Fund.
- New guide to net zero for housing associations and sustainability hub on NHF website.




2. Building safety

- Calling for upfront funding from the government and keeping up the pressure.
- Gave evidence to the Public Bill Committee on the Building Safety Bill.
- NHF research revealed exclusively on BBC Newsnight, looking at the impact of building safety costs on social landlords, social residents and the supply of social homes.


**National Housing Federation**
@natfednews

Funding for building safety and remediation must extend to socially rented homes - we gave evidence to the Public Bill Committee yesterday setting out the importance of this for the [#BuildingSafetyBill](#)



Kate Henderson @KateNHF · Oct 21
On [@BBCNewsnight](#) I talked to [@lewis_goodall](#) about the impact of [#buildingsafety](#) costs on social housing providers, their social tenants and people in need of social housing

📺 Watch the Newsnight building safety package on [@BBCiPlayer](#) [from 32:00 📌 [bbc.co.uk/iplayer/episod...](#)] 📺 1/4



Lewis Goodall and 2 others

3 28 70

Web App

**NATIONAL
HOUSING
FEDERATION**

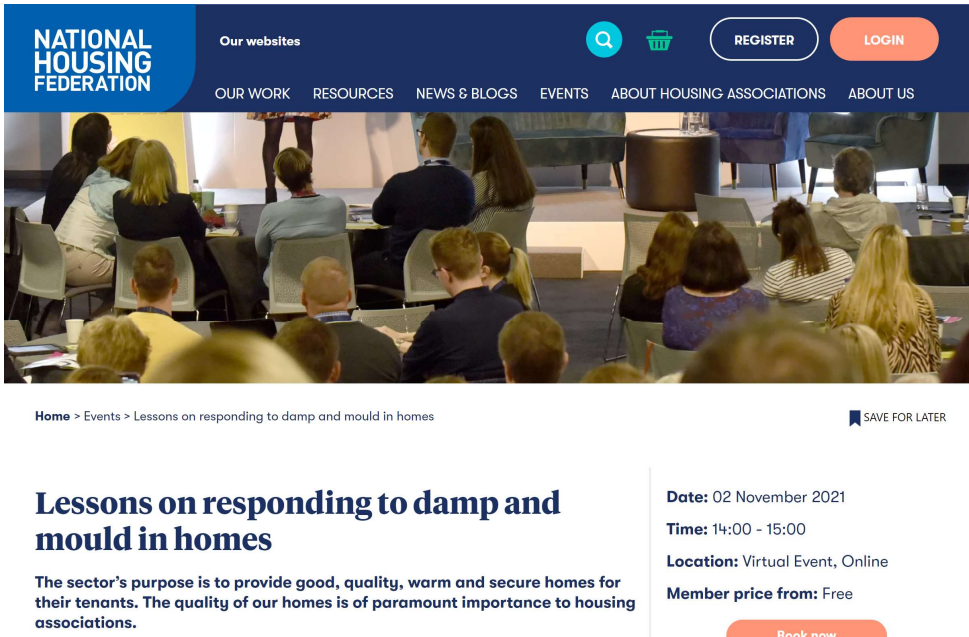
3. Regeneration and levelling up

- Making the case for housing associations' role in levelling up.
- Calling for flexibility on funding.
- Calling for direct access to Shared Prosperity Fund.



4. Quality, complaints and the Social Housing White Paper

- Social Housing White Paper Expert Challenge Panel
- Together with Tenants
- Three Rs from the Regulator – repairs, redress, respect
- Housing Ombudsman report on damp and mould.



The screenshot shows the National Housing Federation website. The header includes the logo, navigation links (Our websites, OUR WORK, RESOURCES, NEWS & BLOGS, EVENTS, ABOUT HOUSING ASSOCIATIONS, ABOUT US), and buttons for REGISTER and LOGIN. Below the header is a large image of a group of people in a meeting. The main content area features the event title 'Lessons on responding to damp and mould in homes' with a breadcrumb trail 'Home > Events > Lessons on responding to damp and mould in homes'. To the right of the title are details: Date: 02 November 2021, Time: 14:00 - 15:00, Location: Virtual Event, Online, and Member price from: Free. A 'Book now' button is at the bottom right. A 'SAVE FOR LATER' button is also visible.

NATIONAL HOUSING FEDERATION

Our websites

OUR WORK RESOURCES NEWS & BLOGS EVENTS ABOUT HOUSING ASSOCIATIONS ABOUT US

REGISTER LOGIN

Home > Events > Lessons on responding to damp and mould in homes

Lessons on responding to damp and mould in homes

The sector's purpose is to provide good, quality, warm and secure homes for their tenants. The quality of our homes is of paramount importance to housing associations.

Date: 02 November 2021
Time: 14:00 - 15:00
Location: Virtual Event, Online
Member price from: Free

Book now

SAVE FOR LATER

5. Supply and planning reform

- Affordable Homes Programme
- Planning reform – s106 and the proposed new Infrastructure Levy

6. Operating environment

- Residents' incomes and livelihoods: Universal Credit, energy bills and rents.
- Economic recovery, Brexit and cost inflation (labour and material supply).
- More regulation: safety and consumer regulation and sustainability requirements.
- Quality of homes and service: sector reputation and ITV News investigation.
- Tackling inequality: Equality, diversity and inclusion.



Social Care White Paper

**NATIONAL
HOUSING
FEDERATION**

Social Care White Paper

The Social Care White Paper sets out a welcome long term vision and **commitment to make every decision about care a decision about housing.**

It's good to see the government invest an additional £300 million over the next three years into local health and care, with an emphasis on increasing the number of new supported homes. With demand for supported housing expected to increase by 125,000 homes in less than ten years, this extra money is a positive starting point in ensuring that some of the most vulnerable people have the support, access and care they need at home.

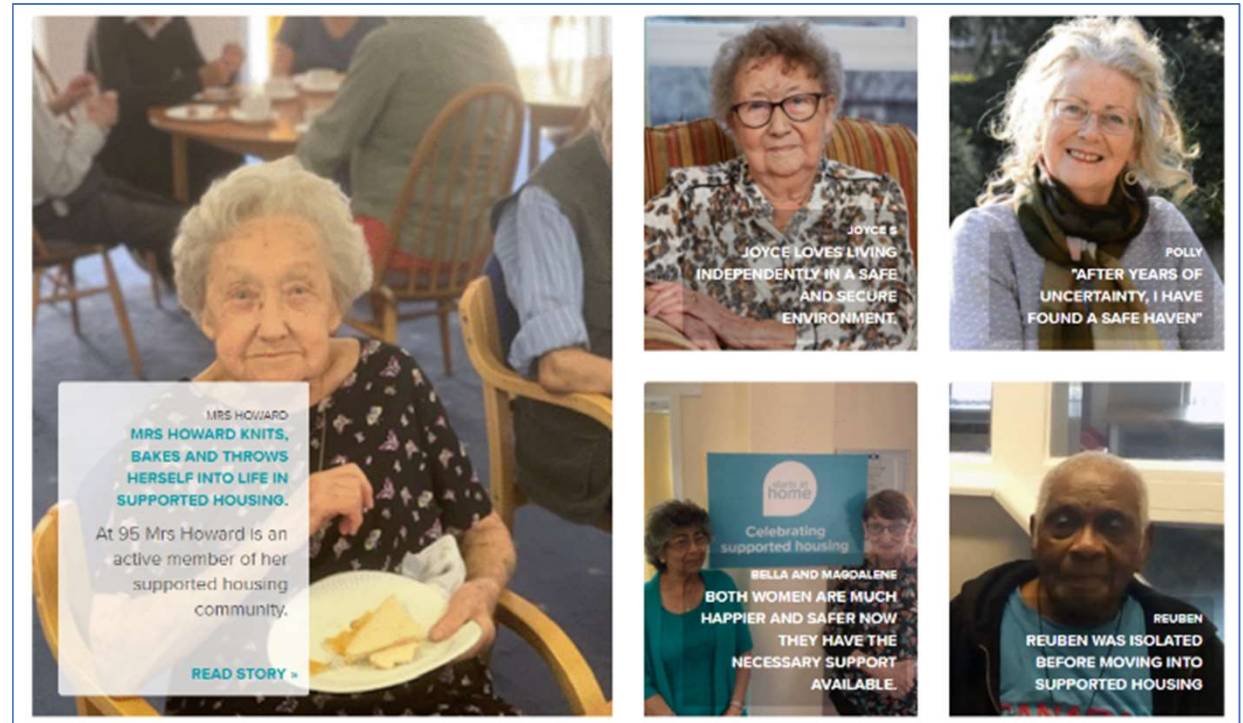
Housing associations provide nearly 75 percent of all supported housing and are ready to work with the government to provide these much needed new homes and services. We look forward to considering these proposals in more detail over the coming days.

And more detail on the paper here: <https://www.housing.org.uk/news-and-blogs/news/social-housing-recognised-in-new-social-care-white-paper/>

**The role of the NHF in
supporting leaders and
making the case for
supported and specialist
housing.**

Starts at Home Day and Spending Review

- Highlighting the role that supported housing has played during the pandemic.
- Continuing to call for a ring-fenced budget for housing-related support.
- Starts at Home Day.



Supporting members

- We supported weekly calls between supported housing members and DLUHC from the start of the pandemic until autumn 2021, which supported the government to find quick solutions to the huge challenges our members faced
- Our [member group on health and housing](#)
- Working with partners to amplify their messages



Thank you

For more information please see <https://www.housing.org.uk/our-work/supported-housing/>

**NATIONAL
HOUSING
FEDERATION**