

# How the LGBTQ+ Housing Pledge Transformed Resident Activities and Inclusion at United St Saviour's Charity

Jude Leighton (she/her)  
Head of Housing





# About us

## History

- Founded in 1541, United St Saviour's Charity has a long tradition of supporting residents of the London borough of Southwark.

## Investment Properties

- The charity's historic property portfolio in and around Borough Market generates sustainable income, funding our housing and grant-making programmes.

## Community Investment

- Through our Community Investment Programme and the One Southwark initiative, we partner with local organisations and residents to build equity, champion prevention and empower community groups.

## Almshouse Provision

- We provide high-quality affordable homes for older people on low incomes across four almshouses (oldest form of social housing) - offering comfort, community, and independence in later life.



# Our Almshouses



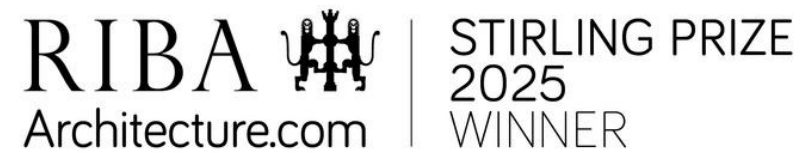
We are making sure our  
LGBTQ+ residents have a  
voice and are visible here

**LGBTQ+ HOUSING PIONEER**





*“This is a building born of deep concern for how to grow older gracefully in a supportive community, where every move in the design has been made to improve the quality of the residents’ lives” - RIBA Judges, 2025*



65  
residents  
57 flats

65-96+  
age  
range

Section  
106



# Our Pledge Journey

The LGBTQ+ Housing Pledge was created by HouseProud & the University of Surrey and is delivered by Stonewall Housing.

Any social housing provider can sign up to the Pledge free-of-charge to demonstrate inclusion and support for their LGBTQ+ residents.



**Inclusion** is a key strand in our strategic plan, and we want to create truly inclusive environments in our almshouses.



Previously working towards the Pride in Care accreditation with Opening Doors London.



Wanted a framework that was more suited to **housing** providers.



Made the Houseproud Pledge in **June 2024**.



Achieved Pledge Pioneer status in **May 2025**.



# How we met the standard

---



**Launched the Rainbow Club.**



**Named our Champions:**

Resident  
Trustee  
Staff



**Trained our staff.**



**Increased visibility.**



**Reviewed our policies and procedures.**



**Planned a series of events.**



**Invested in educational reading materials for residents.**

# Rainbow Club Launch

The Rainbow Club events focus on LGBTQ+ residents, but welcome everyone to promote inclusion and understanding



## Expert Panel Discussion

Four expert speakers discussed challenges faced by LGBTQ+ residents in social housing, sharing insights and solutions.



## Lived Experience Representation

Including a resident panelist brought authentic lived experience to the conversation, enriching the dialogue.



## Audience Participation

Audience members were invited to share their experiences and connect with one another, creating a safe and welcoming space



## Celebration and Inclusion

A rainbow cake was featured to celebrate the launch, symbolising community, inclusion, and support.

# Events

---



## Prince Charming

- An inclusive musical comedy engaging LGBTQ+ residents and allies
- Open to the wider community
- Funded by LB Southwark
- Held at Appleby Blue almshouse
- Celebration during Pride month



## Pride Panto

- Organised by Residents
- Intergenerational
- Inclusive and open to the whole community



## Posh Club

- The Posh Club is a glamorous social club for older people, featuring cabaret, dancing, and afternoon tea.
- Promotes joy and intergenerational connection.
- Provides a safe and celebratory space for older LGBTQ+ residents and allies.
- Helps reduce isolation and build community.

# Learning & Collaborating



## Visiting the Queer Britain Museum

Not long after its opening, we arranged an exploratory initial visit to the new queer Britain museum in London to build a relationship with the organisation.



## Creating LGBTQ Libraries

For LGBTQ+ History Month, we began investing in books on queer history and life in London, aiming to establish a dedicated LGBTQ+ section in each lounge of our almshouses over time.



## Life House Impact Project

Worked with the Life House Project to create an animated training video. This empowered our residents to share their lived experiences and will help to shape inclusive practices in housing and care settings.

# What's next?

## The next 6 Months



### Creating Dedicated Spaces

Focusing on LGBTQ+ residents specifically, to foster safe, affirming environments tailored to their needs.



### Intergenerational Education Events

Launching activities that involve grandparents—especially those with LGBTQ+ grandchildren—to promote understanding, empathy, and support across generations



### Fun & Engaging Activities

Introducing more creative and social events to strengthen community bonds and celebrate diversity



### Expanding Partnerships

Collaborating with external organisations, such as our ongoing work with the University of Surrey on the Life Impact project, where LGBTQ+ residents co-created an animation used for training in the housing sector



# Impact of the pledge

*“I've been a resident with St Saviour's for over 10 years now and management's commitment to LGBTQ+ rights and issues has been exemplary. This culminated in the successful launch of the Rainbow club which provided a warm welcome to all with an interest, and especially supports the welfare of our LGBTQ+ residents” - Resident, Hopton's Gardens Almshouse*



**Creating a united Southwark with strong, equal and inclusive communities where everyone can thrive.**

