

# Pride in Place?

Issues and Initiatives

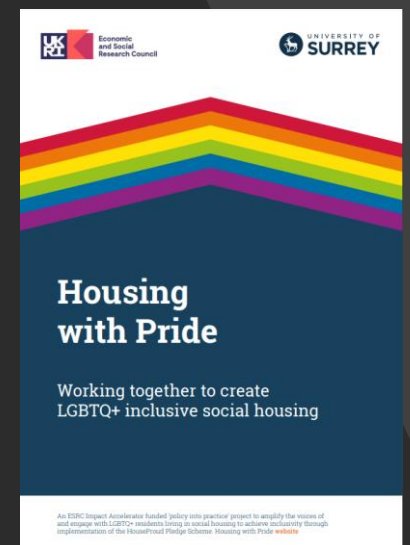
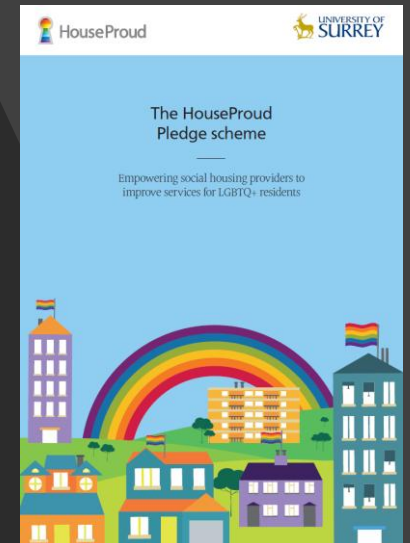
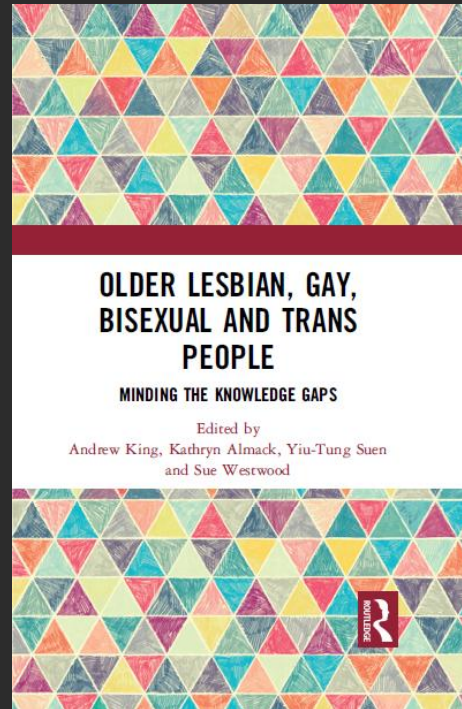
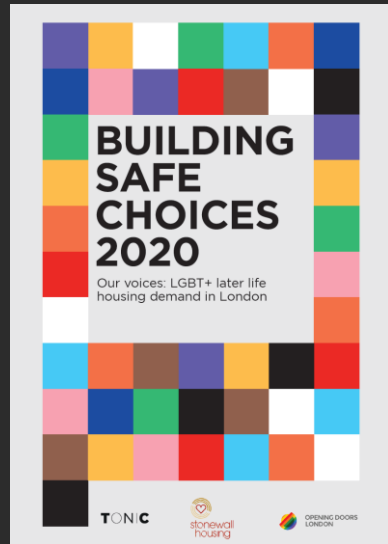
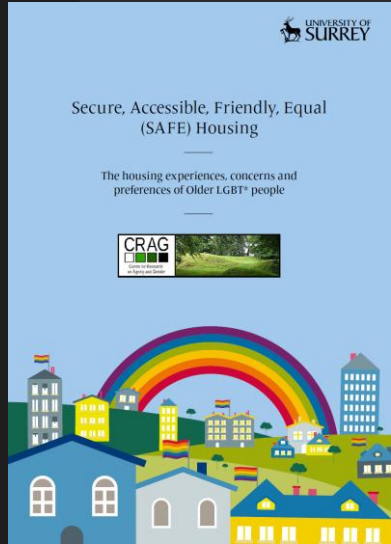
Professor Andrew King (he/him)

University of Surrey, UK

You are welcome to refer to or cite this presentation, if doing so in documentation, please use the following convention:

King, A (2026) "Pride in Place? Issues and Initiatives." Presented at "*Pride in Place: Celebrating inclusive housing & LGBTQ+ community initiatives*" Housing LIN HAPPI Hour webinar, Tuesday 2<sup>nd</sup> June

# 10 years of LGBTQ+ housing research and impact projects...



Using: Mixed and Co-design Methods  
Collaborating with LGBTQ+ community organisations and members, and housing sector

# What are the key issues?

---

- Feeling safe and being able to be authentic LGBTQ+ self at home is highly dependent on a range of factors:
  - Perceptions and experiences with neighbours and neighbourhood
  - Who is coming into the home (modifications and hypervigilance)
  - Being/becoming isolated or vulnerable
  - Lack of access to inclusive services
  - Service responses to discrimination, harassment, abuse, hate crime

*"But how do you deal with, you know, the guy next door who won't even get in a lift with me?"*

*(Housing association) have got various different engineers for whatever it is and I'm very, very wary of who they're going to be sending here. Are they going to pick up the fact that I'm gay? When it's a male that's coming here, the pictures all come off the shelf."*

*"I think what would worry me... if I wasn't in a position to fight my corner. I wouldn't like that. If I was in an empowered state, yeah, you get on and you try it. But if I wasn't well... I wouldn't want to think that [homophobia] might happen to me"*

# Housing needs now and in the future

---

- 58% of survey respondents (SAFE Housing study) had concerns about housing later in life but 72% had not made any plans in relation to their future housing.
- Concerns expressed about discrimination in mainstream housing for older people.
- When care included, most wanted LGBTQ+ specific provision. In Building Safe Choices 2020 study: Majority (64%) wanted LGBTQ+ specific care provider, with fewer (25%) an LGBTQ+ accredited general provider. Only 2% would prefer an unaccredited general provider. Trans respondents concerned about transphobia in LGBTQ+ settings too.
- In our surveys of older LGBTQ+ people and those living in social housing, approx 75% felt that an equality scheme/framework to identify inclusive housing and care organisations would be useful.

# Policy and practice initiatives

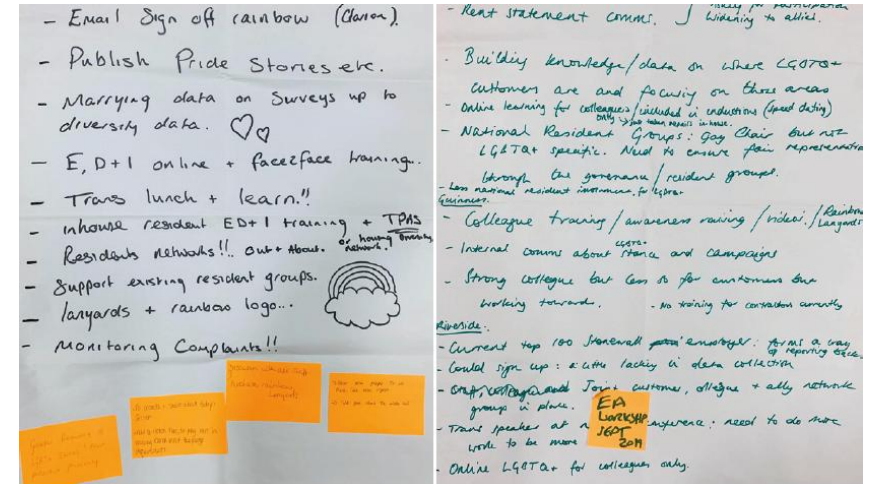
---

- Co-designing initiatives with LGBTQ+ people and housing professionals
  - **LGBTQ+ Housing Pledge**
    - developed by University of Surrey and HouseProud, now delivered by Stonewall Housing
    - a free-of-charge scheme that all social housing providers can sign up to. It asks them to demonstrate their commitment to LGBTQ+ resident equality and support. It was designed to work flexibly for all social housing providers, regardless of their size and geographical location.
    - 98 social housing providers (housing associations and local authorities) are signed up
    - regular accreditation process (panel including LGBTQ+ residents)
    - Pledge Forum – community of practice support
  - **Making Safe Housing Choices project (Universities of Surrey & Hertfordshire, Stonewall Housing, Tonic Housing)**
    - Develop and promote two new resources
      - a guidebook for LGBTQ+ community members to highlight issues around housing in later life, questions to consider, sources of information and support
      - an infographic for housing professionals to use to sign-post to specialist services, sources of LGBTQ+ specific information and community groups
    - Launching later this month!



# Some reflections

- Collaborative and co-design working with LGBTQ+ community members is key to success and they should be in active and engaged positions i.e. co design and implementation and represent diversity within community
- Collaborations with housing organizations as well as LGBTQ+ support organizations and local and central government is needed
- Accreditation schemes need a lot of thought and planning and sustainability and governance are key
- We should celebrate the progress there has been, but be mindful that much is still to do
- Finding creative ways to facilitate LGBTQ+ people to tell their stories and then enabling those to educate others is important





CENTRE OF  
EXCELLENCE  
ON AGEING

UNIVERSITY OF SURREY



FACULTY OF ARTS  
BUSINESS AND  
SOCIAL SCIENCES

UNIVERSITY OF SURREY

# Thank you

[andrew.king@surrey.ac.uk](mailto:andrew.king@surrey.ac.uk)



Scan or search 'Andrew King Surrey'  
to access my webpage with links to  
reports and publications