



# APPLEBY BLUE ALMSHOUSE

for

United St. Saviour's Charity

by

WITHERFORD WATSON MANN architects







## SEASIDE & COUNTRY HOMES AREAS AND PROPERTIES GUIDE

This guide contains information about the areas and properties that are part of the scheme. You should read it carefully before you make your application. You may also find it useful to refer to once you've applied or if you need to contact us.



 Housing LIN



BLOGS

### Older tenants in social housing make up 40% of under-occupied homes



*Louise Drew*  
Head of Building Communities, Shakespeare Martineau

19/01/23

Those of us working in, and residents living in, later living know the benefits it can bring to physical and mental health of older



**The number of older people wanting to move but unable to find suitable new home is equivalent to combined population of Birmingham, Leeds, Glasgow, Sheffield and Bradford.**



**A million older  
people in the UK  
haven't spoken to  
anyone for a month.**

*'With a narrow focus on physical and health needs, the current system too often neglects what it is to lead a decent life in later years. The starting point for any system of care should be to ask what it takes to lead a good life. This broader starting point would take us beyond solutions that centre on services, to place a greater value on mutual support and building on existing resources within families, neighbourhoods, community networks.'*



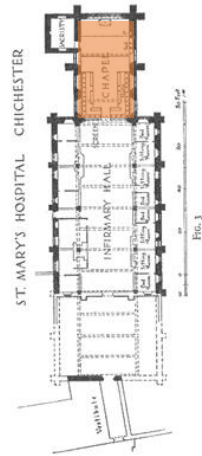
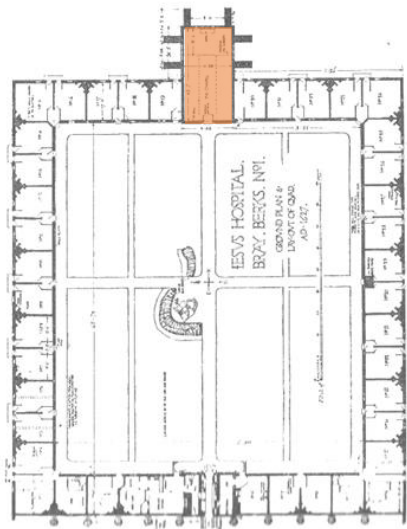


FIG. 3



HOSPITAL OF ST. MARY, CHICHESTER

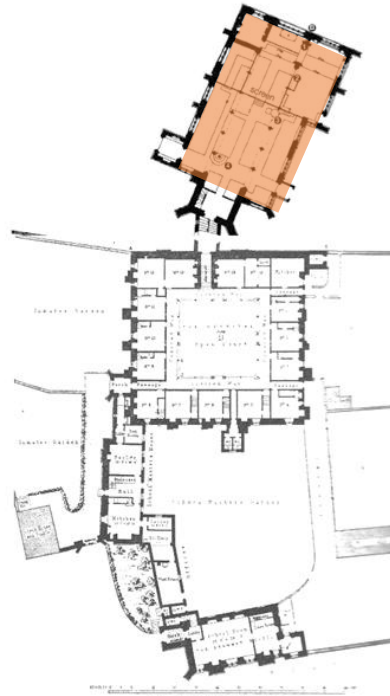
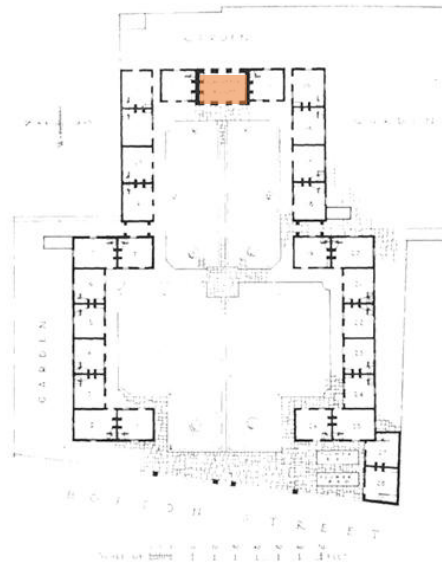


FIG. 28. The Rode House, Exeter.

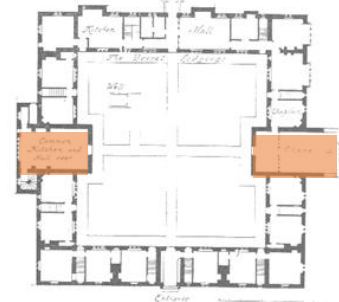
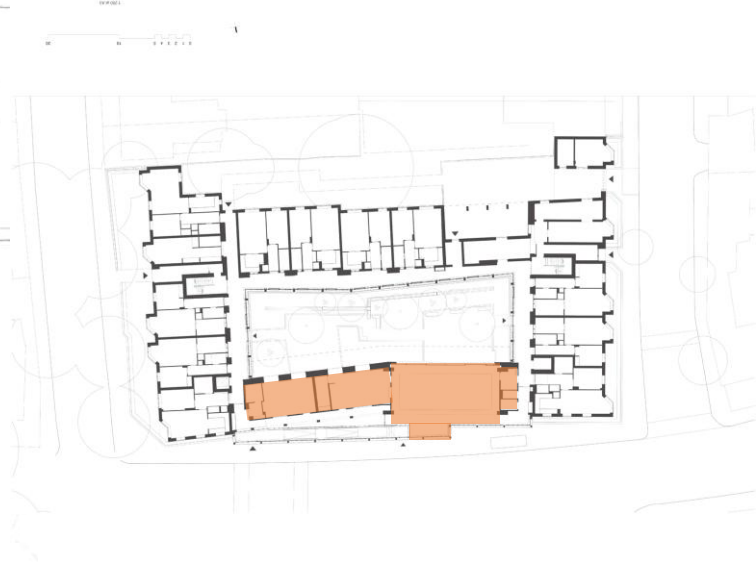


FIG. 43. St. Mary's College, Exeter.





Enclose the garden court  
With a 'U' of housing



Locate the shared-rooms  
Directly on the high street

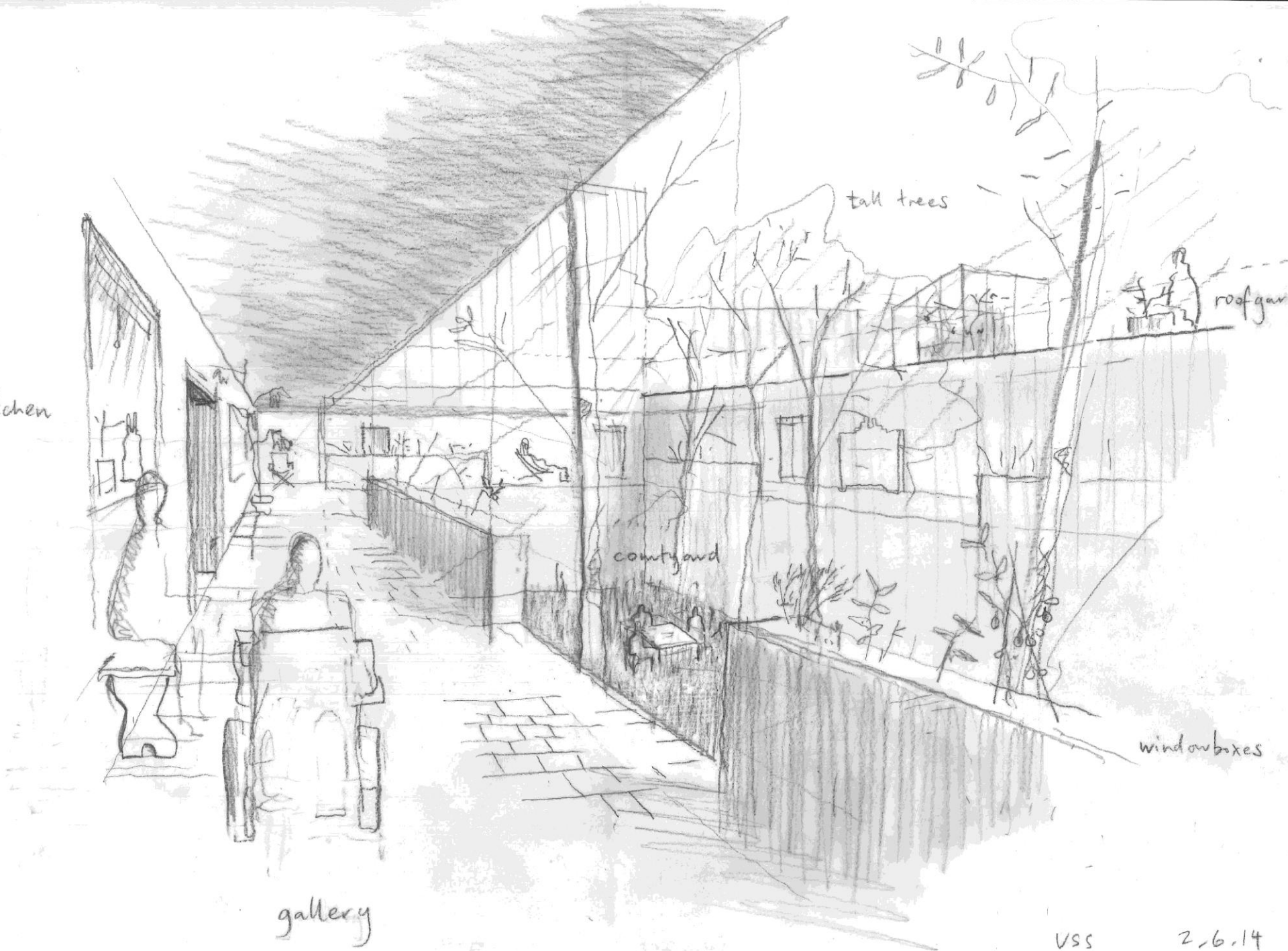




Add another 'U' of homes above,  
rotated through 90 degrees



A stacked almshouse  
around a shared-garden court.



chen

tall trees

roof garden

courtyard

window boxes

gallery

VSS

2.6.14







street

café

courtyard  
garden







alm 19.7.14









FE  
N



















































*“This should be the promise of urban life: the city’s diversity of urban life becoming a source of mutual strength rather than a source of mutual estrangement and civic bitterness.”*

Richard Sennett





*“Something has gone wrong, radically wrong, in our conception of what a city itself should be. We need to imagine just what a clean, safe, efficient, dynamic, stimulating, just city would look like - we need those images to confront our masters with what they should be doing - and just this critical imagination of the city is weak”*

Richard Sennett