

---

# HAPPI HOUR WEBINAR

Shared practice learning: Joining  
the Dots

The importance of robust asset  
data and knowing your stock

Gavin Wright – Head Of Property Management

---



# A collaborative project

**Project Aim:** Exploring the potential of IoT technology in a asset compliance and property management. To provide a holistic view of tenants' environment and wellbeing, enabling predictive and proactive interventions to improve service delivery and tenant outcomes.



This scheme was made possible through funding from the UK Government's Department for Science, Innovation and Technology (DSIT) as part of the Glasgow City Region (GCR) 5G Smart and Connected Places Programme.



# The property and the people

## Langvout Court - Retirement Housing development. **Biggar, South Lanarkshire.**

- **25 self-contained flats** and **communal areas**, fostering a vibrant and active community.
- **Utilising LoRa** National Infrastructure for connectivity.
- A **variety of sensors** deployed across tenant **properties and communal spaces**.
- Deployed within Biggar specifically to test an IoT deployment within **a remote and rural area**.



# Sensors we have now...and for the next steps.

limitless IoT sensor opportunities for supporting people and assets



## Multi-Sensor

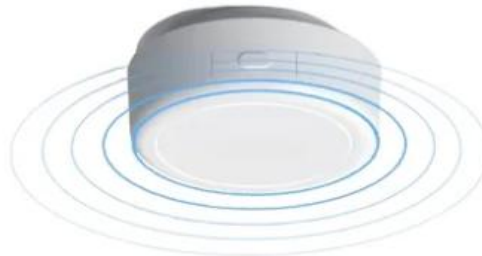
- PIR motion detection
- Room occupancy
- Ambient temperature
- Humidity, Light levels
- Optional magnetic detection which can be used for windows/doors
- Exit doors
- Communal doors
- Loft hatches



Water Temperature / Water quality sensing e.g. legionnaires



Thermostatic radiator valve



mmWave Fall prevention/detection radar



Water usage and leak detection



Sensor with visual display for tenant

# Assess - aggregated asset and social housing data

sharing data with internal & external stakeholders



- Multiple co-designed dashboards.
- Tailored stakeholder dashboards, reports and infographics.
- Actionable insights and alerts.
- Enabling proactive and preventative approaches.
- Powerful data analytics.
- Manual alert rules, machine learning, and AI modelling.

# EVIDENCE IN ACTION

## Independent validation by FarrPoint

### Smart care trial delivers results.

In partnership with Bield Housing and Care and the Digital Health & Care innovation Centre (DHI), Archangel took part in a rural care project backed by UK Government funding.

Assessed by independent digital consultancy experts FarrPoint, the trial showed how smart sensor tech made a real life impact across:

1. **Reduced utility costs**
2. **Reduced maintenance costs**
3. **Reduced manual checks**
4. **Improved tenant safety**
5. **Improved regulatory compliance**
6. **Supports Net Zero targets**



### 4.4:1 Return on Investment (ROI)

Multi-use sensors easily show a positive ROI within the first year based upon just initial utility and maintenance cost savings.

However, there are numerous additional qualitative benefits of multi-use sensors (regulatory, safety and health and care), alongside the possibility for scalability and proactive asset maintenance that can lead to an even greater ROI.



70

IoT sensors  
deployed



£600,000

Investing in  
smart housing



10

Properties  
and residents  
benefitted



£7,670

Annual saving in  
heating costs  
per sheltered  
housing  
development



£2,825

Annual saving in  
maintenance  
costs per  
sheltered  
housing  
development



£3,250

Annual  
saving in  
reduced  
damp  
specialist  
surveys



£18.5 million

Annual savings across  
Scotland based upon  
just initial utility and  
maintenance reductions



- Improved regulatory compliance
- Improved resident safety
- Reduced risk of damp related illnesses
- Early detection of changes in activity
- Share and personalise care provision

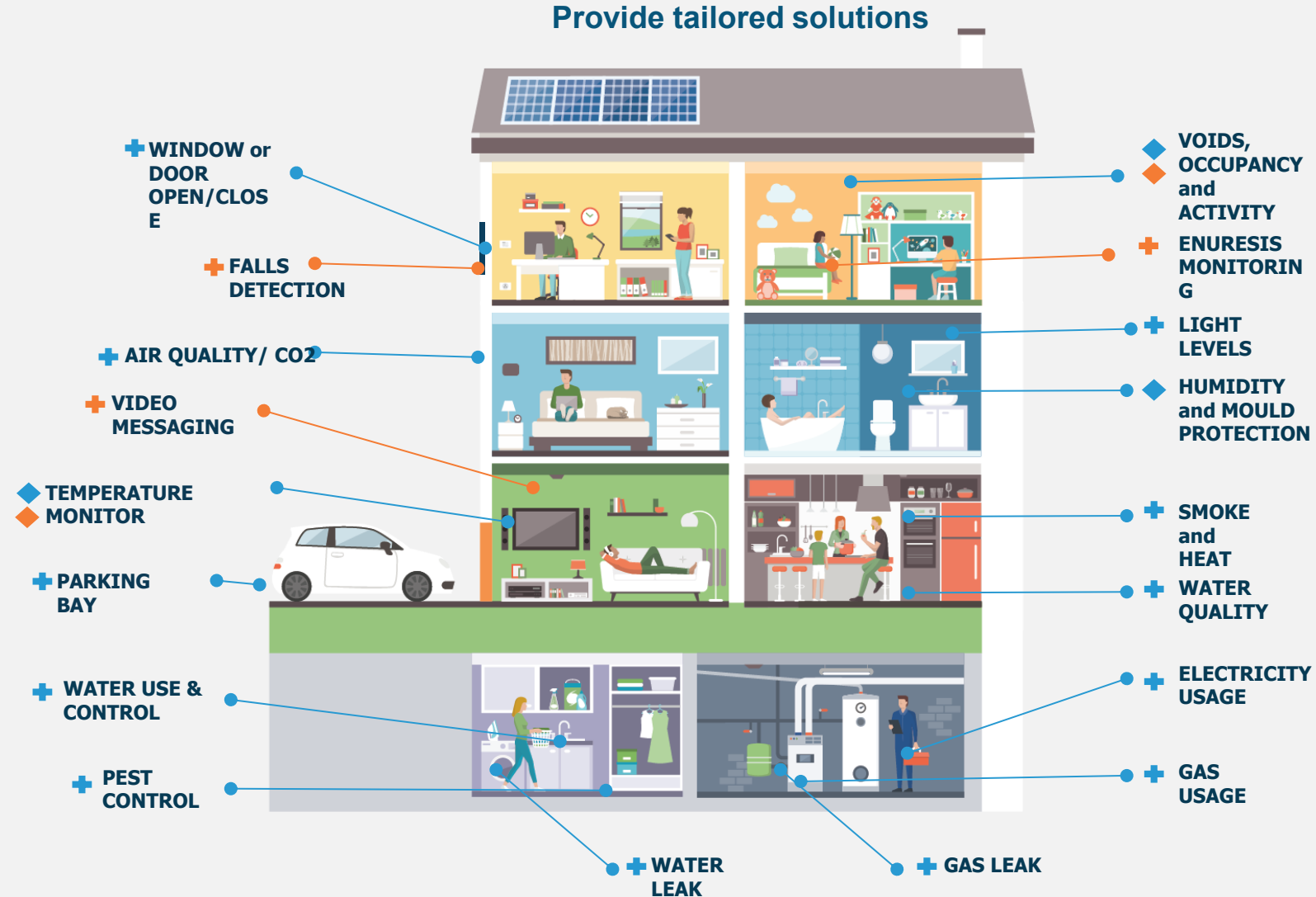
# Integrated housing and care applications

## Housing Management & Compliance

- Safer Homes ◆
- Safety Upgrades +
- Energy Monitoring Upgrades +

## Social Care, Wellbeing & Health Compliance

- Safe & Well◆
- Activities of Daily Living Upgrades +
- Proactive Care Upgrades +
- Integrated Health Integrations (e.g. Integrate data from Virtual Wards)







## Full Evaluation Report.

Request your copy now via the QR code:



## Contact:

w. [archangel.cloud](https://archangel.cloud)  
e. [hello@archangel.cloud](mailto:hello@archangel.cloud)

# Thank you for attending!

