

HAPPI Places: Connecting Communities for Lifelong Homes and Lifetime Neighbourhoods

Clare Cameron



Later living **at PRP**

25+

Years working together

35+

Later living designers

12,425

Units built

Unrivalled experience & portfolio



Our projects range from specialist dementia care homes to large villages and Lifetime Neighbourhoods

As the UK market leaders in the field of later living & care, our award-winning team works with housing associations, charities, local authorities and private developers.

We cover all stages of the design process from inception to completion.

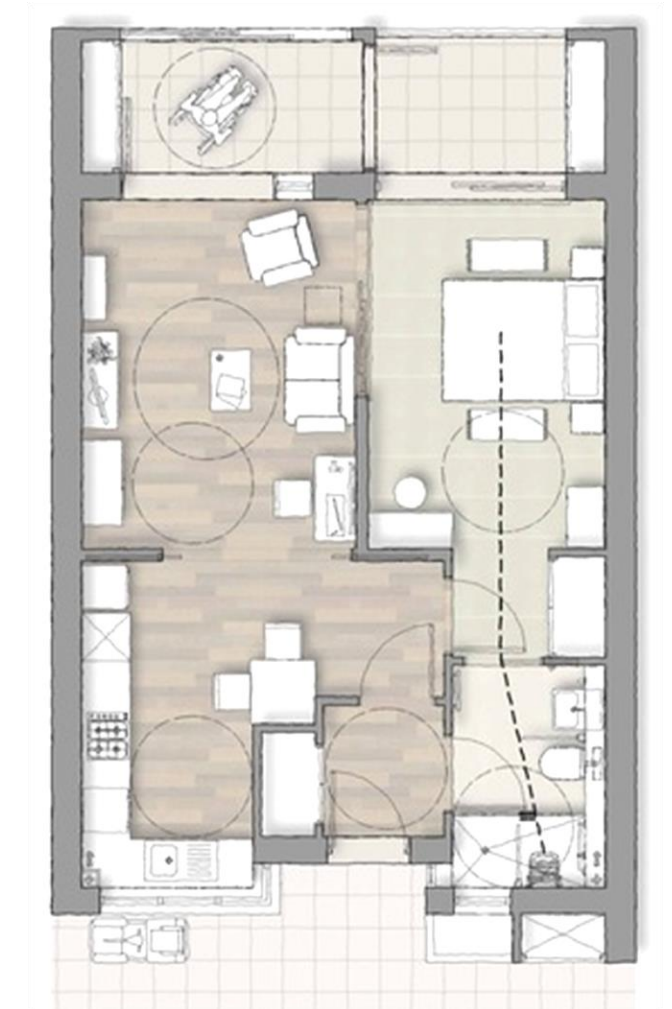
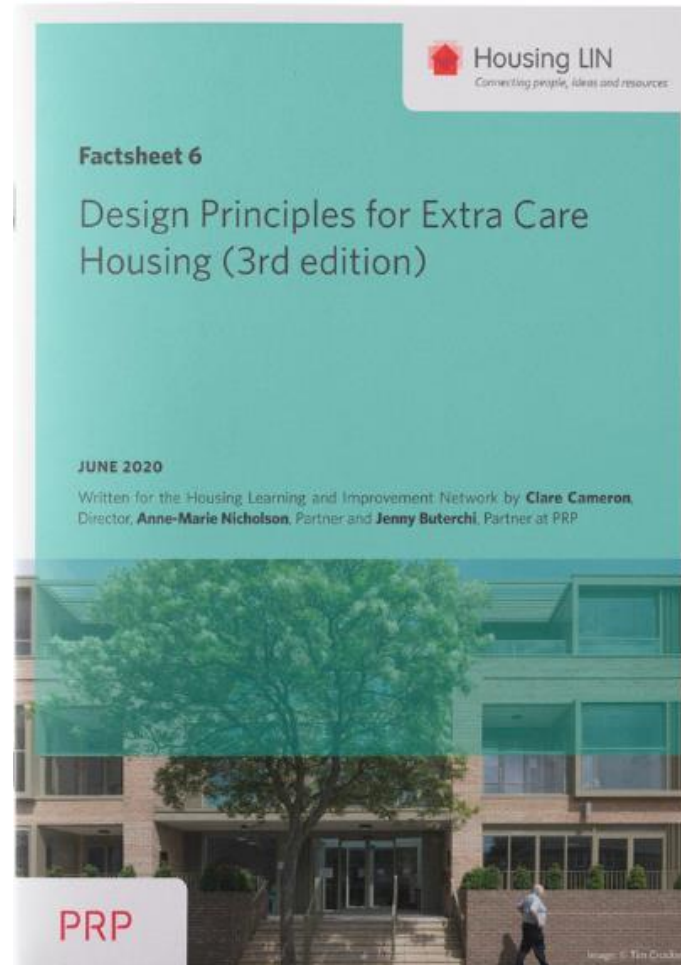
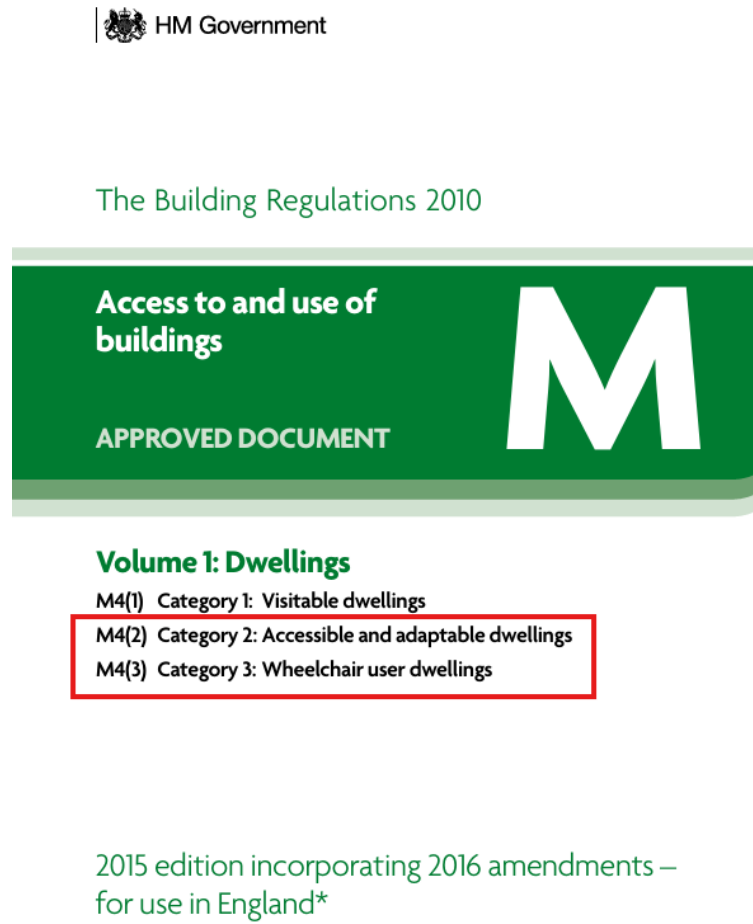


Connecting Communities for Lifelong Homes and Lifetime Neighbourhoods

1. What do we mean by Lifelong Homes?
2. What do we mean by Lifetime Neighbourhoods?
3. Designing Connecting Communities :
 - The right location and ensuring connection with the wider community
 - Nurturing connections within a community
 - Connecting with the landscape
4. Two exemplary PRP case studies

1. What is a Lifelong Home

PRP



M4(2) - not enough
M4(3) - not always appropriate

A need for more regulation and standards

A Home for Life



- Generous space standards
- Sliding screens
- Flexible open plan layouts



- Maximum natural light and daylight in apartments and circulation spaces



- Dual aspect apartments
- All balconies have space for table and chairs



- 'Care ready' apartments



- Open deck access



- Communal facilities



- Street engagement
- New gardens and existing trees retained



- Cross ventilation prevents overheating
- Generous, shaded private outdoor spaces



- Generous storage inside homes, outside on balconies and adjacent to front doors



- Priority is given to pedestrians not cars
- Car parking for staff and visitors is provided discreetly

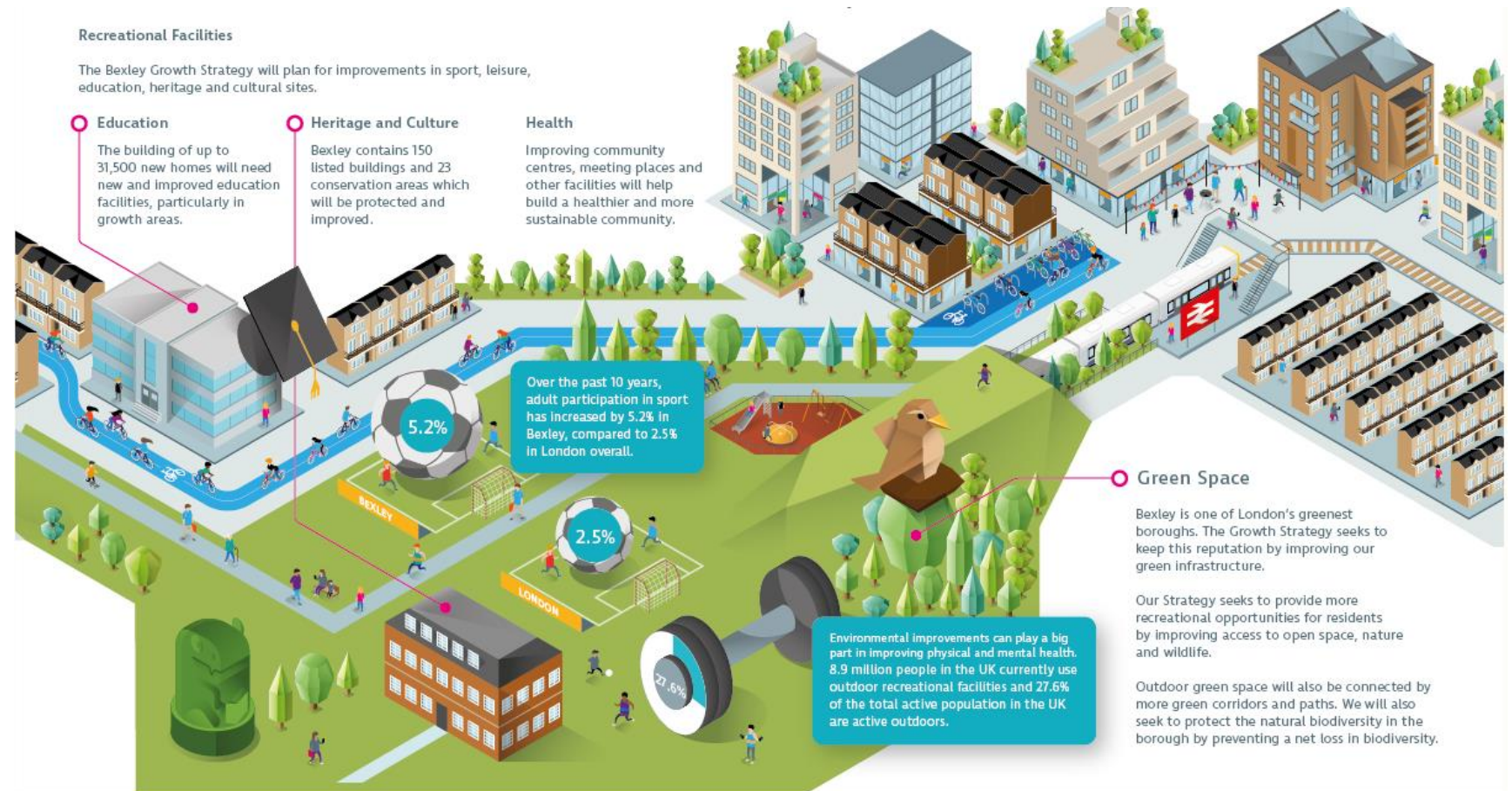
2. What is a Lifetime Neighbourhood



Lifetime Neighbourhoods



www.communities.gov.uk
community, opportunity, prosperity



A community designed to be accessible and inclusive for people of all ages and abilities, allowing residents to live independently and comfortably throughout their lives. Easy access to **transport, green spaces, amenities and lifelong housing**

3. Designing Connected Communities

The right location and ensuring connection with the wider community

Location

Wycliffe Park, High Wycombe



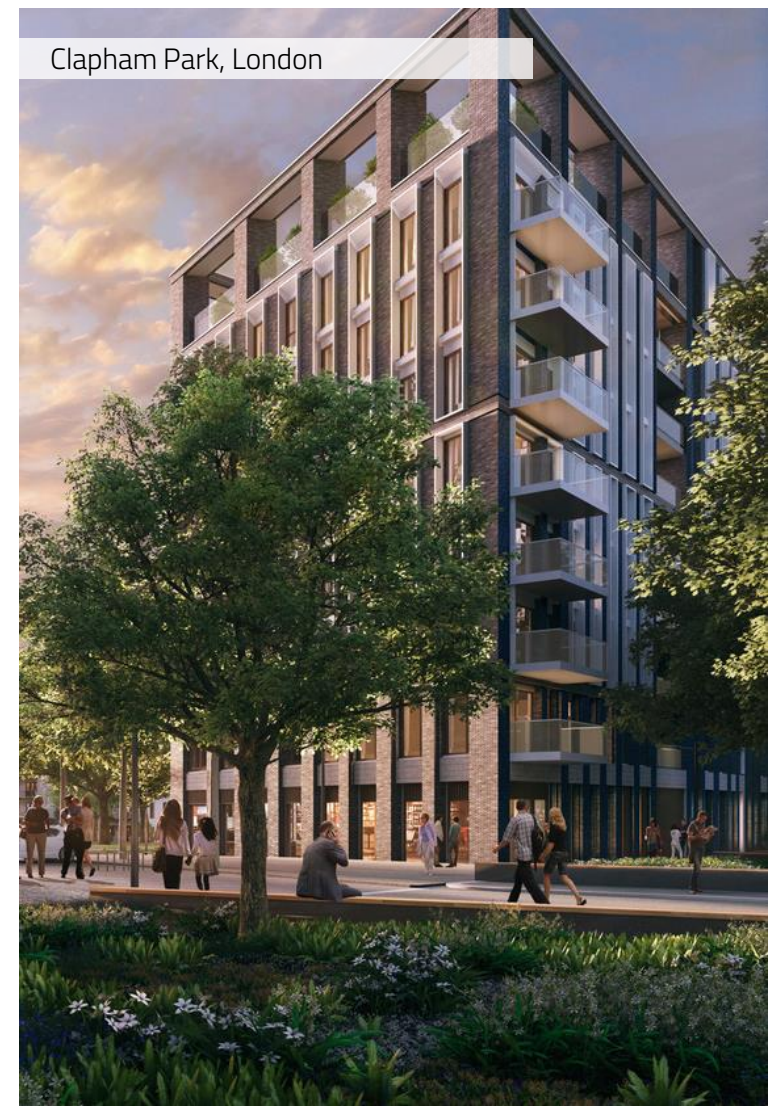
Rural

New Lodge, New Earswick



Peri-urban

Clapham Park, London



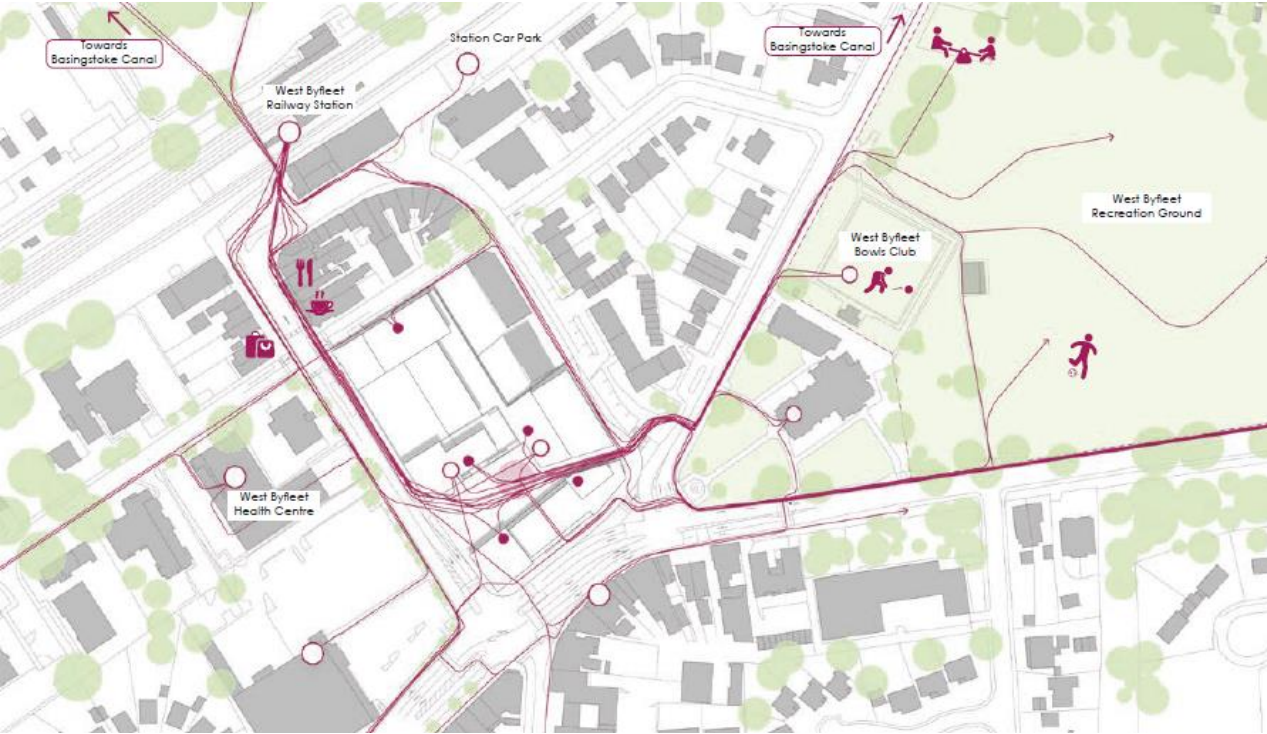
Urban

High Street Location

Botanical Place, West Byfleet



High Street Location



A public square for community events

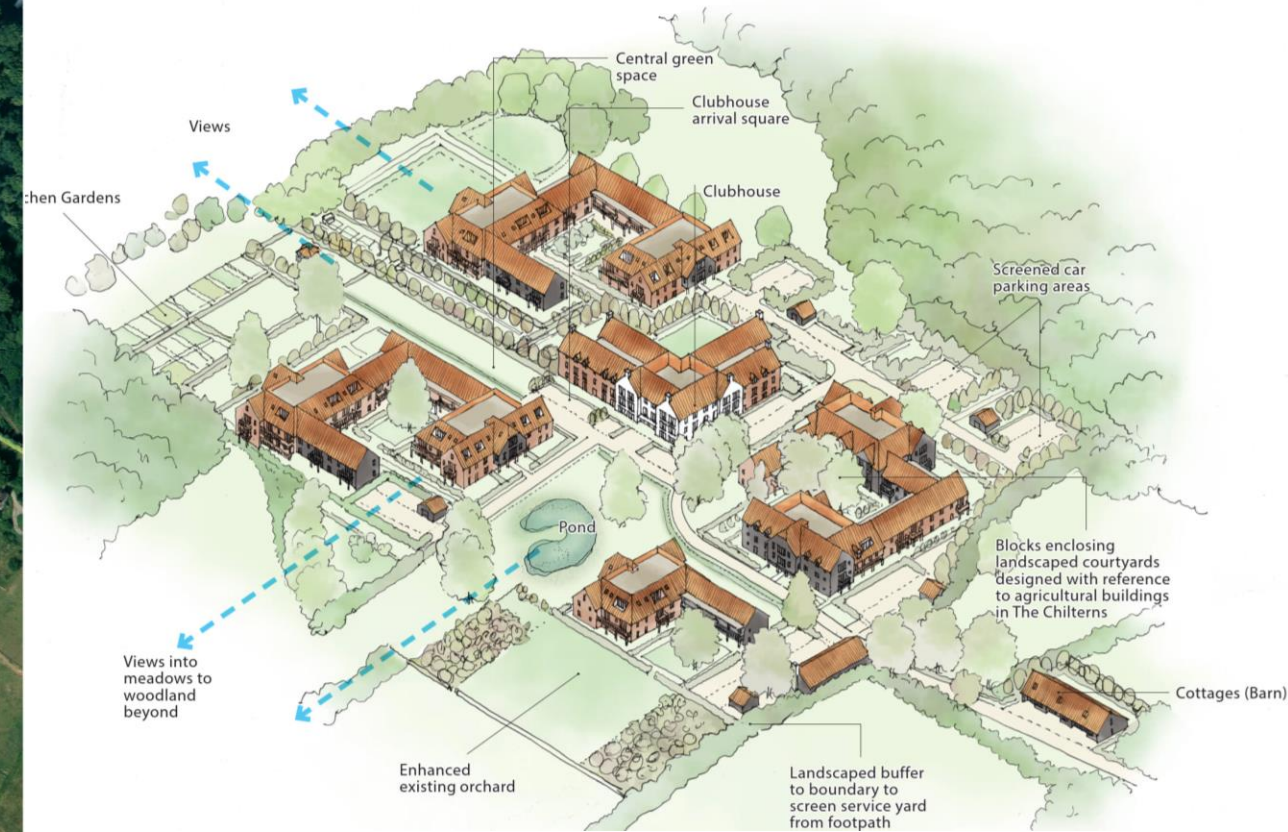
Botanical Place, West Byfleet



Rural Location



Wycliffe Park, Horsleys Green



Club House

PRP



Wycliffe Park, Horsleys Green

Attractive destinations for the wider community



Sharing the facilities with the whole community



Rosalind Court, Stratford Upon Avon

3. Designing Connecting Communities

Nurturing connections within a new development

Optimising Communal Spaces



Quadra, London Fields

Open Plan Layouts



Rosebery Manor, Reigate

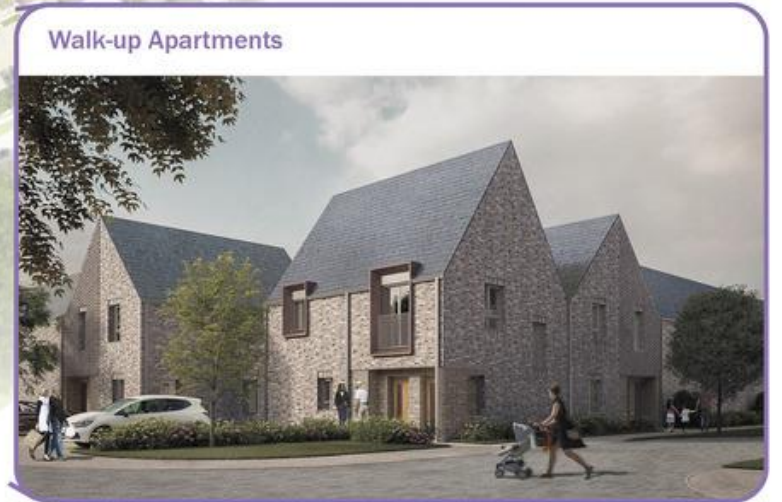
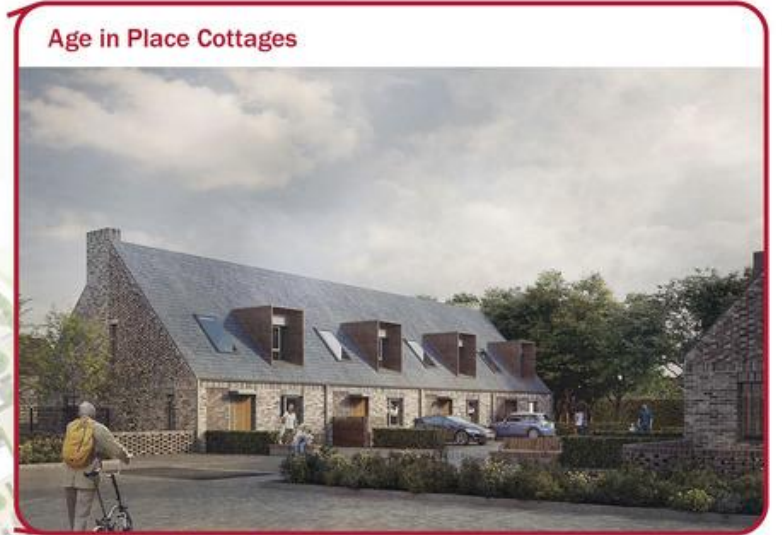
Occasional Seating



St Bede's, Bedford

Intergenerational Housing

3 Typologies for Older People



Oakfield, Swindon

A sense of neighbourliness



Oakfield, Swindon

Mixing the Generations: Walk-up Apartments



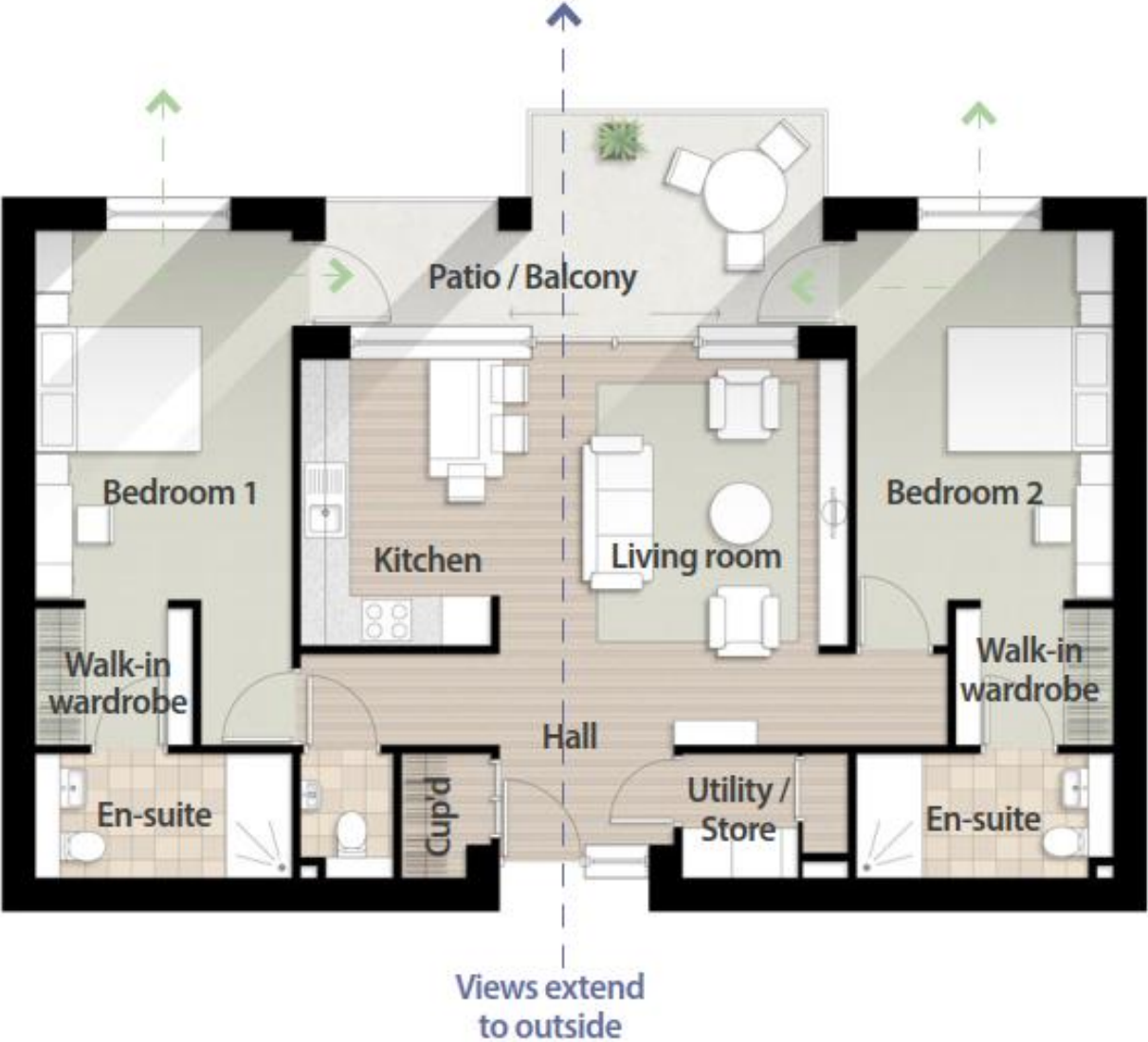
Age-in-Place Cottages



Community Hub



Oakfield, Swindon



3. Designing Connecting Communities

Connecting with the landscape

Visual Connection to the gardens

Pilgrim Gardens, Evington



Visual Connection to the gardens



Pilgrim Gardens, Evington

Purposeful landscapes



Purposeful landscapes

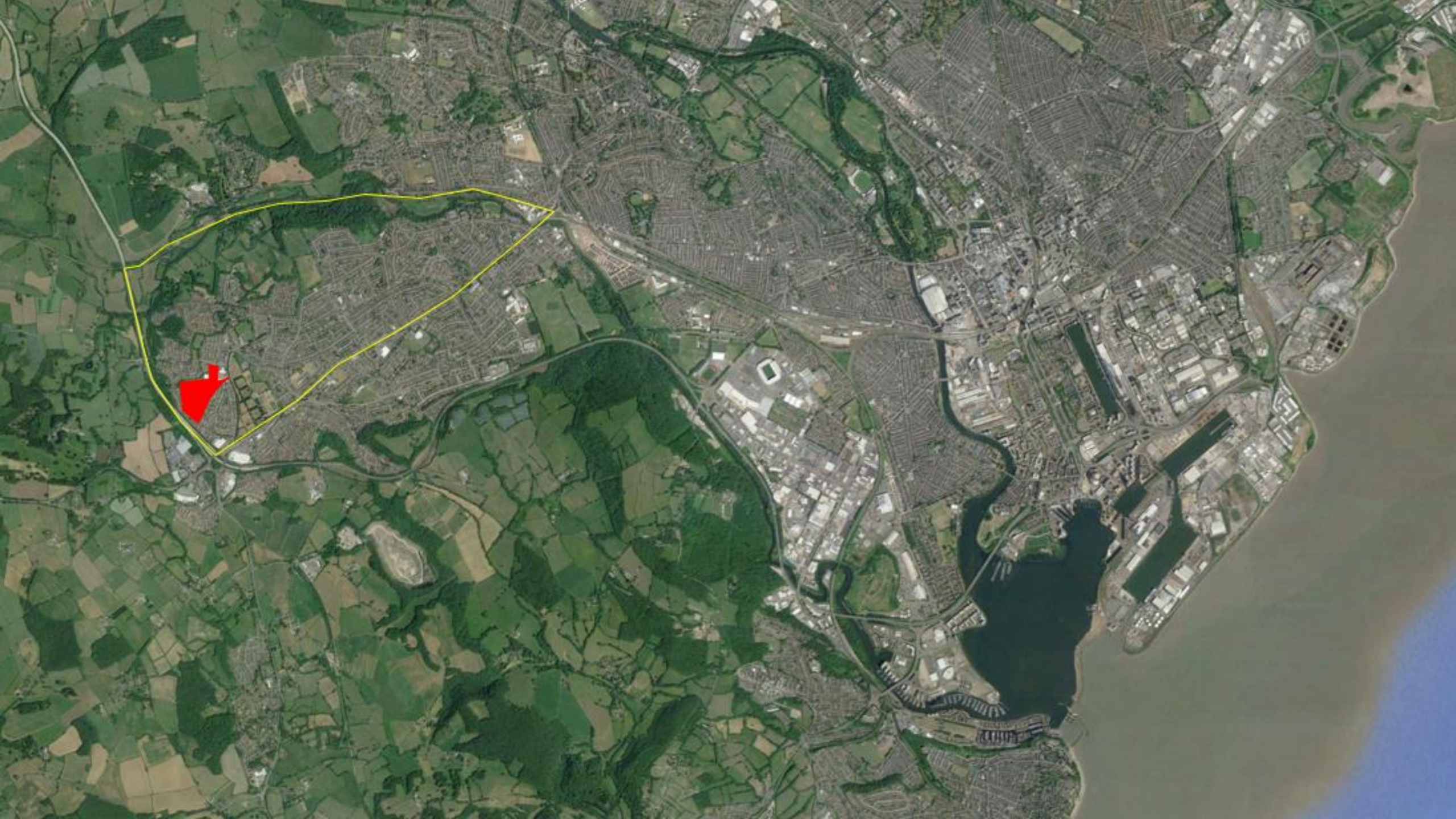


St Georges Retreat, Ditchling

Case Study One

Michaelston Wellbeing Village, Cardiff

Wates/ Cardiff Living









Village 'Square'

Vibrant and characterful village square at the heart of the scheme



The 'Green'

Social engagement opportunities



Hillside play route

Network of playable spaces to create happiness



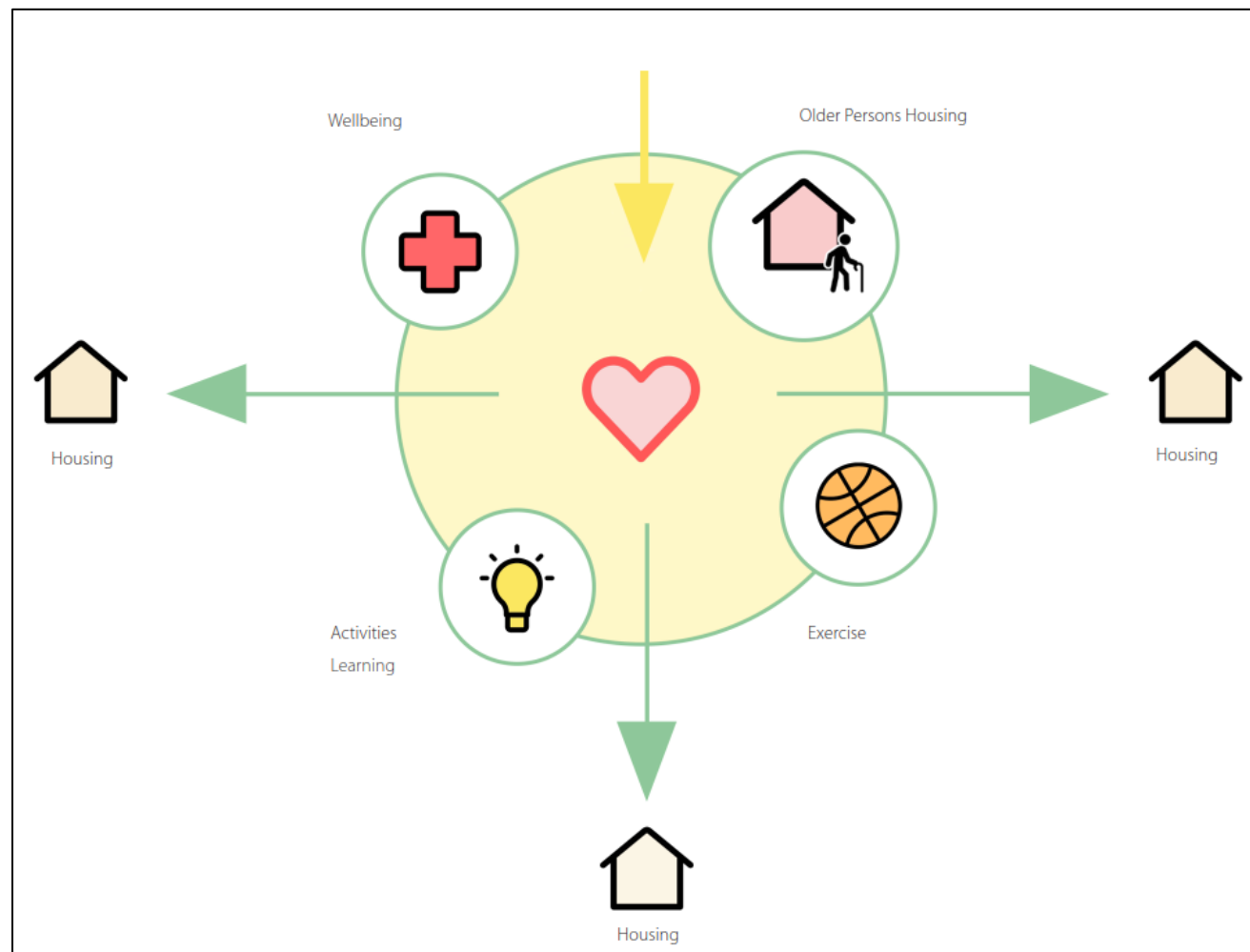
Community garden

Health



Wild wood

'Well-being'
Integration of existing green infrastructure





Green Spaces and Social Activities



Community Hub to provide possible cultural classes and learning with IT centre, Library and Halls



Communal facilities to give opportunity to try new things



Different public spaces to encourage residents to get out and about



The Community Garden, gardening for relieving stress and learning to grow food



Natural landscape areas (Wood) to allow interaction with nature



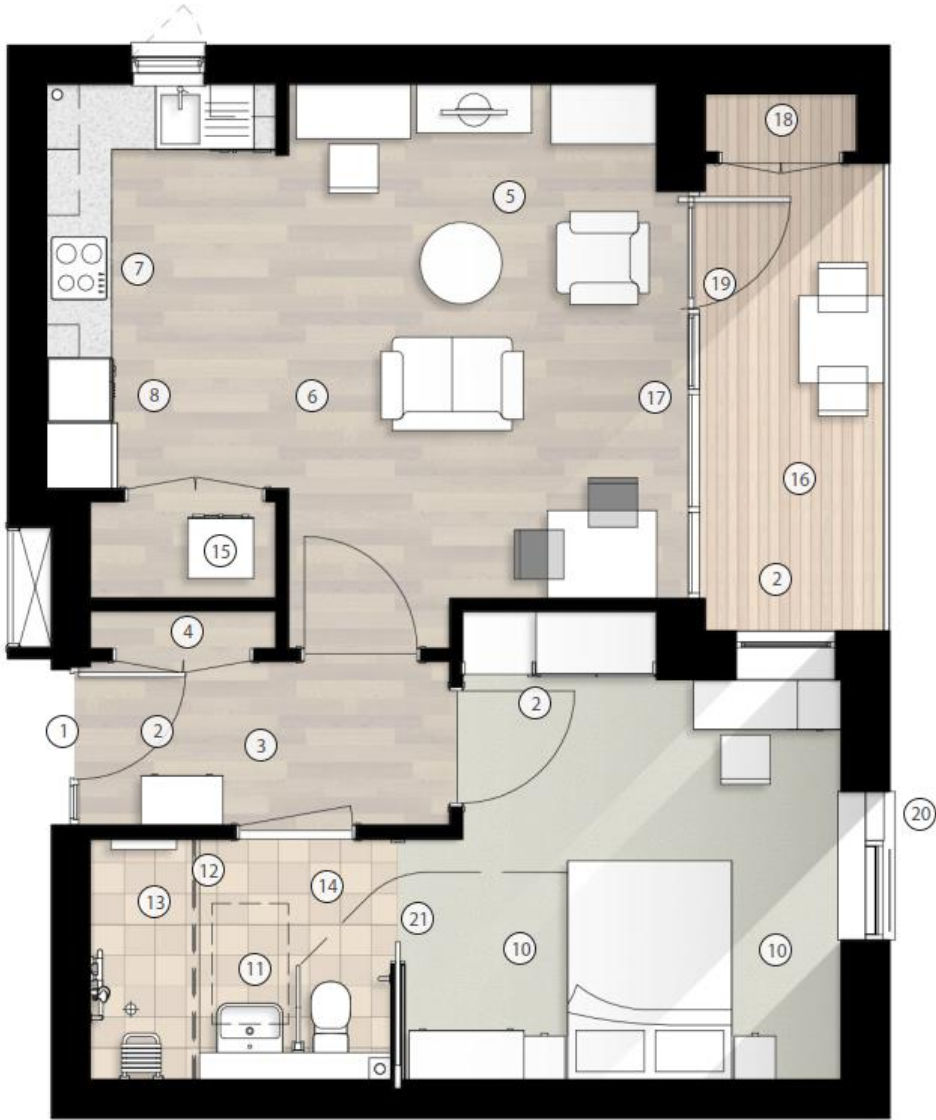
Opportunities for movement around site to improve mental health



Hair & Beauty provision for older residents on site



Lifelong Homes



Typical Apartment Plan – 55.8m²
Accessible Part M Cat 2 homes 'plus'

Lifetime Neighbourhood



Michaelston Village

Case Study Two

New Lodge Community

Joseph Rowntree Housing Trust



Think Bigger!



New Lodge Community, New Earswick