

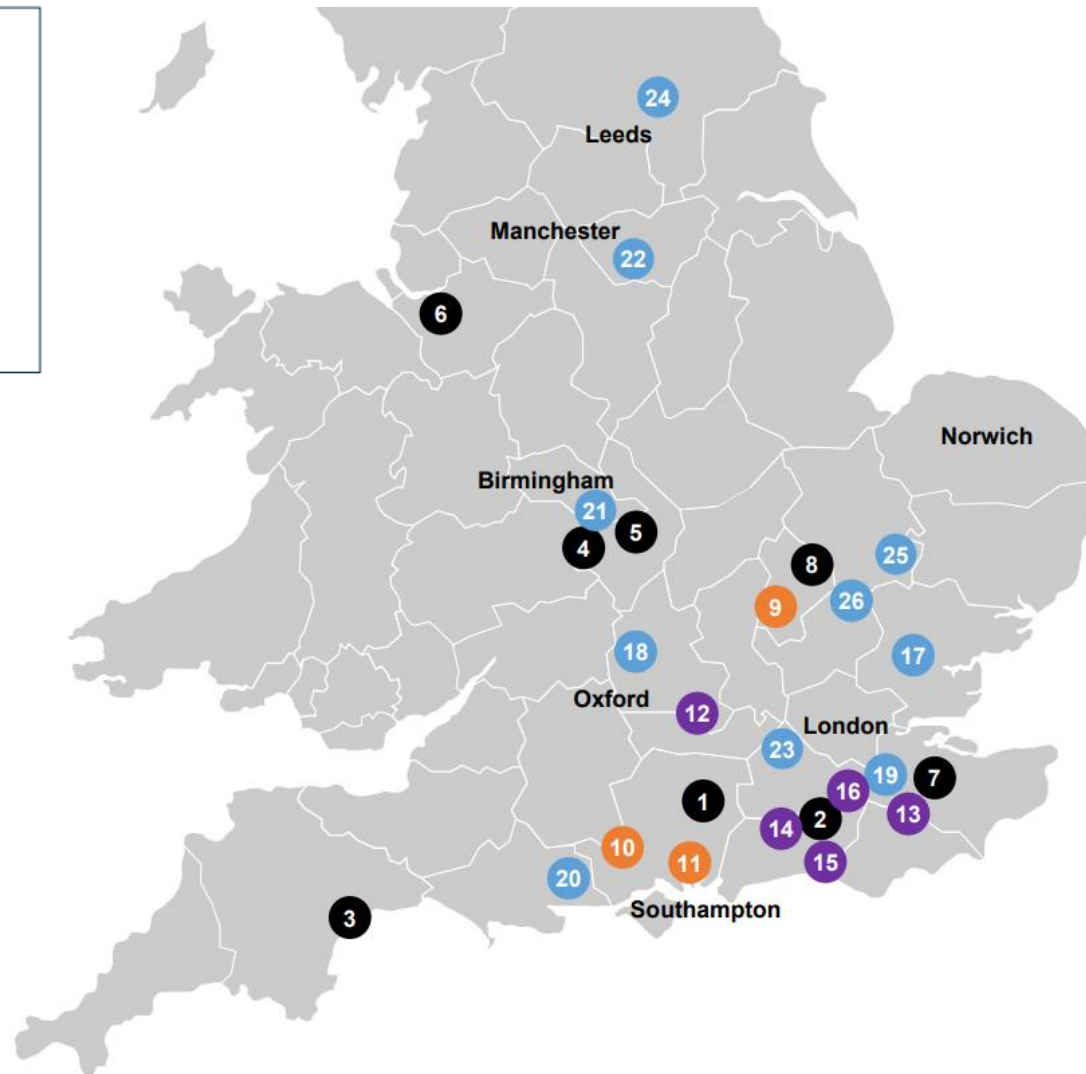
HAPPI Hour - Sustainability and Zero Carbon for an Ageing Population Millfield Green – Net Zero Village

Date: 10th October 2023

Introduction

Key

- Owned : operating
- Owned : under construction
- Owned : pre-construction
- Legally contracted

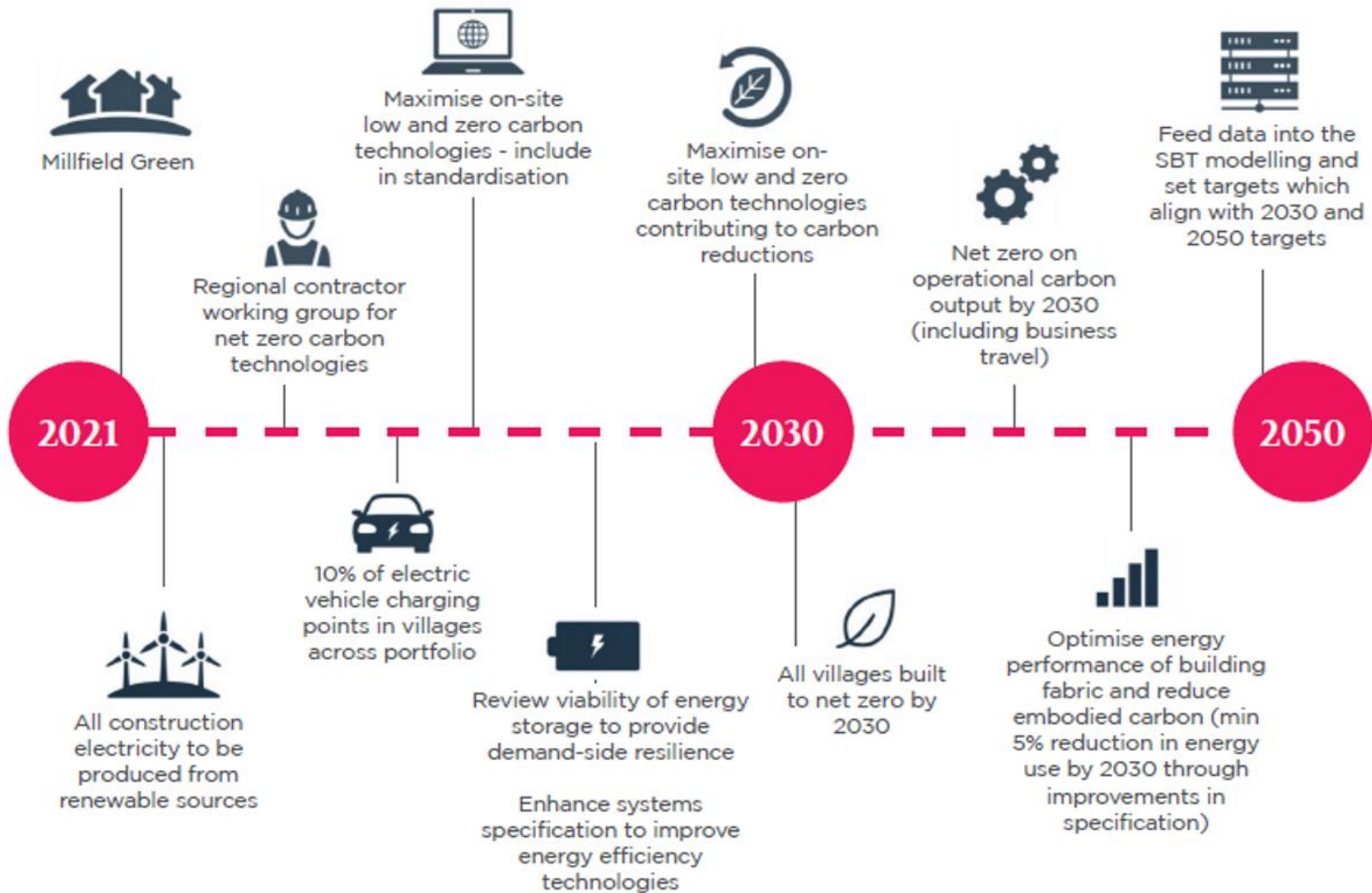


ESGH: Our Approach



Purpose		The <i>best</i> years of your life?						
Vision		We are creating a thriving, greener, healthier and better connected society						
Goals		Climate Positive			Measurable social impact			
Commitments		Zero avoidable waste	Nature positive by 2030	Net Zero by 2030	Create jobs	Deliver place based social impact	Deliver health and wellbeing	Sustainable economic growth
Delivery		Waste reporting procedures	Nature strategy	Our roadmap to Net Zero	Anchoring in our communities	Spending with social enterprises	Inspired Friendships & Wellbeing Navigators	Spending with priority businesses
Measuring progress		2023 Targets						
Governance		Science Based Targets	Taskforce on Climate-Related Financial Disclosures	Taskforce on Nature-Related Financial Disclosures	Annual Reports	The Associated Retirement Community Operators (ARCO)	ESG Governance Structure	

Our Net Zero Roadmap



Millfield Green - Overview



RENEWABLE ENERGY CENTRE



SOLAR PANELS



BUILDING MANAGEMENT SYSTEM



DATA COLLECTION PLATFORM



ELECTRIC VEHICLE ENABLEMENT



GROUND SOURCE ENERGY



Millfield Green – Key Stats

1. Site acquired by Inspired Villages in April 2020.
2. 86 units. Phase 1 includes the Village Centre building and communal facilities including an on-site restaurant, café, library, cinema room, and wellness centre, fitness studio and gym.
3. Phase 1 works commenced on site in March 2021
4. Net zero met through a combination of fabric first, improved U-values and insulation, Mechanical Heat Vent Recovery (MVHR) units, Photovoltaics (PV's) and Ground Source Heat Pumps (GSHP).
5. 21 x 3kW Kensa Shoeboxes installed into the 1-bedroom apartments and 65 x 6kW Shoeboxes installed into 2-bedroom apartments.
6. 5 x high heat output Kensa Q80 ground source heat pumps, provide heating and pre-heating to the domestic hot water for the selection of shared facilities
7. 2 x 15kW Kensa Evo ground source heat pumps provide the final heating of the domestic hot water for the shared facilities to bring it up to temperature.

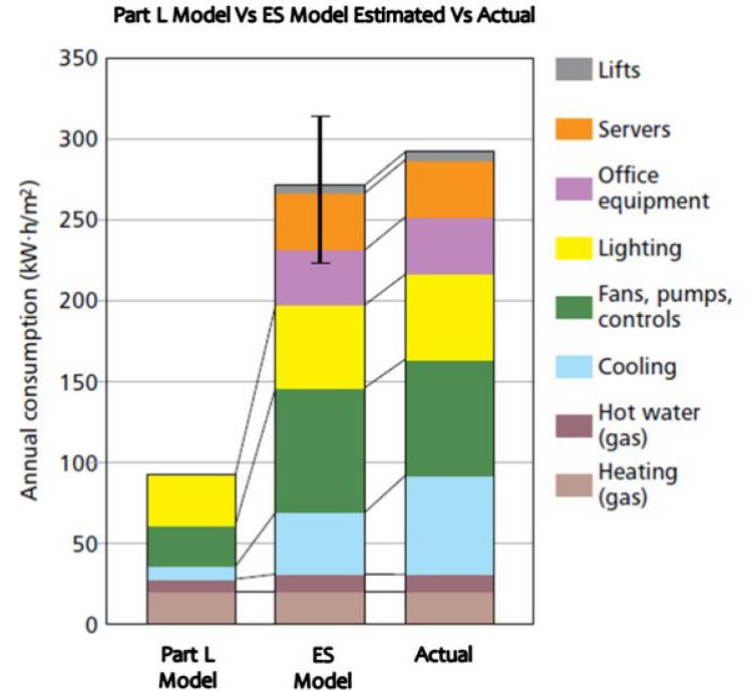
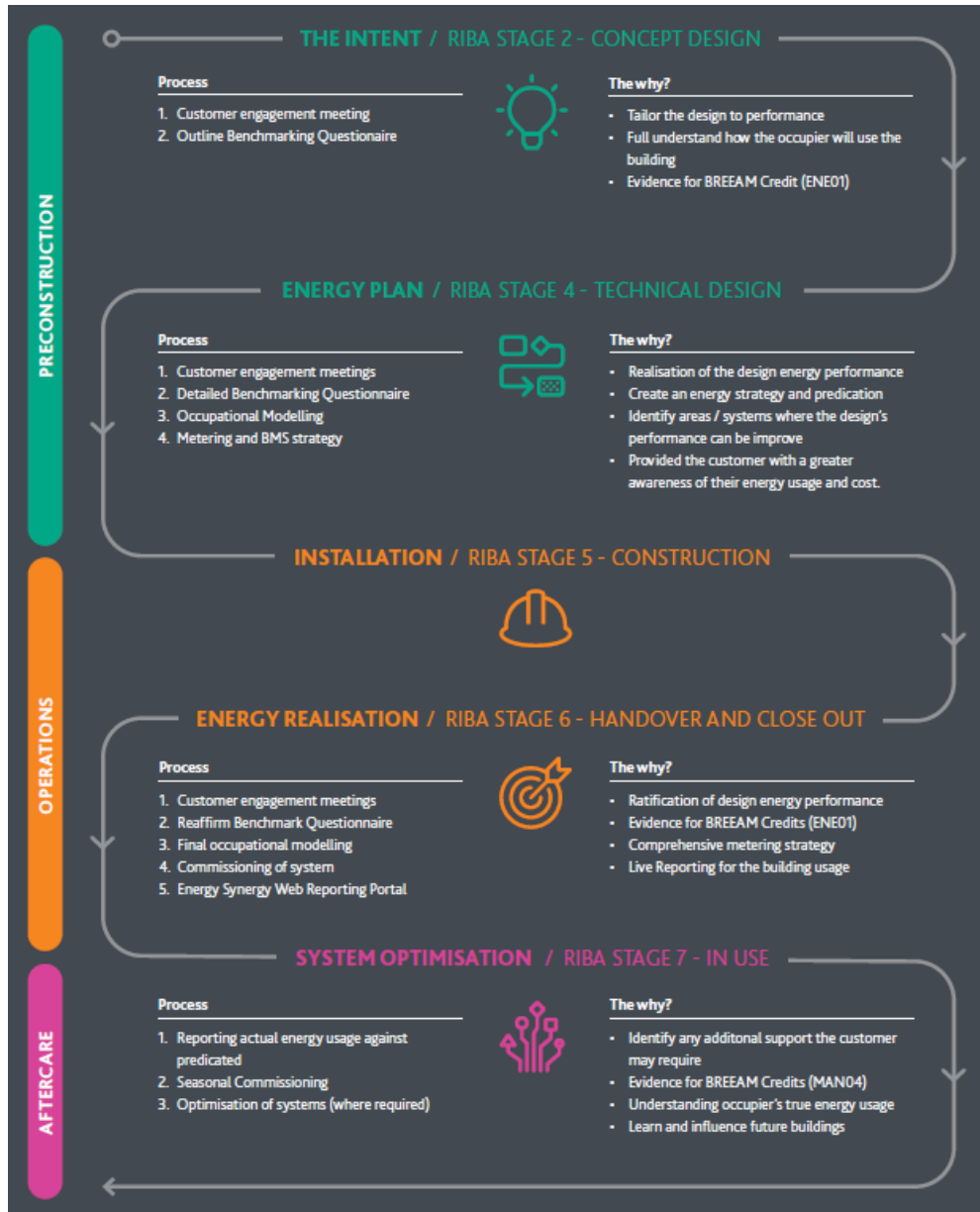
Millfield Green - Photos



Millfield Green - Photos



Millfield Green – Energy Monitoring



General Photos



General Photos



General Photos



General Photos



Links

Link to Video Case study: <https://vimeo.com/605538610>

Link to Impact Report: <https://www.inspiredvillages.co.uk/about-us/our-impact>