



**UNIVERSITY OF
PORTSMOUTH**



Ambient Assisted Living

HLIN meeting, 3rd October 2023

Richard Curry, University of Portsmouth

Background

- Marmot Review

.....poor housing conditions (including damp, cold, mould, noise) are strongly associated with poor health, both physical and mental.”

- Keeping people comfortable and safe and living independently at home should be the goal

Telecare, Assisted Living

- Using technology to care for people
 - Detect emergencies to ensure **safety**
 - Monitor activities to promote **wellbeing**
- Sensors, data processing, interacting with users
 - Wearable
 - Environmental



Smart Home

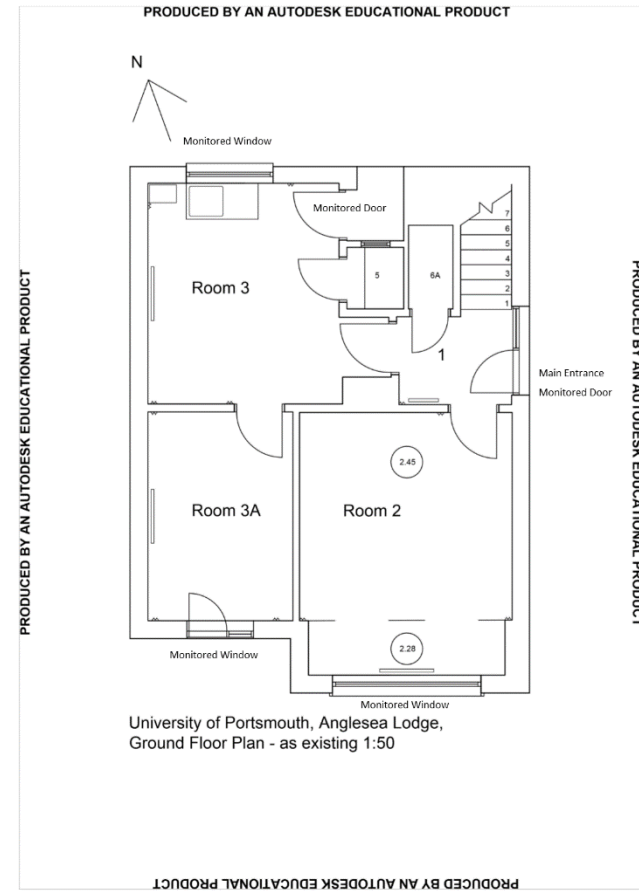


Support Independence in Residential Settings

- Safely undertaking Activities of Daily Living (ADLs) is paramount to living independently
- Sensors around home have been used to infer activity, safety and security
- Use video
 - Rich data source
 - No interference with ADLs
 - Easy to retrofit



Port Eco House – our Living Lab



University of Portsmouth, Anglesea Lodge,
Ground Floor Plan - as existing 1:50

The Care Challenge

- Lack of community care personnel
- Rise in the number of elderly
- Need to work smarter

..... and Response

- Three changes that could help:
- The digital switch over in 2025 which will mean that every house has access to the internet.
- The beginnings of regional and area Integrated Care Services (ICS) which consider the patient journey from community to hospital and back to community.
- The emerging use of Virtual Wards

Summary

- Researchers need to develop ambient assisted living products and service providers need to incorporate them in their offering.
- ICS need to include ambient assisted living as an integral part of providing a home care support service.



**UNIVERSITY OF
PORTSMOUTH**

Thank you!

richard.curry@port.ac.uk

Rinat.khusainov@port.ac.uk

<https://sites.google.com/port.ac.uk/aal-research>

