

Happi Hour

May 2023

Craig White

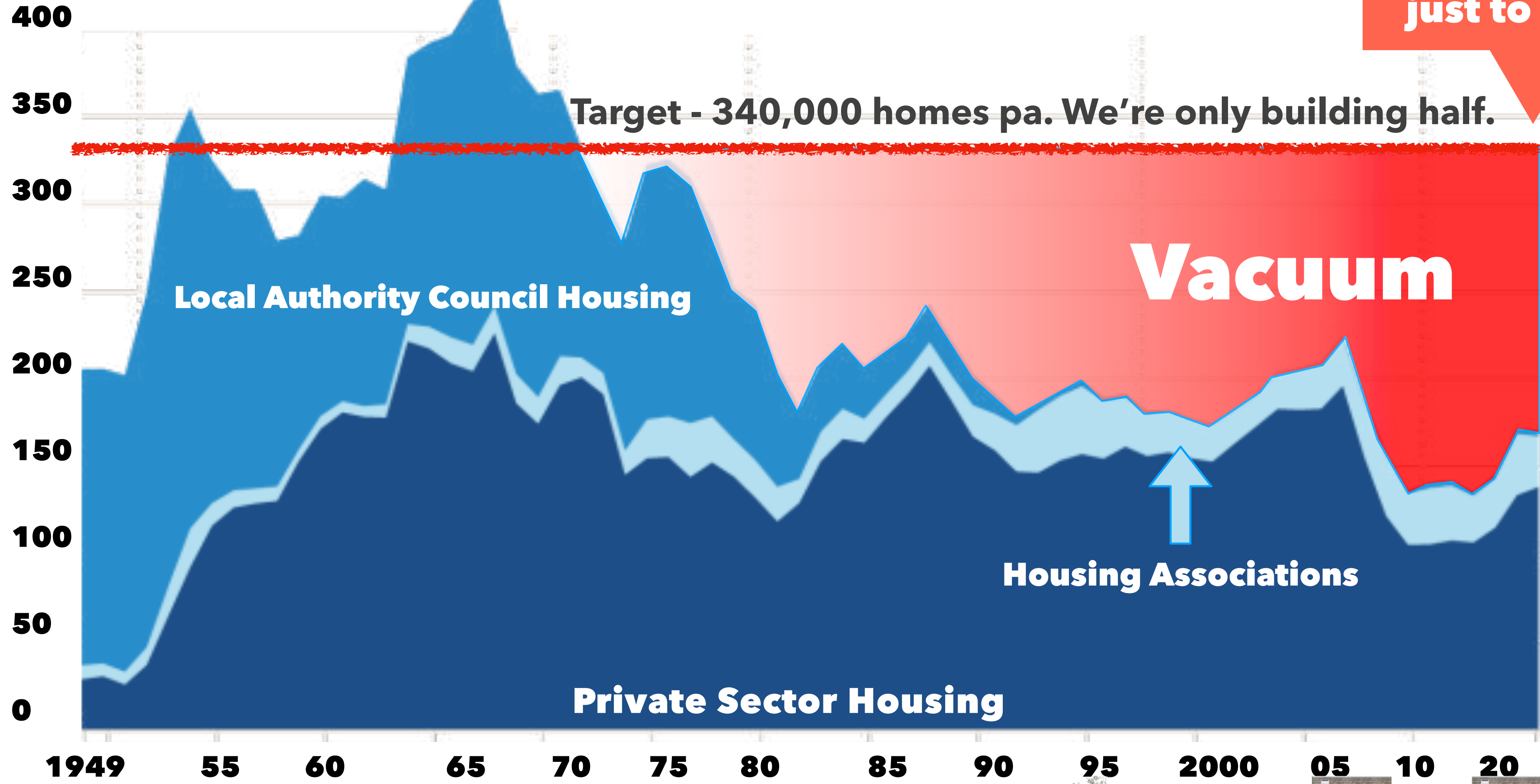


Our Story Has Many Parts

1. The Housing Crisis
2. A Disruptive Development Model
3. New Land Supply that's Free and Hidden
4. Climate Emergency & Carbon Capture
5. New Finance Flows
6. Thinking Small & Scaling Fast
7. Reducing Reoffending
8. Properly Affordable Homes
9. People Planet Profit Purpose



The Problem - Our Housing Crisis



We need to build 170,000 more homes every year, just to meet demand!

Our Market £54bn



Our Solution

We built an Agile Home:

- **on land hidden in plain sight**
- **to the highest standards**
- **without requiring planning permission**
- **we did it in just 10 weeks**

We call it: **tam**

Transportable Accommodation Module



The product, characteristics and costs

Tam is an MMC house on a chassis:

- Space Standards, B-Regs & the 2025 Future Homes Standard
- Low carbon & energy efficient
- Delivered in 12 - 20 weeks
- Housing Industry Standard 60 year Design Life
- Mortgageable
- Qualifies as 'Recoverable Capital'

**Agile is the key to unlocking a land supply that's
New, Free & Hidden in Plain Sight**

5 Typical Sizes 1 - 4 Bedroom Layouts

XS £66k



S £102k



M £130k



L £160k



XL £225k



Prices include delivery to site, erection and typical connection to utilities.

Prices exclude 5% VAT & Localisation Costs.



Agile Build Systems - It's a two horse race

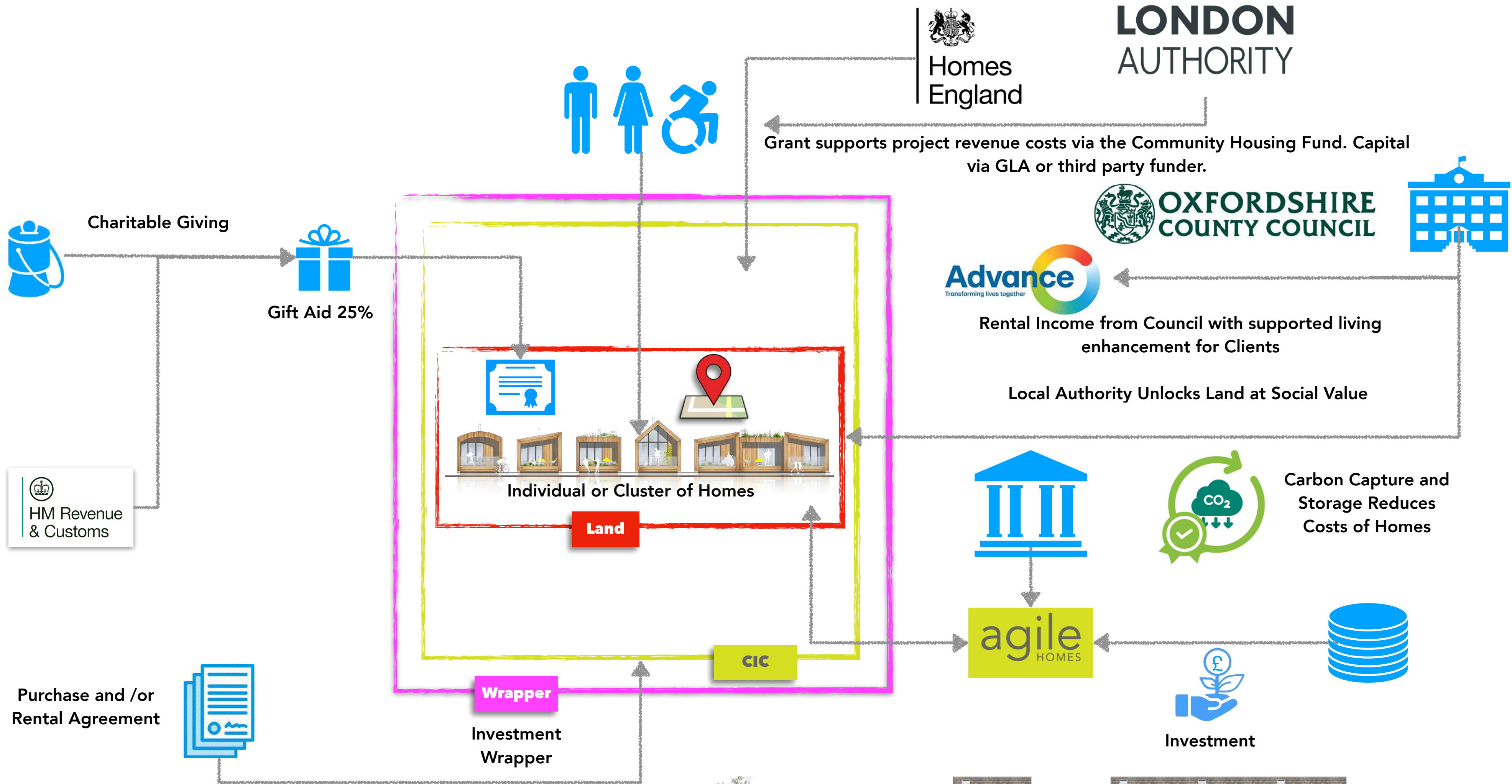
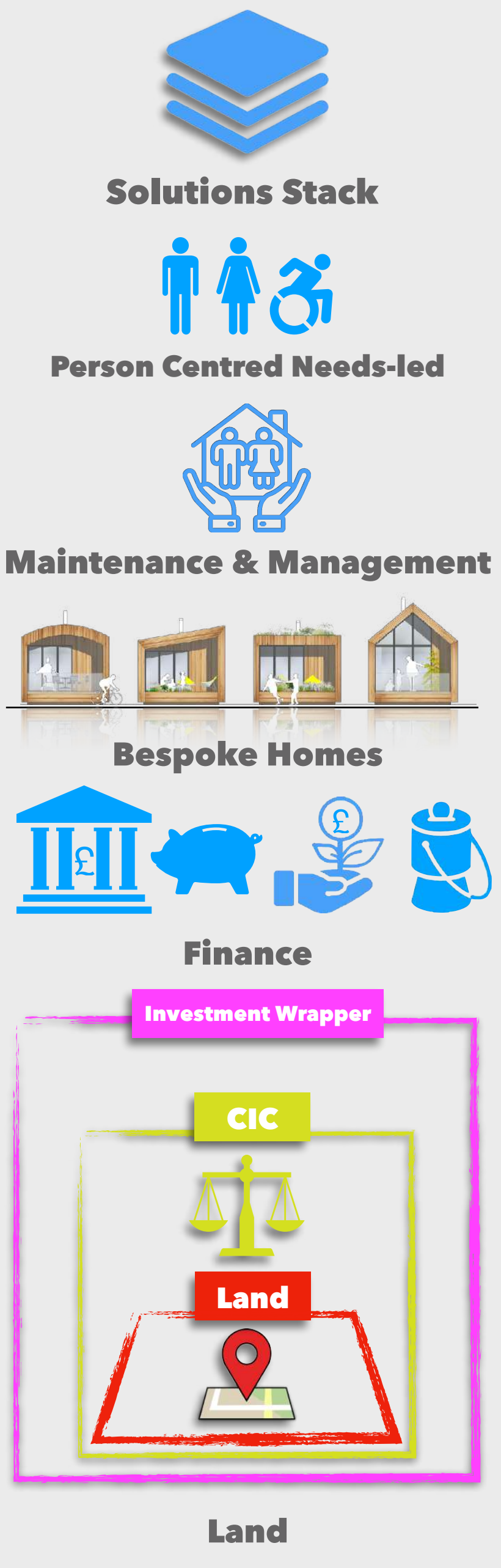
Core product is an Ikea-like flat-pack build system.

Agile prefabricated panels can be used to build Tam, conventional housing, commercial, retail & education projects.

All these designs for homes use this core product.



Building a Housing Solutions Stack



Unlocking Land - Land Free and Hidden in Plain Sight

Urban Acupuncture

Rooftops



A 7% densification
560,000 new homes.

<https://wecanmake.org/>

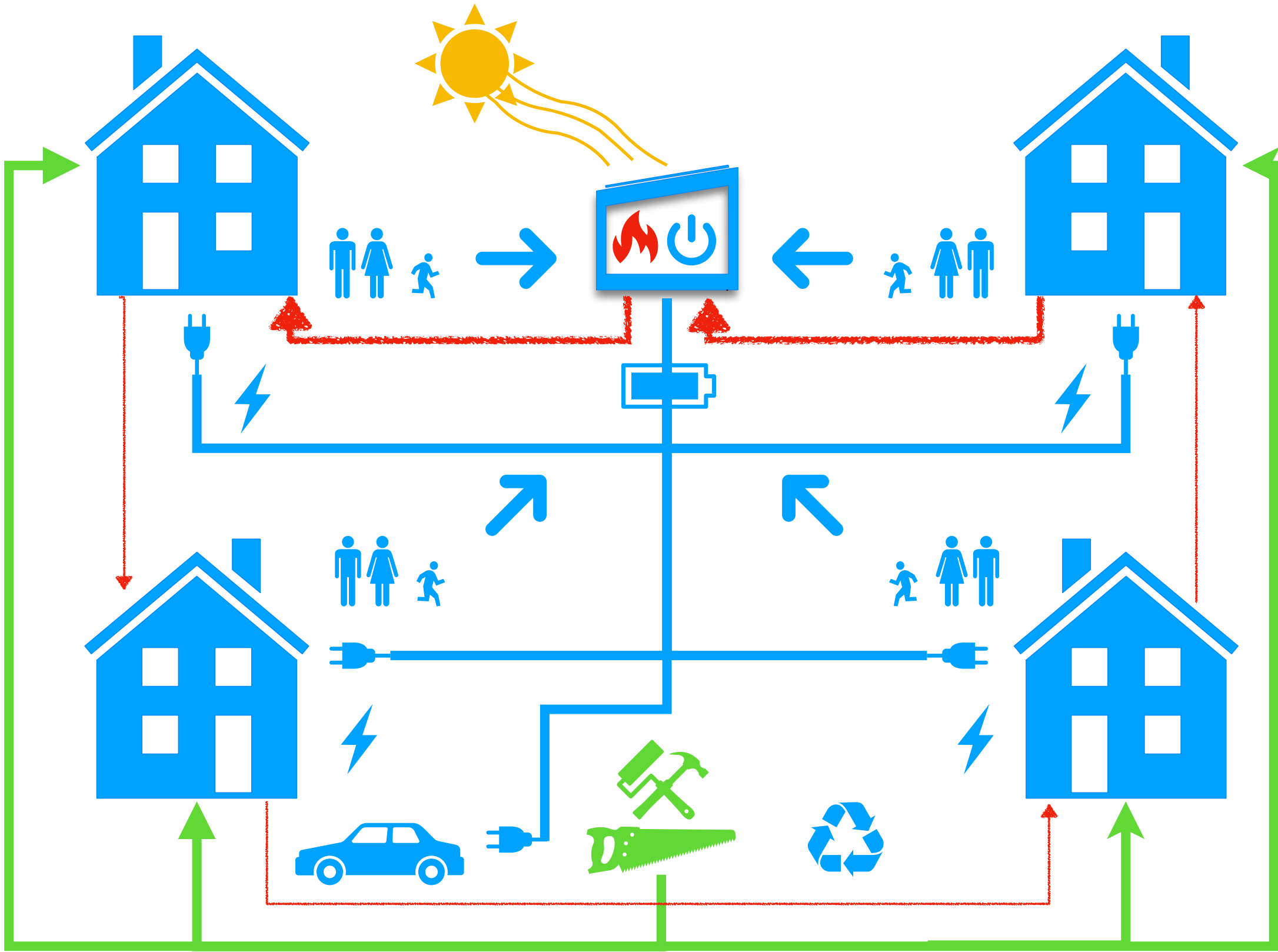


Land Solutions - reHAB Community-led Opt-in Rolling Retrofit

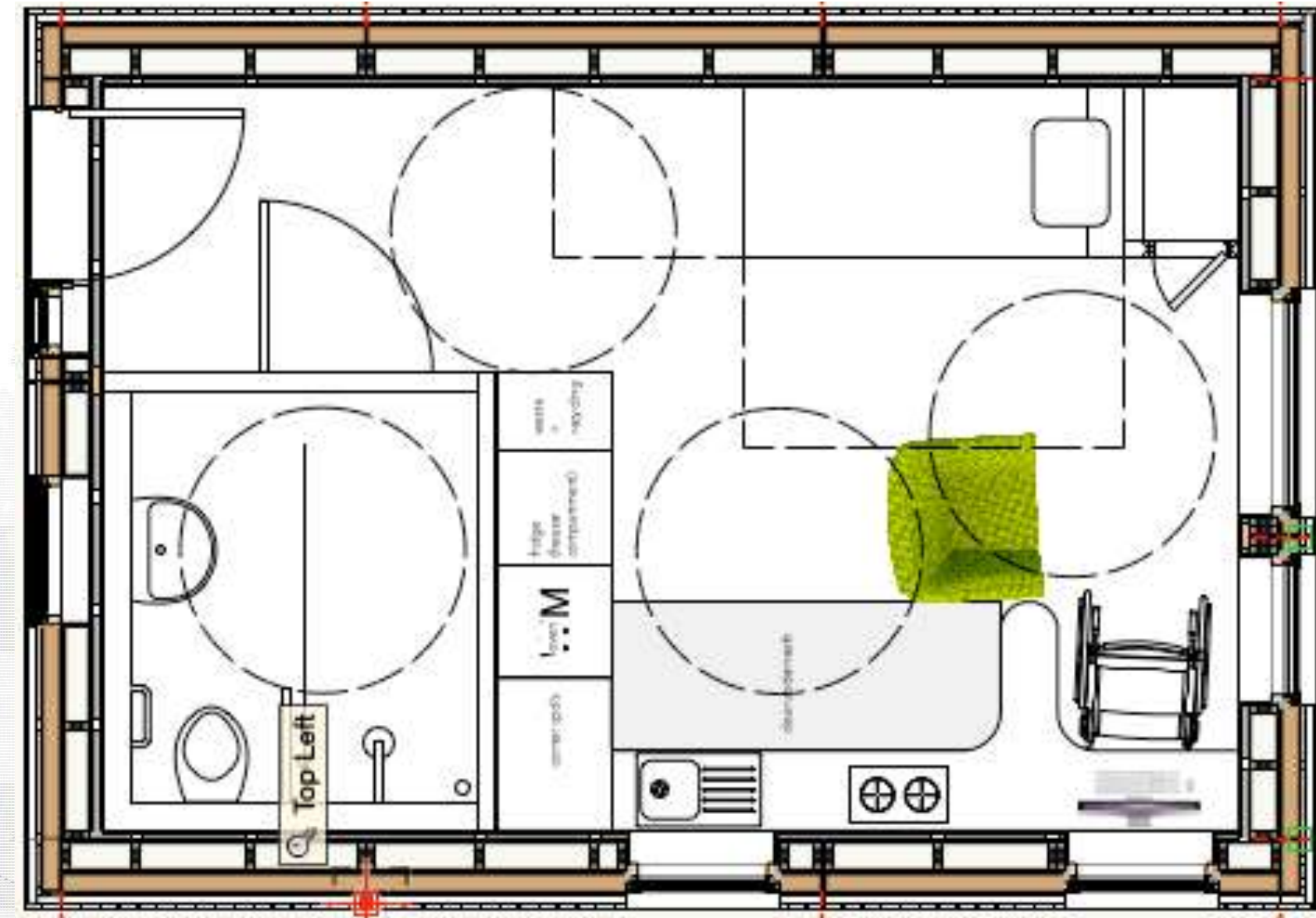


reHAB - Rethinking Retrofit. Horizon 2020 Green Deal.
reHab is a people centred, behavioural-led, opt-in, deep retrofit model. It works across a wide range of building typologies, using appropriate technological solutions, in low to medium density housing estates. reHAB is:

People Inclusive - Typology Responsive - Technology Agnostic



Places for People Stonebridge Park - £6.2m across multiple sites



Project Name: Stonebridge Park

Description: Additional 7 bedrooms for Places for People

People story: Providing people with addictions more independent living space as they transition back to society.

Status: Planning Application Submitted

Project value: Construction: £650 k

Construction Start: Late Q3 23



Halton Senior CoHousing Project - Interlocking layout

- 14 homes
- 2 Tiny Homes



Halton Senior CoHousing Project - Interlocking layout



A flexible labour force - politically & societally game changing

Front cover of the Times.

- Prison workshop manufacture.
- Skills, training & education in MMC.
- Transform employment opportunities.
- Reduces risk of reoffending and homelessness.
- Reoffending costs the UK £18bn per year

We call it Distributed Manufacturing.

- Low capital investment, lower-cost, localised, demand-led and lean.
- Onsite we use local skills, labour and materials.
- Creating local jobs and stakeholder ownership of our projects.

We scale delivery through public & private prison workshops and commercial supply chains.





Welcome to CLiCs Centre for Low & Innovative Carbon Solutions

Addressing the Housing Crisis and Climate Emergency

Certified Skills Training and Paid Work Opportunities that change offenders' lives, create pathways to meaningful employment and reduce reoffending





Bron Afon - Ty Rosser Gwyn



Victory Oak



Yeotown



Spider Cranes



Modular Children's Homes

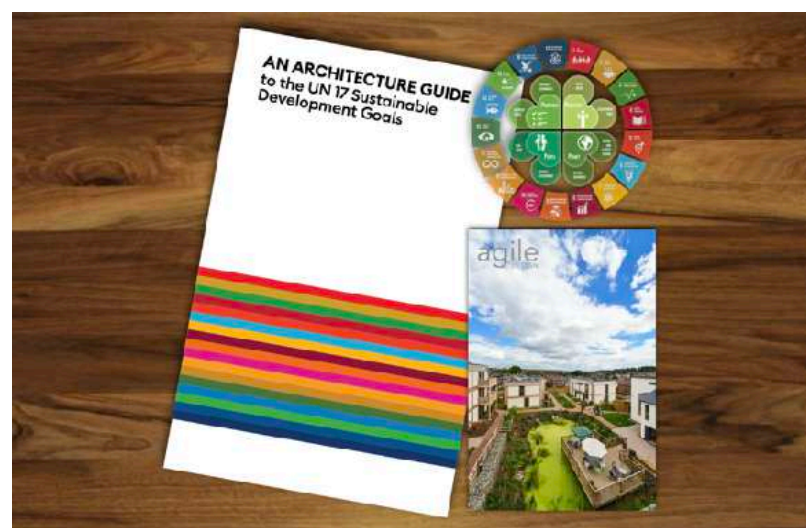


Modular Innovation

LILAC CoHousing Leeds



United Nations SDG17 Exemplar



CoHousing & Community-led homes



Minety



Rochester Avenue



Sharnford PassivHaus



PassivHaus, Hotel Leisure & Tourism



St Peters Bristol CC



Redlynch



Council & Housing Association homes



Portway

Open Market homes



Happi Hour

May 2023

Craig White

