



ISPA

Intersectional Stigma
of Place-based Ageing





PRIMARY AIMS →

OBJECTIVES

- **Investigate the lived realities of disabled adults with sensory and mobility impairments, identifying how different types of stigma (related to age, disability and place) converge to produce added barriers to living inclusively.**
- **Co-produce an innovative Inclusive Living Toolkit to include the experiences of older disabled adults and use it to facilitate organisational change that supports accessible and inclusive practice in homes and neighbourhoods.**

1: Understand the lived experiences and contextual effects of intersectional stigma for disabled adults, specifically with mobility and sensory impairments via qualitative and quantitative secondary analysis and a new qualitative longitudinal dataset.

2: Explore the potential of 'ageing-in-place' and place-based practical solutions in housing practice to tackle intersectional stigma and inequality via accessible homes and communities.

3: Build research capacity through establishing a group of older (65+) disabled community peer-researchers who will research the lived experiences of disabled people and their experiences of intersectional stigma.

4: Develop an existing Inclusive Living Toolkit to integrate lived experience of disabled older adults to tackle inequalities related to accessibility via home and neighbourhood modifications and support ageing-in-place.

5: Facilitate organisational change via a newly developed Inclusive Living Toolkit to deliver practical interventions that support accessible home and neighbourhood modifications.

6: Monitor and evaluate change and tangible impact instigated from 3-5 to determine the extent to which home and neighbourhood modifications can reduce stigma related to perceptions around adaptations, ageing, place and disability and how these impact on inclusion.

MEET THE TEAM



Dr Vikki McCall
Principal Investigator



Julia Lawrence
Project Co-ordinator



Professor Rose
Gilroy



Professor David
Manley



Jeremy
Porteus



Professor Alasdair
Rutherford



Dr Dianne
Theakstone



Debs
Allan



Dr Kim
McKee

Making Change via
Inclusive Living
(WP5)

Exploring the
representation of
disability in homes and
neighbourhoods
(WP1)



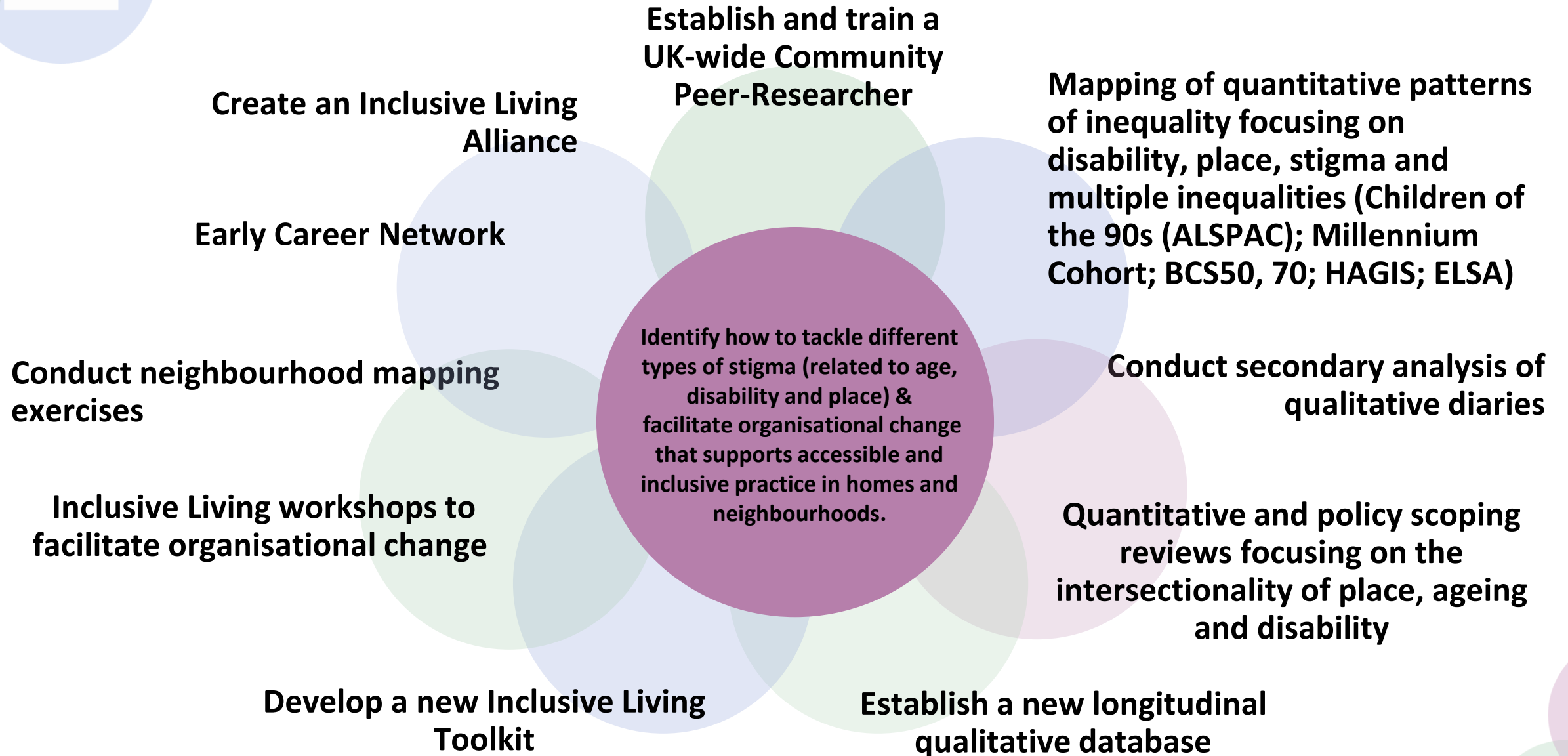
Dr Louise
Reid

Co-production and
building a cohort of
disabled Community
Peer-Researchers
(WP3)

Connecting 'ageing-in-
place' to lived
experiences of stigma
(WP2)

Tackling inequalities via
organisational change,
policy and practice
(WP4)

WHAT ISPA WILL DELIVER





ALL ARE WELCOME TO OUR EMERGING INCLUSIVE LIVING ALLIANCE

- Foundations
- The Digital Health & Care Innovation Centre (DHI)
- Public Health Scotland
- Horizon Housing Association
- Springfield Properties plc
- Link Housing Group
- Motionspot
- Stonewater Housing Association
- Artlink Central
- The Association of Local Authority Chief Housing Officers (ALACHO)
- Scottish Commission for People with Learning Disabilities (SCLD)
- Care & Repair Scotland
- Care & Repair Cymru

For more detail, please feel free to e-mail me!

vikki.mccall@stir.ac.uk



Dr Vikki McCall
Principal Investigator

