

The logo for Aster Group, featuring the word "ASTER" in a large, dark blue, sans-serif font, with the word "GROUP" in a smaller, purple, sans-serif font directly below it. The logo is positioned within a yellow triangular shape that points upwards and is set against a dark blue background.

ASTER
GROUP

Grace House 2022

Julia Ashley, Business Development Director - Aster Group



Grace House

A blueprint for accessible and affordable over 55s living

170 apartments, communal facilities, gardens – over 55s mixed tenure

Replacement for a 1970 built sheltered scheme

Opened 2022 by Lord Best

Modern accessible living

Adaptable

Prominent position in Westminster

Co-designed with residents

Motionspot

C&C
LONDON HOMES
SINCE 1926
ASTER

REGAL
LONDON

Ryder



Level access thresholds

Wide doorways

Power assisted communal doors

Clear wayfinding & signage

Accessible products

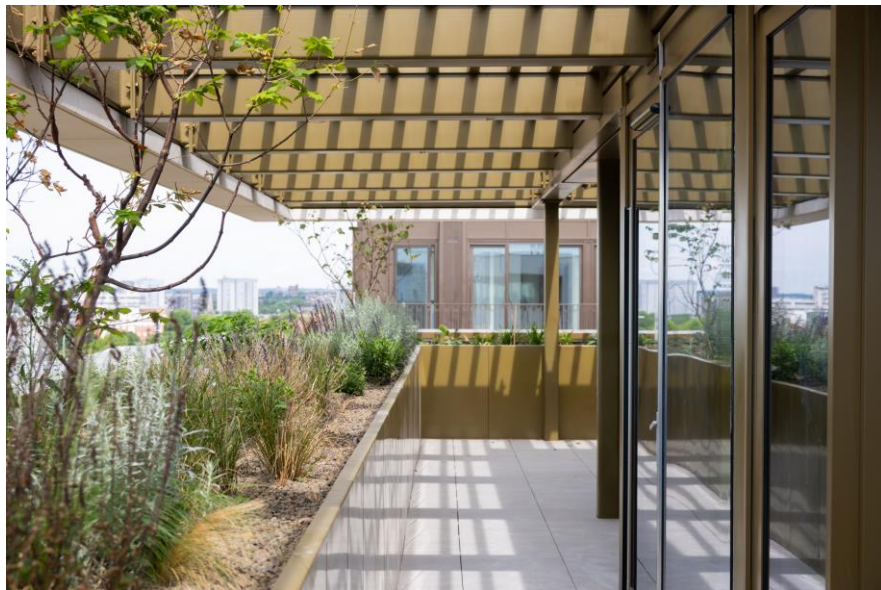
Good contrasty

Connectivity with nature / outdoor space

Connected technologies

Sustainable design







●●
Grace House is 100% better than Dora House was. There's no comparison. It's much more suitable for friends and family to visit. It's big, clean, and modern. We have a lovely balcony and wonderful view. You've got your own outside space, a modern kitchen with a dishwasher that we didn't have before. It's just so lovely. It brightens your whole outlook. It's absolutely been worth the wait.

●●

Lee Smith, a 'Dora Designer' and resident of both Dora and Grace House

Motionspot

C&C
LONDON HOMES
SINCE 1926
ASTER


R E G A L
L O N D O N

Ryder

