

Richmond and Wandsworth Councils

Putting people at the heart of new housing development: Coproducting the place we call home



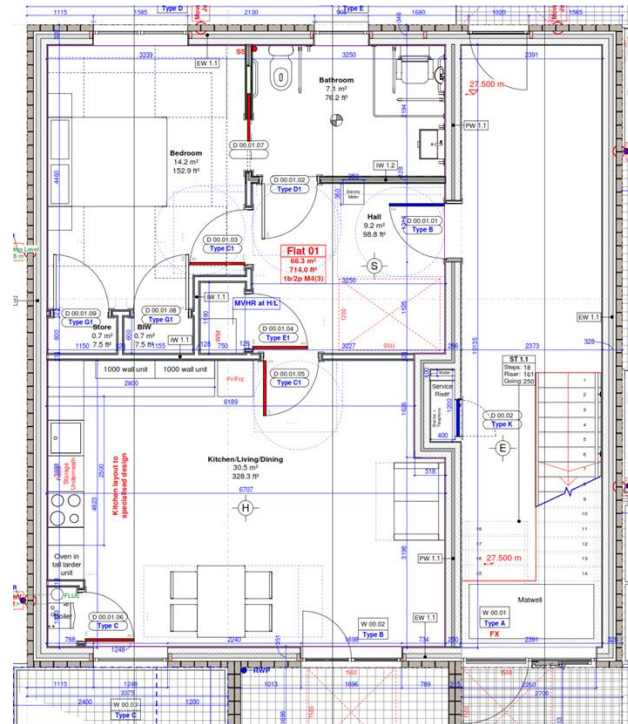
Specialist Housing Occupational Therapists employed within
housing regeneration, development and enablement teams

1 November



Housing Occupational Therapists champion the design and build of inclusive, accessible and adaptable homes

- Enablement
- Development
- Regeneration



People at the heart...

- Resident centred
- Inclusive and contemporary
- Long term and strategic
- Resource savings



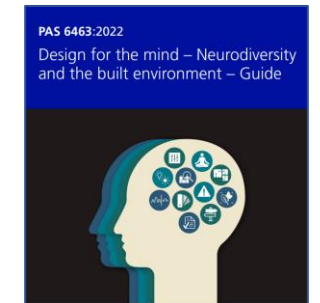
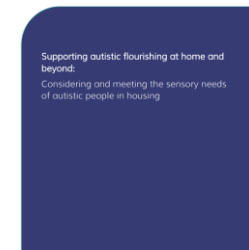
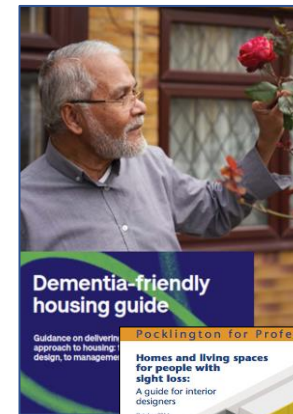
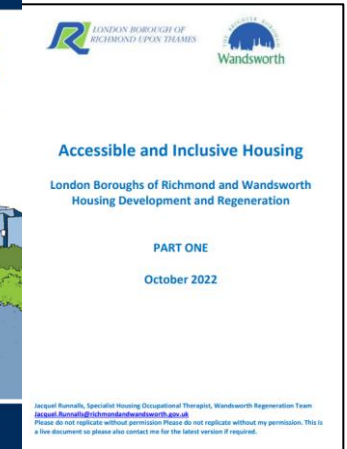
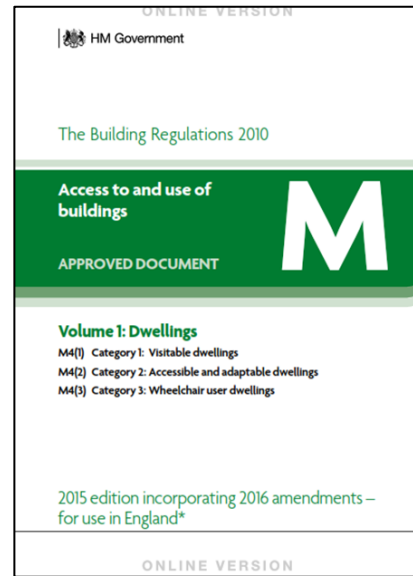
Coproducing the place we call home...

- Internal and external colleagues
- Supported housing and extra care housing



Our work:

- Partnership
- Training
- Writing
- Policy
- Identifying
- Presentations



Wandsworth Estate Regeneration

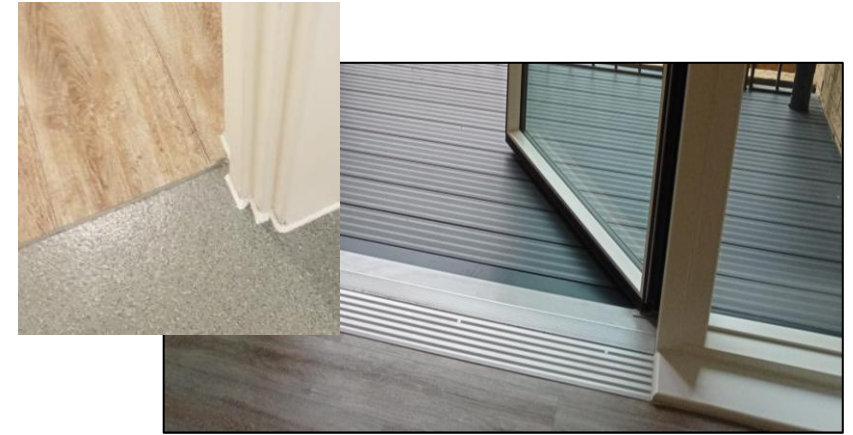
- Winstanley York Road, Battersea [York Gardens | Home \(winstanleyyorkroad.co.uk\)](http://YorkGardens|Home(winstanleyyorkroad.co.uk))
- Alton, Roehampton (under review)
- Satellite sites, purchasing/adapting homes
- Extra Care Housing Development



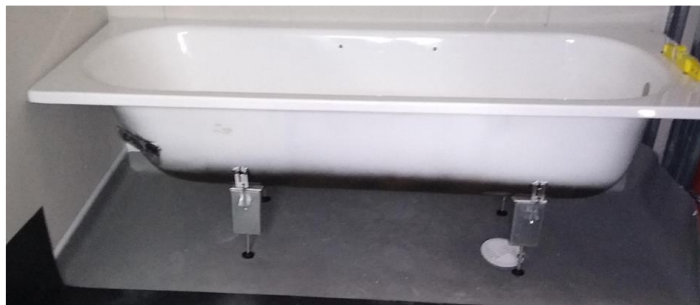
Regeneration Housing OT Role - Overview

- Unique role which provides wide-ranging benefits
- Work with Regeneration/JV team, tenants/families, LA/Health, Housing/Development, planners, designers, contractors, manufacturers
- Visit and assess disabled and older tenants specific housing requirements – new build and early moves, purchasing & adapting properties, involvement throughout and on moving in/POE
- Provide advice on all aspects of inclusive and accessible design from pre-planning through to completion/POE including regular site visits
- M4(2) & M4(3) neighbourhood/landscaping/public realm
- Detailed recommendations of fixtures & fittings for all homes, including guidance/ER's

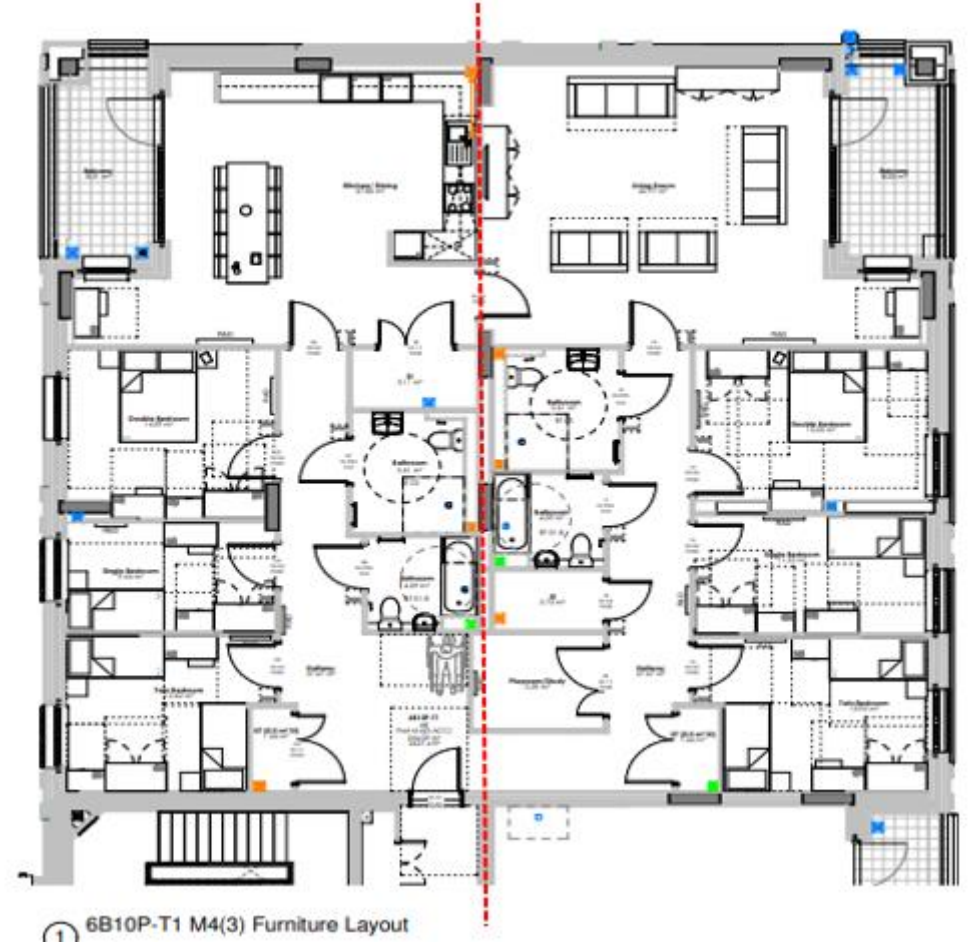
M4(2) & M4(3) Fixtures & Fittings



Housing OT Role - M4(2) Accessible & Adaptable Bathrooms



Housing OT – Meeting resident need



M4 (3) wheelchair accessible homes

