

# Putting People at the Heart of New Housing Development

Claire Astbury

**LIN Webinar 1 November 2022**

# People at the Heart of Care White Paper :

## Chapter 4 Housing

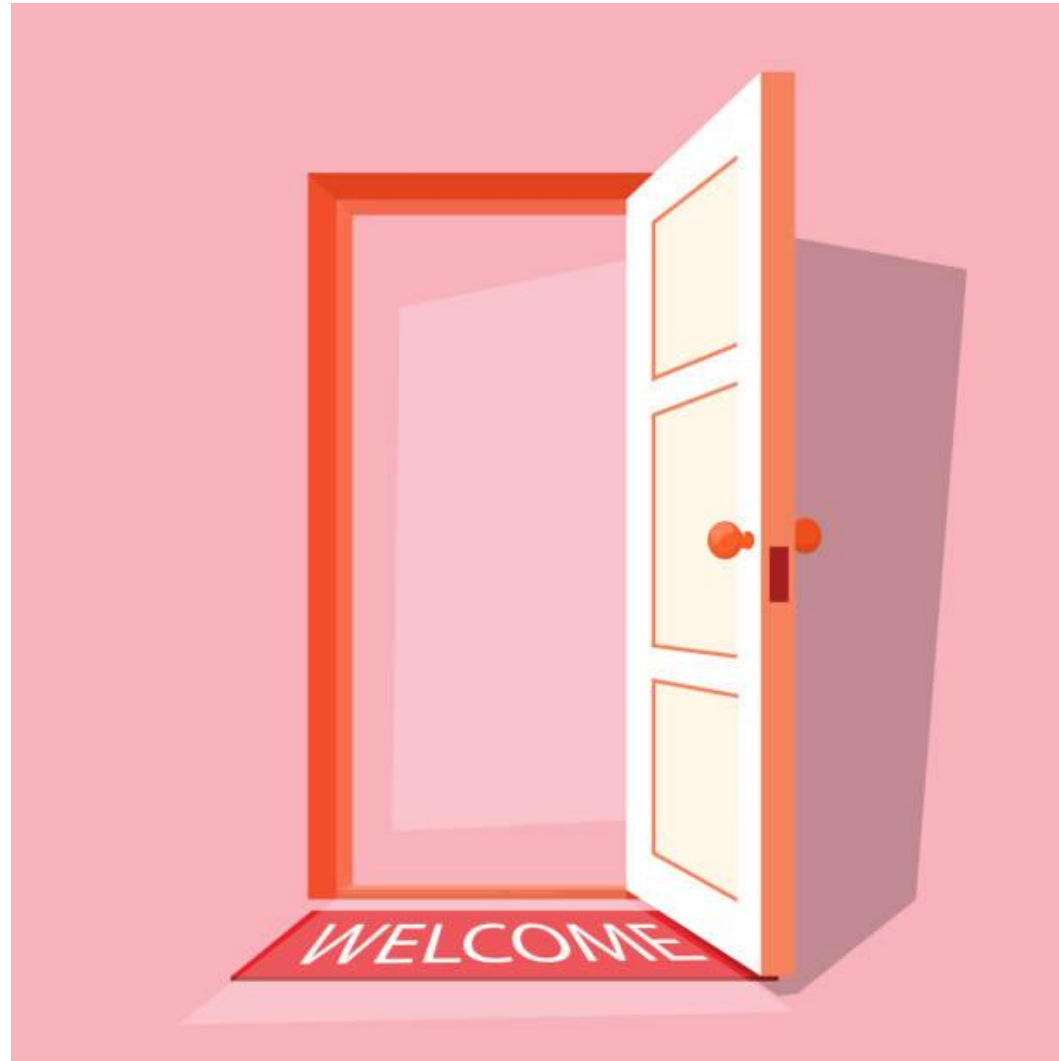
### **Providing the right care, in the right place at the right time.**

Making every decision about care a decision about housing

Using the full potential of technology to support people's lives and aspirations

Building a system that can develop and adopt new ways of providing care and support to people at scale

Focusing on prevention and health promotion to support people to live healthy lives for longer.



**Inviting housing expertise into social care discussion**

## Getting started with our housing guide

- Gather the right range of expertise
  - Housing strategy, housing providers, housing developers, planning, health, social care, funders, sector experts, lived experience
  - Especially important to connect into district councils in two-tier areas

What happened: brought together a steering group of around 25 people

- Scoping the work
  - What element of housing did we want to focus on?
  - Which social care cohorts?
  - How might we tie the information together?
  - How do we honour and reflect coproduction and lived experience?

What happened: agreed on newbuild only, across social care cohorts, organised the information by strategic/operational stage, listened to lived experience and prioritised examples which showed engagement

## Timeline February – October 2022

- February: Established regional housing working group
- March: Agreed ToR for the working group and scope for the work  
Requested case studies
- April: Check in with Curators of Change to respond to coproduction  
Deadline for case studies – 35 received
- May: Reviewed case study examples with editorial group  
Specialist coproduction review of case studies  
Working group agreed outline draft
- June: Editorial group and main group signed off the text  
Work commenced on launch event
- July: Design work commenced
- August: Guide finalized
- September: Final launch planning
- October: Launch event  
Guide published

## Guide Includes:

Introduction – including coproduction group input, response to climate change, new technologies ...

Chapters on

- Partnership and collaboration – strategies, partnerships and plans
- Models of delivery – what are the building blocks?
- New housing including co-housing, supported and older peoples housing.
- Resources and guidance

## Launch Event 7/10/22

- In person event around 80 delegates attended from Planning, Housing, Districts, Adult Social Care, ICBs, non statutory sector and people with lived experience
- Heard from speakers on examples from the guide
- stimulated thinking about coproduction in partnerships in relation to new housing development
- Provided a networking opportunity for people with different perspectives on housing
- Also heard from people who use housing, care and support services.
- Chance to discuss future opportunities locally and regionally

# Putting people at the heart of new housing development

**Coproducing the place we call home**



Directors of  
**adass**  
adult social services  
eastern region  
connecting innovating improving

A Best Practice Guide to integration,  
partnership working and coproduction across  
Housing, Adult Social Care and Health

East of England Adult Social Care **2022**



## Personal learning points

- First project of a series
- Value of established coproduction
- Importance of translators and connectors
- Focus on what is possible **and** what operating environment enables the best projects to be possible