



Park Grove Design

UNIQUE INTERIORS
SINCE 1993

PARK
GROVE



About us

Established in 1993, Park Grove creates unique and memorable schemes for a wide range of clients within the commercial sector, specialising in care and retirement projects. Our dedicated and experienced team turn-around creative and award-winning interiors from concept and design detailing through to procurement and fit out. We have no prescriptive style. Instead, we interpret the needs of our clients creating truly inspiring, timeless interiors...



Our Team



Carly Gordon
MANAGING DIRECTOR



Lori Pinkerton-Rolet
DIRECTOR



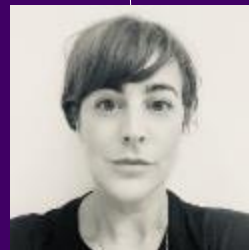
Emma Andrews
MARKETING MANAGER



Deborah Gordon
ACCOUNTS



Nicolla Newsom
SENIOR INTERIOR DESIGNER



Georgina Chamberlain
FF&E DESIGNER



Vivien Obbagy
INTERIOR DESIGNER



Samantha Acquaye
PROJECT MANAGER & PROCUREMENT

03

Freelancers
3D, CAD & DESIGN SUPPORT



James Granger
DESIGNER & 3D VISUAL



Kathryn Dennison
DESIGNER & 3D VISUAL



Rajinder Singh
CAD TECHNICIAN



Jessica Smith
PROCUREMENT & LOGISTICS

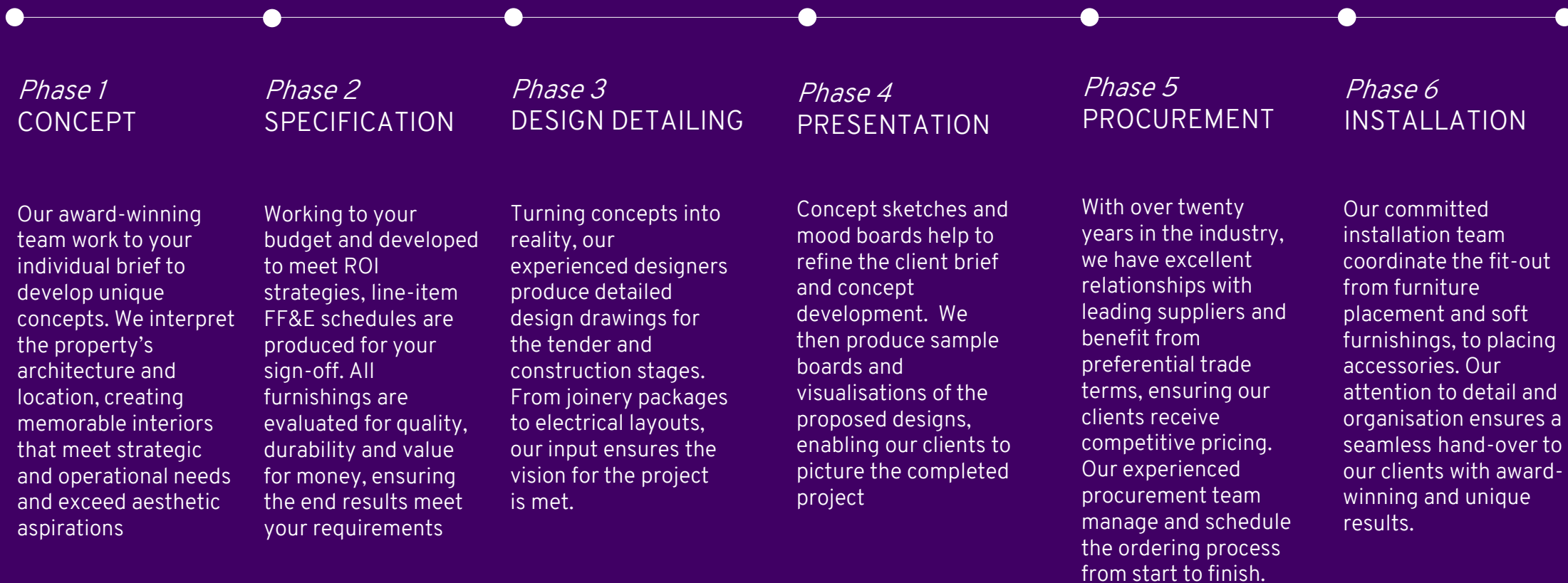


Lucy Baker
INSTALLATION SUPPORT

Freelancers
INSTALLATION SUPPORT



Our Services



Brief

Design Activity- Based on LCE dwgs. 12849 series an 15895 series for 40 Bed Care Home, 32 Extra Care Apartments, 8 Extra Care Cottages, Club House, plus show flat/apartments if required	Responsibility			Notes
	Lead role	Drawings to others	Liasing with others	
1.0 Research Operations, Sales & Marketing, Development	✓			
Architects			✓	
2.0 Scheme Development				
Sketch drawings and development of concepts	✓			
Schematic drawings	✓			
Sample Boards	✓			
Computer visualisations (for Bar, Restaurant, Multi-purpose & Care Home FOH)	✓			
General arrangement plans- until client approval is agreed	✓			
Amendments to schemes as per client or consultant requirements- x 3 no.	✓			
3.0 Design Details				
Floor finishes plan with information for screed levels by others	✓			
Ceiling and lighting plans		✓		
Ceiling finishes plan	✓			
Wall finishes plan (to include tiling)	✓			
Floor, Ceiling and Wall finish schedules (to include tiling) for supply by others		✓		
Decorative luminaire schedule	✓			
ID-related cabling positions & electrical circuits (front of house only)		✓		
Detailed design drawings (as required, including specialist joinery)	✓			
Principal Elevations	✓			
Setting out drawings (including tiling)	✓			
Surface finish schedules for Bathrooms, en-suites and kitchens as needed		✓		
Review of shop drawings by others				
Review of manufacturer's drawings by others				
Specialist drawings (as required)		✓		
4.0 Liasing with others				

IMPORTANT: Final document will relate to specified Site Plans					Additional information
	Architect	Interior Designer	Other		
1. Ground Floor					
Entrance Lobby	A	L		M & E, health equipment, fire, call systems, internet, television by others-	
Bistro/Dining	A	L		with positioning drawings and finishes by Architect or Interior Designer as noted	
Corridors	A	L			
Lounge	A	L			
Conservatory	A	L			
Cinema	A	L	A		
WC's x 2	A	L			
Housekeeping Store	L	A			
General Manager's Office	A	L			
Support Office	A	L			
Nurse's Support	A	L			
Marketing Suite	A	L			
Laundry	L	A	A		
Resident Apartment setting out	A	L			
Medical Store	L				
Spa Bathroom	A	L			
2. First Floor					
Library	A	L		M & E, health equipment, fire, call systems, internet, television by others-	
Medical Store	L			with positioning drawings and finishes by Architect or Interior Designer as noted	
Private Dining	A	L			
Corridors	A	L			
Restaurant	A	L			
Stores	L				
Sluice	L				
WC's x 2	A	L			
Nurses Station	A	L			
Spa Bathroom	A	L			
Dementia specific Resident Rooms	A	L			
Dementia specific Resident En-Suites	A	L			
Activity Room	A	L	A		
Kitchen	L	A	A		
Dementia specific Resident Rooms & En-Suites	A	L			
3. Second Floor					
Kitchen	L	A		M & E, health equipment, fire, call systems, internet, television by others-	
Medical Store	L			with positioning drawings and finishes by Architect or Interior Designer as noted	
Stores	L				
Sluice	L				
Quite Room	A	L			
Coffee Room	A	L			

REFERENCES TO DRAW FROM

Royal Hospital physic gardens

Though we no longer produce our own medicines, the Royal Hospital Chelsea continues to provide healthcare to our resident veteran community in the latest chapter of a distinguished and unbroken history of medical care.

Showcasing our glorious grounds – thanks to a National Lottery grant
22nd October 2019

Gardens & Grounds Lottery Heritage Fund
Heritage

The Royal Hospital Chelsea is delighted to announce that we have been awarded a grant of £62,500 from the National Lottery Heritage Fund to re-examine the natural heritage of our grounds and gardens.



- CONNECT HISTORIC WORKS TO THE NEW BUILDING REFURBISHMENT
- PERHAPS CELEBRATE THIS HISTORY IN NEW LANDMARK DESIGN IN RECEPTION WALL



REFERENCES TO DRAW FROM

Royal Hospital Heritage

Symbolism Great Hall mural – Father Thames, depicted holding a cornucopia symbolising abundance and nourishment, and Lady Justice who appears with a sword and balance.

Flags (replicas) of wars against Napoleonic France

Wooden panels depicting every conflict of engagement by the British army since establishment in 1660's



HOME OF THE CHELSEA PENSIONERS

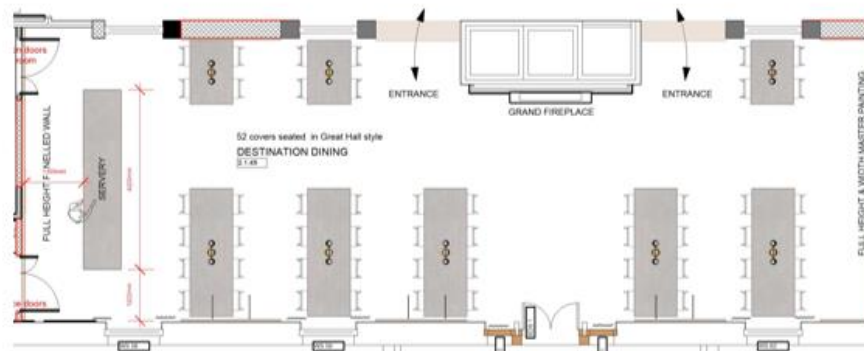
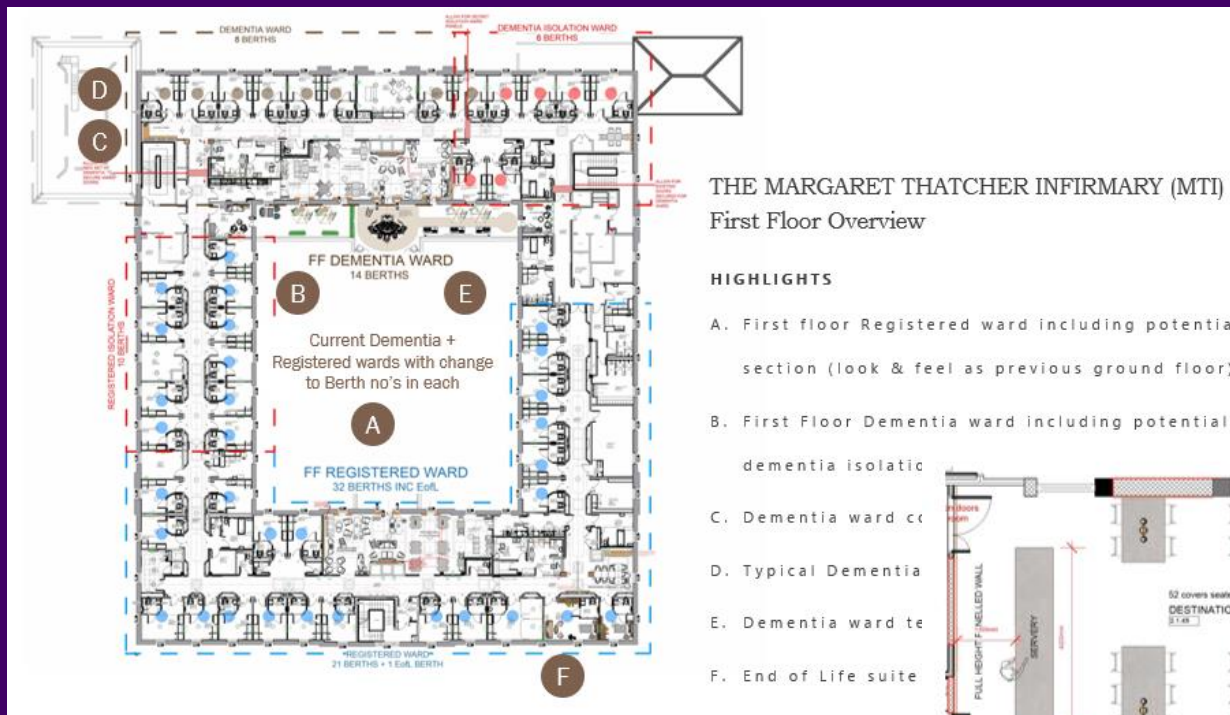


- COLOURS MATERIALS AND HISTORY TO REFLECT FEELING OF UNITY AND SENSE OF BELONGING ACROSS WHOLE RHC SITE





Concept & feasibility



INDICATIVE LAYOUT PLAN AND KEY ELEVATION – not to scale

DESIGN PROPOSALS

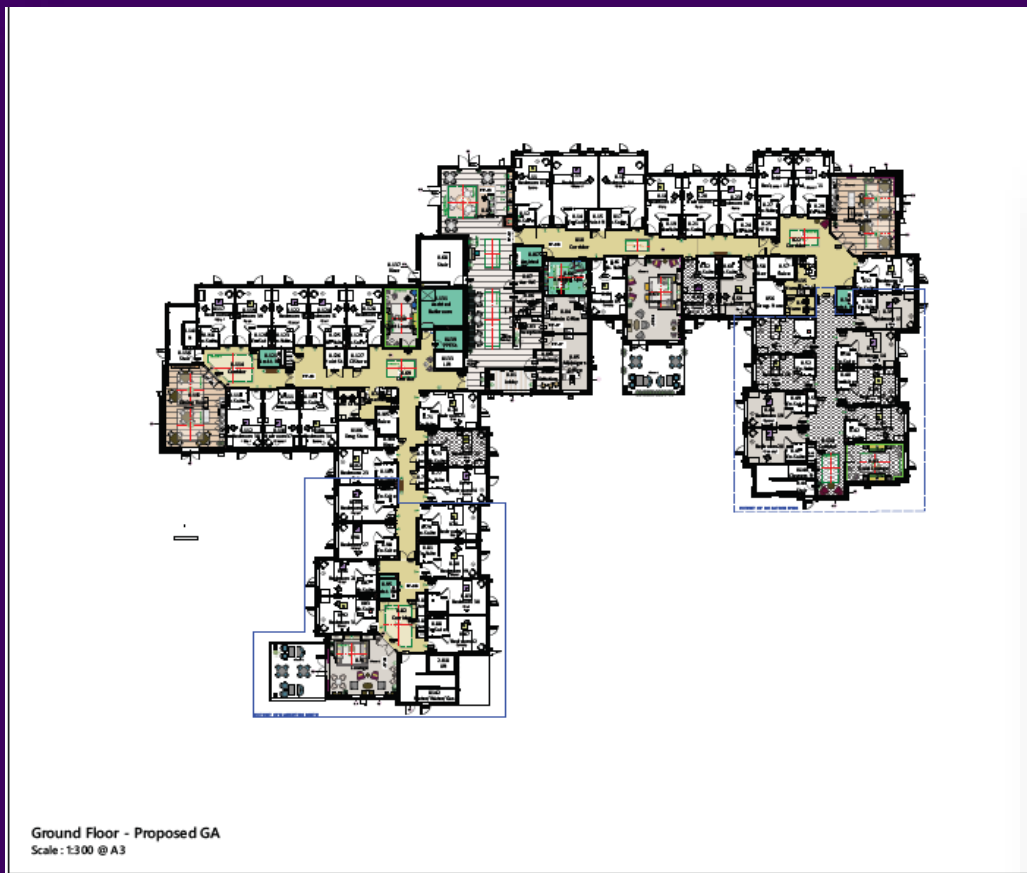
- Communal tables in familiar regimented layout
- Rich colours and fabrics
- Feature drapery with a nod to the military flags in great hall
- Table lamps to communal tables to add atmosphere
- Large historic paintings gives the hall grandeur



INDICATIVE SKETCH OF ENTRANCE AND GRAND FIREPLACE



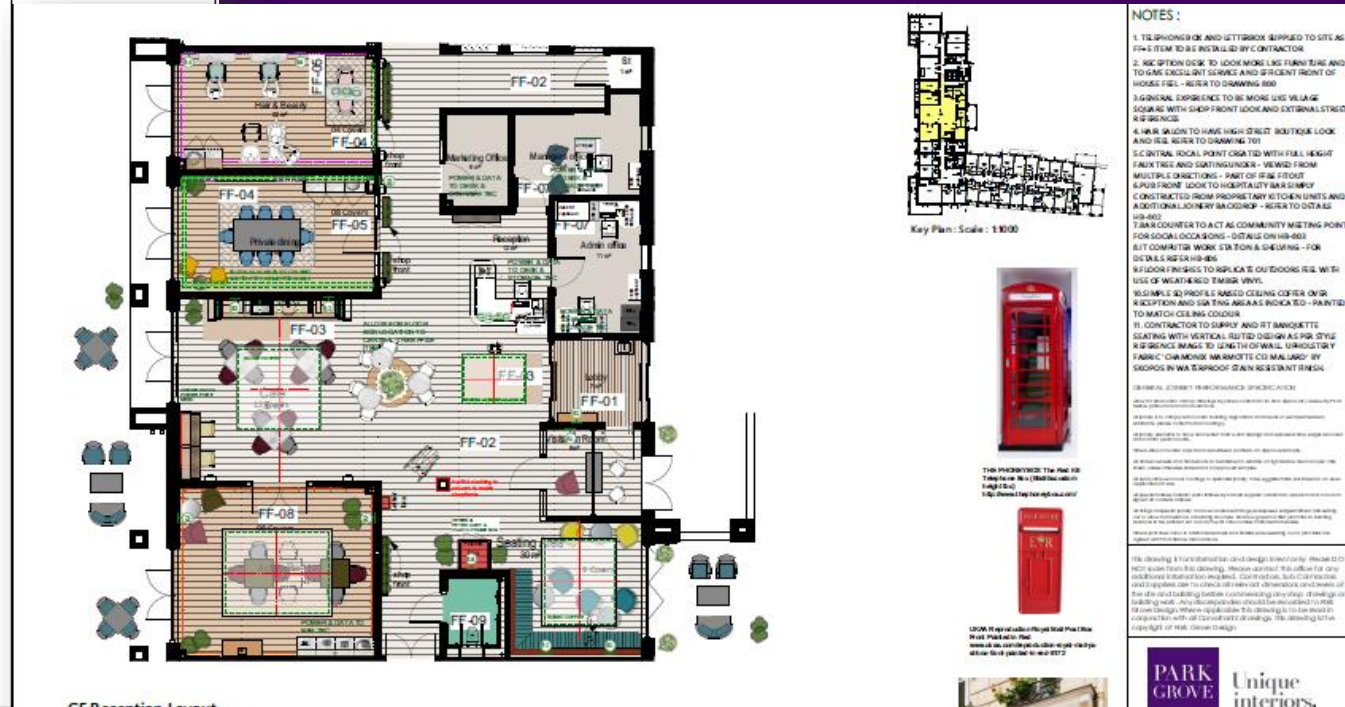
Layout plans



NOTES:

40 ROOMS

140	P	PRINCELY MERCH
140	S	STANDARD MERCH
130	SV	STANDARD MERCH
130	SV	STANDARD MERCH



PARK GROVE - P5292_000

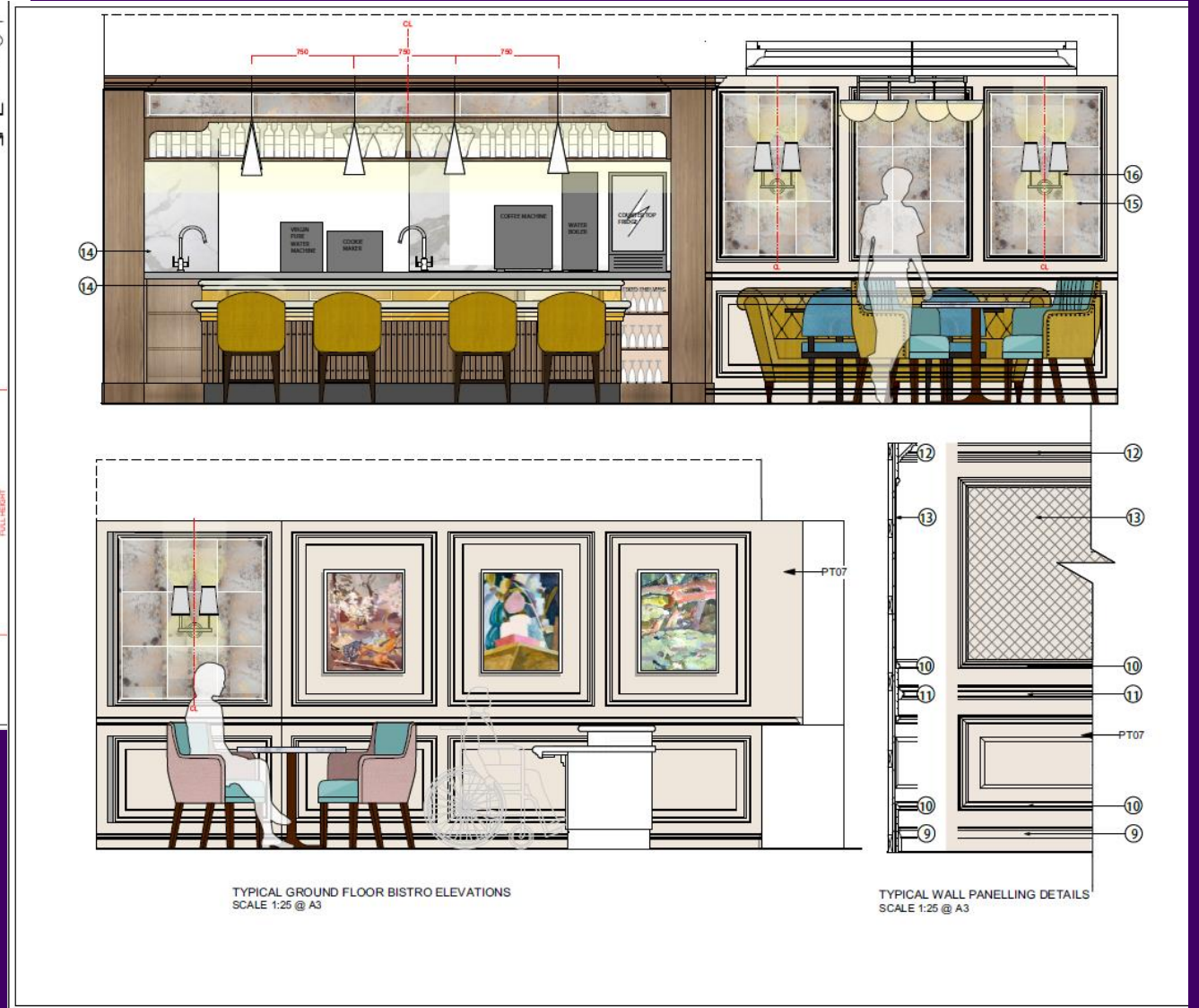
Specification



GENERAL	CEILING EDGE						
	SKIRTING	Edge Skirting board with small 5mm chamfer MDF painted in Dulux 30YY 56/060	70mm H x 18mm D x 4.2m length	primed ready for decorating		€ 8.45	www.skirtingexpress.co.uk/edge
	ARCHITRAVE	Edge architrave hockey stick with small 5mm chamfer MDF painted in Dulux 30YY 56/060	70mm W x 18mm D x 2.4M length	primed ready for decorating		€ 6.65	www.skirtingexpress.co.uk/edge
	DOORS	Painted Dulux 30YY 56/060					Dulux Trade
ENTRANCE & STAIR	FLOOR [ENTRANCE HALLWAY ONLY]	Unnatural Flooring New England Providence NE6007 4m width		Indoor and Outdoor Water resistant Enhanced UV protection Heavy wear rating Bleach cleanable (diluted to 10%) Suitable for underfloor heating		€ 25.95	www.unnaturalflooring.com/products-page/new-england/providence/
	WALLS	Feature corridor wallpaper lobby & stairwell Vescom Spira 2616.04 100% linen paper backed	137cm, sold by linear mt			€ 28.77	Supplied free issue to site, by Park Grove Design, Contractor to confirm qty required
	PANELS	The English Pannelling Co Regency short 800 primed ready for decoration eggshell Dulux Trade, 50YY 63/041 TBC					www.theenglishpanellingcompany.co.uk Dulux Trade
	CEILING	Paint colour, White not Brilliant White					Dulux Trade
	FLOOR	Gerflor Lorenzo 0446 Creation 55	152mm x 314mm, 2.5mm thickness, 0.55mm wear layer, Bevelled edged	PU Coated		€ 18.19	www.gerflor.com
	WALLS	Wallpaper (right hand wall to hall and Lounge niche TV wall) Halequin Momento m.4.111564 Distributor TBC	68.8cm, x 10m roll	Paper backed		€ 33.00	Supplied free issue to site, by Park Grove Design, Contractor to confirm qty required

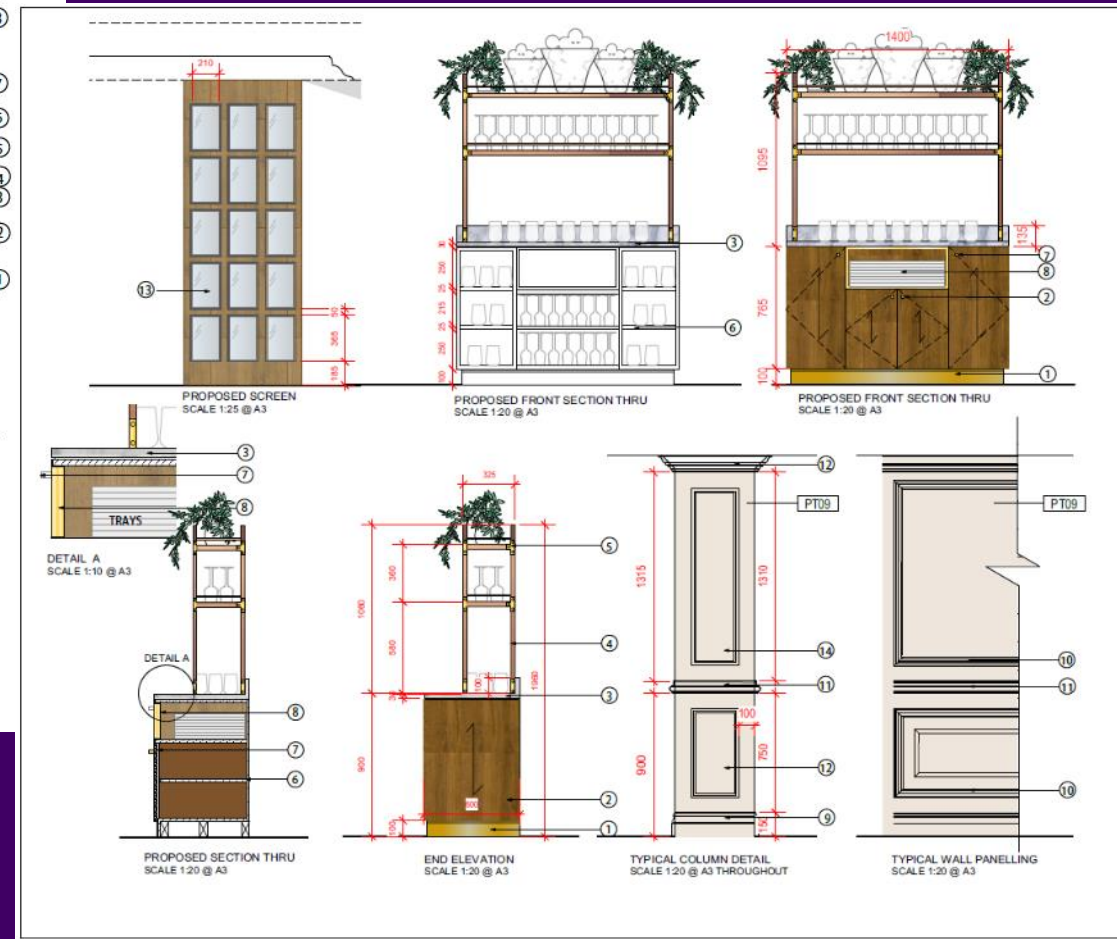
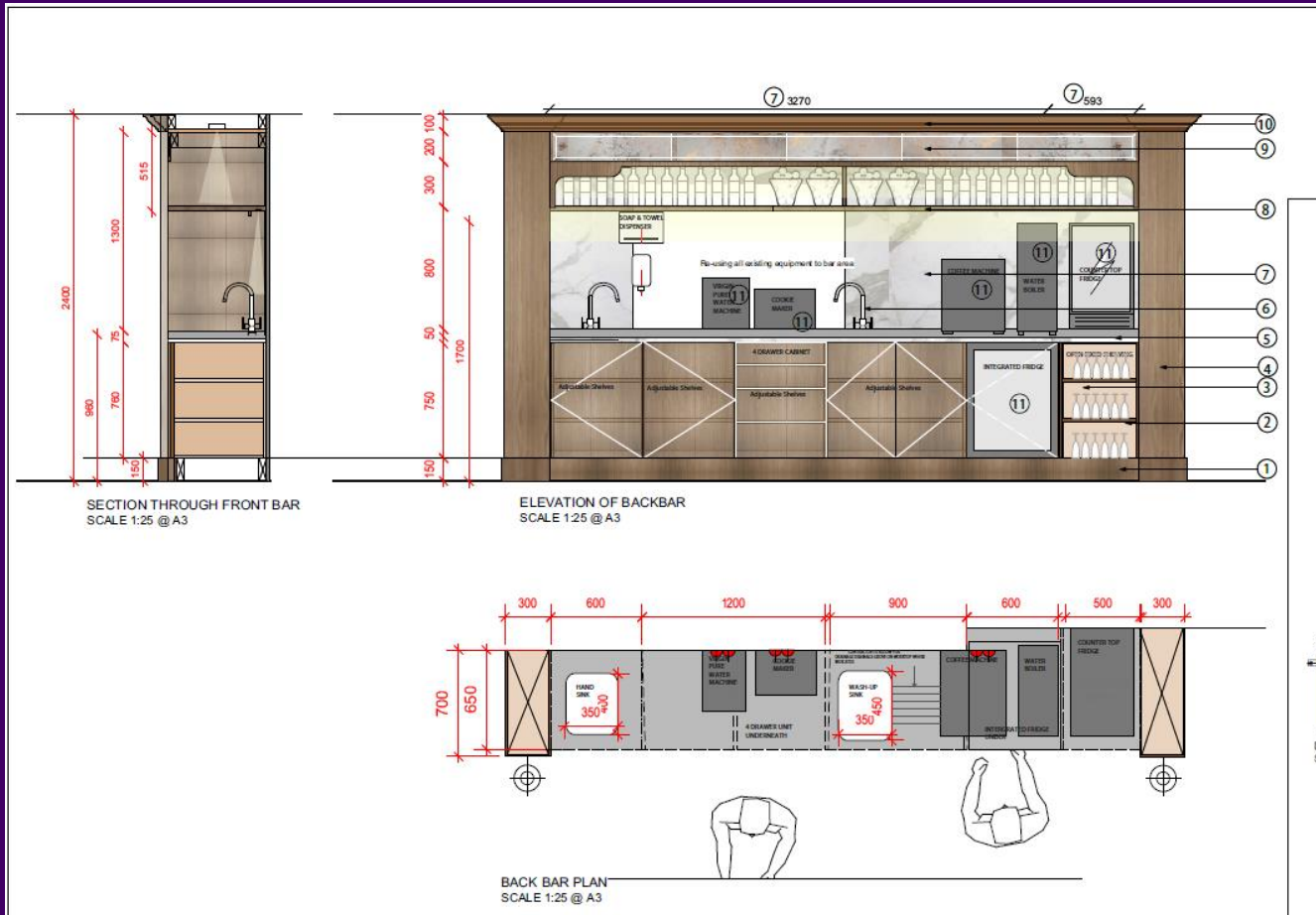
	Qty.	Dimensions	Finish	Lamp Type & Watts (NOTE: client request for warm white LED lamps)	Image	Supplier/Contact
	4	d125cm x h20cm	Anodised metallic /Powder Coated			Martin Huxford
3AM ANTIQUE BRASS WALL LIGHT	4	Full height with shade: 400 mm Projection: 120 mm Width: 330 mm	Antique Brass	E27		Heathfield
	3	Full height with shade: 435 mm Diameter: 460 mm Shade Height: 255 mm		3 x E27 lamp holders		Heathfield
	7	Full height with shade: 420 mm Base Height: 240 mm Base diameter: 80 mm Shade Height: 180 mm	Antique Brass	E27		Heathfield
	7	H 300mm x W 220mm x D 282mm	BRONZE WITH OYSTER SHADE	1 x 60w E27		Looking for lighting (Astro)
Residents Lounge						
C9	Ceiling	Ceiling light 'GLASGOW'	PENNY BRONZE	E27		Chelsom

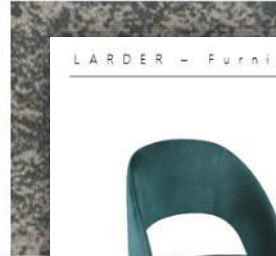
Tender & construction packages










Design detailing





LARDER - Furniture



BAR/CAFE AREA						
Armchair, 'Shaw AC366'	4	H:1720mm D:440mm W:740mm D:200mm	COM 4 mos require	£ 588.00	£ 2,352.00	
Fabric to above 'Myriad 116 Navy'	16	140cm wide	45,000 marringle, Stein Resistant Finish, Crib 5	£ 11.94	£ 191.04	
Coffee/Side Table	2			£ 300.00	£ 600.00	
Dining Chair 'Hummer'	13	H: 850mm SW: 460mm W: 610mm D: 720mm	Front seat and back: 1.75m Outside back: 1.25m	£ 421.00	£ 5,486.00	
Fabric to above, 'Marmote C4 Chairhouse'	12	137cm	Water proof, Colour Fastness to light 5, Crib 5	£ 17.55	£ 210.60	
Fabric to above back only, '1926/03 Marlow Bilberry'	11.25	135cm wide repeat-V: 23cm Hx11.5cm	15,000 rubric	£ 28.50	£ 320.63	
FR Treatment for above to Crib 5 & Stain & Soil Repellent	11.25			£ 6.90	£ 77.63	

INDICATIVE IMAGES TO SHOW POSSIBLE SCHEMES



Sketch Visuals & CGIs



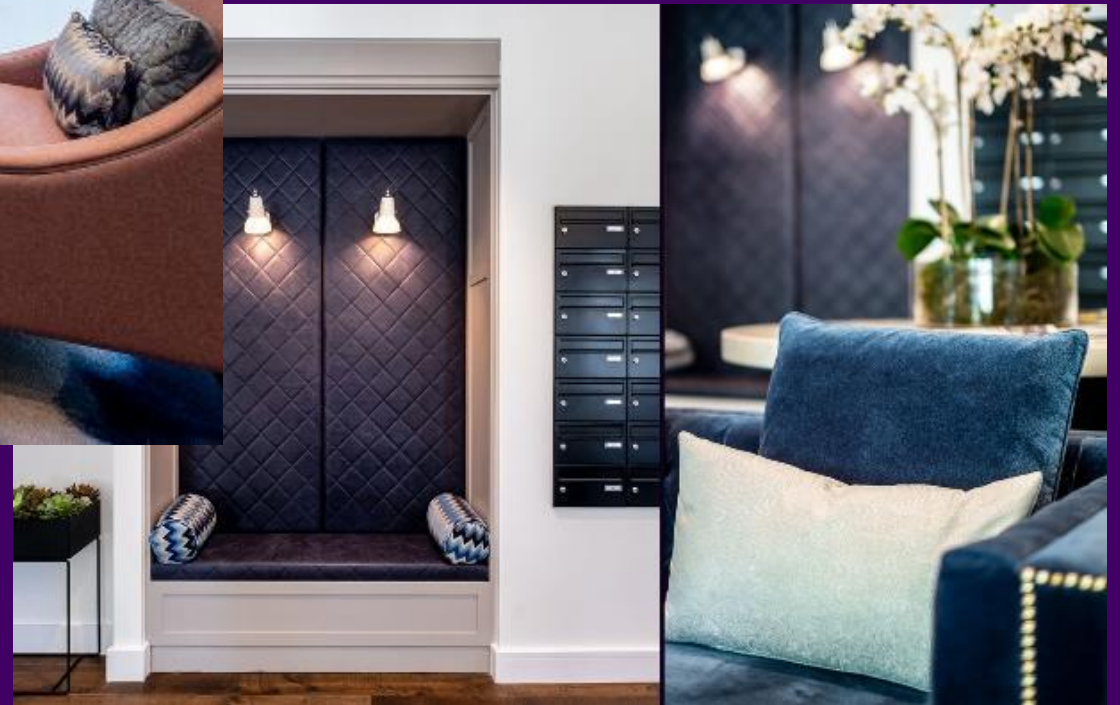


Site supervision





Fitout & handover



16

Our Projects



“GREAT INTERIOR DESIGN HAS THE ABILITY TO ENHANCE THE QUALITY OF PEOPLE’S LIVES”



18

Interior design of the Hamberley Care new build and refurbishment portfolio across the UK. Developing an interior brand for the group which reflects their luxury values. Services include tender design and construction detailing, through to procurement and turn-key fit-out.



HAMBERLEY DEVELOPMENT, WEST BYFLEET



HAMBERLEY DEVELOPMENT

Interior design of the Hamberley Care new build portfolio across the UK. Developing an interior brand for the group which reflects their luxury values, creating uplifting spaces for residents, visitors and staff alike. Services include tender design and construction detailing, through to turn-key fit-out.





INSPIRE NEUROCARE

20

Neurological rehabilitation and specialist care centre in Worcester. A contemporary new build that delivers spaces that support the unique needs of the resident through use of innovative technologies, bespoke joinery design and carefully selected finishes and FF&E.





INSPIRE NEUROCARE

Warm and homely bedrooms with contemporary colour scheme, uplifting lighting and beautiful yet functional furnishings.





Website

www.parkgrove.co.uk

Email

lori@parkgrove.co.uk

Contact number

+44 (0)1273 600890



Work
with us