



Approaching the end of life
in extra care housing:
innovating and learning together

Sharing wider practice



Gina King
Independent Consultant and Trainer

Six ambitions to bring that vision about

- 01 Each person is seen as an individual
- 02 Each person gets fair access to care
- 03 Maximising comfort and wellbeing
- 04 Care is coordinated
- 05 All staff are prepared to care
- 06 Each community is prepared to help

"I can make the last stage of my life as good as possible because everyone works together confidently, honestly and consistently to help me and the people who are important to me, including my carer(s)."



How “Better Lives, Better Endings” supports the Ambitions foundations



Foundations for the ambitions

- Personalised care planning
- Shared records
- Evidence and information
- Those important to the dying person
- Education and training
- 24/7 access
- Co-design
- Leadership

Mapping care certificate standards

- 1 – Understand your role
- 2 – Your personal development
- 3 – Duty of Care
- 4 – Equality and diversity
- 5 – Work in a person-centred way
- 6 – Communication
- 7 – Privacy and dignity
- 8 – Fluids and nutrition
- 9 - Awareness of mental health, dementia and learning disabilities
- 10 -Safeguarding adults
- 12 – Basic life support
- 13 – Health and safety
- 14 – Handling information



Each person is seen as an individual

Personalised care planning

- Personalised care guidance in PEOC context – principles
- Universal Principles for Advance Care Planning
- Online support tool is now available on a public-facing website, 'Planning Ahead',
- Advance Care Plan for England and Wales
- DNACPR decisions during Covid-19 - article reports on a study on use of DNACPRs carried out across 23 Trusts
- ReSPECT

ReSPECT

Recommended Summary Plan for
Emergency Care and Treatment



Each person is seen as an individual Personalised care planning



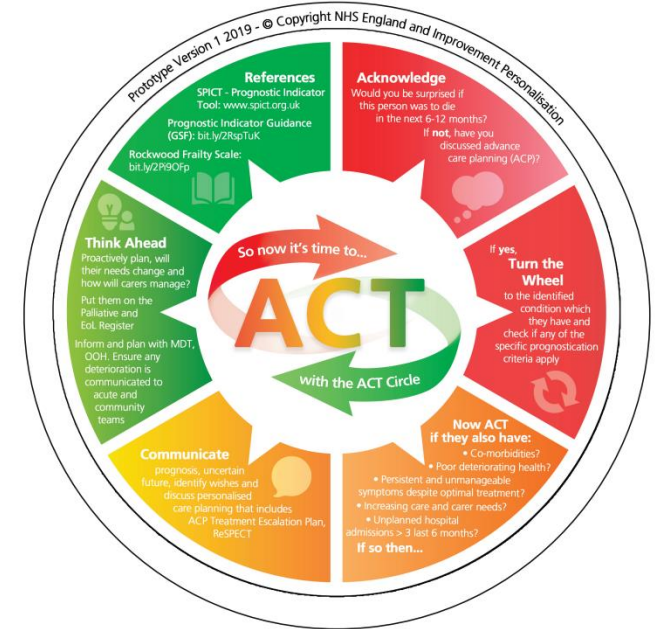
No Barriers Here

For people excluded by identity, culture, ethnicity or race

NHS CHARITIES TOGETHER



NHS
The Dudley Group
NHS Foundation Trust



NHS
Midlands and Lancashire
Commissioning Support Unit

NHS
Greater Manchester & Eastern Cheshire
Strategic Clinical Networks

NHS
North West Coast
Clinical Networks

North West EOLC – EARLY Identification and Personalised Care Planning



Care is coordinated

Shared records

- EPaCCs: research led by colleagues in Cambridge University looks at the drivers and challenges in patient data sharing – re-print



- 24/7 Single point of access - grants
- New target date for the implementation of statutory arrangements for Integrated Care Systems on 1 July 2022 and the establishment of Integrated Care Boards (ICB),



All staff are prepared to care

Education and training

- National focus on training
- Workforce:
 - Scoping
 - Benchmarking
 - Modelling



Introducing the Lantern Model: a contemporary model of nursing for people at the end of life

Heather Richardson and Marie Cooper



Palliative and End of Life Care Information Sessions

These sessions take place monthly, and are open to clinicians, commissioners, managers and leaders working across palliative and end of life care, in all settings.

To contribute a session topic or to request a speaking slot, please email england.palliativeandendoflife@nhs.net

Sessions



Florence
Nightingale
Foundation

StChristopher's
More than just a hospice



e-ELCA
End-of-life care for all

eLearning to enhance education and training for end-of-life care



Each community is prepared to help Those important to the dying person

- Work with Social Prescribing and Compassionate Communities:
 - New [Boots palliative care service](#) makes vital medicines & end of life support more accessible to patients/family
- Bereavement

Dying Matters
Leicester, Leicestershire & Rutland

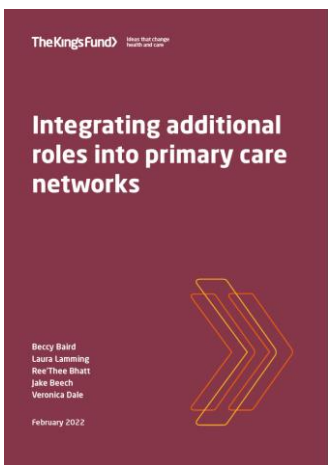
Dying Matters Awareness Week

From 2 - 6 May 2022, communities across the country will come together to talk about death, dying and bereavement.

THE BEREAVEMENT HELP POINT



Compassionate Communities UK



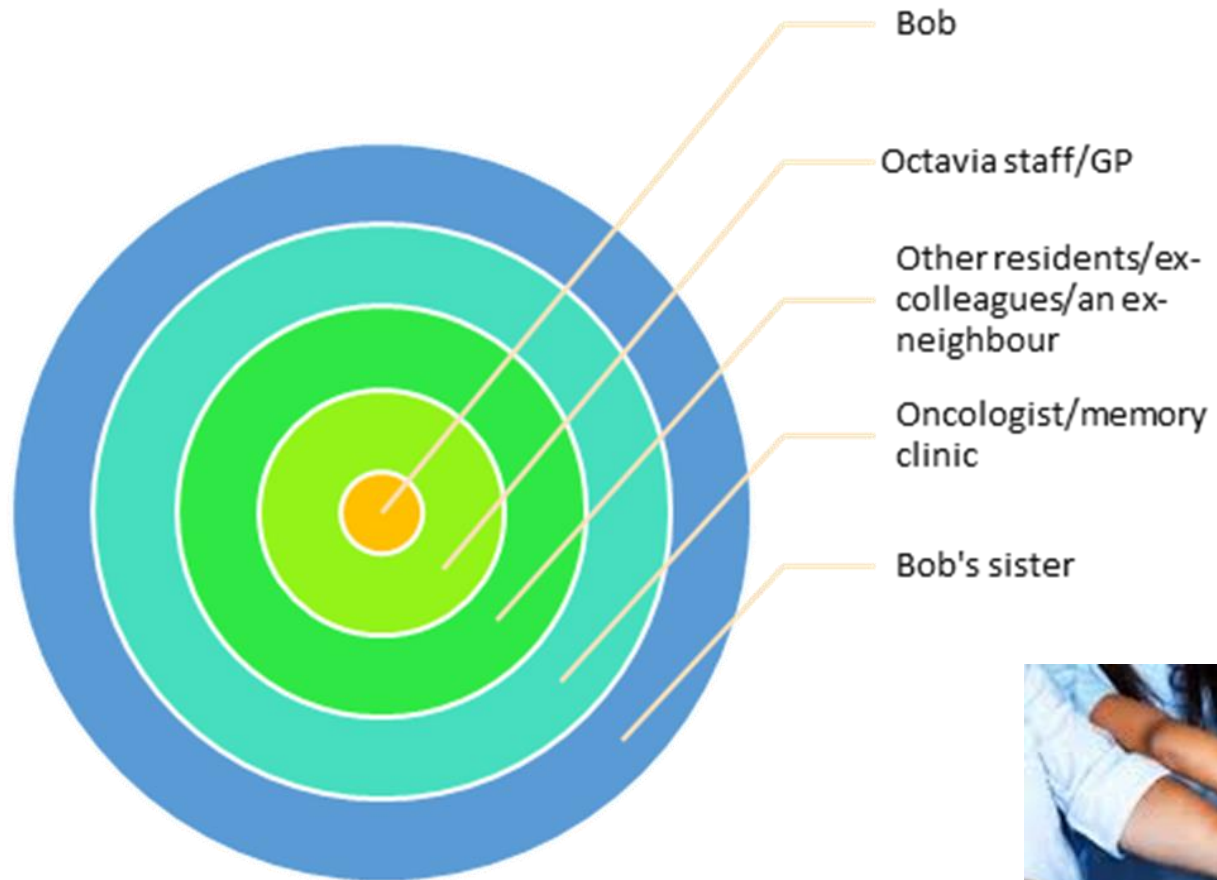
Somerset

End of Life Care and Bereavement Support

QUALITY | DIGNITY | COLLABORATION



Better lives, Better endings resource



HAPPY
HOUR



Compassionate
Communities UK



Further information

- Email england.palliativeandendoflife@nhs to request an invite/information
- Palliative and End of Life Care Information Sessions (england.nhs.uk)
- <https://www.england.nhs.uk/publication/ambitions-for-palliative-and-end-of-life-care-a-national-framework-for-local-action-2021-2026/>
- <https://www.england.nhs.uk/north-west/north-west-coast-strategic-clinical-networks/our-networks/palliative-and-end-of-life-care/for-professionals/early-toolkit-for-primary-care/>
- Integrating additional roles into primary care networks | The King's Fund (kingsfund.org.uk)
- <https://www.stchristophers.org.uk/course/lantern-model-webinar-series/>
- Somerset End Of Life (eolcare.uk)
- dyingmattersleicestershireandrutland.com
- Compassionate Communities UK (compassionate-communitiesuk.co.uk)



Thank-you for listening



gina.kingconsultancy@gmail.com



Ginaking_



Ginakingconsultancy

Website: Ginaking.co.uk

