



## Off the drawing board: Designing sustainable multigenerational neighbourhoods

Manisha Patel, Senior Partner - PRP

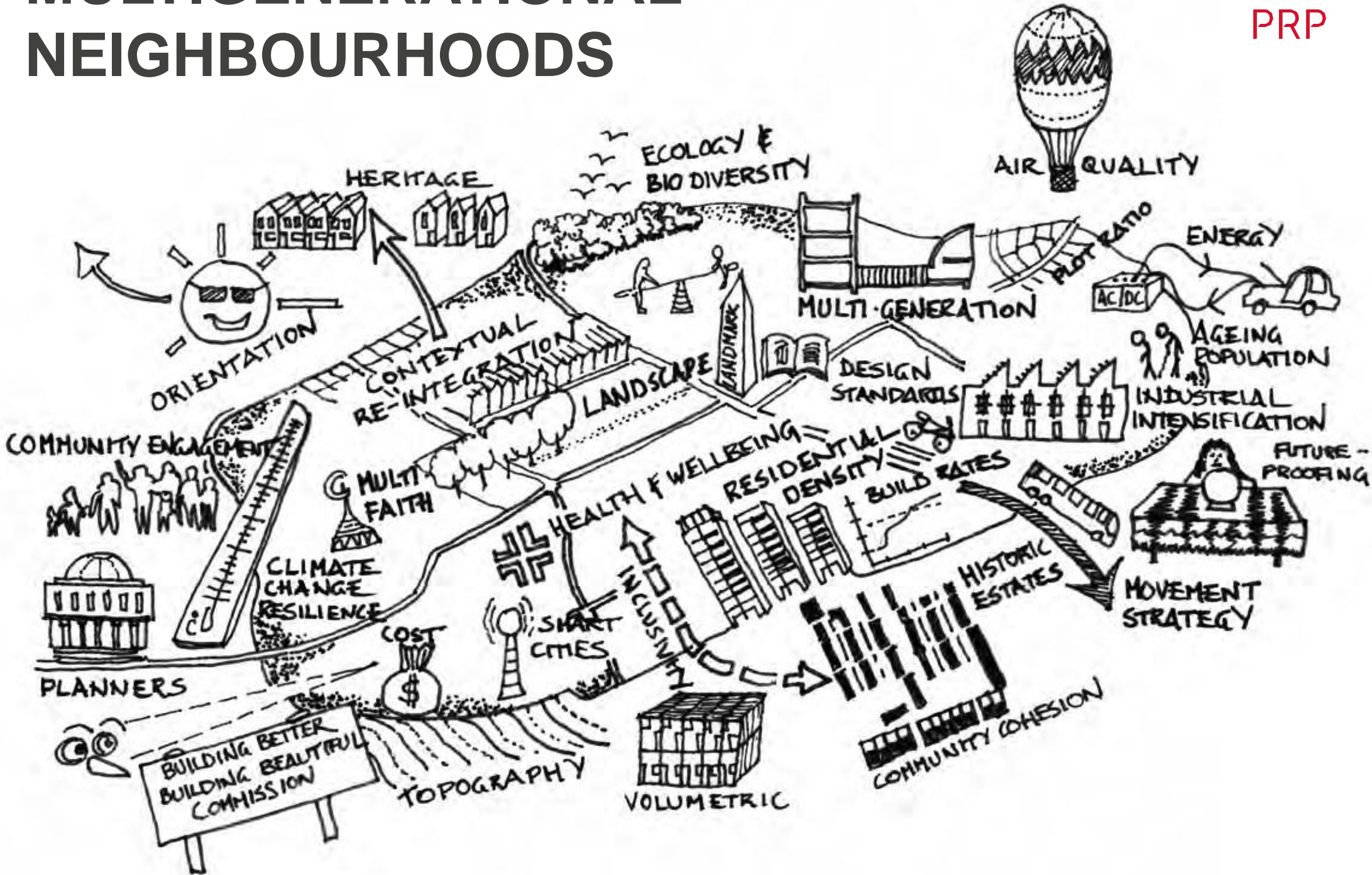
Jenny Buterchi, Partner - PRP

Paul Quinn, Director of Regeneration - Clarion



# MULTIGENERATIONAL NEIGHBOURHOODS

PRP

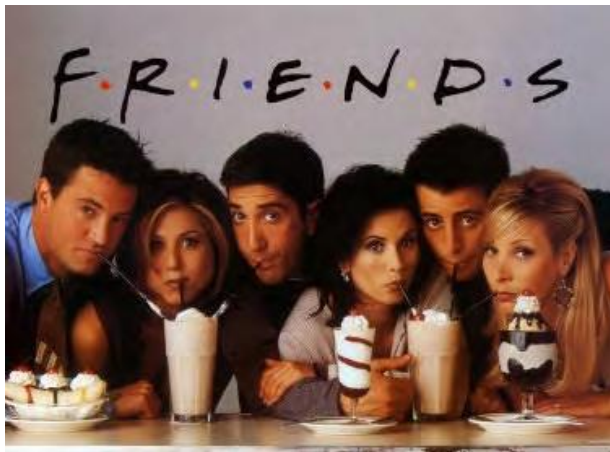


# What housing means to different people

## PRP

### Priorities for young people?

- Proximity to places to go out and enjoy?
- Proximity to friends?
- Proximity to work?
- Affordability?



# What housing means to different people

## PRP

### Priorities for families?

- Proximity to childcare?
- Proximity to family?
- Proximity to good schools?
- Proximity to work?
- Affordability



# What housing means to different people

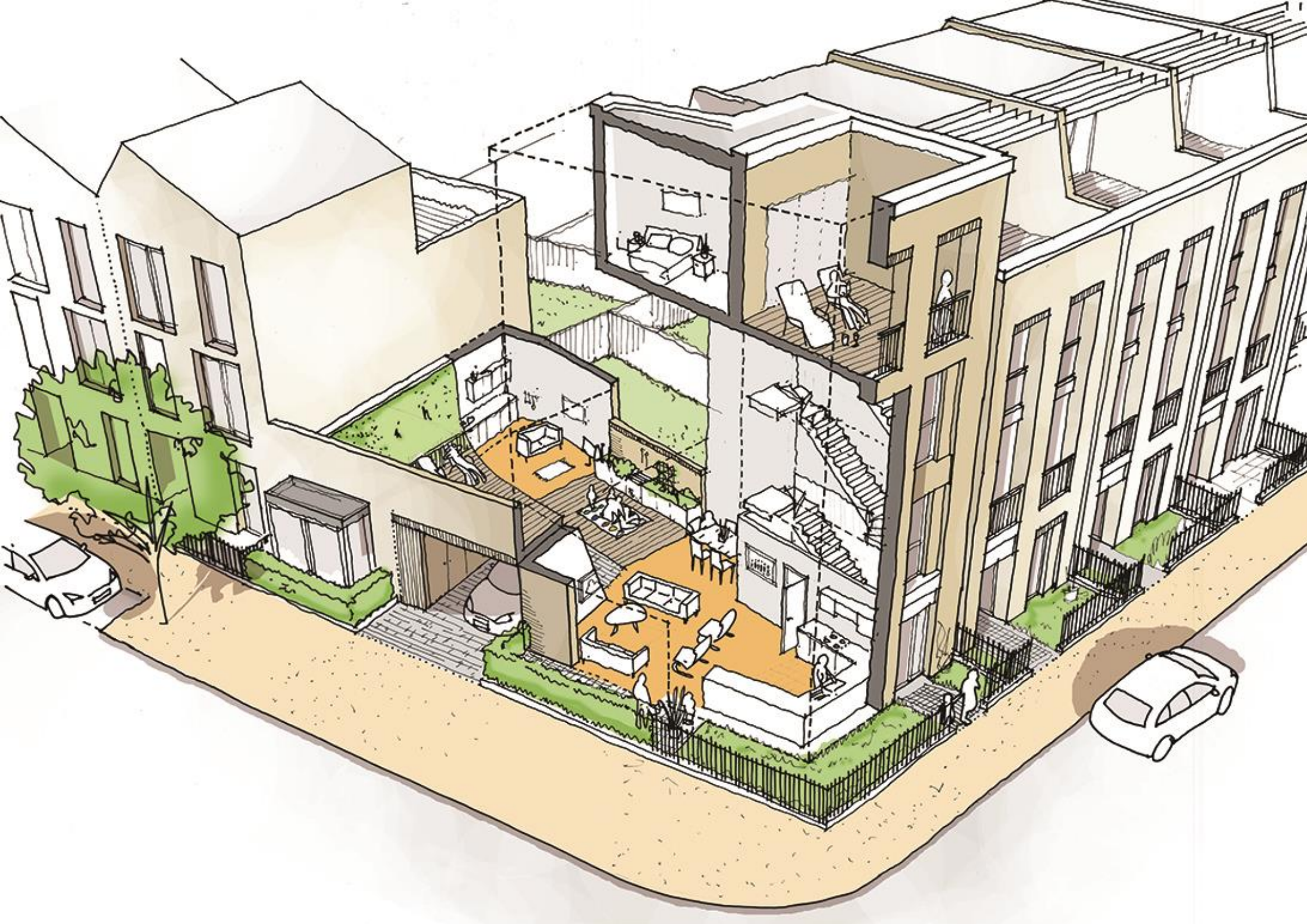
## PRP

### Priorities for elderly people?

- Do they want somewhere quiet?
- Proximity to family?
- Proximity to shops and facilities?
- Affordability











**There is no  
market**

**It cost to  
much**

**What tenure  
Private v  
Affordable**

**Cost  
Verses  
Developer  
Benefits**







**Independence  
with  
support**



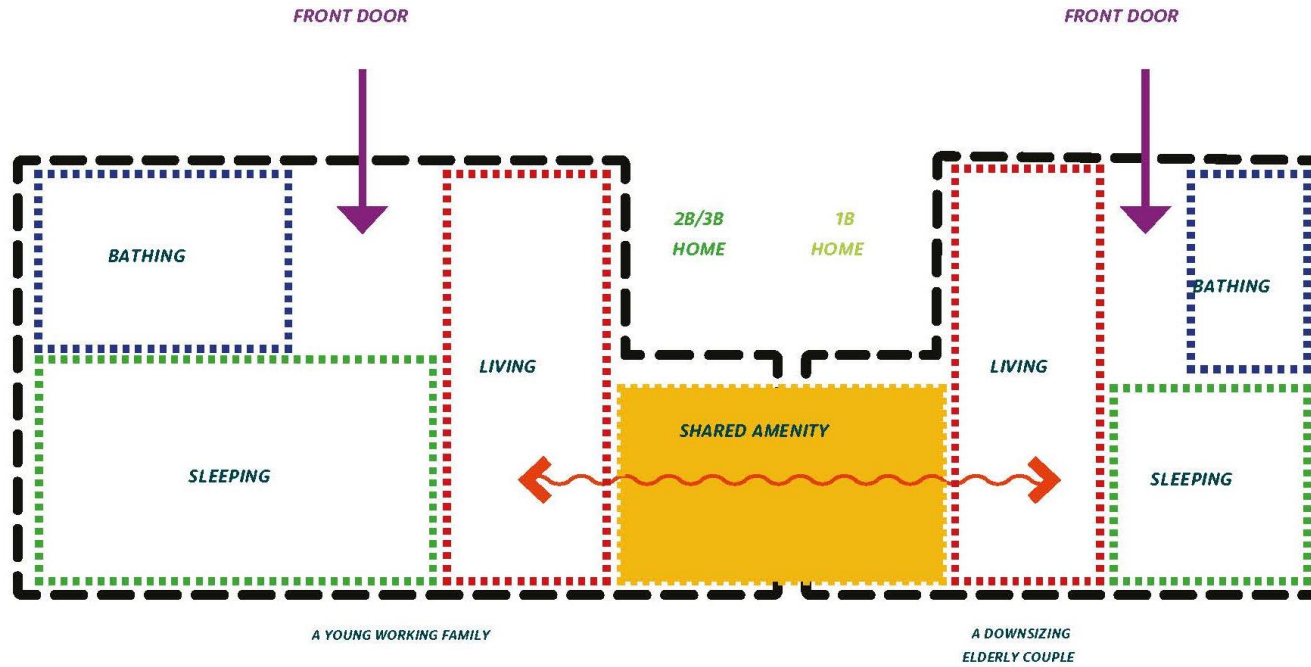




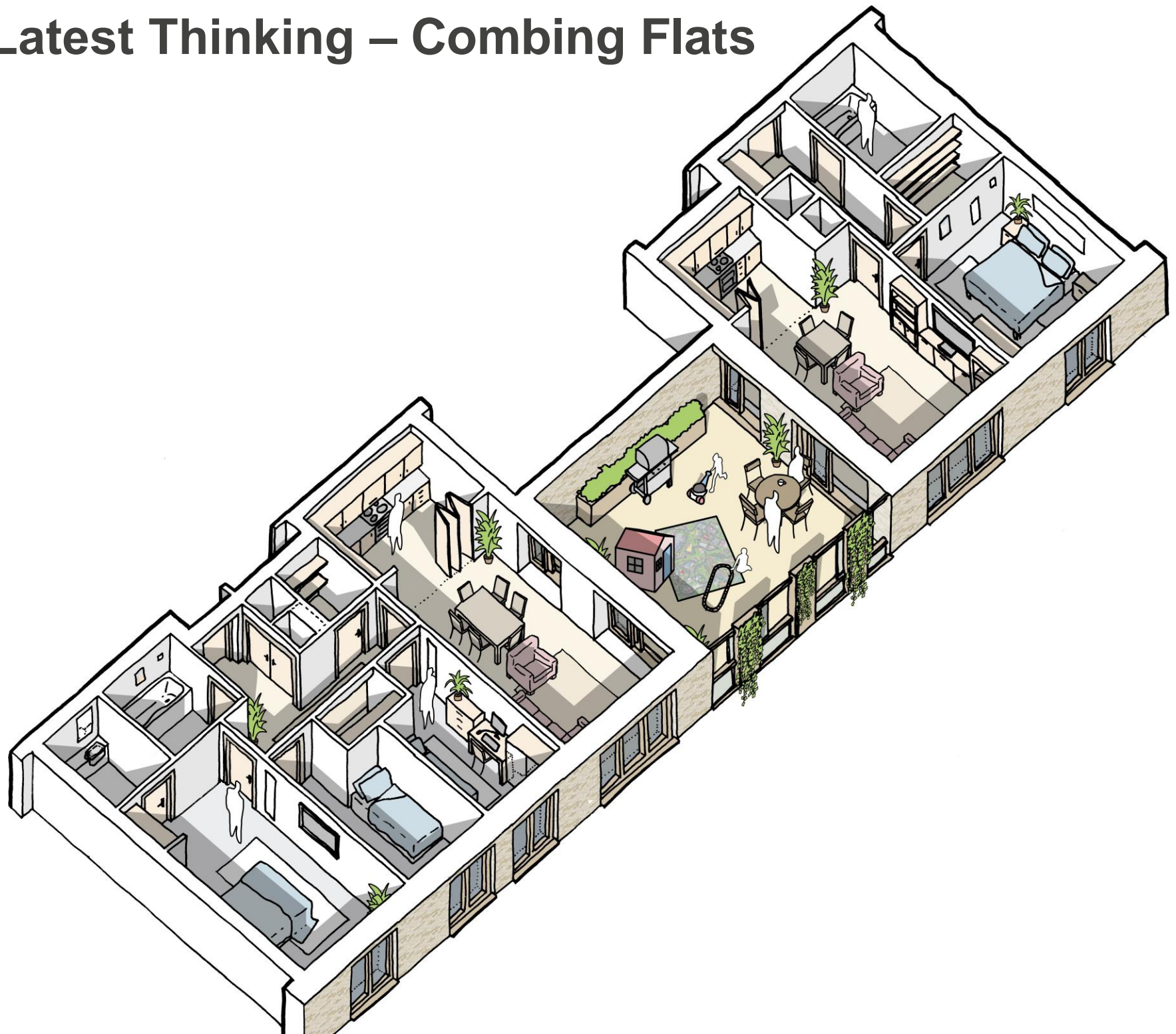


**Independence  
with  
support**

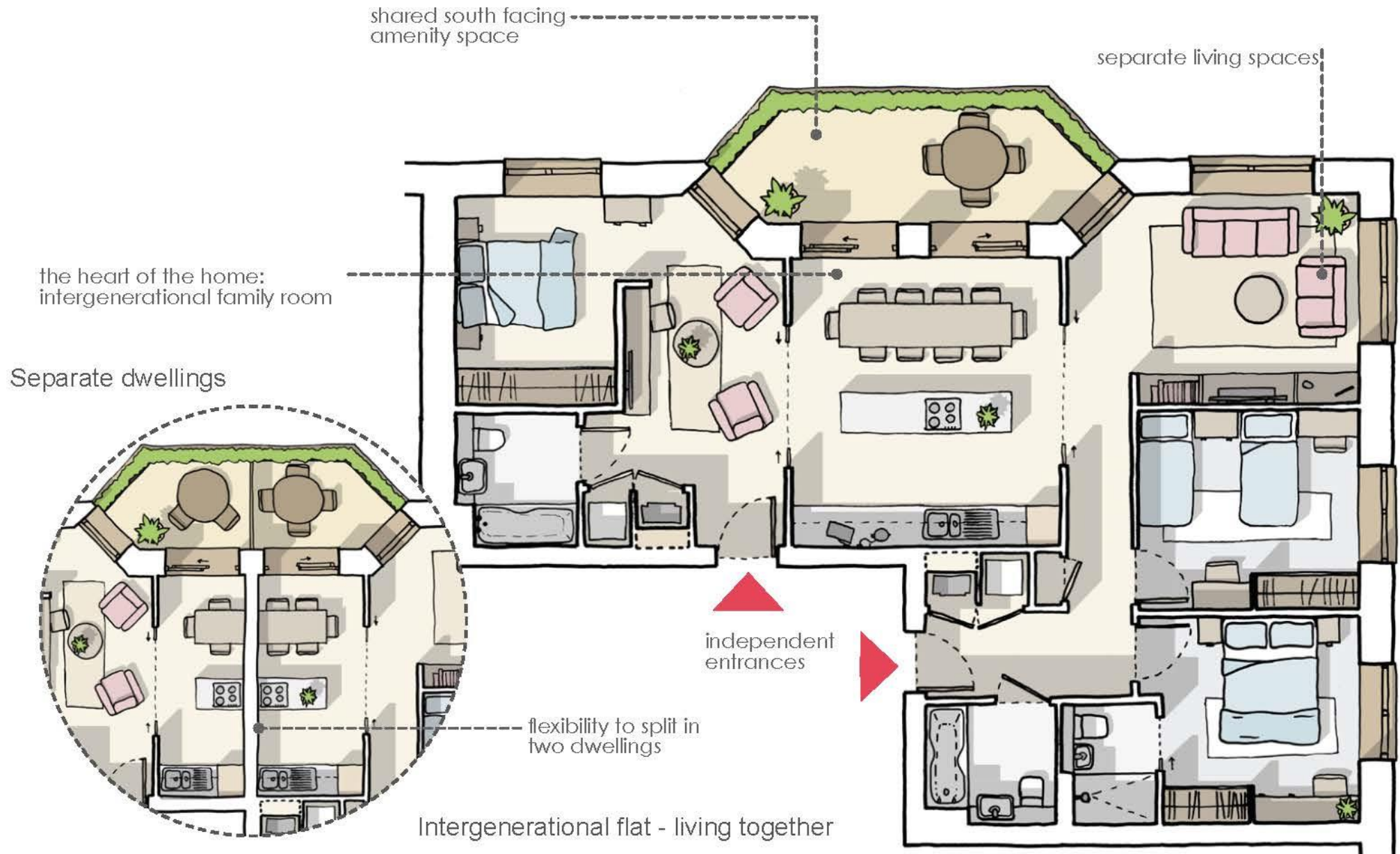
# PRP'S Latest Thinking – Combing Flats



# PRP'S Latest Thinking – Combing Flats



# PRP'S Latest Thinking – Multigenerational Flats



# PRP'S Latest Thinking – Multigenerational Flats



Shared kitchen-dining space



Intergenerational living



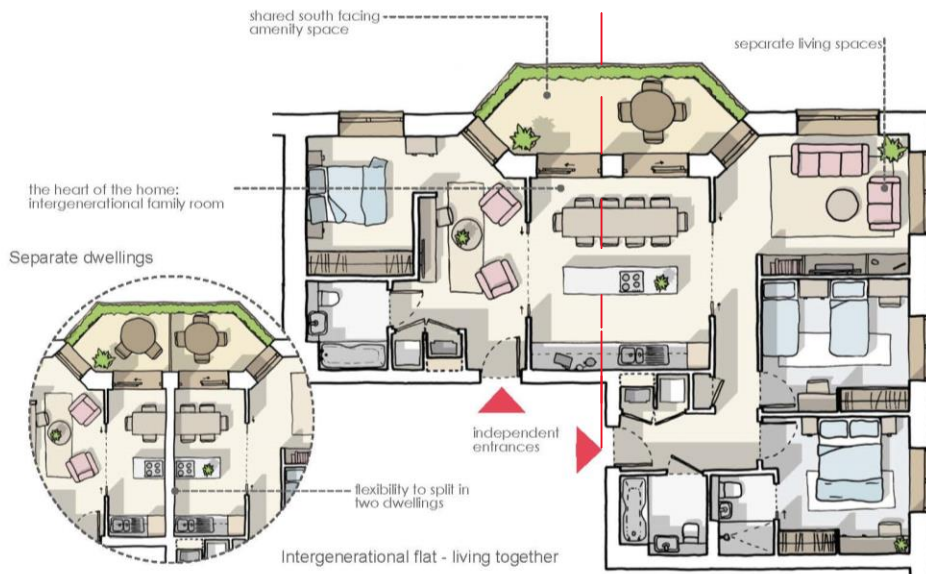
Intergenerational apartment

studio apartment

two bedroom apartment



Large outdoor terraces



shared south facing amenity space

separate living spaces

the heart of the home: intergenerational family room

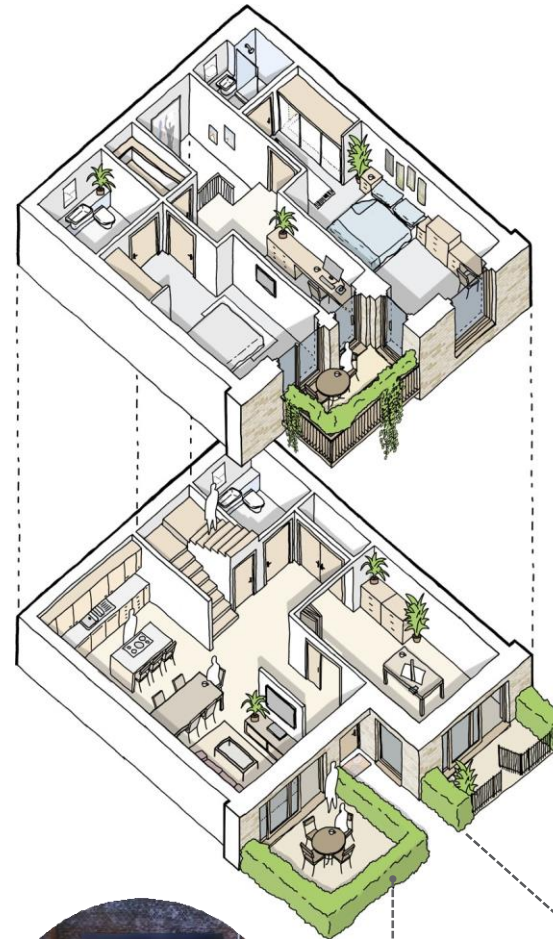
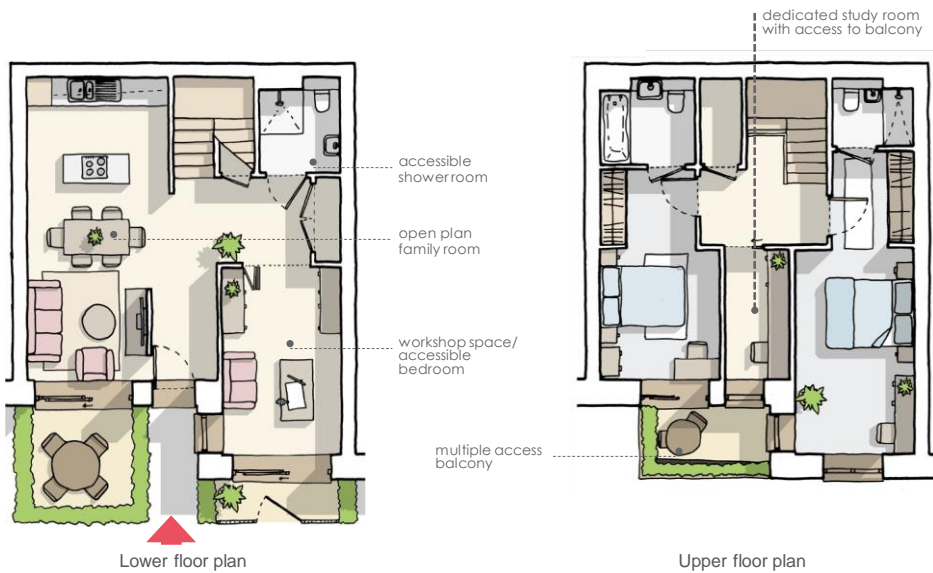
Separate dwellings

independent entrances

flexibility to spill in two dwellings

Intergenerational flat - living together

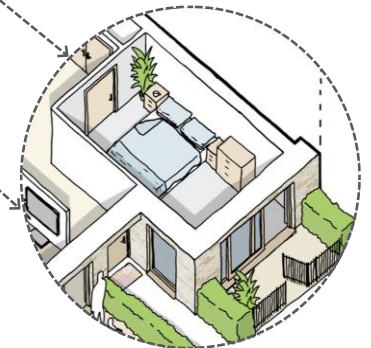
# PRP'S LATEST THINKING | RECENT DESIGN COMPETITIONS



Spill-out workshops



Living spaces that extend onto the garden



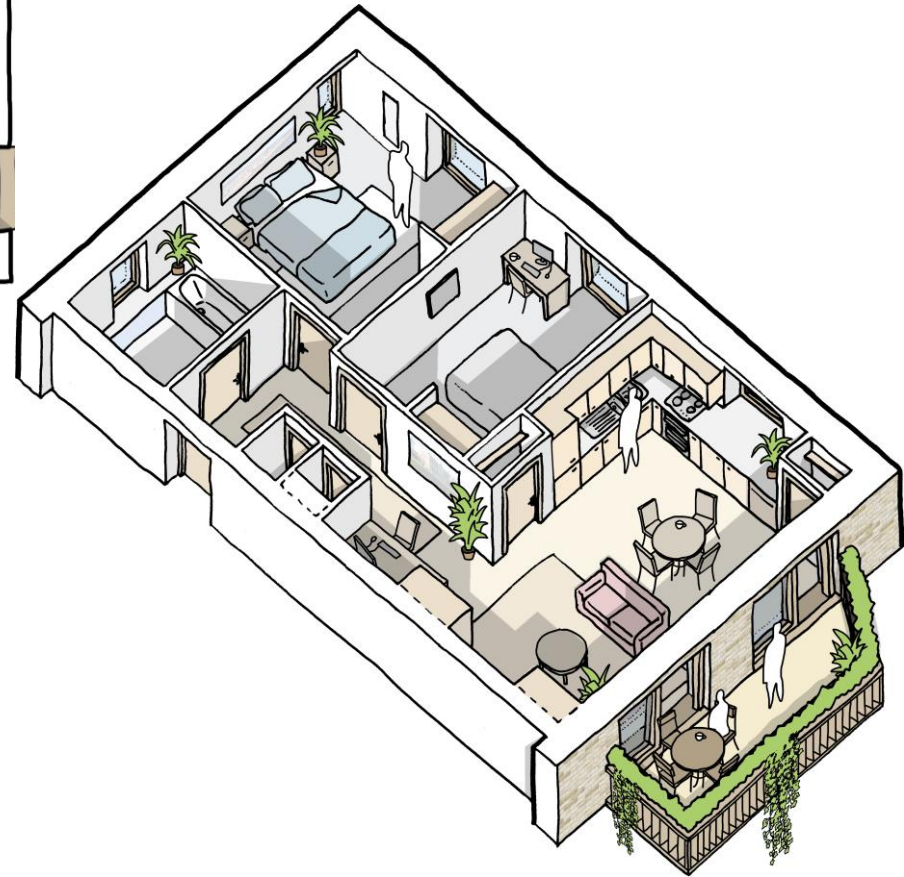
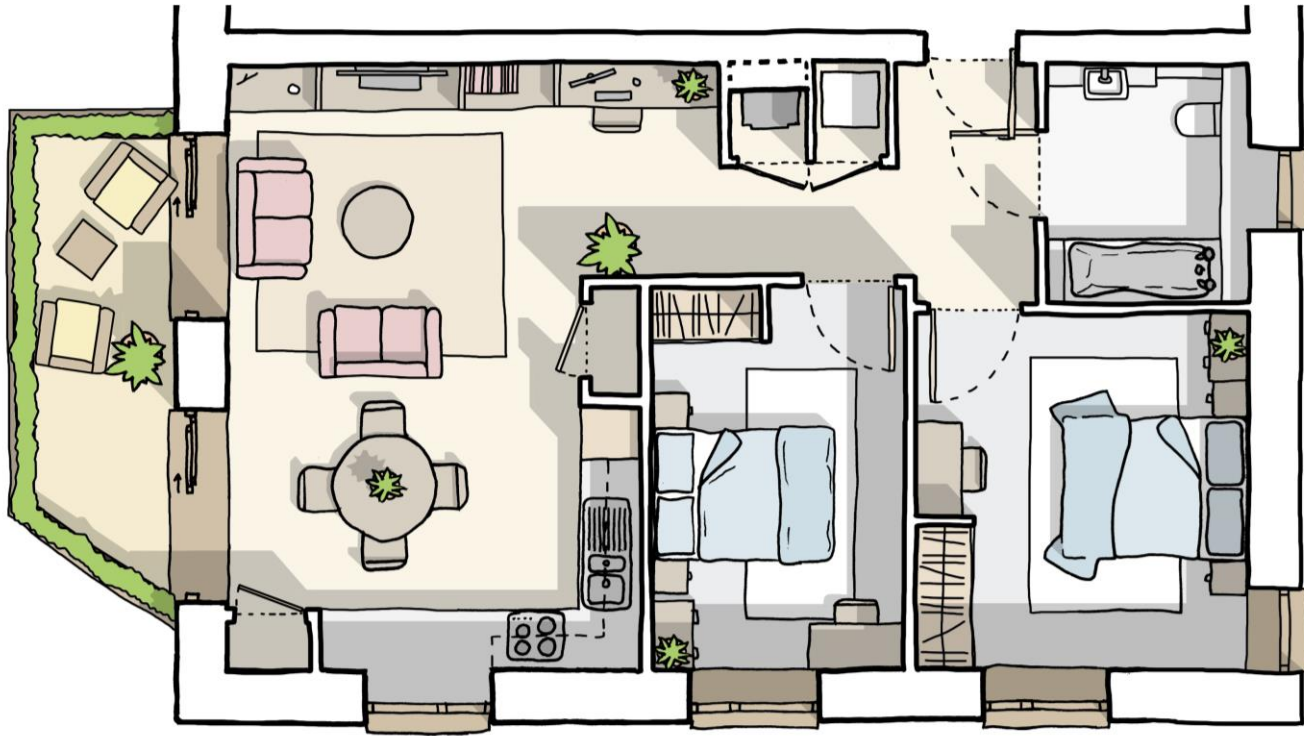
Plug-in ground floor accessible bedroom



Generous front gardens and upper level balconies

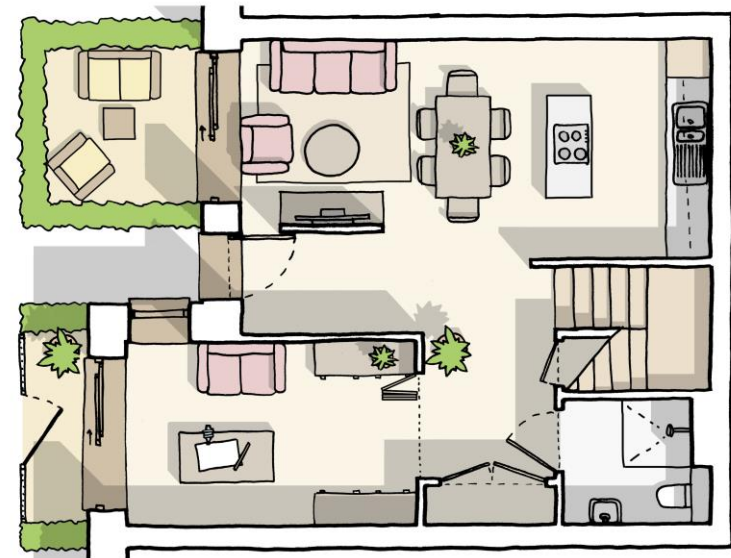
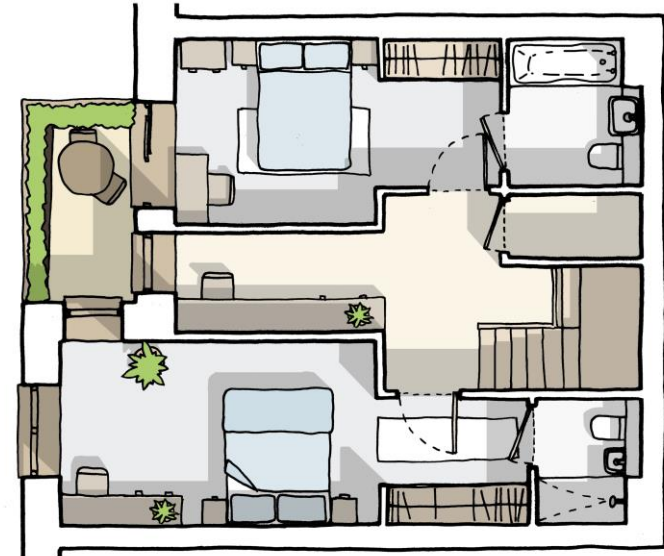
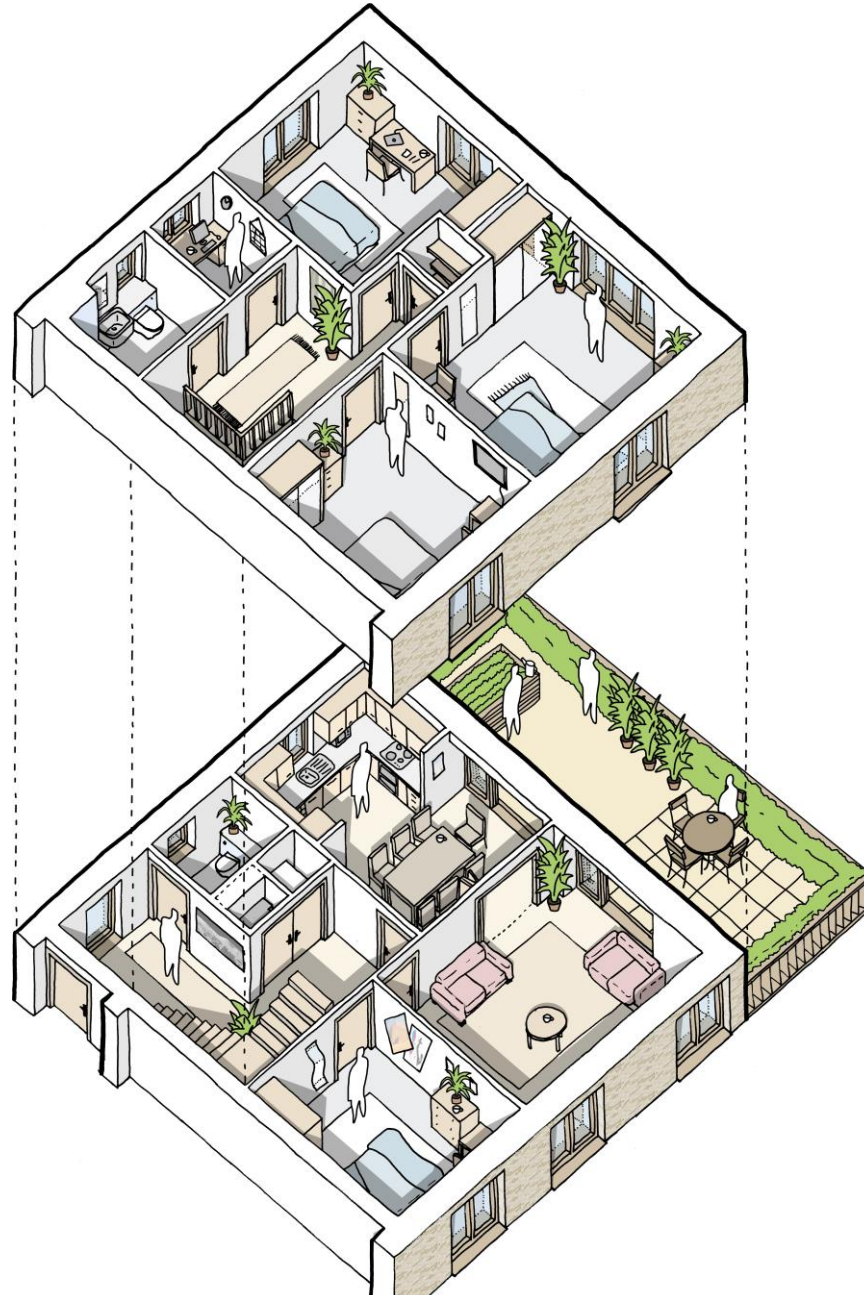
ground floor garden/  
living room spill-outspace

# Inclusive Typology – combining standards



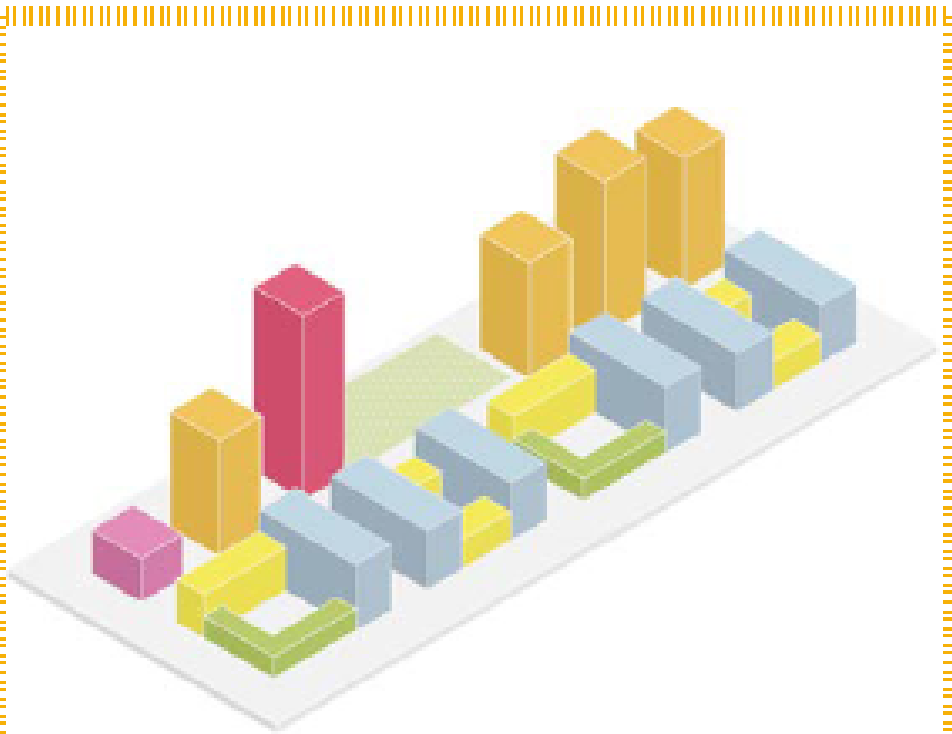


# Live Work Home



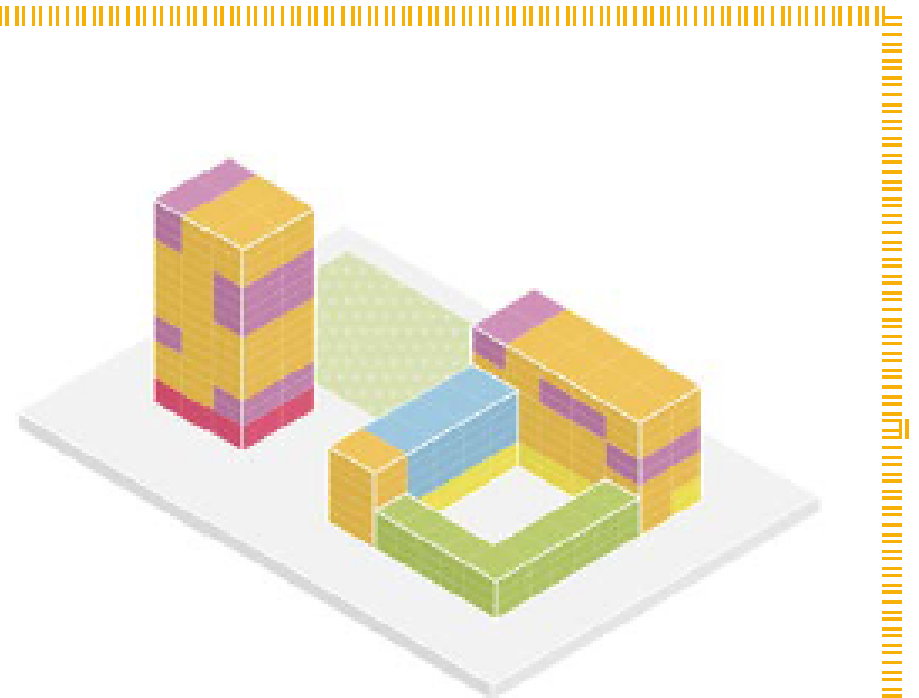
## INTERGENERATIONAL MASTERPLAN

Fully integrated communities



## INTERGENERATIONAL BUILDINGS

Homes for all including multigenerational

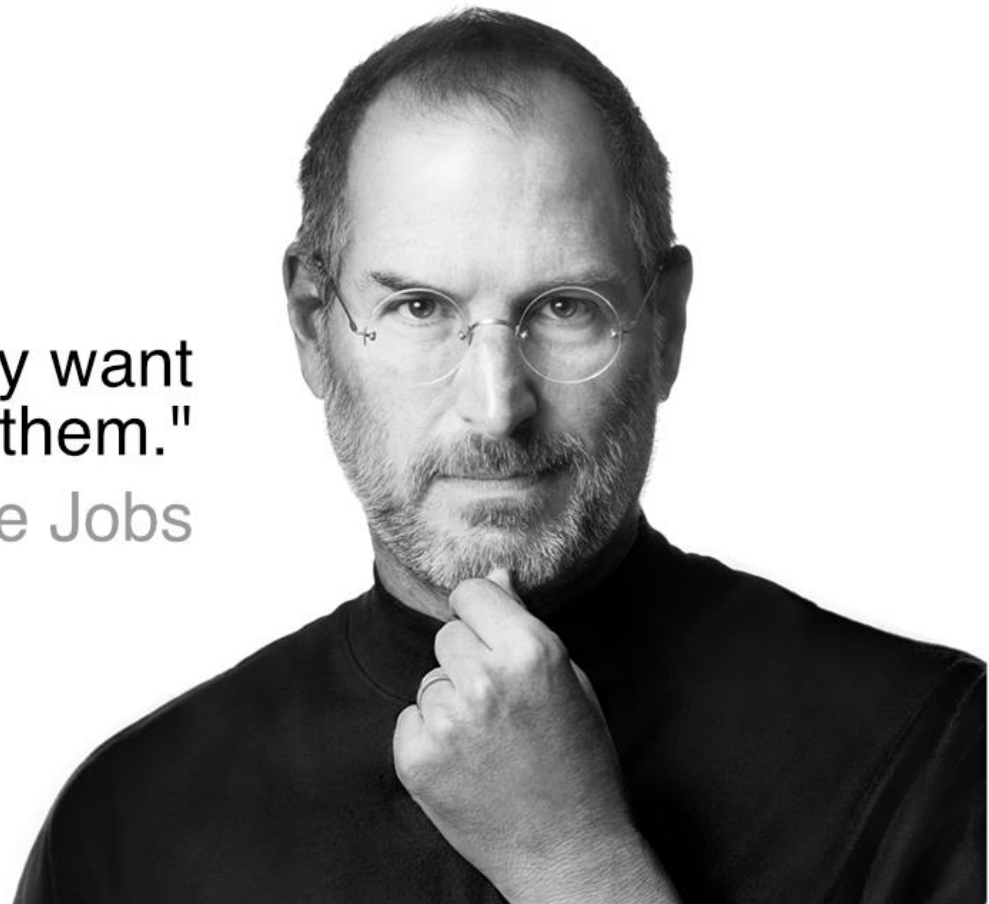


# CREATE THE MARKET FOR THE CONCEPT

PRP

"People don't know what they want  
until you show it to them."

- Steve Jobs



# New Approaches to Later Living

West Byfleet



New Lodge, New Earswick



Manor Gardens, Gloucester



Freemans Quay, Wichelstowe



Limelight, Old Trafford



Bayton Court, London



# Oakfield, Swindon

Winner: Building For  
A Healthy Life 2021

**HOUSINGDESIGNAWARDS**

**A new neighbourhood with community  
at its roots**



# Connecting the Community



# Connecting Communities

PRP



Masterplan by Metropolitan Workshop  
Landscape by LUC



# Connecting the Community





# Creating Communities within the New community



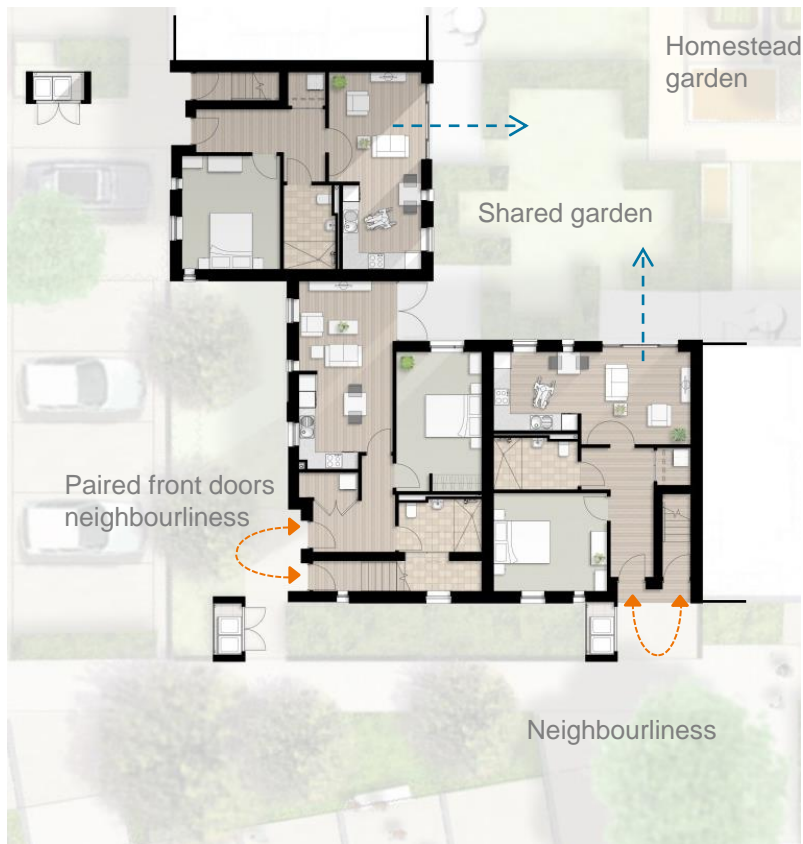
# Creating Communities within the New community



# Intergenerational Living at Oakfield



# Mixing the Generations: Walk-up Apartments



# Age in Place Cottages



# Community Hub





THE OAKFIELD