

+home

# Home of 2030



usefulprojects

mawsonkerr



## Home of 2030 Competition

***“Affordable, efficient and healthy homes for all”***

# Public Vision

1. **Fit for purpose**
2. **Gives people agency**
3. **Addresses the climate emergency**
4. **Connects people and their communities**
5. **Meets the needs of every life stage**
6. **Represents something different**



# +Home Objectives

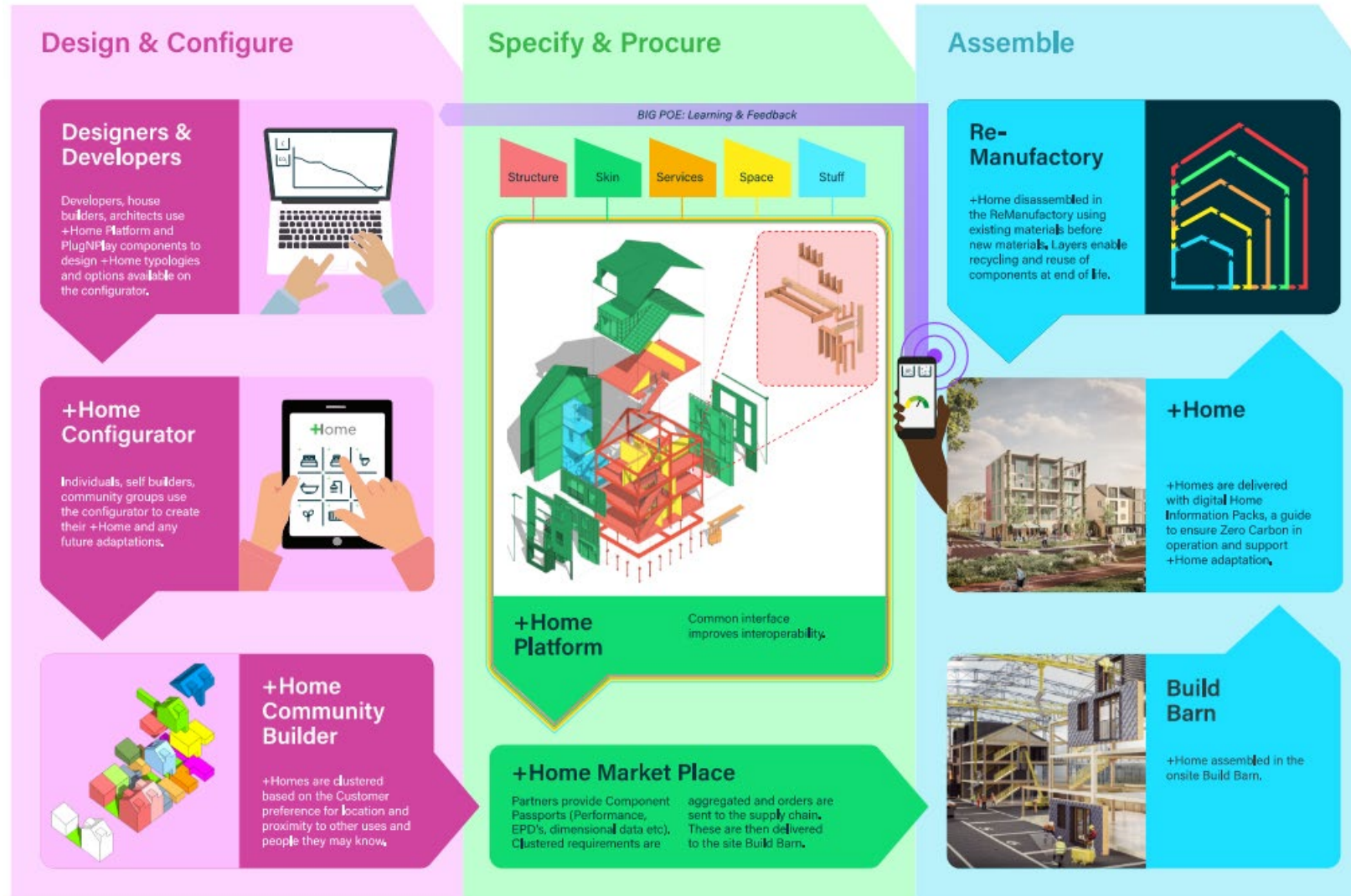
- **Meet individual needs**  
*Diversify housing supply to better meet individuals' and society's needs*
- **Planet Positive**  
*UpFront, InUse and Travel carbon*
- **Simple, fast & cost-effective build**  
*A system that can be adapted by all sizes of businesses*
- **Flexible and customisable**  
*Adapt to meet every occupier's individual needs during their lifetime*
- **Smart & Connected**
- *To build and to use*



# +Home Platform

A connected platform for developers, manufacturers, installers and home owners to:

- Configure and Design homes
- List components and materials in one place
- Direct link between configurator and installers to process orders
- Learning and Feedback in operation informs future designs
- Track existing materials for re-manufacturing



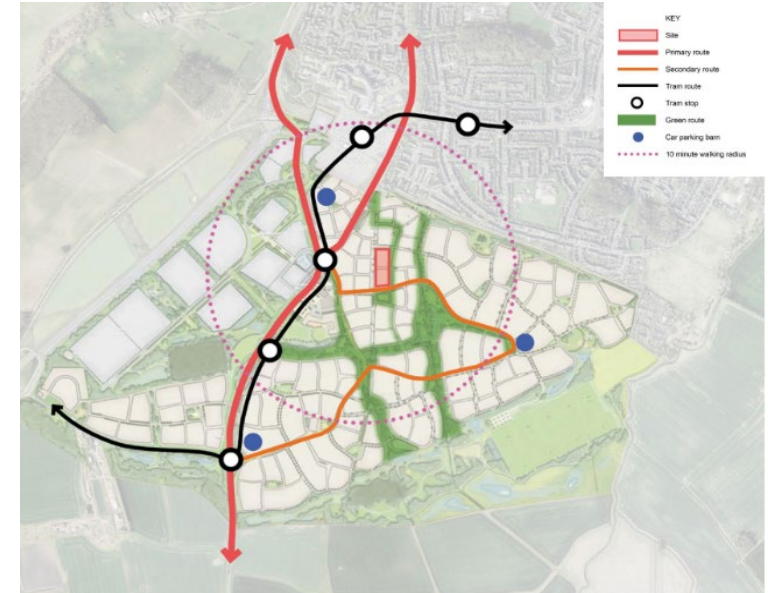
# +Home Masterplan



Green infrastructure and community gardens integrated with wildlife, drainage, overheating strategy and technology.



Flexible and accessible homes to allow for family, carer and community support alongside safe play areas.



Walkable, safe and connected streets to promote safe active travel with smart and connected infrastructure

# +Home Lifestyle



Social infrastructure, work from home, local services, community



Resource Hub to support community sharing and a circular economy.



Support active travel, pushing cars to the edge in parking barns and supporting shared mobility schemes.

# +Home Smart



Security measures include micro security drones lined to smart phones and digital locks.



Home appliances and technology connected to the Internet of Things (IoT) providing feedback to the +Home platform.



5G connected homes to facilitate flexible working patterns and improve communication for residents.



# +Home Inclusivity & Age Friendly



Smart home assistants to support residents and optimised their home and life.



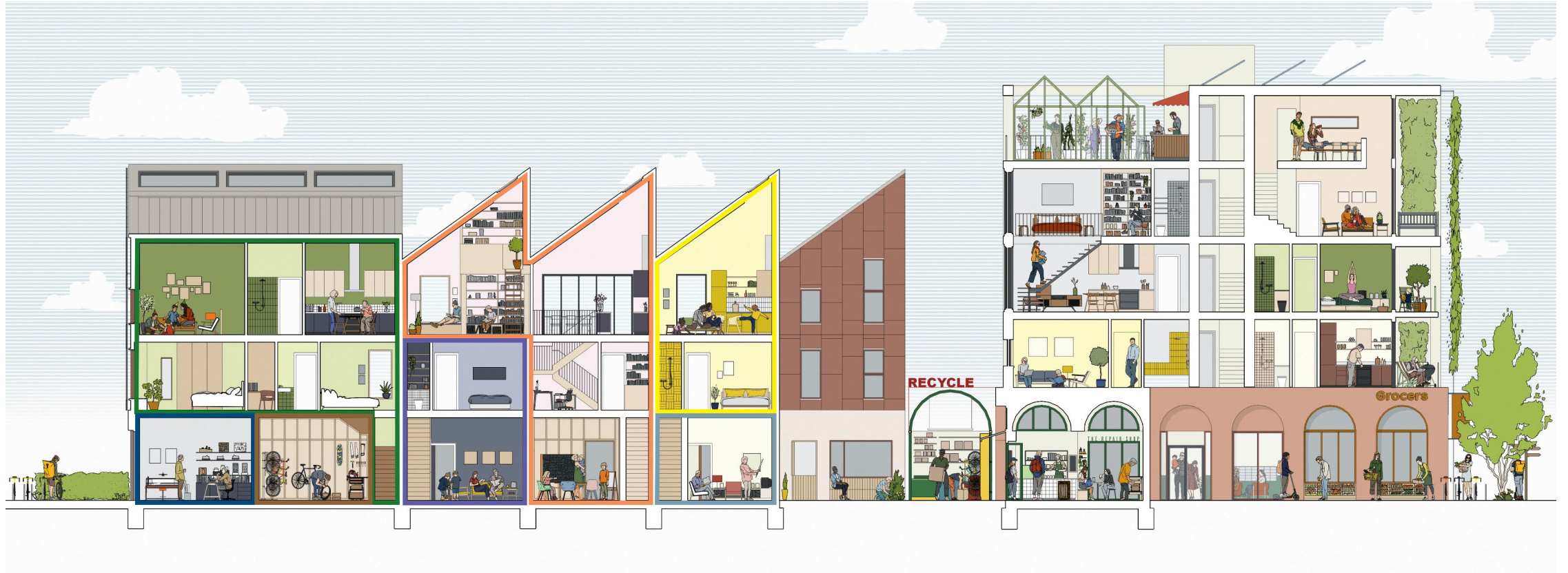
*"I love my ground floor self contained apartment. A proper granny flat with a lovely private garden with my grandkids coming and going from across in the mews house."*

Adaptable to suit lifetime need including converting floors for carers, rental or independent living.



Accessible and inviting community spaces for play and events.

# +Home Layouts



Layouts designed to be flexible and adaptable to meet individual needs across lifetimes and for all types of users.

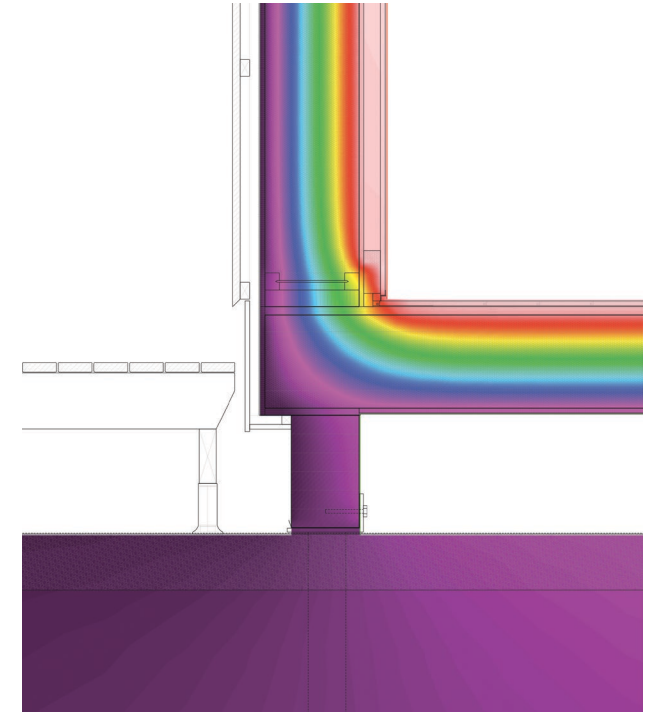
# +Home Passive & Active



Passive design focused to minimise UpFront energy and carbon. Self sufficient low energy homes with a mix of community and individual electricity storage solutions.

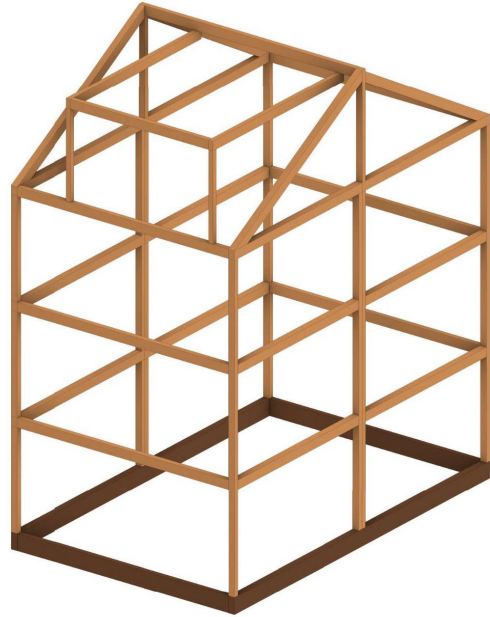


Layouts, external façade and masterplan designed to maximise passive design and minimise overheating.

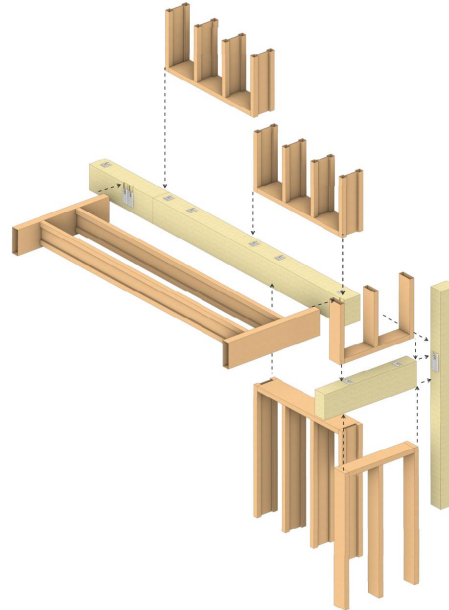


+Home Platform preapproves component for compliance with Passivhaus standards. With homes designed to ensure passivhaus compliance with future flexibility.

# +Home Materials



Structure and skin utilise low carbon and locally sourced timber with bio based and recycled materials for insulations, roof tyles and finishes

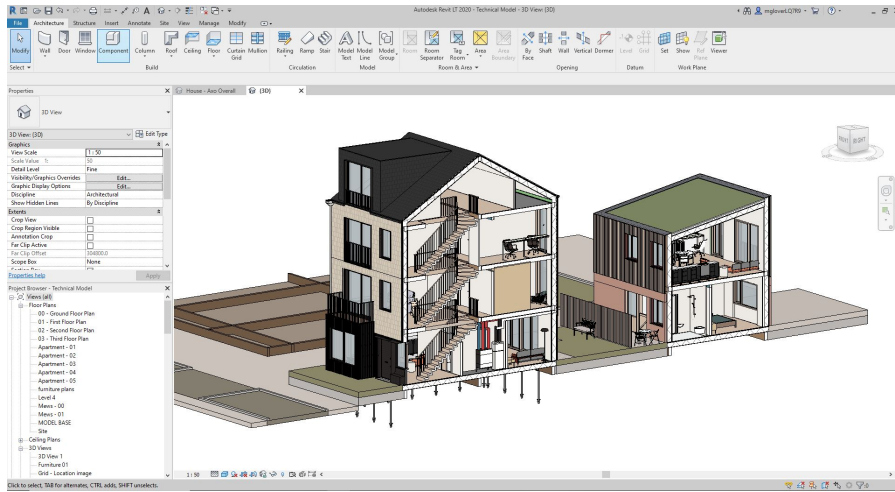


Components designed from structural cassettes to services through the +Home Configurator and allow for easy, error free assembly and disassembly.



+ Home market place ensures all components deliver zero UpFront carbon with links to supply chains and material specification available

# +Home Delivery



+Home configurator plugin to enable seamless digital design through BIM software like Revit



Components directly sent to +Home Site Build Barn to ensure speedy, clean and dry environment speeding up the delivery process



# Outcomes

- Fit for purpose
- Gives people agency
- Addresses the climate emergency
- Connects people and their communities
- Meets the needs for every life stage
- Represents something different