

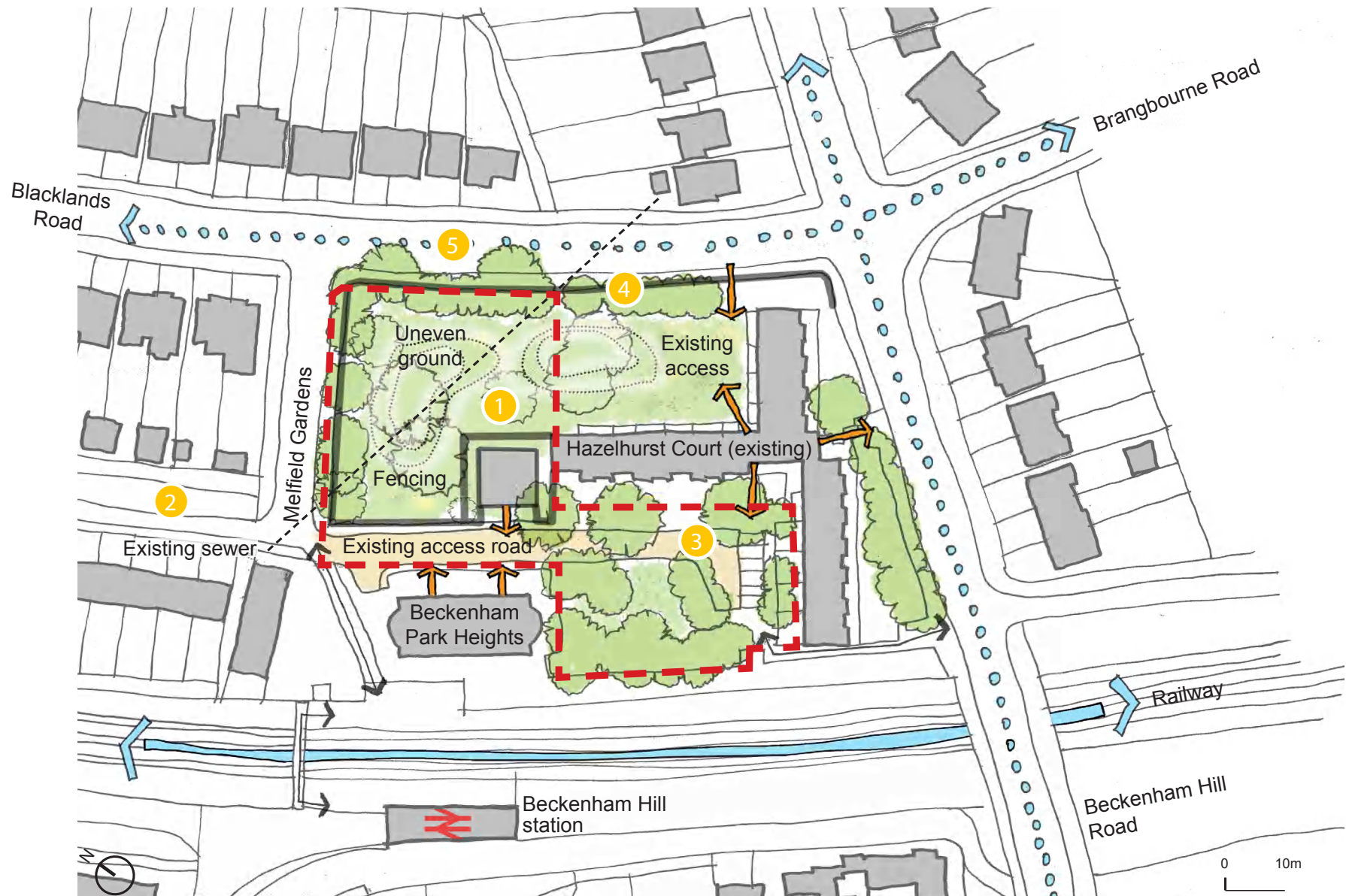
Levitt Bernstein People.Design

Hazelhurst Court

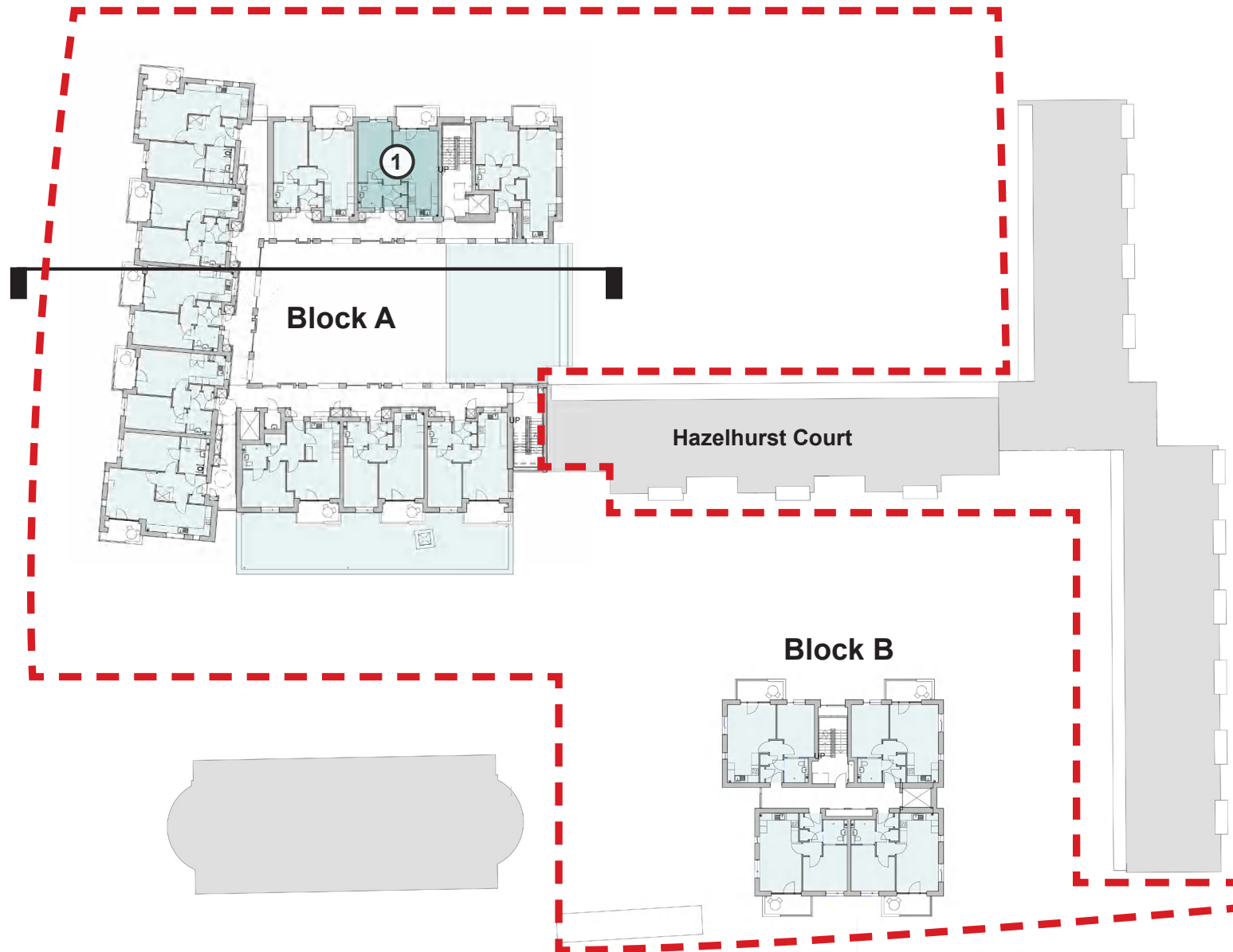
Beckenham, London

Tom Randle

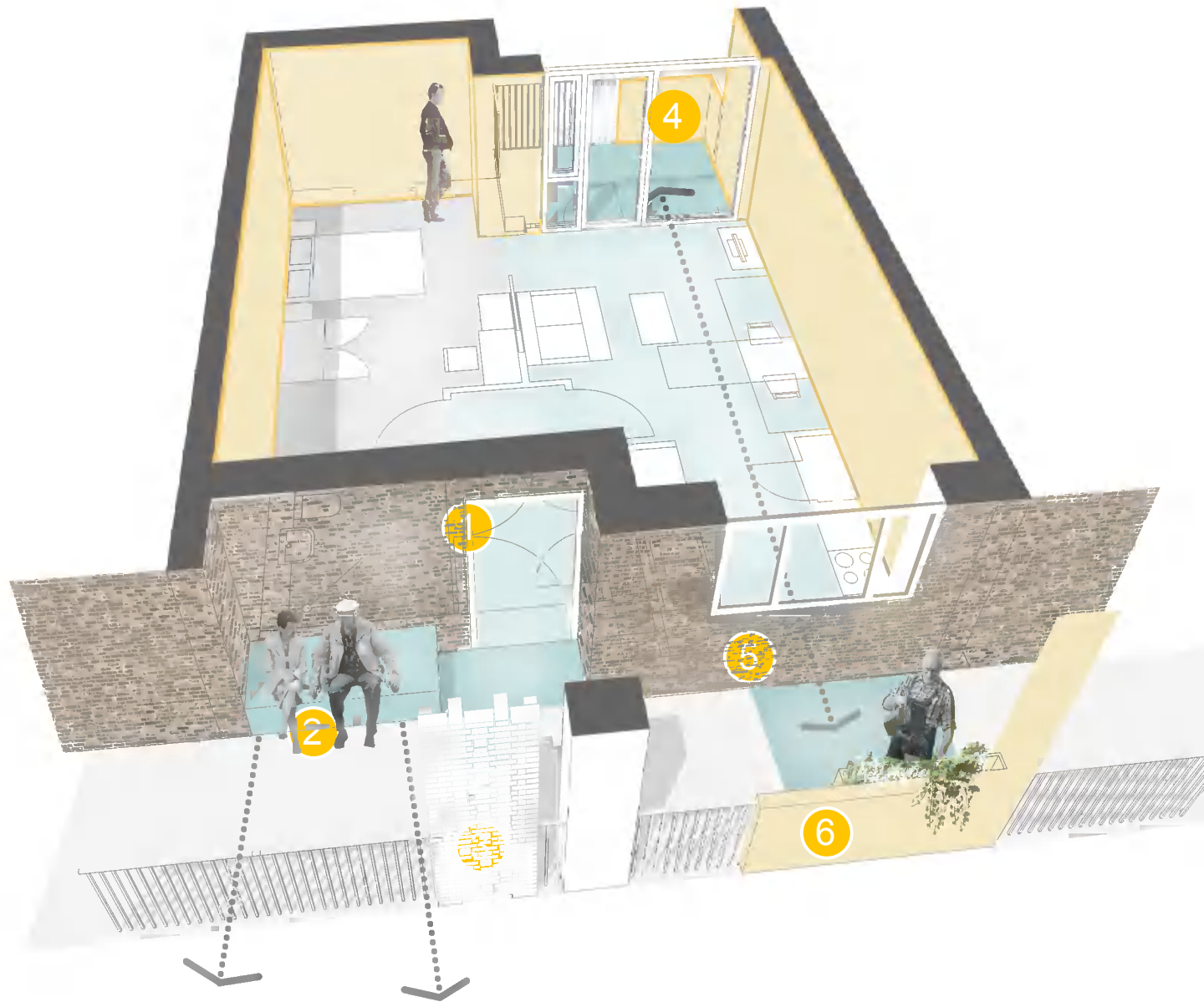
 @LevittBernstein





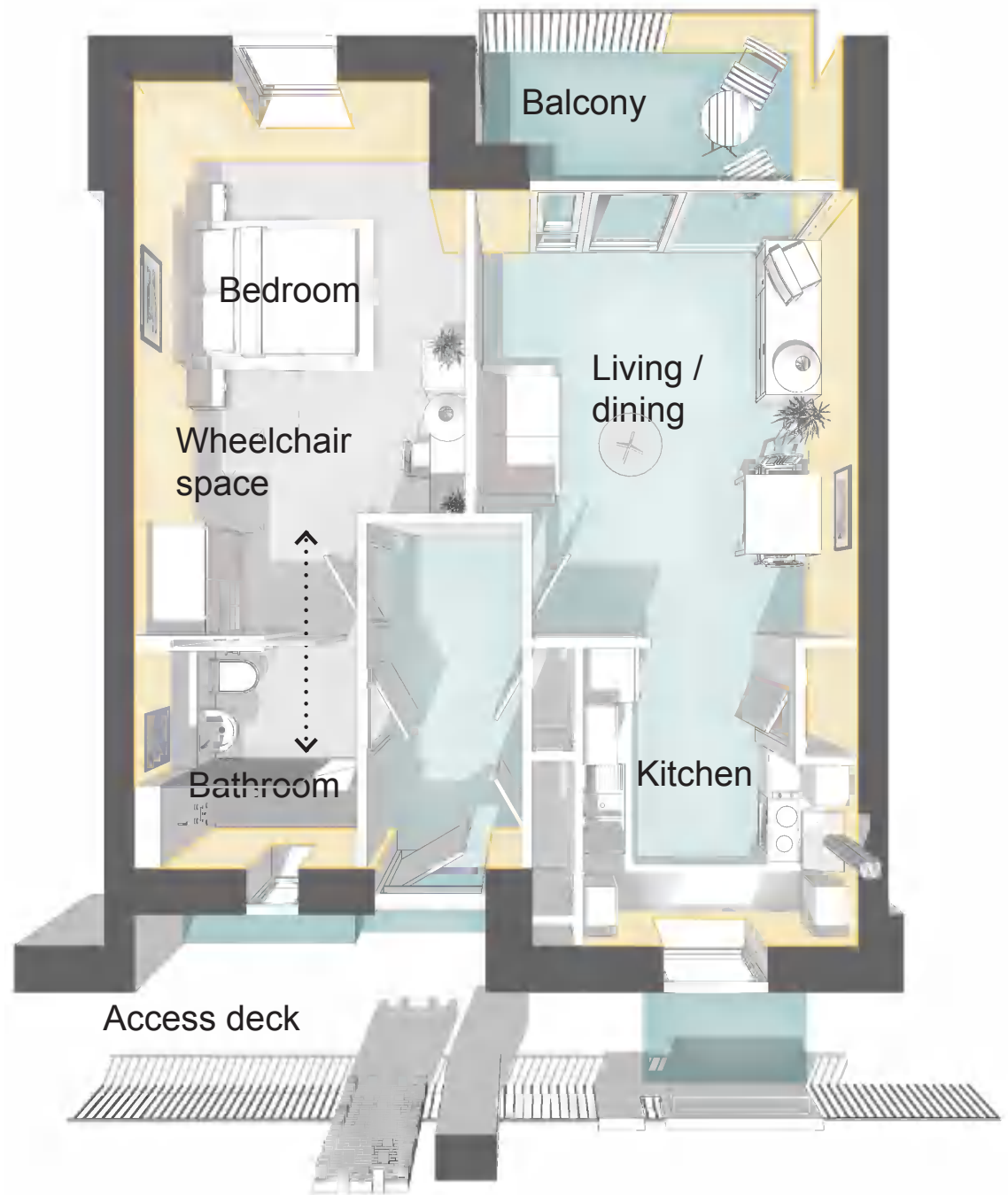


Concept diagram



- ① Recessed entrance area
- ② Seating area with outlook
- ③ Brick panel opposite front door creates privacy
- ④ Balcony made to feel like extension of room
- ⑤ Visual connection onto walkway
- ⑥ Growing/personalisation area





Typical flat type: 1B2P





The garden room at the heart of the scheme is intended to feel light and welcoming and offer views between shared amenity spaces

A planter is built in on the access deck outside each kitchen window to allow residents to grow their own herbs or flowers

Seating areas by front doors serve as meeting points and offer views down into the courtyard

Hit and miss brickwork provides shelter and privacy to front entrance doors



Section perspective: various measures were integrated into the design to bring the outside in, and so create a bright, comfortable and high quality environment for residents to spend time



























