



Housing LIN

The Stoke-on-Trent extra care PFI
July 2018

PRP



Issues Facing the City

- People aged 60 to 90 are due to increase from the 50,450 in 2001 to 56,350 in 2021 (12%)
- Number of people aged 50 to 90 predicted to increase from 80,250 in 2001 to 89,450 in 2021 (11%)
- Percentage of total population over 65 predicted to rise from 16% to 20% in 2031 and to 27% by 2071
- The number of people over 85 predicted to double in the next 20 years and treble in the next 30 years.

Vision & Scope

- Create a quality, sustainable and personalised housing solution that enables older people to live in their own home for longer;
- Provide a supportive environment that promotes health and wellbeing, maximising opportunity for older people to maintain or regain independence whilst ensuring ready access to care and support when required;
- Deliver a hub for local older people in surrounding neighbourhoods to access high quality day care, recreation and welfare support; and
- Enable people with physical or mental conditions to continue to participate and play an active role in their communities.

The PFI Timeline

OJEU Notice /PQQ

November - December 2011

ISOS Stage

April - May 2012

ISDS Stage

June- September 2012

ISRS Stage

January- April 2013

Call for Final Tenders

September 2013

Preferred Bidder announced

November 2013

Planning Consent Secured

March 2014

Start on site

June 2014

Completions

Willow Barns complete May 2016

Oak Priory complete August 2016

Maple West complete April 2017





Maple West
Chell

Baskeville House
Middleport

Oak Priory
Abbey Hulton

West End Village
Penkhull

Willow Barns,
Blurton

Rowan Village
Cookshill



**Oak Priory
Abbey Hulton, Stoke-on-Trent**

SHORTLISTED - HOUSING DESIGN AWARDS 2018
HAPPI COMPLETED AWARD





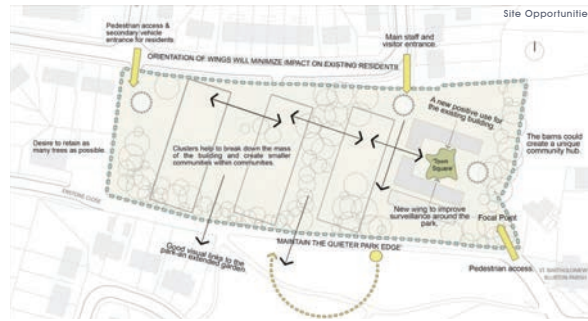
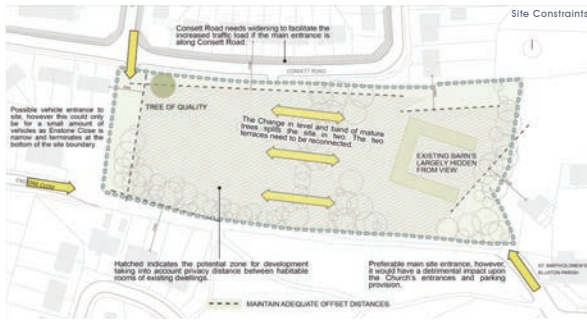


**Maple West
Chell, Stoke-on-Trent**

WINNER - RICS REGIONAL AWARD 2018







A Concept which Appreciates the Local Context



View of Entrance Atrium



View of Reception Area

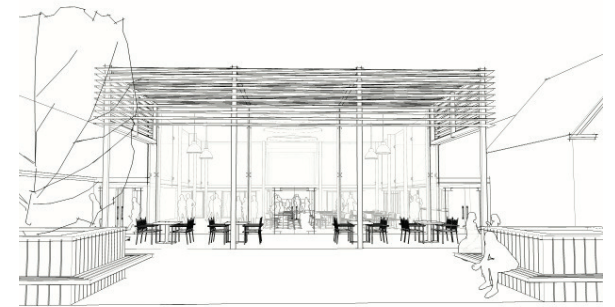


Willow Barns Blurton, Stoke-on-Trent

- WINNER - HOUSING DESIGN AWARDS 2017 – HAPPI COMPLETED AWARD
- WINNER – LABC 2017 BEST AFFORDABLE NEW HOUSING DEVELOPMENT
- WINNER – RIBA REGIONAL AWARD 2018



View from St Bartholomews, Church Road



The Village Square 01



View of Main Entrance from Consett Road



The Front Door





WILLOW BARNES

Manchester London Surrey

www.prparchitects.co.uk