



Providing Specialist Supported Housing

Sue Ryde and Julia Godwin
Oxfordshire County Council



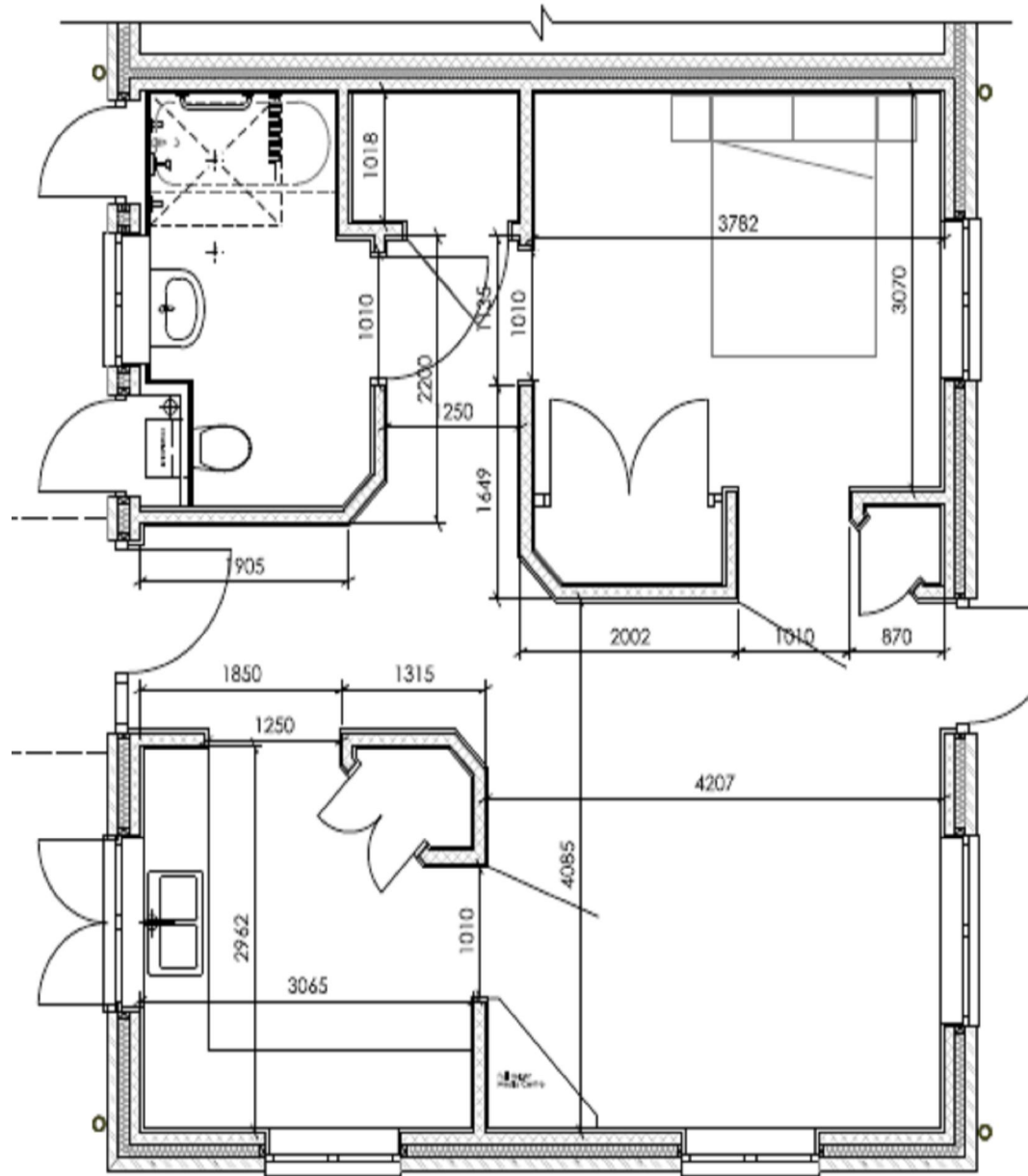
- A Housing Strategy for Specialist Supported housing
- This defines need, numbers, location and types of clients
- Understanding how above translates into a housing brief
- How does this get delivered
- An alternative to Out of County for clients with complex needs and Autism.(Winterbourne legacy)



- Finding a partner to develop with
- Finding the right site
- Putting together the business case
- Developing a specification, using specialist consultants and OT's
- Consulting with families and carers
- Development agreements and nominations
- Capital funding !!
- **Banbury and Bicester Autism units with Cherwell District Council**



**Location sensitive,
Land site area important
Individual space plus communal areas
Workforce retention and burnout
Revenue savings from shared support**



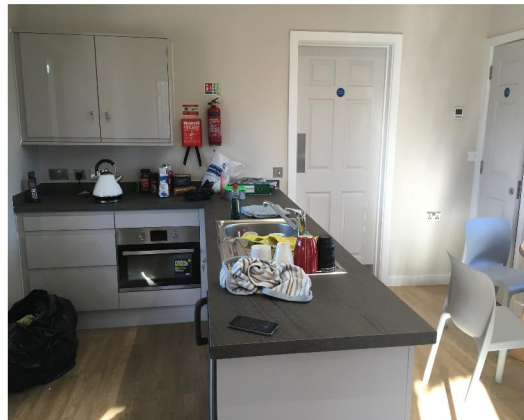


Design considerations

External and Internal Staffing, Maintenance

individuals





**Autism friendly
design
Specialist input
Low stimulating
environment
Robust
specification
including windows
Ability to tailor to
individuals
DOLS
Individual space
and shared space
Design to support
staff
Assistive
technology**



- OCC commissioned Care Model- shared core costs and individual hours 1:1 all day.2:1 4/5 hours to access community, shared sleeping night and individual waking nights.
- Procuring the care providers and workforce issues- complexity of clients
- New relationship between OCC, care Provider and Cherwell DC as landlord
- Where did people come from 19-28 residential college, hospital or families who had waited for the placement.
- Nominations and Service level agreements- voids, speed
- Rents, outturn costs – very expensive in capital terms, affordable housing, high service charges. (£186.33 plus £63.67 =£250.00/ week)



Lessons learned

- Savings initially based on placements but longer term expected to be more
- True alternative to 'out of County' and residential collage
- Need to co ordinate and identify resources for hospital discharge and specialist health input
- Need to review Nominations agreements for specialist schemes- naivety on everyone behalf.
- Need to work with the wider community in the longer term over acceptance

