



South
Cambridgeshire
District Council

Older Persons Housing Strategy

Stephen Hills
Director of Housing



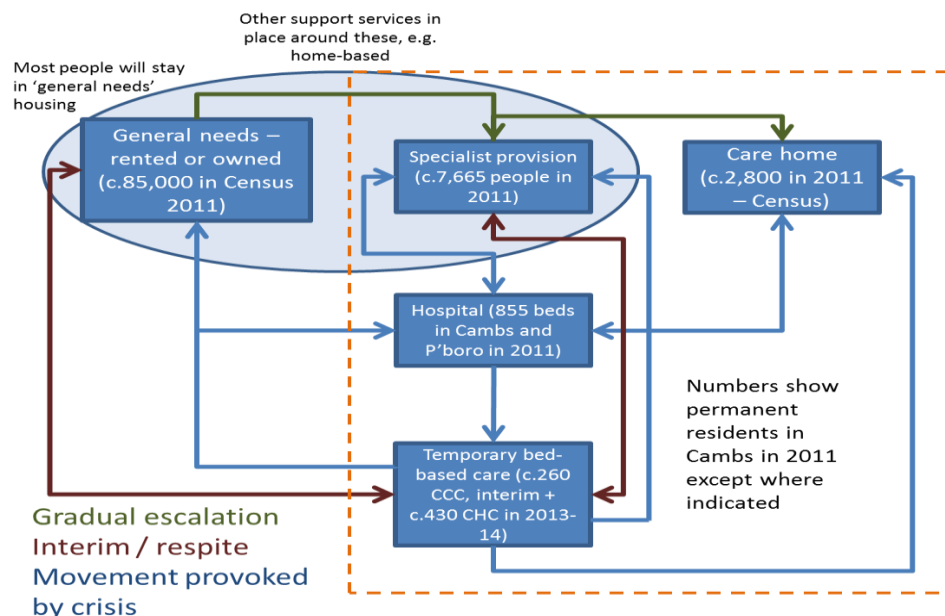
Bringing Care Closer to Home

- Need for professionals to plan together
- Health service pressures are immediate
- Poor housing costs NHS £2.5bn pa





Older Persons Housing Strategy

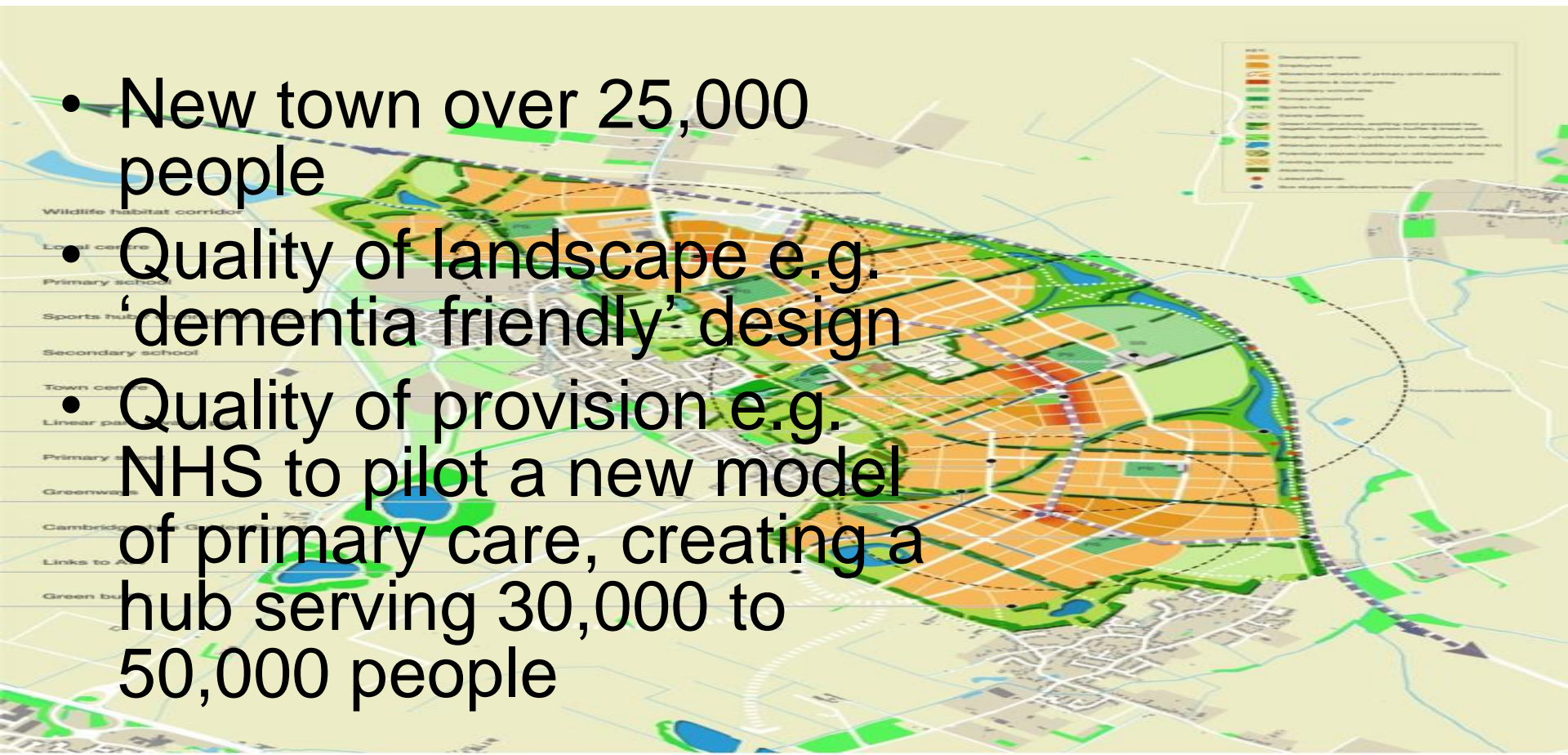


- Demographic analysis
- 30% increase in over 85s by 2036 compared to 5% in whole population
- Policy review (SHU)
- Supply analysis + dynamic model



Northstowe Healthy New Town

- New town over 25,000 people
- Quality of landscape e.g. 'dementia friendly' design
- Quality of provision e.g. NHS to pilot a new model of primary care, creating a hub serving 30,000 to 50,000 people





Northstowe Healthy New Town

- Housing offer – tenure, design,
- Service offer – support options
- Workforce considerations





HOPSR

- ‘SHU/SHOP model’
- Housing for Older People Supply Recommendations
- Forward projection model 17 years
- Assumption variables
- Whole country

Back to front page

Select local authority
Greater Cambridge

Select population growth
As projected

Select health change
Proportion: same

Select dementia rate change
Proportion: same

Current and future recommended supply of older people's housing

	Recommended supply	Current supply	Difference	Recommended future supply		
				2025	2030	2035
Age Exclusive (units)	1,145	239	-906	1,619	1,835	2,062
Specialist (units)	3,422	3,280	-142	4,839	5,485	6,163
Sheltered	3,057	2,945	-112	4,323	4,901	5,506
Enhanced sheltered	90	48	-42	127	144	161
Extra Care	275	287	12	389	441	496
Care beds	2,156	1,825	-331	3,049	3,456	3,883

Recommended supply of older people's housing: tenure split

	Recommended tenure supply			
	Current	2025	2030	2035
Age Exclusive (units)				
Rented	1,055	1,055	1,218	1,483
Owner	89	89	103	125
Sheltered (units)				
Rented	2,564	3,627	4,111	2,099
Owner	492	697	790	887
Enhanced Sheltered (units)				
Rented	49	69	79	88
Owner	41	57	65	73
Extra Care (units)				
Rented	240	339	384	432
Owner	35	50	57	64



Conclusion – next steps

- Further analysis of extra care and sheltered housing demand & refresh of strategy
 - Engagement with private sector providers
 - Continue to develop learning through action at Northstowe-further events to follow
-
- A photograph of a modern, multi-story brick care home building with a central glass entrance and a covered outdoor seating area. A person in a wheelchair is visible on the left, and several people are sitting in the courtyard area. The building is surrounded by green lawns and trees.



South
Cambridgeshire
District Council

Welcome – enjoy the day!