



The
University
Of
Sheffield.

dwell
designing for wellbeing
in environments
for later life

Improving older people's mobility & wellbeing through design: Findings from the DWELL Project at the University of Sheffield



Dr Lee Crookes

Co Investigator

Ann Clark

Research Administrator

Dr Sarah Barnes

Co Investigator

Dr Friederike Ziegler

Research Associate



Dr Adam Park

Research Associate

Prof Sarah Wigglesworth

Principal Investigator

Prof Malcolm Tait

Co Investigator



The
University
Of
Sheffield.

dwell
designing for wellbeing
in environments
for later life

Improving older people's mobility & wellbeing through design

- Funded by UK Research Councils (EPSRC, ESRC, AHRC)
- A 3 year project running from Jan 2014 – Dec 2016
- A partnership between University of Sheffield researchers, Sheffield City Council, housing providers, community organisations, and residents of Sheffield.
- A focus on moving beyond 'best practice' to consider implementation and diversity of potential responses



**DESIGN FOR
DOWNSIZING**



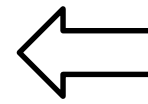
**AGE-FRIENDLY
NEIGHBOURHOODS**



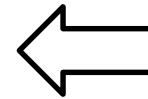
**HOUSING WITH CARE / SUPPORT
(DESIGN + DELIVERY)**



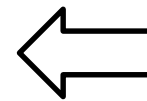
**PLANNING FOR AN AGEING CITY
(SHEFFIELD LOCAL PLAN)**



**DWELL-led
projects**



**Joint project between
DWELL and SCC**



**Sheffield City Council-
led project**







The
University
Of
Sheffield.

dwell
designing for wellbeing
in environments
for later life

Age is not just a number

“Future housing must reflect
the diversity of our ageing
population.

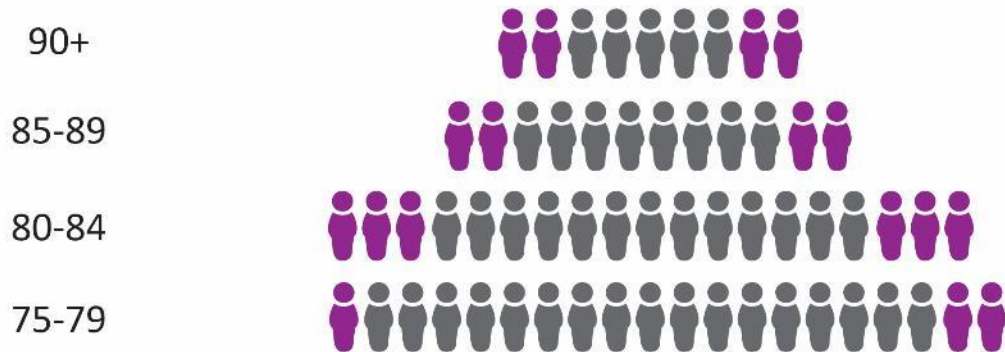
”



PLANNING FOR AN AGEING CITY (SHEFFIELD LOCAL PLAN)

Sheffield in 2030

RESIDENTS AGED 75+



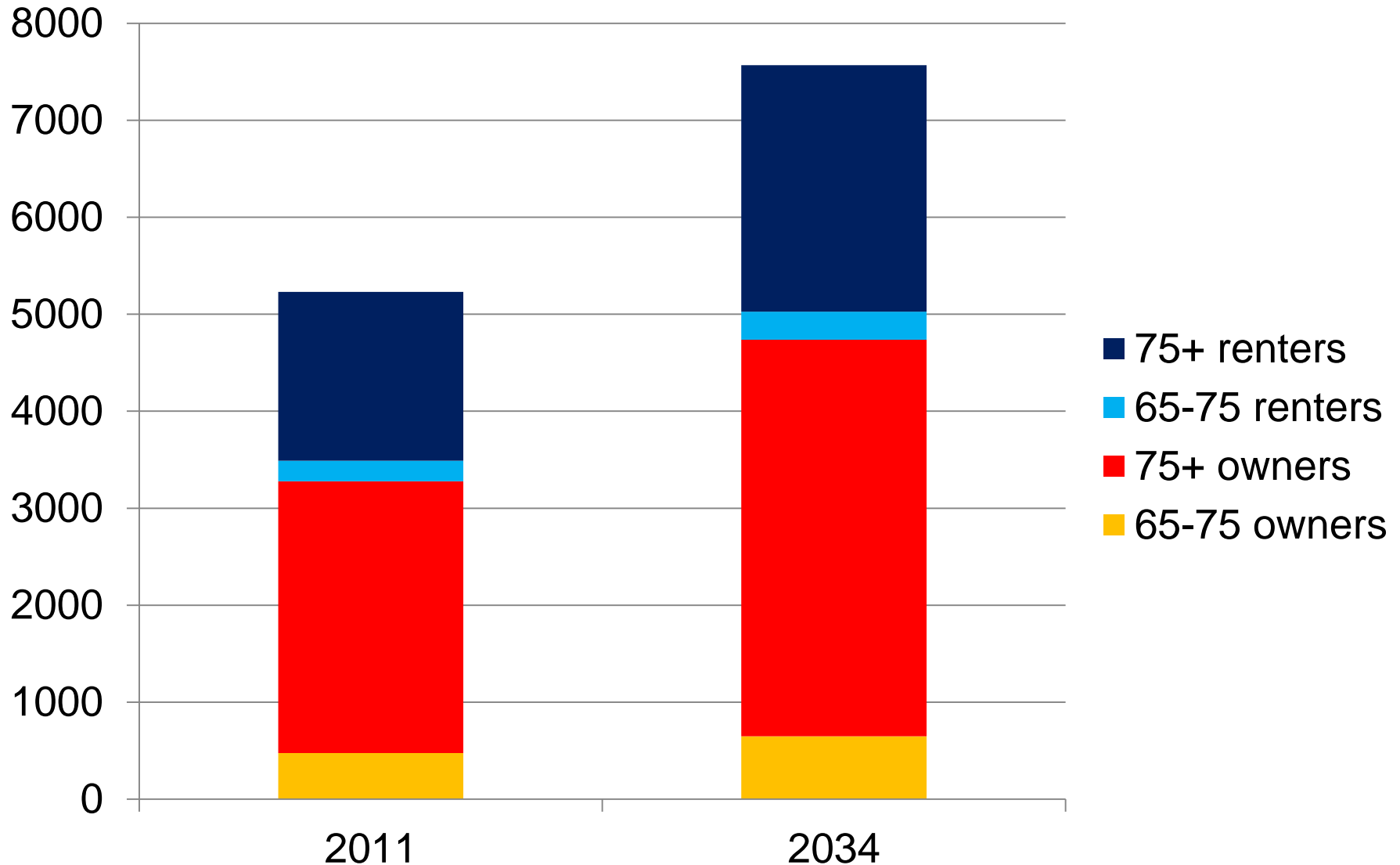
PROJECTION: 60,000
(+17,000)

HOUSEHOLDS AGED 75+



PROJECTION: 44,000
(+12,000)

Number of people in Sheffield seeking to move into retirement housing





Growing demand for older peoples' housing represents a significant challenge for local and national policy-makers.

DWELL research indicates that by 2034, there will be a shortfall of around 5000-8000 purpose-built retirement dwellings in Sheffield alone.

DWELL research formed part of the evidence base for Sheffield City Council's Older Person's Independent Living Strategy 2017-2021



AGE-FRIENDLY NEIGHBOURHOODS



The
University
Of
Sheffield.

dwell
designing for wellbeing
in environments
for later life

Beyond the front door

“Homes for later life must be integrated into age-friendly neighbourhoods.”







Introduce a community toilet scheme

- 3.00pm

We're participating



DORE VILLAGE
Community
Toilet Scheme





Improve pedestrian crossings and widen pavements

The existing junction of Dore Road and High Street.



Dore Village
OFFICE UPSTA

DID YOU KNOW
375 people lived in Dore at the end of the 19th Century. There are now over 7000 residents!

The Future of Dore Village: What's YOUR vision?

"The pavements are bumpy and we think there should be more benches and public toilets!"

"I don't think Dore is a 'green' village because there are so few cycle crossings!"

Dore residents has been developing...
...and researchers from the...
...INTELL project to improve...
...of all ages...

The age of all
children below
the city-wide
average)

**Top 3
improvements
identified by
local children**
The top 3 range of ideas
is: better parks + activities
improved bus services
(with road crossings)

**Broaden the
choice of new housing
available**

**Introduce a disc
parking scheme in the
village centre**

**Establish a
local hub for IT skills
and advice**



Low priority Low priority Low priority	High priority High priority High priority	Medium priority Medium priority Medium priority	Low priority Low priority Low priority
--	---	---	--





DESIGN FOR DOWNSIZING



The
University
Of
Sheffield.

dwell
designing for wellbeing
in environments
for later life

Changing aspirations

“The next generation are much more likely to consider downsizing to a city centre or town centre apartment.

”

Evans Vettori – Parkside mixed-use development, Matlock







ASSISTED LIVING (EXTRA-CARE)
APARTMENTS WITH COMMUNAL
FACILITIES AT GROUND FLOOR

LIFT-ACCESSED
RETIREMENT APARTMENTS
OVERLOOKING THE RIVER

THE PORTER BROOK OPENED
UP TO ENABLE VIEWS OF
WATER & WILDLIFE

SUPERMARKET WITH
"GENERAL-NEEDS"
APARTMENTS ABOVE

COVERED WALKWAY TO LINK
ASSISTED LIVING WITH CAFE /
COMMERCIAL FACILITIES

WAREHOUSE CONVERTED INTO A CAFE /
BISTRO WITH MULTI-PURPOSE
COMMUNITY ROOM UPSTAIRS

FIVE "DOWNSIZE" TOWNHOUSES
LOCATED AT THE MORE PRIVATE
END OF THE SITE

PORTER BROOK OPENED UP
TO CREATE A RIVERSIDE
SCULPTURE TRAIL





Sylvester Gardens – a mix of houses, apartments and community facilities



Sylvester Gardens – a mix of houses, apartments and community facilities



Age-friendly Urban Living

A group of 100 local residents have been working on the design of a new urban development, and now we are looking for your views on the design and how it will be used.

Our 100 local residents have been working on the design of a new urban development, and now we are looking for your views on the design and how it will be used.



For more information, please contact the project team on 01273 333333 or visit our website at www.agefriendlyurbanliving.co.uk

FOR MORE INFORMATION
CONTACT THE PROJECT TEAM
ON 01273 333333
OR VISIT OUR WEBSITE
AT [WWW.AGEFRIENDLYURBANLIVING.CO.UK](http://www.agefriendlyurbanliving.co.uk)





The
University
Of
Sheffield.

dwell
designing for wellbeing
in environments
for later life

It's not just about apartments!

“Housebuilders and planners are failing to keep up with the growing demand for adaptable houses and bungalows.

”

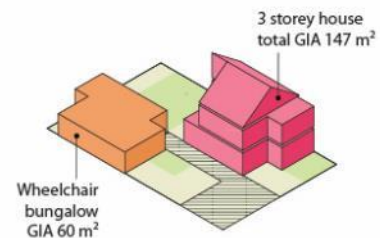


PE

NW orientation

variety of
layouts for ind
cater for ind
base/pub

Chequerboard house + annexe

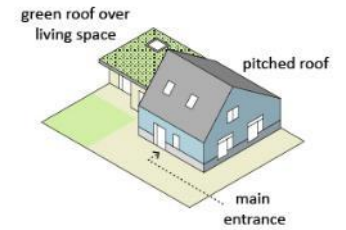
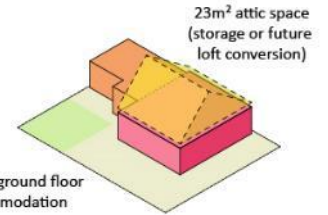
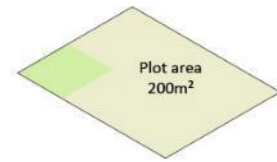


pedestrian-friendly street layout

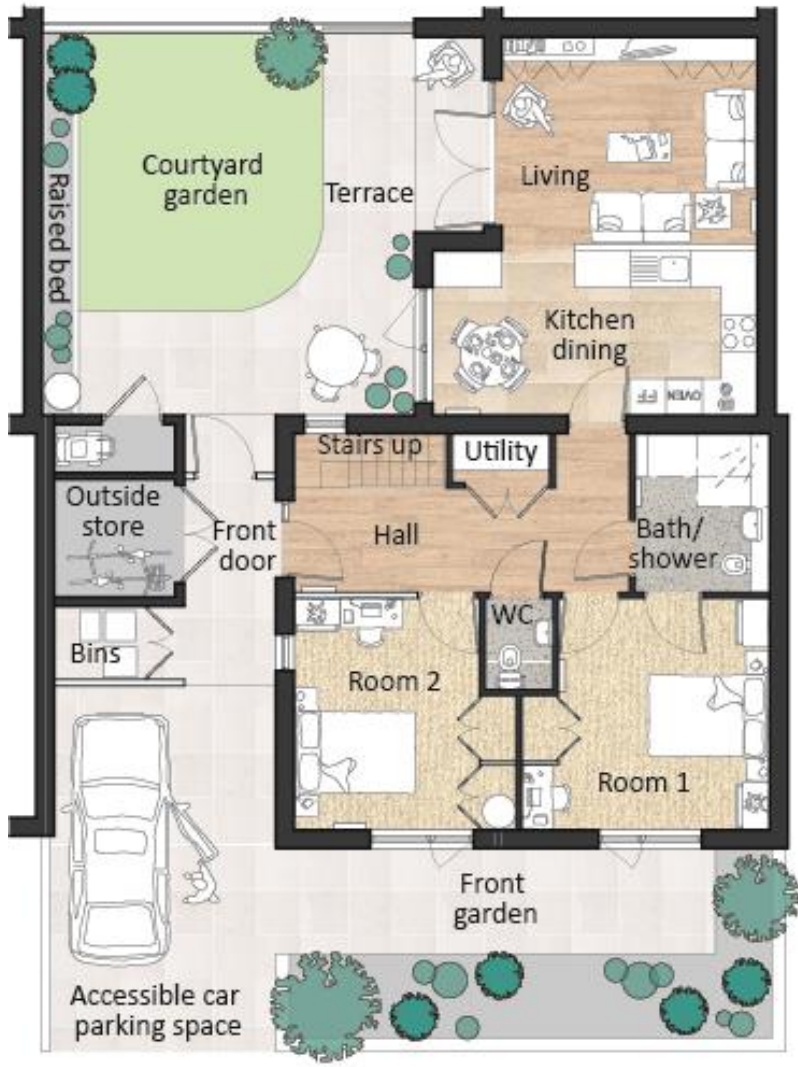
Chequerboard house + annexe



Courtyard bungalow



Courtyard bungalow





The
University
Of
Sheffield.

dwell
designing for wellbeing
in environments
for later life

- 1** Ageing as a diverse process, not a number
- 2** Local and national leadership and planning
- 3** Age-friendly neighbourhoods
- 4** Changing aspirations
- 5** Downsizing choice in the city / suburbs

5 ways to well-being in environments for later life

Employ residents in housing management + local decision-making.

Provide green + activity spaces (e.g. allotments), promote walking + cycling.

Promote informal social (e.g. shared spaces) and provide space for visitors + guests.



Provide space for hobbies/ activities and integrate new technologies.

Provide plenty of daylight, fresh air, interesting views, and front doors/ gardens.



The University
Of Sheffield.

dwell
designing for wellbeing
in environments
for later life

Spreading the DWELL message





The
University
Of
Sheffield.

dwell
designing for wellbeing
in environments
for later life

*Further information & electronic copies of
DWELL reports:*
<http://dwell.group.shef.ac.uk>

DWELL Research Project Team:

Sarah Wigglesworth, SSoA

Prof Malcolm Tait, USP

Dr Sarah Barnes, SchARR

Dr Lee Crookes, USP

Dr Adam Park, SSoA

Dr Friederike Ziegler USP

EPSRC
Engineering and Physical Sciences
Research Council

E·S·R·C
ECONOMIC
& SOCIAL
RESEARCH
COUNCIL



Arts & Humanities
Research Council