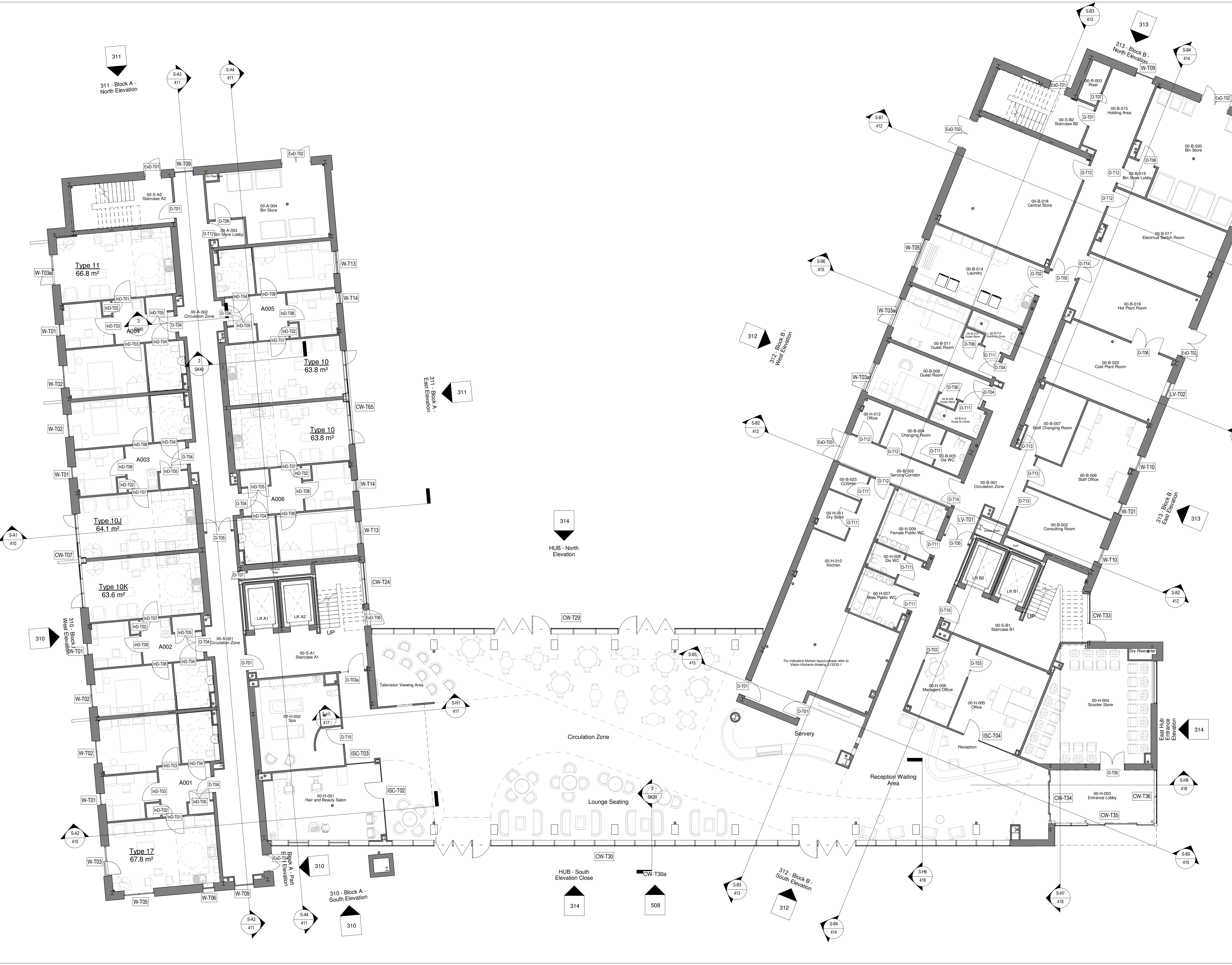


Notes
The Contractor is to check all dimensions and conditions on site before commencing. Do not scale from this drawing.
This drawing remains the copyright of POZZONI LLP.

Scale Bars TO BE USED ONLY AS GUIDANCE

1:100	mm	0 1000 2000 3000 4000
1:200	mm	0 1000 2000 3000 4000
1:500	m	0 10 20 30 40
1:1250	m	0 10 20 30 40



Rev	Description	By	Date
1	First Issue	KJ	04/10/13
2	Revised Preliminary GA's	KJ	06/11/13
A	Issued for Tender	AM	31.01.14
B	Apartment layouts added	AM	12.02.14
C	Hub interior layout alterations following manager comments	AM	15.05.14
D	Plant Room alterations following Biomass confirmation	AM	10.06.14
E	Issued For Contract	KJ	18.06.14
F	Construction Issue	CR	27.01.15
G	Kitchen, Laundry and Public WC layouts updated	CRS	30.03.15
H	COSH store relocated, kitchen layout updated. Dividing wall added to Plant Room. External louvre to Central Store 00-B-017 removed. Laundry room layout updated, external door removed. Central Store divided to form new Commercial Bin Store and external single door updated to double louvered door.	PR	24.06.15
I	Commercial bin store removed. Central store renamed Electrical Switch Room. External door replaced with window. COSHH and office relocated. Glulam columns and RWPs within HUB updated. Spa layout updated. Apartment layouts added.	PR	28.07.15
J	Internal wall types updated	PR	15.09.15
K	External door swings updated. Block A Bin Store door ExD-0-A03 repositioned	PR	23.09.15
L	Doors between apartment bathrooms and bedrooms removed. Door, window, curtain wall tags added.	PR	13.10.15

Client	Wythenshawe Community Housing Group		
Project	Village 135		
Drawing	Ground Floor GA		
Block	P3642-HH_200	Rev	L
Date	10/06/14	Scale	1 : 100 @ A1
Project Status	CR	AM	CR
Design	Contract	As Built	

pozzoni

Working in conjunction with **GallifordTry**

London House
115 Golden Lane
London
EC1Y 0TJ

Woodville House
2 Woodville Road
Atrincham
WA14 2PH

+44 202 787 0079
architects@pozzoni.co.uk

+44 161 928 7848
www.pozzoni.co.uk

POZZONI BIM
using AutoCAD Revit

©/Revit Local Files/P3642-Hollyhedge-Central_prel.rvt
15/10/2015 16:02:34