

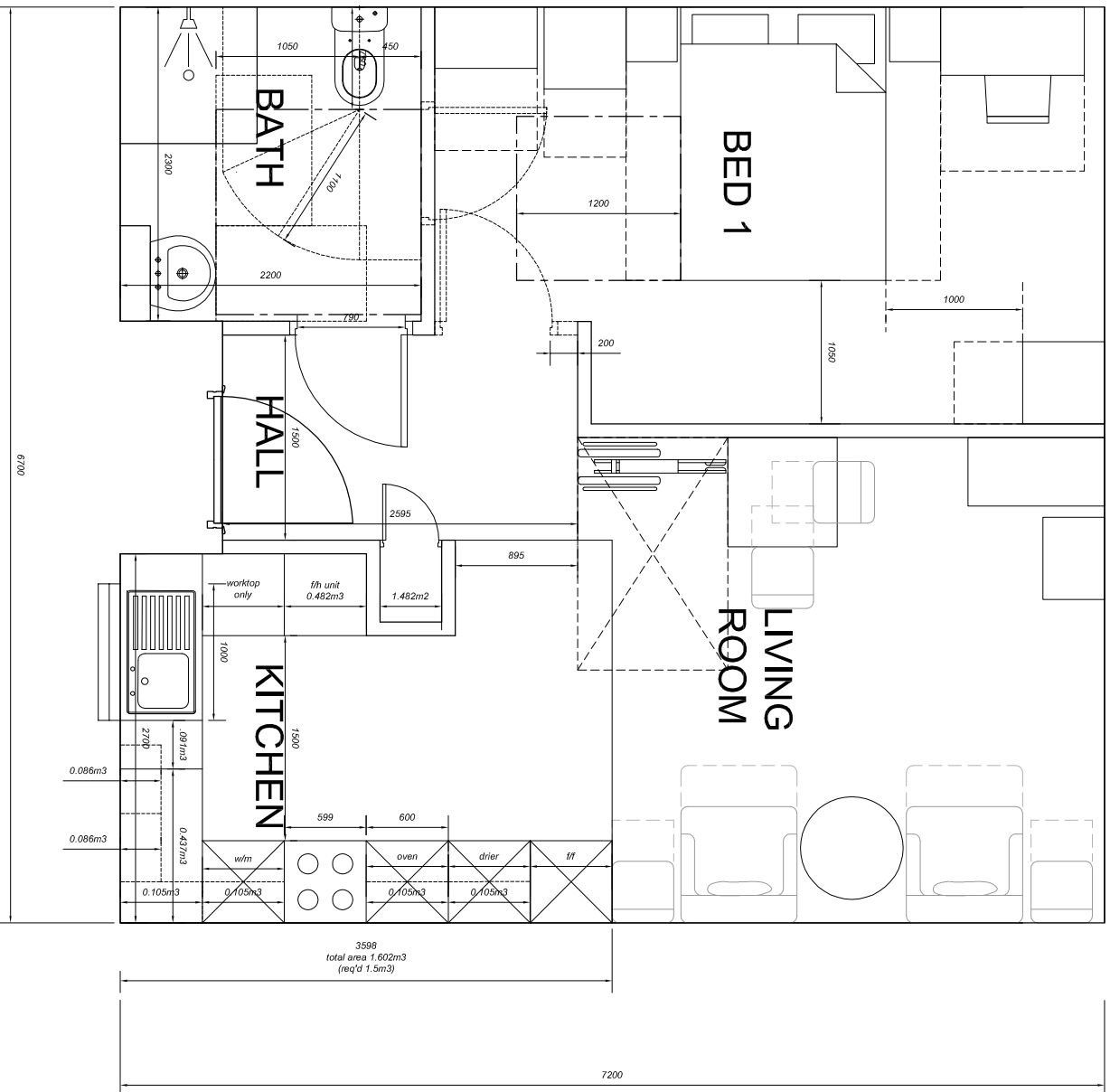
NOTES:

1. DO NOT SCALE from the drawing
2. Further Dimensions required to be requested from Project technical team.
3. Report all discrepancies to JDDK project technical team IMMEDIATELY
4. Refer to the following ASSOCIATED DRAWINGS:-

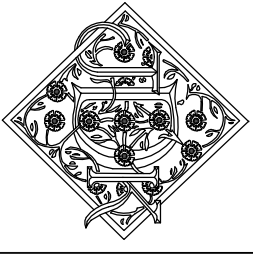
Revision Log

Rev	Initials	Date	Description

- **AUDIT OF 1 BEDROOM APARTMENT**
- Allows for installation of bath in lieu of shower in accordance with Wheelchair Design Guide
- Allows for 1100mmx1700mm transfer space (located in lounge) in accordance with Wheelchair Design Guide
- Provides 1500x1500mm manoeuvring space clear of all fittings (within the bathroom) in line with Wheelchair Design Guide
- 300mm to leading edge of door in bed 1 (with 200mm to the push side) in accordance with Lifetime Homes and Wheelchair Design Guide
- 1m access to both sides and bottom of double bed in accordance with Wheelchair Design Guide
- Space for oven, separate hob & 3no other white goods within kitchen layout in accordance with Wheelchair Design Guide
- Recess provided at apartment entrance to accentuate boundary between public space and private space



1 BED APARTMENT - AREA 475SQM



Jane Darbyshire and David Kendall Limited
 Chartered Architects and Landscape Architects
 Millmount, Ponteland Road, Newcastle Upon Tyne, NE5 3AL
 Telephone +44 191 286 0811 Facsimile +44 191 286 3870
 email millmount@jddk.co.uk
 www.jddk.co.uk

CLIENT Cestria	
PROJECT TITLE Extra Care	
TITLE 1 Bed Apartment	
QUANTITY SURVEYOR	MAKE CONSULTANT
STRUCTURAL CONSULT.	OTHER
OTHER	OTHER
DRAWING No. Job Ref Type	Revision No.
20	02
SCALE:- DATE:-	PAPER SIZE:- CHECKED BY:-
1:50 04.12.12	A3 MM
DRG STATUS:- PRELIMINARY	