

# HENDAL LANE

## EXTRA CARE PROVISION

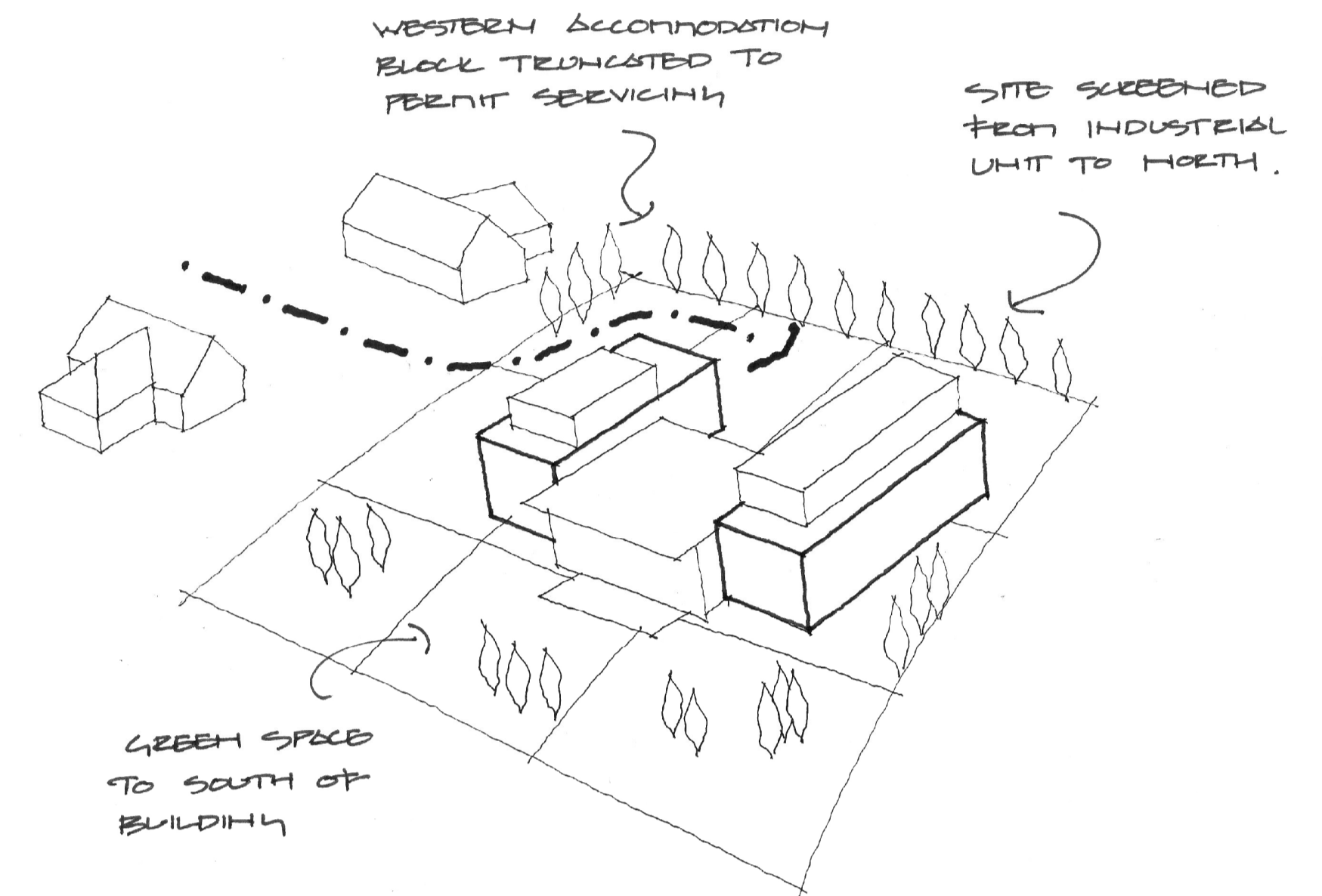
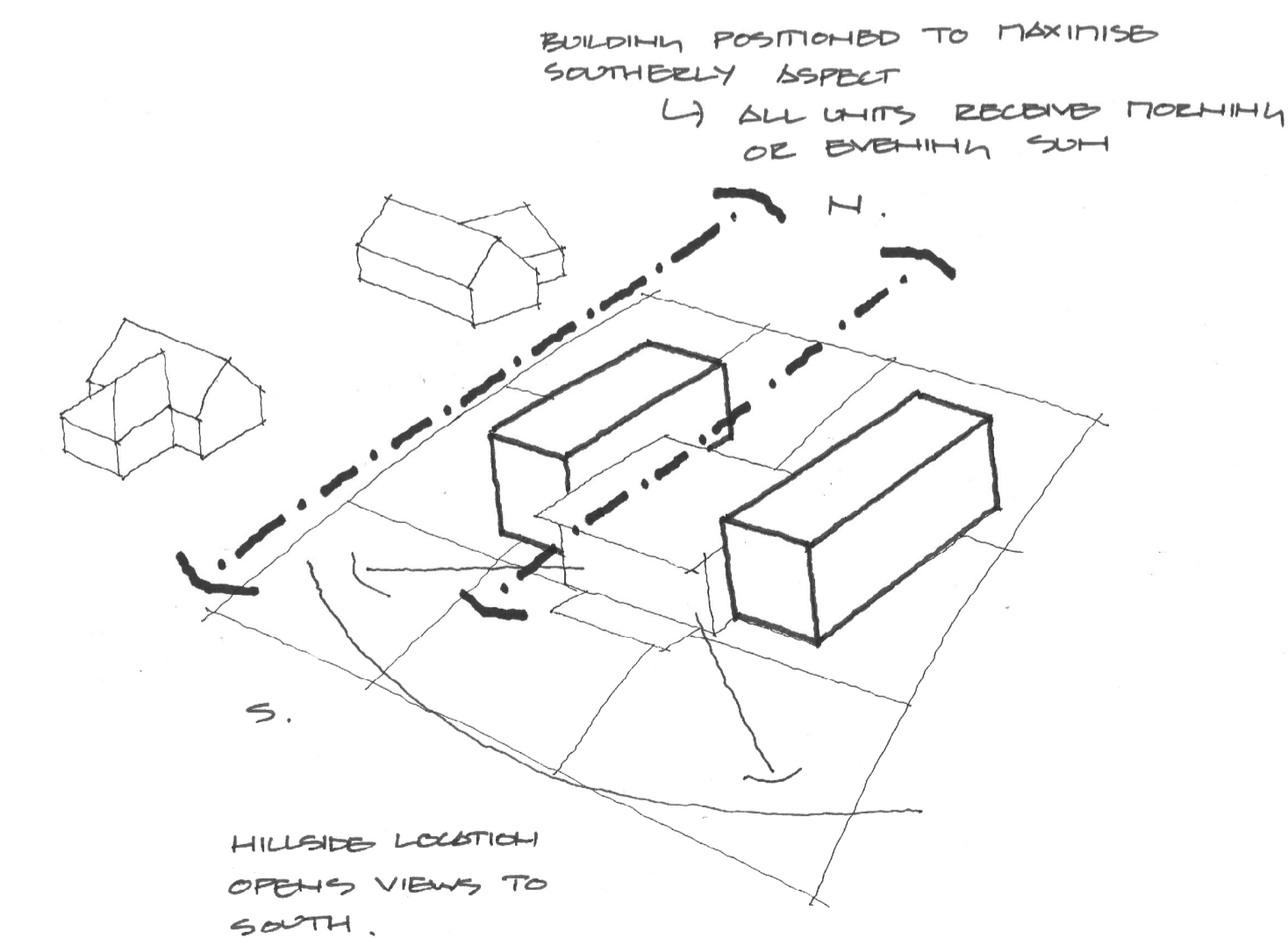
### 1.0 Introduction

The scheme comprises 30 no.1-bed units, 15 no. 2-bed units, a guest unit and a staff unit, together with associated office/administration, daycare, bistro, treatment and leisure accommodation. The proposed building is orientated on a Northwest-Southeast axis on the site, and is arranged in a composition incorporating three distinct forms, with the East and West wings housing the accommodation units, ordered around a central pavilion which contains all other facilities.

### 2.0 Design Objectives

Initial design objectives focused on attempting to meet the Clients aspirations to provide modern extra care facilities in line with the latest guidance, in a contemporary design solution fit for the Twenty-first Century. Consequently, the design approach adopted was that usually applied to the provision of high quality private sector housing developments, rather than viewing the building as an institutional style facility separate from its surrounding land uses.

The opportunities provided by the topography, with the dominant South facing slope, also had an important influence on the design process, with the potential for expansive views out from the site and high levels of sunlight reaching in. In this regard the site lends itself very well to the potential benefits of sustainable and thermally efficient design techniques, areas in which the Client has a strong interest. The pre-requisites of modern, stylish energy efficient development outlined above prompted precedent study of contemporary scandinavian domestic architectural design, influencing the the materials chosen and the incorporation of private external spaces to each dwelling unit.



### 3.0 Design Concept

The plan form and resultant elevational treatment of the proposal is therefore intended to maximise the sites potential for energy efficient design, affording all units a Southern view and the prospect of either morning or evening light. The contemporary style of the elevational treatment is intended to counter the institutional perception of similar past developments, and demonstrate the value currently placed on the more mature members of our society, through the provision of modern and iconic accommodation.

The resultant design form consequently hugs the contours of the existing slope, causing setbacks at the upper floor level to maintain the three story building height, with the lowest level being semi recessed into the hillside. The building shields its parking and servicing areas to the North of the site, effectively screening them from public view and enabling the communal green spaces to be arranged to the South side of the building, again, maximising natural light.