

Notes:
 Do not scale from this drawing.
 All contractors must visit the site and be responsible for taking and checking Dimensions.
 All construction information should be taken from figured dimensions only.
 Any discrepancies between drawings, specifications and site conditions must be brought to the attention of the supervising officer.
 This drawing & the works depicted are the copyright of John Thompson & Partners.

This drawing is for planning purposes only. It is not intended to be used for construction purposes, whilst all reasonable efforts are used to ensure drawings are accurate, John Thompson & Partners accept no responsibility or liability for any reliance placed on, or use made of, this plan by anyone for purposes other than those stated above.



- Materials Key
- Rockpanel cladding - Blue Grey (RAL 7031)
 - White painted metal screen / louvre
 - Wienerberger - Nottingham City Red brick
 - Wienerberger - K201 Staffordshire Smooth Blue brick
 - Decorative detailing, Wienerberger - K201 Staffordshire Smooth Blue brick
 - PPC aluminium copes
 - Balustrade panels - material to be agreed
 - Proprietary flashing's
 - Sarnafil single ply membrane
 - GRP Composite front doors - varied colours

P5	12.09.13	Non-material amendments	CD	DEC
P4	14.05.13	Post Planning Amendments	SG	AD
P3	10.05.13	Post Planning Amendments	SG	AD
P2	02.05.13	Post Planning Amendments	SG	AD
P1	28.03.13	Planning Application Issue	VH	AD

Rev	Date	Description	Drawn	Chkd
-----	------	-------------	-------	------

Drawing Status

Detailed Planning Application



JOHN THOMPSON & PARTNERS



Project
 Lenton Gardens
 Nottingham

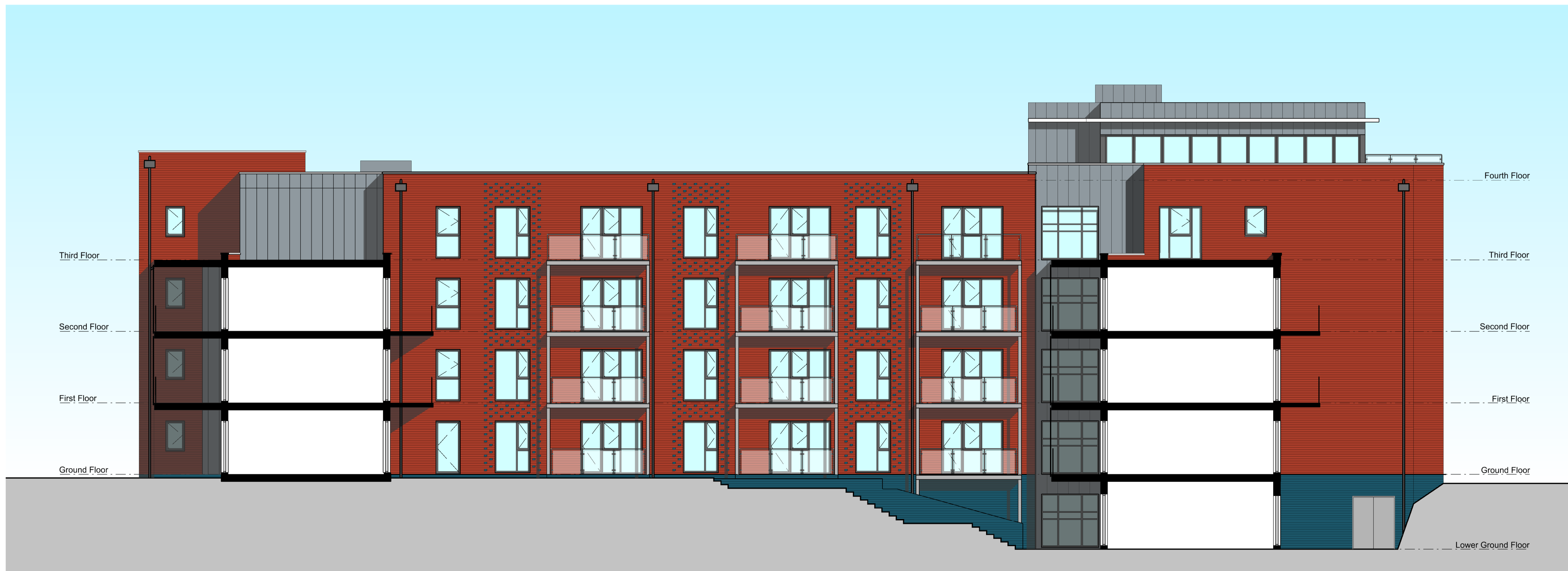
Drawing Title
 Independant Living Block
 Elevations, Sheet 2 of 3

Scale @ A1 1:100 Job Ref. 00616

Drawing No. 00616_FBA_E_02 Revision P5



North Elevation (facing Cinema)



West Section / Elevation through Courtyard