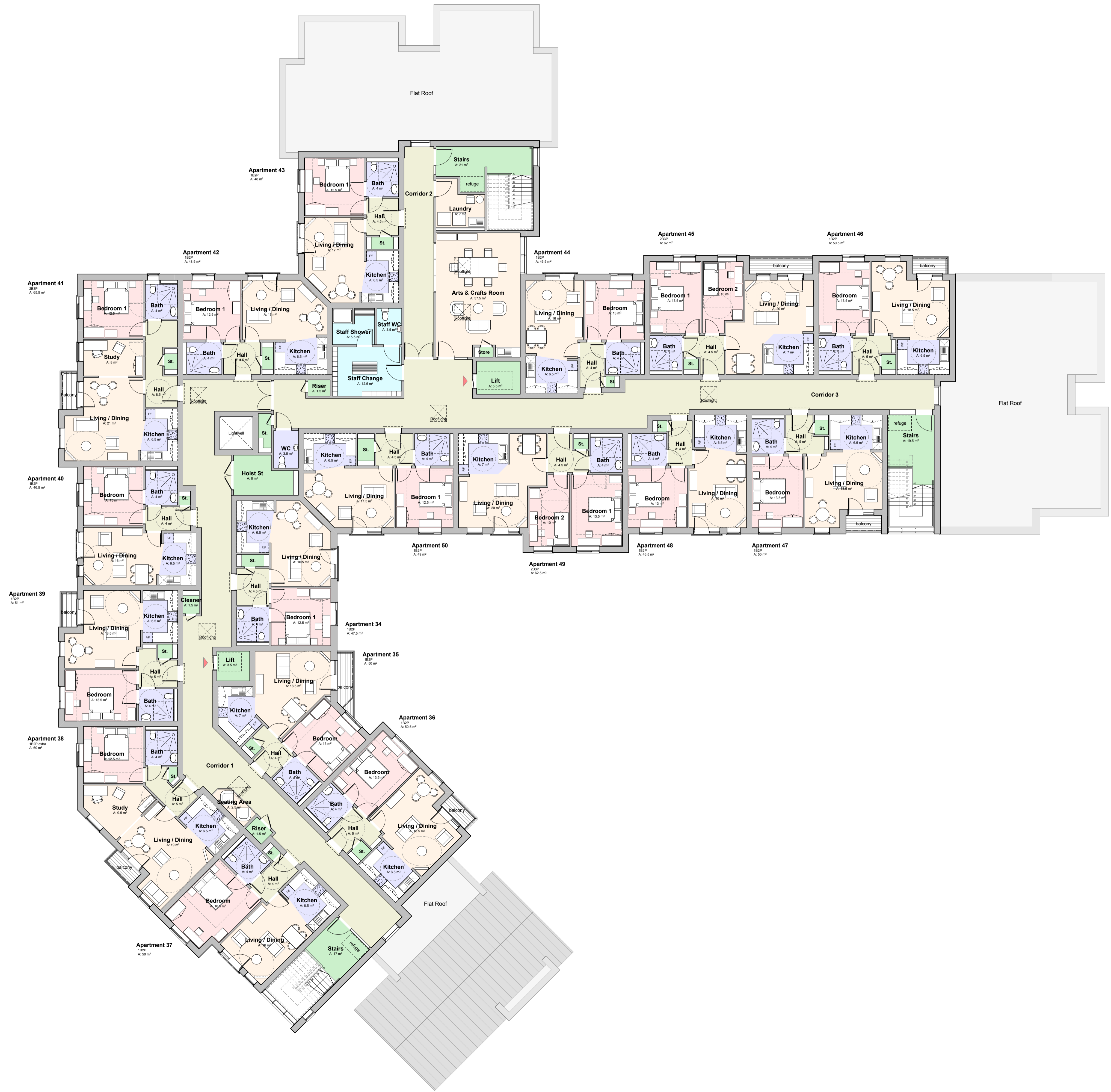


second floor plan - as proposed



Revision	Drawn Note
Date	
A	JKG Additional detail relating to fenestration, roof scope and areas
04.09.13	
B	CMW Further furniture / internal layout details added. Ino. Stair Core removed & layout configured to internal corner. Apartments re-numbered. Rooflights indicated.
23.09.13	
C	JKG Minor alterations made to communal area's, roof scape on first floor updated to reflect flat roof option, drawing status updated to 'Planning'
09.10.13	
D	JKG Drawing status updated to 'Planning - Approved'
10.03.14	



W195 Model - planning_amended.pln

brp architects
 1 Millers Yard
 Roman Way
 Market Harborough
 Leicestershire
 LE16 7PW
 t: 01858 464986
 brp-architects.com

Client: **Westleigh Developments Ltd**

Project Title: **Proposed Extra Care Development
 Winchester Road
 Blaby, Leicestershire**

Drawing Title: **Second Floor Plan - As Proposed**

Drawing Status: **Planning - Approved**

Scale: **1:125 @ A1**

Drawn By: CMW	Checked By (File copy only):	Date: 02/09/2013
Job No: W195	Drawing No: 006	Revision: D

brp (arch) ltd accept no responsibility for work not undertaken fully in accordance with the contents of this drawing and related specifications.
 © COPYRIGHT brp (arch) ltd
 This Drawing To Be Read In Conjunction With Other Relevant Consultants and Specialists Drawings And Specifications.

