

Landscaping Scheme

PLANTING SPECIFICATION:
HORTICULTURAL PRACTICE, RELEVANT BRITISH STANDARDS (British Standard 5837 2012 and BS 3398. AND ANY SPECIFICATION PROVIDED.

Tree Protection Fencing: Tree works undertaken will be in strict accordance with British Standard 5837 2012 and all tree protection to be carried out under BS 3398 Recommendations for Tree Work and current sound arboricultural practice. Prior to landscaping commencing the Tree Protection Zone must be fenced off. See Arboricultural report ACS Consulting (London) Sept 2013

Planting Specification:
 Subject to obtaining the necessary approvals, tree and shrub planting will be carried out during the first planting season after completion of the building works using container grown, root-balled and bare-root stock.

General planting operations

- All plants to comply with the relevant British Standards
- Finished levels of shrub borders to be 15mm below adjacent paved or grass surfaces (90mm below surfaces if laying mulch).
- Proposed feathered or standard trees to be true to the species, variety and size as specified on the planting plan.
- All plants to be handled according to the CPSE publication 'Plant Handling and Established Landscape Plants'.

Shrub Preparation and Planting

- Clear area of vegetation, rubbish, weed roots, stones over 40mm etc and cultivate to a depth of 300mm removing all undesirable material such as stones and clay balls greater than 75mm in any dimension, roots tufts of grass and foreign matter.

- Set out plants to layout and densities shown on plans. Proposed shrubs to be true to sps or variety. Container grown and at least 3L - 7.5L dependant on availability.
- Area to be mulched with 75mm depth green waste/ wood-chip/ mulch on top of membrane.

Turfing
 Use a good quality turf suitable for the ground conditions with a suitable fescue and rye grass mix with good wear, disease and drought tolerance. Delivery to be phased to ensure laying within 48hrs of lifting. Stacks not to exceed 1.4m high.

Preparation for turfing:
 Remove all weeds, rubbish and stones over 30mm in any dimension. Cultivate topsoil to a minimum depth of 100mm. Reduce top 30mm to a fine fillth and on clay or heavy loam soils work in 50% of coarse sharp sand to produce a 60mm layer. Dress areas to be turfed with a proprietary N7:P7:K7 fertiliser at a rate of 50g/m². Work into the top 30mm of fillth 7 days before turfing and water in well. Dependant on soil conditions Turfing adjacent to obstructions: Leave a neat 300mm radius of soil round all newly planted trees. Unless otherwise shown on the drawing, turf right up to existing established trees, walls, fences and similar obstructions, leaving no soil uncovered. Cut and roll lawn after approximately 6 weeks using a sharp cylinder mower and a roller weight 100 kg. Spread and brush in a top dressing of fine sieved topsoil and sand 50 : 50 to fill cracks and depressions.

Species	size (cm)	Spec.	No. of plants
Trees			
Prunus campanulata 'Jury'	10-12 cm girth	Std. CG	1
Prunus 'Snow Goose'	10-12cm girth	Std. CG	1
Prunus padus 'Alberti'	8-10 cm girth	Std. CG	1
Climbers/Wall shrub			
Schizophragma hydrangeoides var. hyd. 'Roseum'	40-60	3l	1
Hydrangea anomala subsp. petiolaris 'Silver Lining'	40-60	3l	1
Parthenocissus 'Henryana'	60-80	2l	1
Pycnantha rogersiana	80-100	2l	1
Chaenomeles x superba 'Crimson & Gold'	40-60	3l	1
Shrubs			
Cotoneaster salicifolius 'Rothchildianus'	H. Std. 10-15l		2
Symphoricarpus x doorenbosii 'Whitehedge'	40-60	3l	2
Aucupa japonica 'Crotinifolia'	30-40	3l	1
Euonymus alatus 'Compactus'	20-30	3l	2
Cistus salvifolius	20-30	3l	3
Hebe 'Sapphire'	20-30	2l	2
Hebe 'Midsummer Beauty'	30-40	2l	1
Cotoneaster conspicuus 'Decorus'	20-30	2l	2
Potentilla fructosa 'Manchu'	20-30	3l	2+2+2
Hypericum 'Hidcote'	30-40	3l	1
Ruscus aculeatus	30-40	3l	3
Groundcover - woody and herbaceous			
Rubus tricolor 'Betty Ashburner'	20-30	1l	20 + 37
Sarcococca hookerianus var. humilis	15-20	2l	4
Stephanandra incisa 'Crispa'	20-30	2l	2
Lamium maculatum 'Silver Beacon'	1l		12
Stachys byzantina 'Silver Carpet'	1l		6
Bergenia cordifolia 'Winterglow'	2l		3 + 2
Tiarella wherryi	0.5l		4
Fern			
Dryopteris filex-mas	2l		2
Hedging			
Rosa rugosa 'Fru Dagmar Hastrup' (single row 35cm spacing)	30-40	2l	40 + 22

Rubus tricolor 'Ashburner' x 20 (45cm spacing)

Old logs to be left in this area for stag beetles

Prunus campanulata 'Jury' x 1. 10-12cm girth standard.

Pycnantha rogersiana x1 (Plant 20cms out from wall filling to back to wall)

Hypericum Hidcote x 1

Paving extended

Bergenia cordifolia 'Winter Glow' x 2

Potentilla fructosa 'Manchu' x 2

Bergenia cordifolia 'Winter Glow' x 3

Potentilla fructosa 'Manchu' x 2

Prunus 'Snow Goose' x 1 Std. 10-12cm girth

Turf on the South and South West to be a standard landscapers turf containing a high percentage of perennial ryegrass

Re Size: Please see notes under 'Shrub preparation and planting'

Please Note: For hardlandscaping details refer to main plan.

Planting specifications by
Lucy Cotes B G Design Studio Ltd
 01825 733148

Please Note:
 All measurements must be checked on site before starting work or workshop drawings and not solely scaled from this drawing due to distortions in printing except for planning purposes

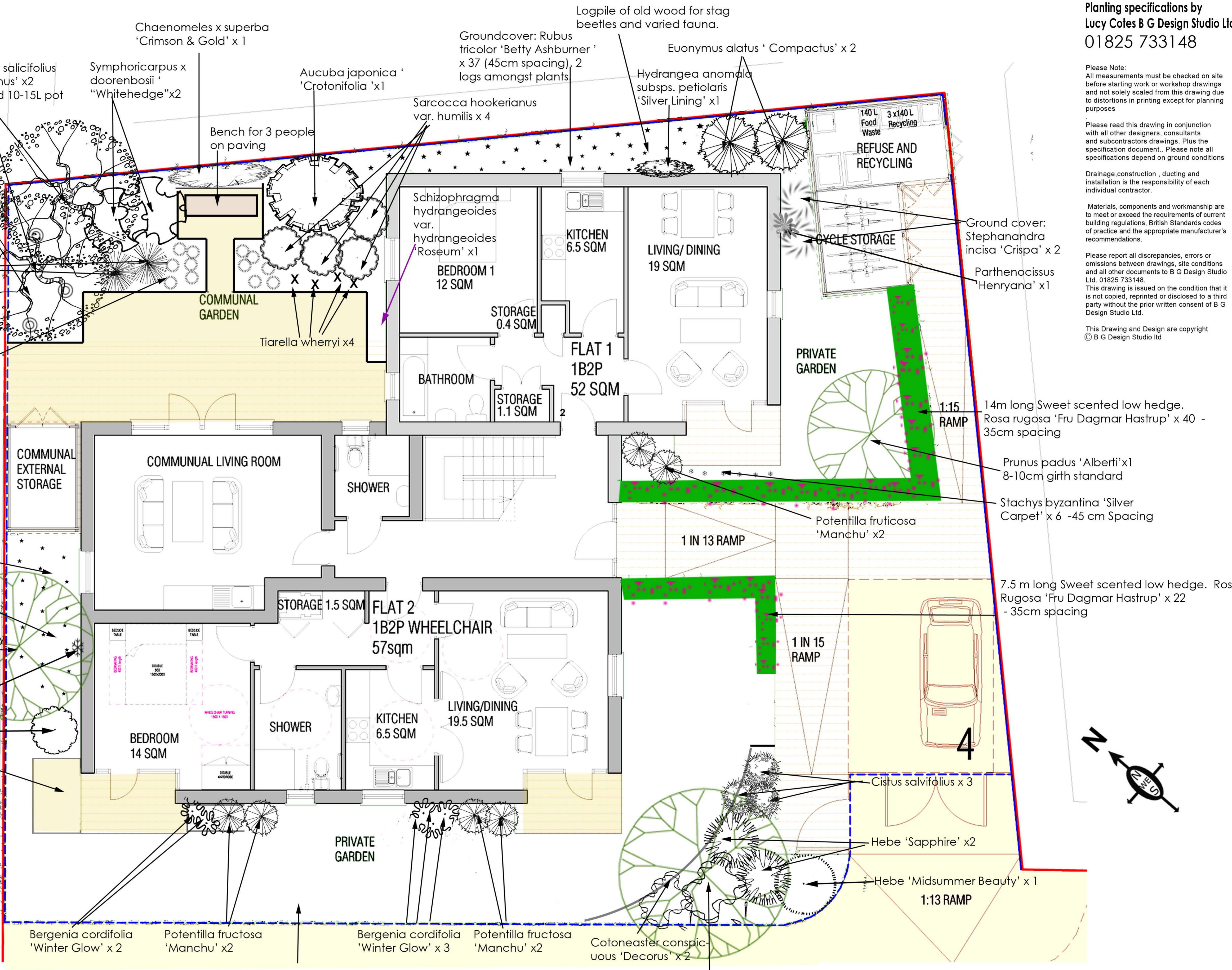
Please read this drawing in conjunction with all other designers, consultants and subcontractors drawings. Plus the specification document. Please note all specifications depend on ground conditions

Drainage construction, ducting and installation is the responsibility of each individual contractor.

Materials, components and workmanship are to meet or exceed the requirements of current building regulations, British Standards codes of practice and the appropriate manufacturer's recommendations.

Please report all discrepancies, errors or omissions between drawings, site conditions and all other documents to B G Design Studio Ltd. 01825 733148. This drawing is issued on the condition that it is not copied, reprinted or disclosed to a third party without the prior written consent of B G Design Studio Ltd.

This Drawing and Design are copyright © B G Design Studio Ltd



Project:
Lock Road Flats

Drawing Description:
 Landscaping Scheme

Date: 17th July 2014
Drawing Number:
 Landsc 1C

Revisions: C 14/8/14