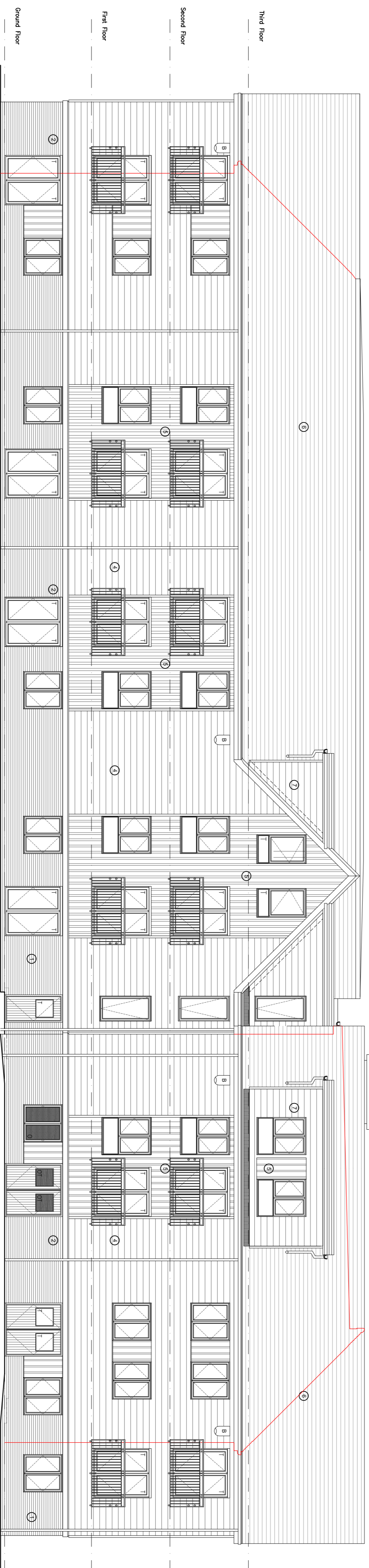


**NORTH-EAST FACING FRONT ELEVATION**



**SOUTH-EAST FACING SIDE ELEVATION**

**Materials Legend**

- ① Brk - Hanson Chelsea Smoked Red
- ② Stone string course 150mm colour Portland
- ③ Stone window heads colour Portland
- ④ Horizontal boarding, Hardie plank or similar with colour Monterey Taupe
- ⑤ Vertical boarding colour Monterey Taupe, refer to detail
- ⑥ Roof tile - SVK Montana cement fibre slate
- ⑦ Roof dormers - Timber with lead roof and cheeks

Note: Soffits and fascias - upvc white. Where boarding is vertical, the window framing pieces and cills are to be in white.

Rev.	Date	Revision History
D	17.3.16	Julie Balfour & 1500mm Double Doors
C	15.3.16	Julie Balfour & 1500mm Double Doors- Front Elevation
B	19.2.16	Revised to I44 requirements
A	6.1.16	Scale Bars

**COUNTRYSIDE**  
 Planning & Architecture  
 1500mm Double Doors  
 1500mm Double Doors- Front Elevation  
 19.2.16

**bhd architects**  
 Building Design  
 1500mm Double Doors  
 1500mm Double Doors- Front Elevation  
 19.2.16

Project:  
 Extra Care  
 Hordale Phase 2  
 Culliton  
 Nth

Designated by	Name	Date	Checked	Name	Date
DR	GR	2015	Approved		
Drawn by	GR	2015	Approved		

Scale: 1:100 @A1  
 Source: PLANNING

Drawing Title:  
 North East & South East Elevations

Drawing No:  
 A\_EL\_001

Rev:  
 D

