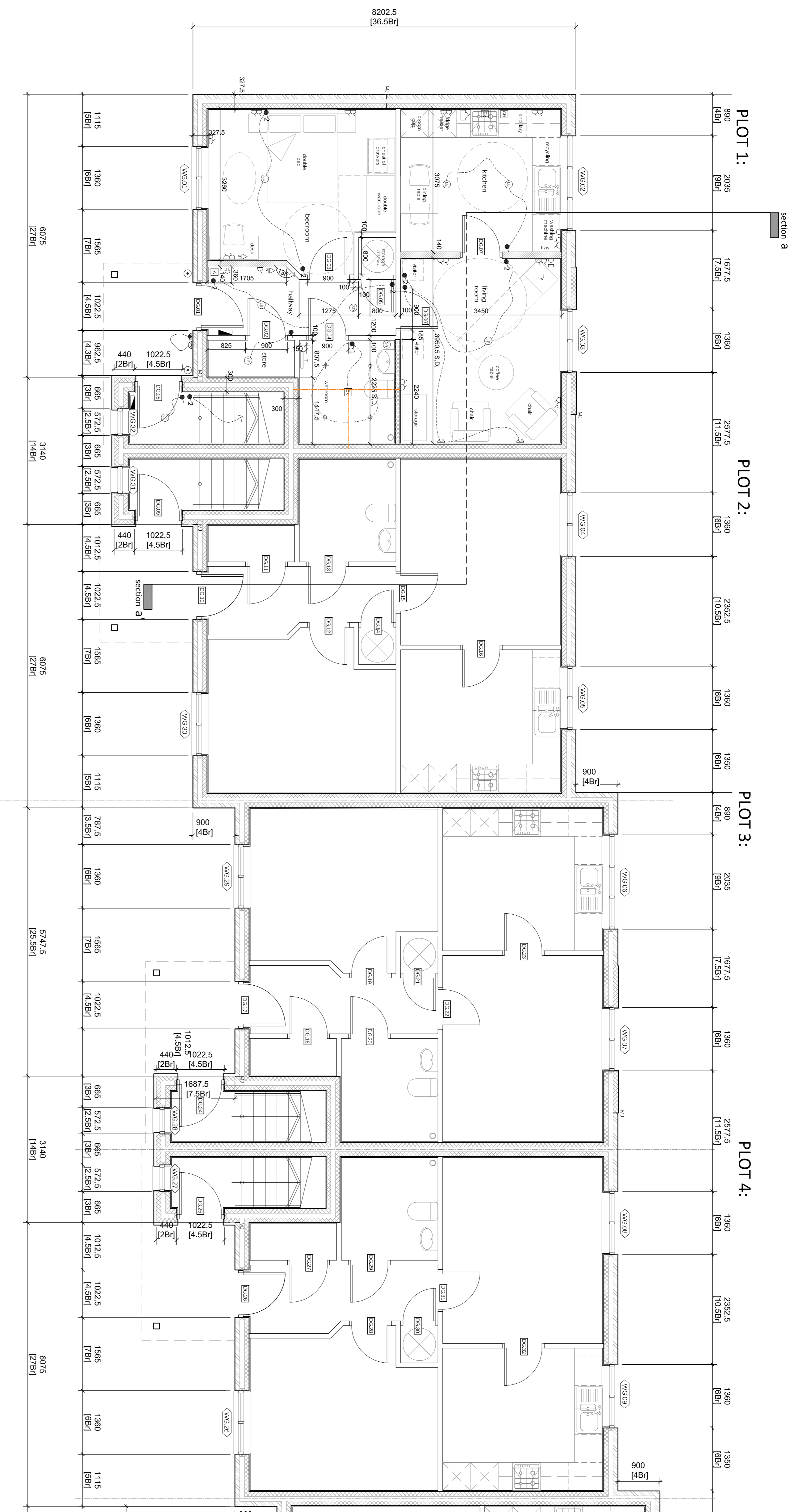


DO NOT scale from this drawing - All dimensions and setting out to be verified on site. If in doubt contact the originator for clarification

REVISION:

A 04.03.14 preliminary electrical layout plus door and window refs. added



**SYMBOLS LEGEND**

- One way light switch 1.2m above FFL
  - One Way pull-switch with isolator to extract outside room
  - Emergency pull-switch
  - 2 Light switch (2-way) 1.2m above FFL
  - Low-energy Luminaire to comply with AD L1
  - Low-energy wall mounted bulkhead fitting
  - Low-energy PIR photocell sensor
  - Low-energy recessed Light Fitting
  - 13 amp twin socket outlet, 300mm above kitchen worktop, 450mm above FFL elsewhere
  - 13 amp single socket outlet, 300mm above kitchen worktop, 450mm above FFL elsewhere
  - cooker point, 300mm above worktop
- 
- Towel Rail
  - ⊠ Intruder alarm
  - ⊠ telephone/datapoint
  - ⊠ T.V aerial
  - ⊠ Cooker Hood
  - ⊠ Extract fan with switched fused spur
  - ⊠ Consumer Unit
  - ⊠ Door bell
  - ⊠ Door bell push, 1.2m above FFL
  - ⊠ Smoke detector at high level
  - ⊠ Shaver Point



DRAWING:  
GA floor plans: plots 1-4

PROJECT:  
new apartments and associated  
refurbishment works

LOCATION:  
High Mount, Donnington, Telford BR-010a

SCALE:  
1:50 @ A1

DRAWN:  
dec 2013