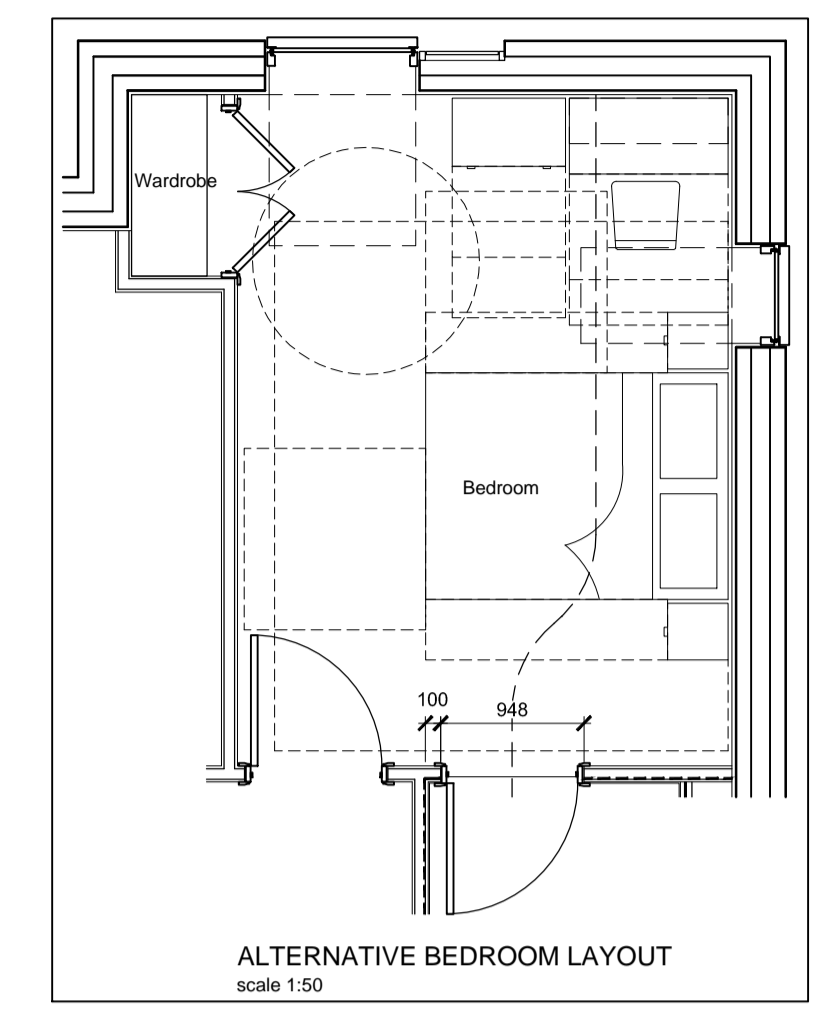


notes

- The contractor is responsible for checking dimensions, tolerances and references. Any discrepancy to be verified with the Architect before proceeding with the works.
- Where an item is covered by drawings to different scales the larger scale drawing is to be worked to.
- Do not scale drawing. Figured dimensions to be worked to in all cases.

CDM Regulations 2007
 ALL current drawings and specifications for the project must be read in conjunction with the Designer's Hazard and Environmental Assessment Record.

DRAWING REFERENCES:
 AA3615C/4100 - 4109 - FLAT TYPE PLANS
 AA3615C/4200 - 4205 - GROUND FLOOR PLANS
 AA3615C/4206 - 4211 - FIRST FLOOR PLANS
 AA3615C/4212 - 4217 - SECOND FLOOR PLANS



FLAT TYPE 2
1 BED 2 PERSON UNIT
 Gross Internal Area = 54.25m²
 (not including Balcony)

39 No. as drawn
 Plot No.'s: 113, 118, 122, 127, 203, 204, 214, 215, 224, 225, 404, 405, 406, 407, 414, 415, 416, 417, 424, 425, 426, 427, 504, 505, 506, 515, 516, 517, 525, 526, 527, 601, 602, 612, 613, 614, 622, 623 & 624

21 No. handed
 Plot No.'s: 114, 115, 116, 117, 119, 123, 124, 125, 126, 128, 501, 502, 503, 511, 512, 513, 514, 521, 522, 523 & 524

STORES -
 HQI GENERAL STORAGE REQUIREMENT @ 0.75m²/Person = 1.5m² SHELF AREA NORMAL STORAGE + 0.5m² TALL STORAGE

SHELF STORAGE - Store 1
 300mm deep shelves @ +600mm, +900mm, +1200mm, +1500mm ht. Area = 0.47m² each

TOTAL AREA = 1.88m² SHELF STORAGE

TALL STORAGE, min 1500mm ht - Store 1
 (0.30 x 1.57) = 0.55m²

TOTAL AREA = 0.65m² TALL STORAGE

Note to units with RWP in store 1, 300mm wide shelving achieves 1.52m² & tall storage remains unaltered

KITCHEN - HQI min required for 2 person flat = 1.5m²

Storage based on suggested layout to include the following units. Symphony used for guidance and basis of storage volumes, figures to be checked once manufacturer known.

1. 300mm Pull-out Larder Unit	= 0.30m ²
2. Space for Front Free Combi Fridge Freezer	= 0.20m ²
3. Space for Washer / Drier	= 0.13m ²
4. Inset Shallow One & Half Bowl Sink + Drainer on worktop	= 0.20m ²
5. # 1no. 600mm Base Unit	= 0.17m ²
6. # 1no. 400mm Base Unit	= 0.34m ²
7. # 1no. 800mm Corner Base Unit	= 0.20m ²
8. 600mm Electric Induction Hob unit on worktop	= 0.17m ²
9. # 600mm Pan Drawer Base Unit	= 0.34m ²
10. 500mm Drawer Unit	= 0.17m ²
11. 1000mm Corner Base Unit	= 0.34m ²
12. Towel Rail / Tray Space	= 0.30m ²
13. Single Oven with Side Opening Door	= 0.05m ²
14. Tall Single Oven Housing Unit	= 0.09m ²
15. OMITTED	= 0.00m ²
16. 300mm Wall Unit	= 0.05m ²
17. 500mm Wall Unit	= 0.09m ²
18. Integrated Recirculating Hood, volume NOT Counted (too high)	= 0.00m ²
19. 500mm Wall Unit	= 0.09m ²
20. 600mm Corner Wall Unit	= 0.11m ²
21. 400mm Wall Unit	= 0.07m ²
22. 500mm Lockable Wall Unit	= 0.09m ²

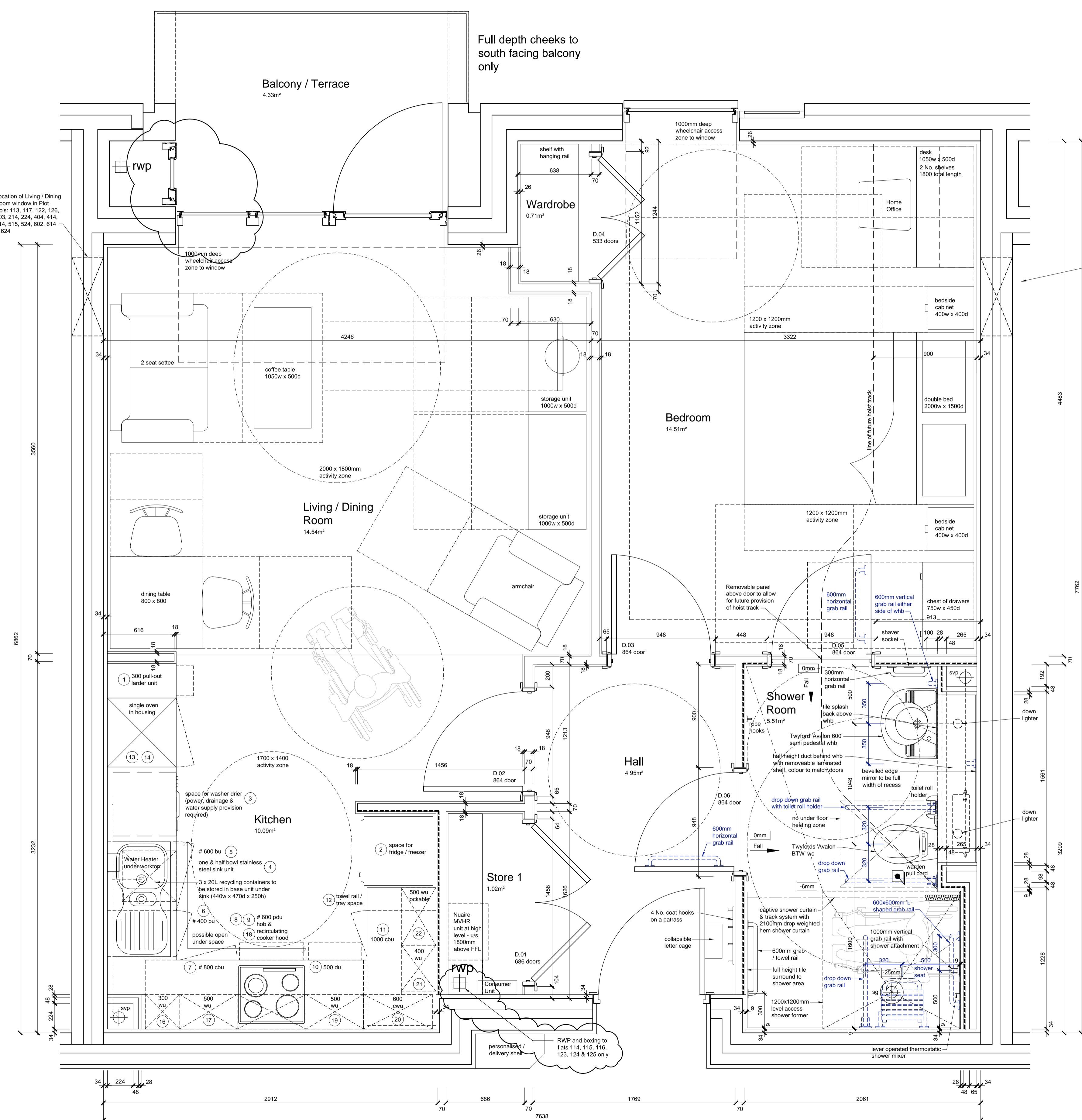
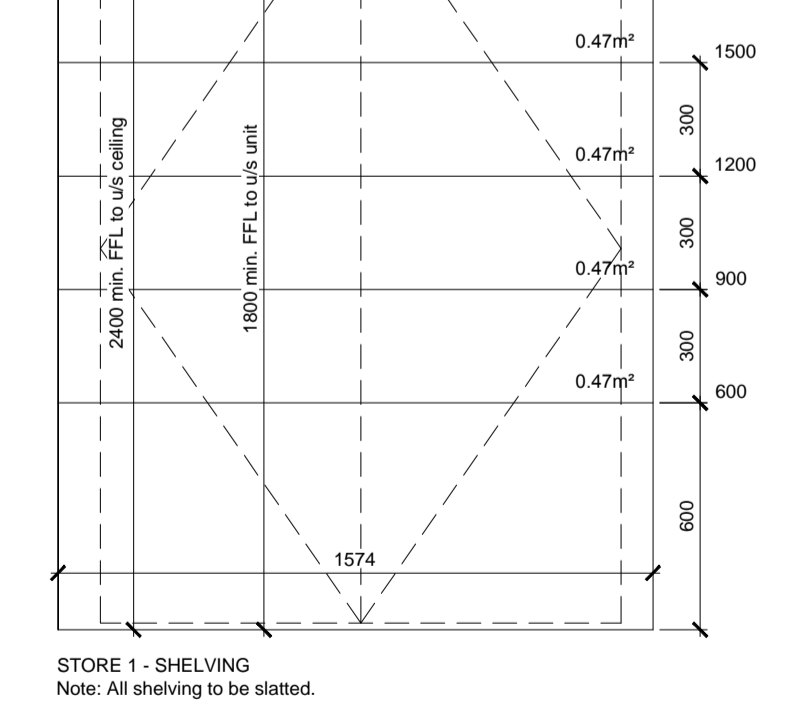
The volume figures given above are typical (assuming 724mm high wall units) but must be checked against the chosen manufacturers figures (once known).

TOTAL STORAGE = 2.41m²

Note: If adjustable wheelchair specific units are used the storage space may not meet requirements. Mobile under counter units would be required.

Option for location of 3rd appliance (dishwasher), the kitchen will still meet the SDS required volumes however it would compromise the height adjustability of the worktops.

WHGD compliant layout indicated to show compliance for future adaption, standard base units to be installed initially are marked #.



date	rev	revision/author/checker
14.04.14	B	RWP added & door swing omitted (DCV) (AR)
20.12.13	A	Nuair unit text amended. ISSUED FOR CONSTRUCTION (DCV) (AR)
26.11.13	P3	Water heater indicated under sink in Kitchen. Shower Room layout amended following Client Review on 18/10/2013. Kitchen layout amended to show walls between Kitchen & Living / Dining. Alternative Bedroom layout drawn to incorporate side window. Note added re: height of MEDVC unit & shelving in Store 1. Areas amended to suit changes. Lockable cupboard indicated in Kitchen. (DCV) (AR)
25.09.13	P2	Dimensions, Internal Door Refs & Shower fall added. Number of & Plot numbers added. Wardrobe relocated in Bedroom & furniture rearranged. Kitchen rearranged & Store 1 reduced in size. Shower Room reduced in width. Areas amended to suit changes. Balcony moved by 112mm. Eat Store, Wardrobe, Bedroom, Living Dining & GIA amended to suit. Numbers added to kitchen units. (DCV) (AR)
29.07.13	P1	PRELIMINARY ISSUE (DCV) (AR)

purpose of issue
CONSTRUCTION

project
FARROW COURT ASHFORD

drawing
FLAT TYPE 2

drawing no AA3615C/4101		rev B
drawn DCV	checked AR	
scale @ A1 1:20	date JULY 2013	

AA3615C/4101 FLAT TYPE 2