

FLAT TYPE D
1 : 50

FLAT TYPE D (GIA) SCHEDULE			
Name	Level	Comments	Area
FLAT 7	1 Ground Floor		53.28 m ²
FLAT 23	2 First Floor		52.85 m ²
FLAT 46	3 Second Floor		53.20 m ²

FLAT TYPE DRAWING TO BE READ IN CONJUNCTION WITH GENERAL ARRANGEMENT DRAWING NUMBER'S

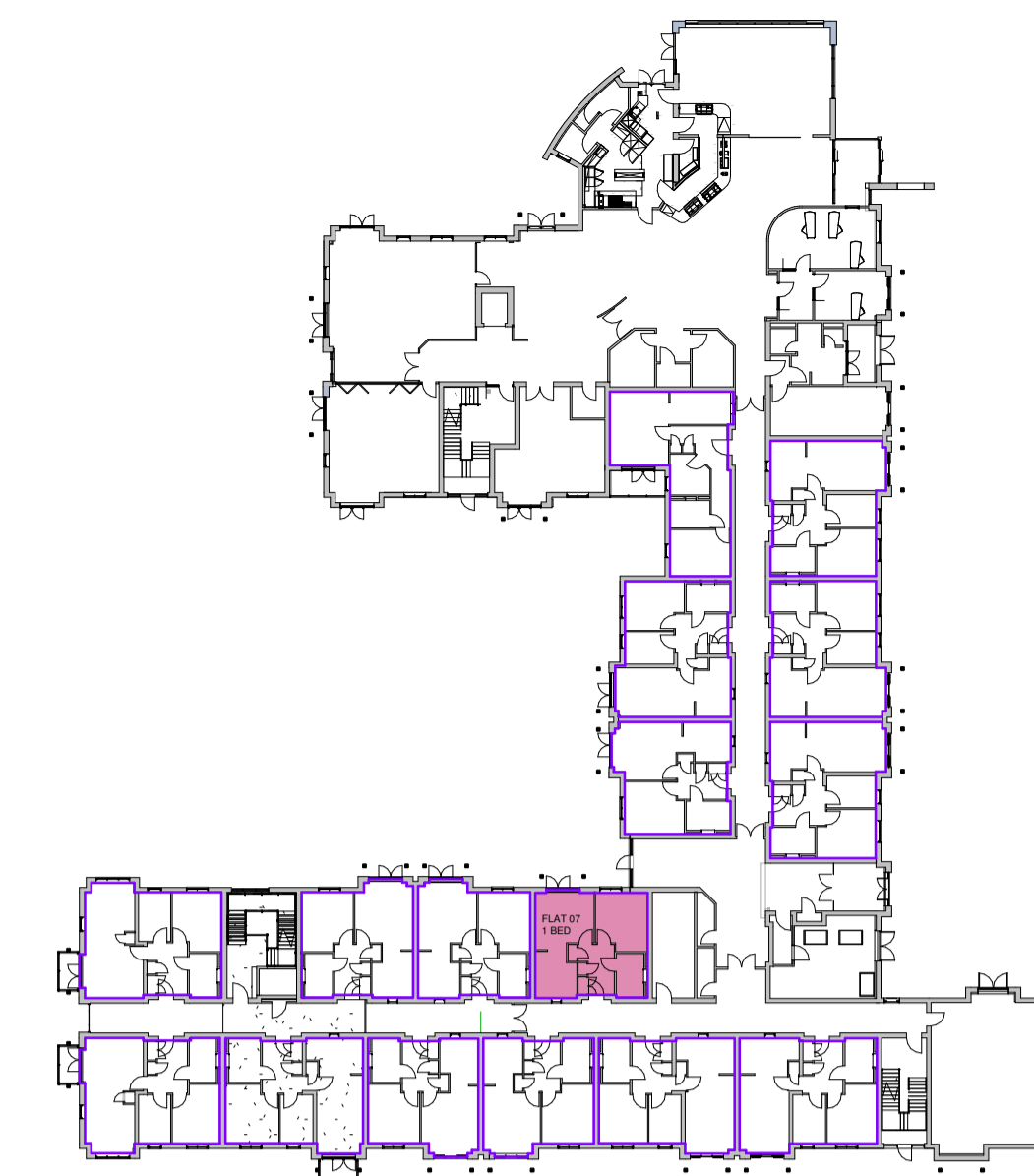
2259-120,
2259-121,
2259-122,
2259-123,
2259-124,
2259-125,
2259-126.

FOR PATIO DOOR, DOOR SWINGS AND BALCONY LOCATIONS REFER TO DRAWING NUMBERS LISTED ABOVE.

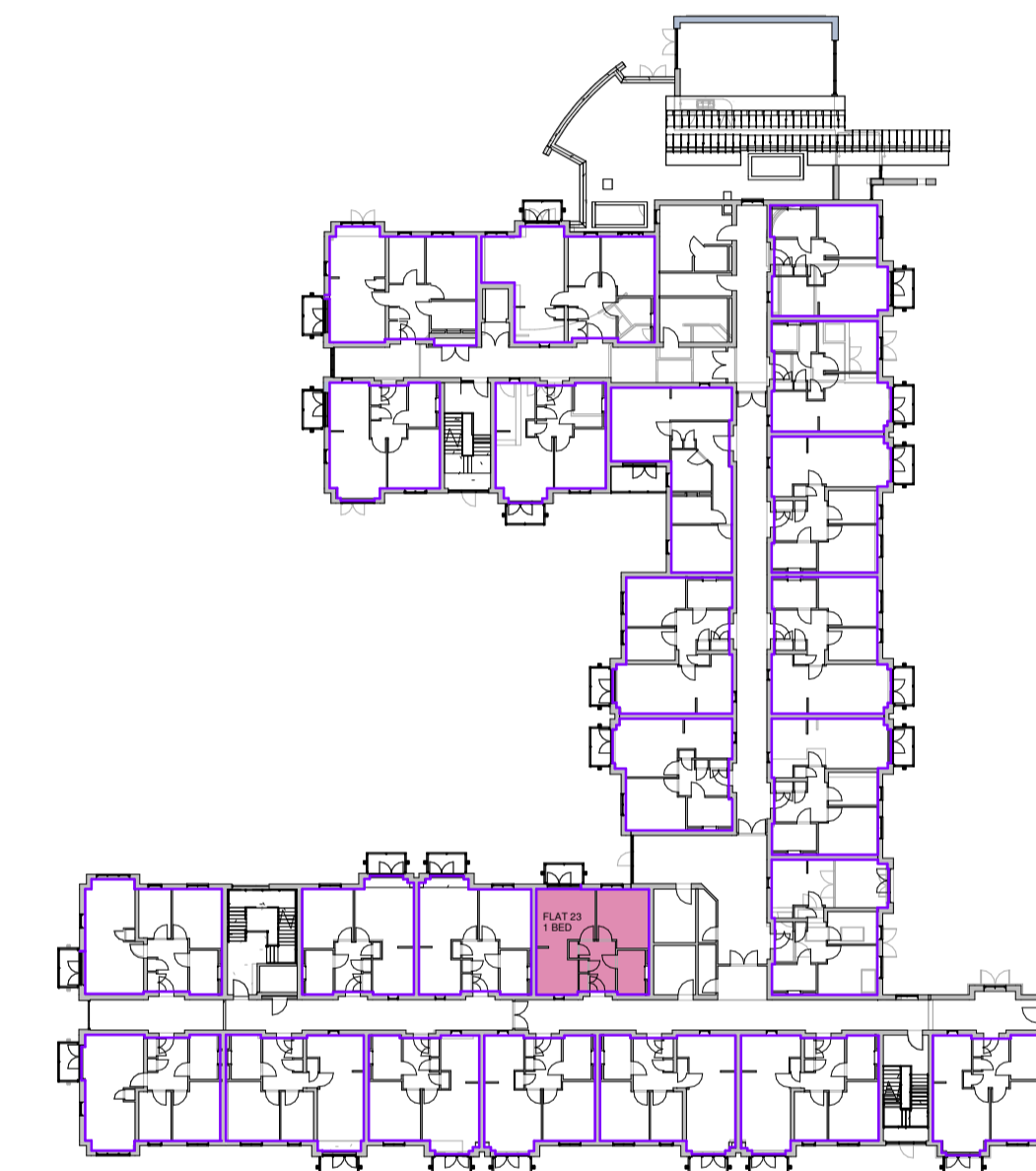
FOR DOOR, WINDOW AND SCREEN REFERENCES REFER TO DRAWING NUMBERS LISTED ABOVE.

REFER TO SETTING OUT DRAWINGS FOR ROOM SETTING OUT. DRAWING NUMBERS T.B.C.

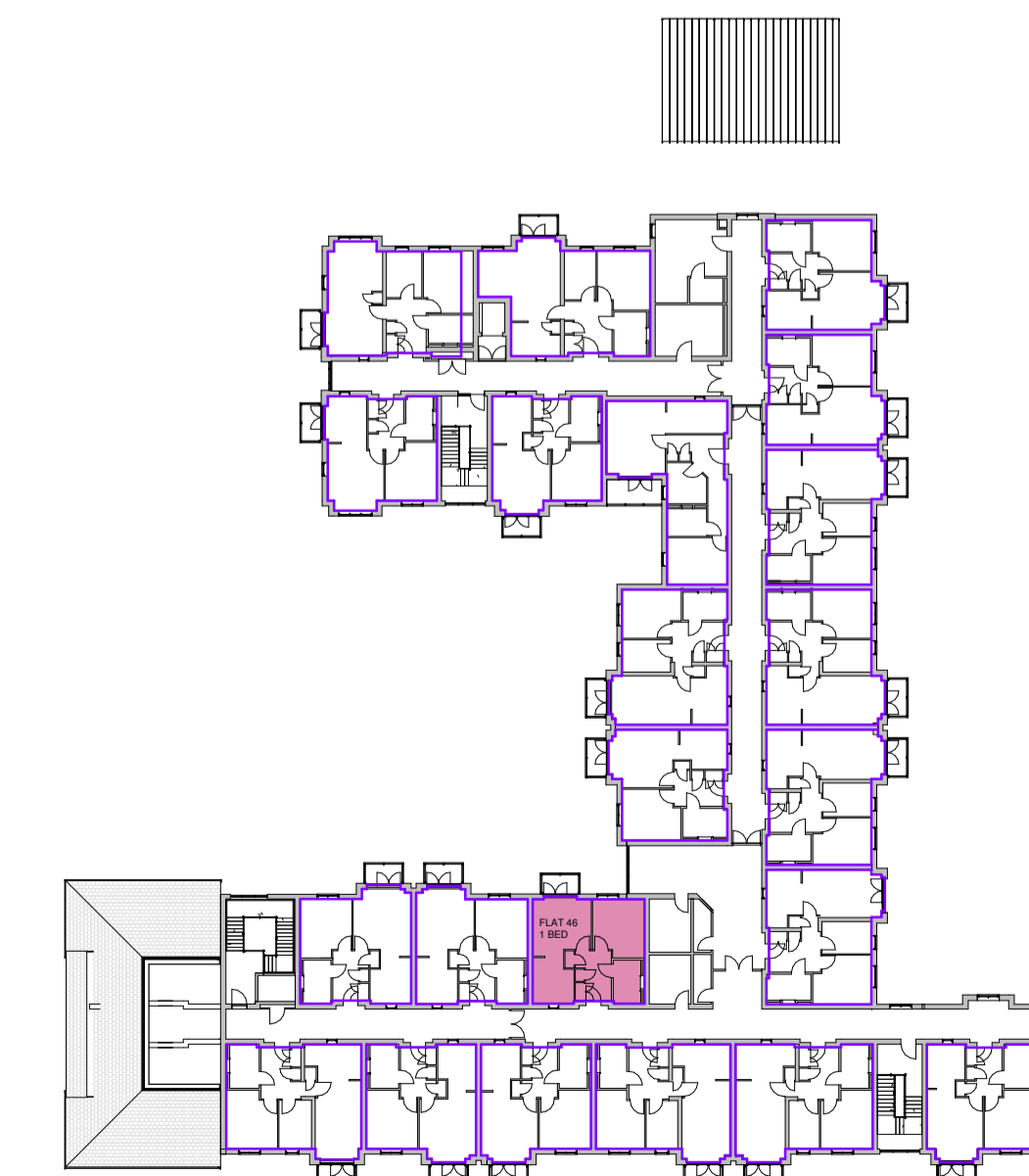
FOR SHOWER ROOM SETTING OUT, REFER TO SHOWER ROOM LAYOUT DRAWING NUMBER 2259-485



Ground Floor - D
1 : 500



First Floor - D
1 : 500



Second Floor - D
1 : 500

NOTES:

The copyright © of this drawing is vested in the Architect and must not be copied or reproduced without consent.
All Contractors must visit the site and be responsible for taking and checking dimensions relative to their work. Sutton and Wilkinson Chartered Architects to be advised of any variation between drawings and site conditions.
All window and door dimensions given relate to structural brickwork dimensions. Contractor to site measure openings and allow for necessary tolerances prior to ordering and manufacture. Contractor to check door swings against plan prior to ordering.

DO NOT SCALE OFF THIS DRAWING... IF IN DOUBT ASK

PRELIMINARY / TENDER ISSUE

REVISION	DESCRIPTION	DATE
A	LTH requirements indicated, general update.	31-10-14



PROJECT:
Redevelopment of Homestead & May Place
Brampton Road
Newcastle Under Lyme
Staffordshire

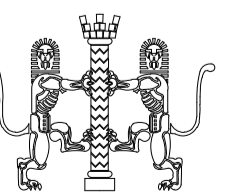
CLIENT:
Wrekin Housing Trust

TITLE:
FLAT TYPE D (1Bed)

SUTTON AND WILKINSON
CHARTERED ARCHITECTS

Victoria House, 13 New Penkridge Road,
Cannock, Staffs, WS11 1HW

Telephone: 01543 466441
Facsimile: 01543 462469
e-mail: office@suttonwilkinson.co.uk



SCALE	DRAWN	DATE	SIZE
As indicated	TAR/GB	Aug '14	A1
DRAWING NUMBER			REVISION
2259	403		A